



GLOBAL AVIATION MONITOR

April 2026

Statistical Report of Global, European and German Air Transport



Contents April 2026

Number of Monthly Departures _____	04
At the Largest Airports in the World _____	04
At the Largest Airports in Europe _____	04
At the Largest Airports in Germany _____	05
By the Largest Airlines in the World _____	05
By the Largest Airlines in Europe from European Airports _____	06
By the Largest Airlines in Germany from German Airports _____	06
Development of Air Transport Supply _____	07
Development of the Global Air Transport Supply _____	07
Changes in the Global Air Transport Supply _____	07
Development of the German Air Transport Supply _____	07
Changes in the German Air Transport Supply _____	07
Imprint _____	08

Note: Due to the Iran crisis, actual traffic in April 2026 is expected to differ from the planned figures, particularly in the Middle East region.



The DLR Global Aviation Monitor

The Global Aviation Monitor is a statistical report series from the DLR Institute of Air Transport of the German Aerospace Center, which serves as a supplement to various statistics, such as those from the Federal Statistical Office or the German Airports Association (ADV).

It provides monthly reports on the supply of flights in Germany, Europe, and worldwide. The development of flights over the last fifteen months is presented in the form of a time series. Additionally, there is a monthly ranking of the largest airports and airlines in Germany, Europe, and worldwide, which are compared to the values of the previous year. The data is released during each month and represents the planned data for the current month.

This report fills a gap that is of interest to both airports and airlines in assessing their position on a global scale. It is of interest to policy-makers, administrators, industry stakeholders, and tourism offices to gauge the performance of their region. In the event of significant changes, it is worthwhile to examine closely what has caused them. Due to its monthly updates, the report can serve as a leading indicator for trends and developments.

The Institute of Air Transport provides further advanced forecasting capabilities. Combining established statistical techniques with innovative modelling approaches and a broad dataset, it delivers short-, medium-, and long-term forecasts on passenger and cargo traffic, airport capacity, fleet development, and route networks. These insights support strategic decision-making for stakeholders across the sector, reinforcing the institute's role in shaping future air transport planning at regional and global levels.



The report is being developed at the Air Transport Development department of the DLR Institute of Air Transport.

Global air traffic and emissions are projected to rise in the coming decades, driving the need for sustainable technological advancements. The department researches forecasting methods to anticipate demand and supply across different regions and aircraft types. These forecasts support strategic planning for infrastructure, connectivity, and environmental measures. By combining ecological, economic, and social factors, the department assesses new technologies and develops scenarios and roadmaps to guide the aviation sector towards climate-compatible growth.



Number of Monthly Departures in April 2026

Ranking by Airports Globally, for Europe & Germany

Global Airport Rankings: Majority Showing Growths

At 16 of the world's 25 largest airports, the number of departures increased in April 2026 compared with 2025. The four largest airports are located in North America, with Chicago ranking first at around 40,000 departures and continuing to grow. European airports Istanbul and London Heathrow rank 7th and 12th respectively. Asian airports occupy 5th, 8th, 9th and 11th places, namely Guangzhou, Shanghai Pudong, Tokyo Haneda and Delhi. Frankfurt ranks 17th worldwide. Strong growth in Chicago is driven by increased capacity at American Airlines and United Airlines.

This figure shows the twenty-five largest **airports worldwide**, measured in passenger flights.

Europe's Leading Airports Above 17,000 Departures

The largest European airports by number of passenger flights in April 2026 are Istanbul, London Heathrow, Amsterdam, Paris, Frankfurt and Madrid, each recording more than 17,000 scheduled departures.

This table shows the twenty-five largest **European airports**, measured in passenger flights.

Tab. 1: Number of monthly departures at the largest airports in the world

Rank	Airport	04/2026	Growth rate
1	Chicago O'Hare International	39,980	20.9
2	Atlanta Hartsfield-Jackson Intl	33,463	3.2
3	Dallas/Fort Worth Intl	29,283	-0.6
4	Denver Intl	27,142	0.1
5	Guangzhou	22,325	3.8
6	Charlotte	21,723	-2.7
7	Istanbul	21,691	4.5
8	Shanghai Pudong International	21,545	2.0
9	Tokyo Haneda	21,417	8.3
10	Los Angeles International	20,692	-2.5
11	Delhi	20,320	4.8
12	London Heathrow	19,651	-2.7
13	Amsterdam	19,321	-1.4
14	Phoenix Sky Harbor Intl	19,184	-2.8
15	Paris Charles de Gaulle	18,476	1.8
16	Beijing Capital	18,163	0.8
17	Frankfurt	17,856	-2.0
18	Houston George Bush Intercontinental	17,771	2.7
19	New York J F Kennedy International	17,717	-1.1
20	Orlando International	17,575	4.3
21	Shenzhen	17,475	2.9
22	Madrid Barajas	17,189	6.7
23	Kuala Lumpur International	16,990	6.7
24	Las Vegas McCarran International	16,920	-6.2
25	Chengdu Tianfu	16,830	5.7

Source: DLR

Tab. 2: Number of monthly departures at the largest airports in Europe

Rank	Airport	04/2026	Growth rate
1	Istanbul	21,691	4.5
2	London Heathrow	19,651	-2.7
3	Amsterdam	19,321	-1.4
4	Paris Charles de Gaulle	18,476	1.8
5	Frankfurt	17,856	-2.0
6	Madrid Barajas	17,189	6.7
7	Barcelona	15,214	4.5
8	Rome Fiumicino	14,599	0.8
9	Munich	12,988	-4.9
10	Copenhagen	11,124	8.5
11	London Gatwick	10,810	0.0
12	Zurich	10,780	4.4
13	Athens Intl Eleftherios Venizelos	10,498	-0.1
14	Dublin	10,448	0.9
15	Istanbul Sabiha Gokcen	10,335	-2.3
16	Palma Mallorca	10,182	1.2
17	Paris Orly	9,423	-2.5
18	Lisbon	9,376	-1.2
19	Vienna	9,310	-8.1
20	Moscow Sheremetyevo International	8,984	-0.7
21	Oslo	8,858	2.7
22	Stockholm Arlanda	8,154	3.3
23	Malaga	8,125	7.3
24	Manchester International	8,099	1.6
25	London Stansted	7,949	5.0

Source: DLR

Number of Monthly Departures in April 2026

Tab. 3: Number of monthly departures at the largest airports in Germany

Rank	Airport	04/2026	Growth rate
1	Frankfurt	17,856	-2.0
2	Munich	12,988	-4.9
3	Berlin	7,541	0.5
4	Dusseldorf	6,316	-0.8
5	Hamburg	4,635	0.3
6	Stuttgart	2,891	-5.2
7	Cologne/Bonn	2,705	-3.3
8	Hanover	1,808	-0.3
9	Nuremberg	1,388	0.9
10	Memmingen	977	4.8
11	Dortmund	804	19.6
12	Bremen	697	-3.6
13	Weeze	673	16.8
14	Karlsruhe/Baden Baden	640	7.2
15	Leipzig/Halle	553	-4.0
16	Hahn	517	-8.0
17	Munster	388	-5.6
18	Dresden	311	-19.0
19	Paderborn	228	1.8
20	Saarbrücken	129	33.0
21	Friedrichshafen	109	230.3
22	Westerland	83	-19.4
23	Erfurt	76	-13.6
24	Luebeck	35	-7.9
25	Augsburg	34	----

Source: DLR

Mixed Performance Across German Airports

Frankfurt remains Germany's largest airport, with approximately 17,900 departures. However, several major airports, including Frankfurt, Munich and Dusseldorf, report lower figures than the previous year. In contrast, Berlin and Hamburg recorded increases. This upward trend is also evident at airports dominated by low-cost carriers, such as Dortmund and Weeze. Ryanair is expanding its services in Weeze through frequency increases, for example to Málaga and Palma de Mallorca. Friedrichshafen has introduced new domestic routes operated by Flex Flight and marketed by Air UniQon to Dusseldorf, Berlin and Hamburg. Saarbrücken has also gained new Ryanair services, including routes to Lamezia.

Here, the twenty-five largest **German airports** are listed, measured in passenger flights.

Tab. 4: Number of monthly departures by the largest airlines in the world

Rank	Airline	04/2026	Growth rate
1	American Airlines	195,314	3.3
2	Delta Air Lines	154,524	3.6
3	United Airlines	150,869	7.6
4	Southwest Airlines	120,509	0.2
5	Ryanair	105,814	4.9
6	China Eastern Airlines	70,372	-3.1
7	China Southern Airlines	68,692	3.2
8	IndiGo Air	66,116	-2.1
9	Air China	52,801	3.5
10	easyJet	50,398	-1.3
11	LATAM Airlines	47,761	3.9
12	Alaska Airlines	38,970	6.6
13	Turkish Airlines	35,655	4.5
14	All Nippon Airways	33,842	15.6
15	Lufthansa German Airlines	33,406	-2.7
16	Air Canada	30,452	-1.1
17	JetBlue Airways Corporation	27,656	3.1
18	Japan Airlines International	25,387	-1.0
19	British Airways	25,300	-2.0
20	Qantas Airways	23,633	4.8
21	SAS Scandinavian Airlines	23,288	7.4
22	Azul	23,115	-10.6
23	Aeroflot Russian Airlines	23,008	-0.4
24	Hainan Airlines	22,868	-2.4
25	Air France	22,651	-4.9

Source: DLR

Ranking by Airlines Globally, for Europe & Germany

Global Airlines: Growth Despite Regional Declines

Most major airlines worldwide increased their number of scheduled passenger departures in April 2026. American Airlines leads with approximately 195,300 departures. Lufthansa ranks 15th with around 33,400 departures, showing a downward trend. Airlines based in the Middle East report significant declines due to the war in Iran. When comparing year-on-year figures, special factors such as holiday periods and public holidays must be considered, as these can influence monthly flight volumes.

This figure shows the **world's** twenty-five **largest airlines**, measured in passenger flights.

Number of Monthly Departures in April 2026

Ranking by Airlines Globally, for Europe & Germany

Ryanair Dominates European Market

Ryanair offers the highest number of departures in Europe in April 2026, with nearly 103,200 departures, representing growth of 5.2% compared with the previous year. This is more than double the volume of easyJet, which ranks second with around 48,600 departures.

The twenty-five **airlines in Europe** with the most passenger flights from European airports are listed here.

German Airline Market: Lufthansa Leads Despite Decline

Lufthansa remains the largest airline in Germany, with approximately 20,300 departures in April, followed by Eurowings with around 7,400 and Ryanair with around 4,400 departures. All three show declining trends. The reduction at Lufthansa can partly be explained by a shift of operations to its new subsidiary, Lufthansa City Airlines. While Lufthansa is reducing its own flight programme, including fewer domestic feeder services such as Berlin–Munich, capacity at subsidiaries is increasing significantly. Condor is expanding operations in Frankfurt, Munich, Hamburg and Berlin, and has introduced new services in Stuttgart.

This table ranks the twenty-five **airlines** that offer the most passenger flights in **Germany**.

Tab. 5: Number of monthly departures by the largest airlines in Europe from European airports

Rank	Airline	04/2026	Growth rate
1	Ryanair	103,161	5.2
2	easyJet	48,603	-1.9
3	Lufthansa German Airlines	31,194	-2.3
4	Turkish Airlines	29,854	5.0
5	SAS Scandinavian Airlines	22,940	7.7
6	British Airways	22,137	-1.7
7	KLM-Royal Dutch Airlines	20,835	1.6
8	Air France	19,318	-5.8
9	Vueling Airlines	18,493	-2.0
10	Iberia	17,545	1.8
11	Aeroflot Russian Airlines	17,268	-1.6
12	Pegasus Airlines	16,055	-6.7
13	Wizz Air	15,804	41.7
14	Wizz Air Malta	14,506	25.9
15	Eurowings	13,624	-4.4
16	Swiss	11,799	-2.0
17	Ajet	11,621	11.8
18	Wideroe's Flyveselskap	10,045	-1.1
19	Austrian Airlines AG	9,909	-4.5
20	Finnair	9,740	3.3
21	Jet2.com	9,591	7.8
22	ITA Airways	9,171	-9.5
23	Aer Lingus	9,074	3.9
24	Transavia.com France	8,996	19.1
25	LOT - Polish Airlines	8,963	-0.5

Source: DLR

Tab. 6: Number of monthly departures by the largest airlines in Germany from German airports

Rank	Airline	04/2026	Growth rate
1	Lufthansa German Airlines	20,296	-2.5
2	Eurowings	7,404	-3.9
3	Ryanair	4,426	-1.5
4	Condor Flugdienst	2,232	16.4
5	SunExpress	2,194	-4.8
6	easyJet	1,600	-7.5
7	Air Dolomiti	1,504	-34.7
8	KLM-Royal Dutch Airlines	1,300	-4.5
9	Lufthansa City Airlines	1,285	59.2
10	Pegasus Airlines	1,259	-7.4
11	Wizz Air	1,247	54.9
12	Austrian Airlines AG	1,202	-4.7
13	Turkish Airlines	1,045	-1.1
14	Swiss	1,042	-19.8
15	Wizz Air Malta	1,038	45.2
16	TUIfly	942	4.0
17	Air France	881	-4.3
18	Eurowings Discover	864	-3.2
19	British Airways	762	-23.8
20	SAS Scandinavian Airlines	740	23.3
21	United Airlines	480	-3.4
22	Aegean Airlines	464	-3.3
23	Brussels Airlines	457	-0.9
24	LOT - Polish Airlines	450	-3.2
25	Ajet	432	18.0

Source: DLR

Air Transport Development in April 2026

Development and Changes Globally and for Germany

Global and German Air Traffic Trends in April 2026

The following diagrams show the development of global and German flight capacity over the last fifteen months, both worldwide and in the individual region.

Fig. 1-2: Global Air Traffic: Slight Growth Overall

In April 2026, the number of scheduled passenger departures worldwide increased by approximately 0.7% year-on-year, reaching 3.2 million departures. The regions with the highest volumes are Asia, North America and Europe. Growth varies significantly by region: the Middle East recorded a sharp decline of around 28.0%, while Africa saw an increase of 4.7%.

Fig. 3-4: Germany: Decline in Total Departures and Regional Shifts

In Germany, approximately 64,400 scheduled passenger departures are expected in April 2026, representing a decrease of 1.6% compared with the previous year. While services to Africa and Asia are expanding, there are slight reductions in flights to Europe, North America and South America, and a significant decline in services to the Middle East. Around 57,100 departures are destined for European airports.

Fig. 1: Development of the global air transport supply

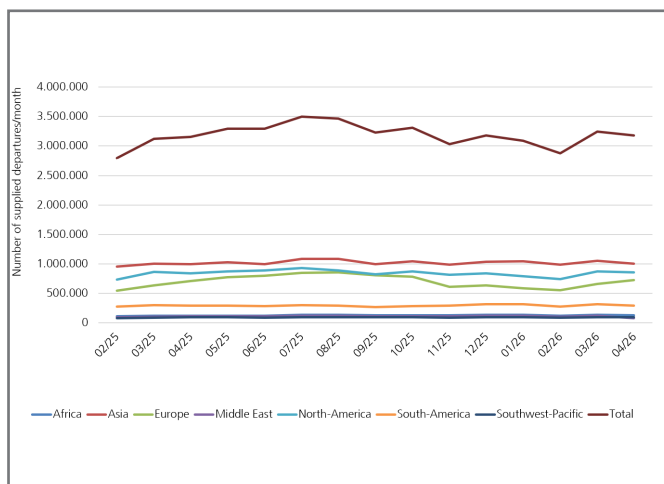


Fig. 2: Changes in the global air transport supply

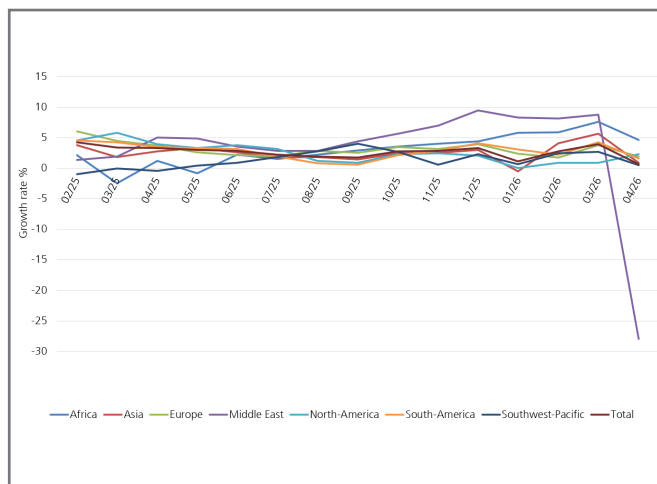


Fig. 3: Development of the German air transport supply

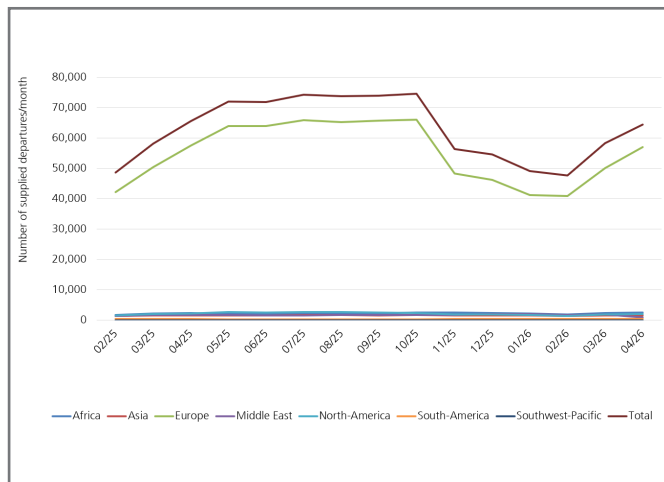
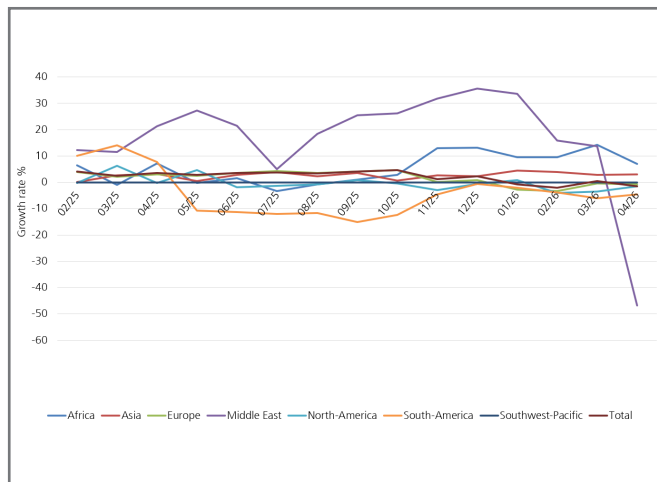


Fig. 4: Changes in the German air transport supply



Source: OAG 2025-2026, DLR 2025-2026

DLR Overview

The DLR is the research center of the Federal Republic of Germany for aerospace. We conduct research and development in aviation, space, energy, transportation, security, and digitalisation. The German Space Agency at DLR is responsible, on behalf of the Federal Government, for planning and implementing German space activities. Two DLR project agencies manage funding programmes and support knowledge transfer.

Climate, mobility, and technology are changing globally. The DLR utilises the expertise of its 58 institutes and facilities to develop solutions for these challenges. Our more than 11,000 employees have a common mission: we explore Earth and space and develop technologies for a sustainable future. In doing so, we contribute to strengthening Germany's knowledge and economic base.

DLR Institute of Air Transport

The DLR Institute of Air Transport researches the complex interactions within the air transport system. We develop future scenarios, conduct economic and business analyses, and model and simulate flight and fleet operations.

We forecast, shape, and evaluate air transport as part of the overall transport system to enhance climate compatibility and performance. To achieve this, we integrate ecological, economic, technological, and social aspects of air transport.

Within DLR, we consolidate expertise in analysing air transport markets and assessing the entire value chain. This positions us as a competent partner for industry, society, and policy makers.

Imprint

Publisher:
German Aerospace Center (DLR)
Institute of Air Transport

Address:
Linder Höhe, 51147 Cologne
Phone: +49 2203 601-4554
Email: luftverkehrsprognose@dlr.de

Editorial Team:
Dr. Peter Berster (peter.berster@dlr.de)
Dr. Marc Gelhausen (marc.gelhausen@dlr.de)
Holger Pabst (holger.pabst@dlr.de)

s.dlr.de/air-transport-forecast

DLR (CC BY-NC-ND 3.0)
Pictures: Titel (jokerpro), Page 3 (Leslie Rodriguez) - stock.adobe.com