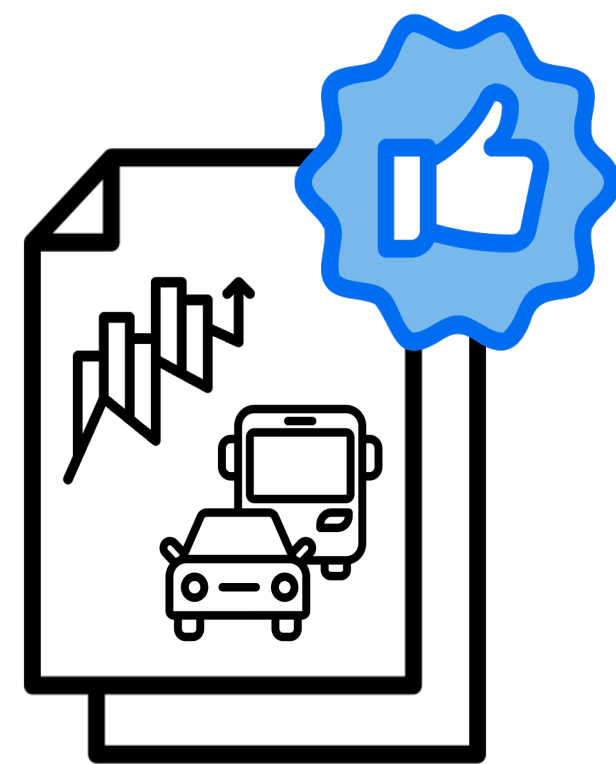


Generating recommendations on empirical methods for transport planning practice and administration: The German Approach

Christine Eisenmann, Matthias Kowald, Ilka Dubernet

EVE 2012

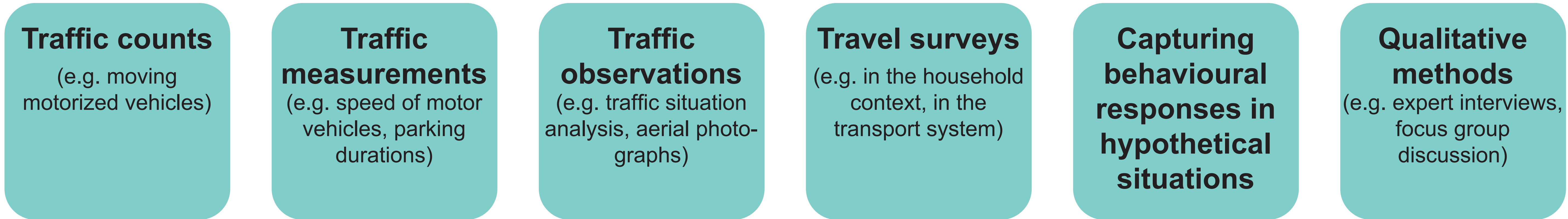


“Recommendation for Empirical Methods in Transport”

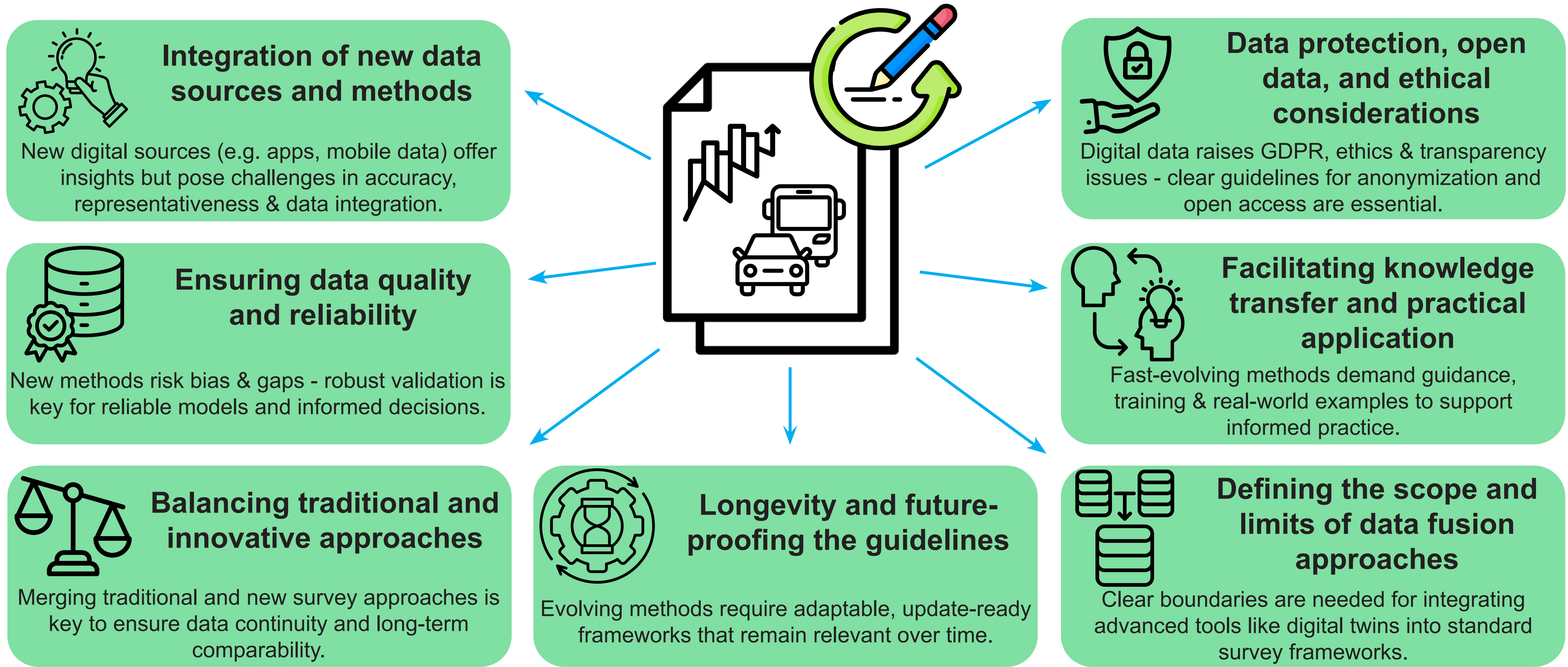
published by German Road and Transportation Research Association

Focus on active data collection methods

Empirical methods in transport



Current revision: key challenges



International perspective

