

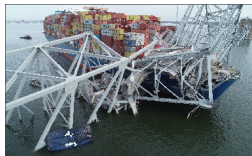
MARITIME WORLD MODEL FOR DATA-BASED THREAT ASSESSMENT

Jannik KLEMM, Jan STOCKBRÜGGER, Frank SILL TORRES



- Potential physical threats for critical infrastructures from ships or humans
 - Detecting of threats are necessary
 - Problem of only a few threats occurred
 - Situation awareness essential for the early detection of threats

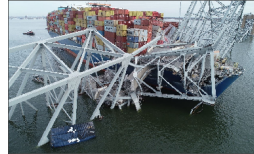
- Potential physical threats for critical infrastructures from ships or humans
 - Detecting of threats are necessary
 - Problem of only a few threats occurred
 - Situation awareness essential for the early detection of threats



© SAFETY4SEA 2024

Motivation

- Potential physical threats for critical infrastructures from ships or humans
 - Detecting of threats are necessary
 - Problem of only a few threats occurred
 - Situation awareness essential for the early detection of threats



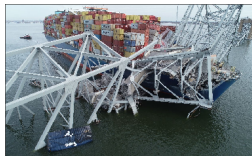
© SAFETY4SEA 2024



© UNEP 2025

- Potential physical threats for critical infrastructures from ships or humans
 - Detecting of threats are necessary
 - Problem of only a few threats occurred
 - Situation awareness essential for the early detection of threats

- Requirements for a world model:
 - Providing data to assess of situations
 - Enabling the use of historical, current, and synthetic data

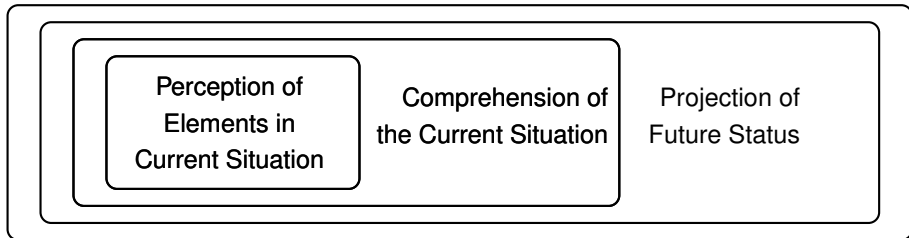


© SAFETY4SEA 2024



© UNEP 2025

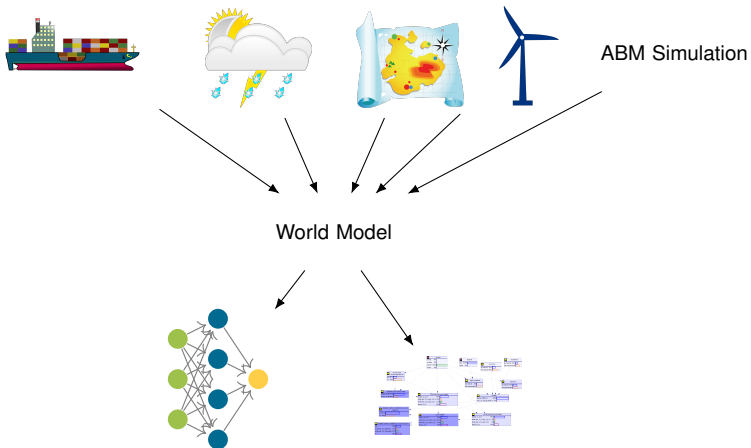
Situation Awareness (adapted from Endsley 1995)



- Object orientated world model for analyzing maritime situations in Fischer 2016:
 - Receiving interface for observations
 - Data association for new observations
 - Access interface for situation analysis
- Ontology-Based Data Access (OBDA) system to detect abnormal behaviors in Brüggemann et al. 2016:
 - Combining data from various data sources in Relational Database Management System (RDBMS)
 - Accessing data via search queries

- Object orientated world model for analyzing maritime situations in Fischer 2016:
 - Receiving interface for observations
 - Data association for new observations
 - Access interface for situation analysis
- Ontology-Based Data Access (OBDA) system to detect abnormal behaviors in Brüggemann et al. 2016:
 - Combining data from various data sources in Relational Database Management System (RDBMS)
 - Accessing data via search queries
- Comparison to our approach:
 - Existing world models consider maritime safety and not security
 - Synthetic data are not included

Concept of World Model



- ship data based on Automatic Identification System (AIS) datasets:
 - positional data: location, speed over ground, draught, etc.
 - static data: ship dimensions, ship type, flag state, etc.

- environmental data:
 - weather data: wind, waves, current, etc.
 - bathymetry data

- infrastructure data based on Electronic Navigational Charts (ENCs):
 - location or geometries (lines, polygons)
 - type of infrastructures: cables, pipelines, offshore wind farms, etc.

Request Interface for Weather Data



```
{  
  "weather_data_features": [str, ...],  
  "location": [{"latitude": float, "longitude": float},  
    ...],  
  "timestamp": [datetime, ...],  
  "interpolation": bool  
}
```

Request Interface for Weather Data



```
{  
  "weather_data_features": [str, ...],  
  "location": [{"latitude": float, "longitude": float},  
    ...],  
  "timestamp": [datetime, ...],  
  "interpolation": bool  
}
```

- Interface to provide access to weather data by interpolating for time and location
- Assessing threats based on these weather condition:
 - Checking feasibility if a platform can be entered

Request Interface for Ship Data



```
{  
  "location_bounds": {  
    "north": float, "south": float,  
    "west": float, "east": float  
  },  
  "time_range": [datetime, datetime],  
  "ais_data_features": [str, ...],  
  "weather_data_features": [str, ...]  
}
```

```
{  
  "location_bounds": {  
    "north": float, "south": float,  
    "west": float, "east": float  
  },  
  "time_range": [datetime, datetime],  
  "ais_data_features": [str, ...],  
  "weather_data_features": [str, ...]  
}
```

- Interface to combine ship and weather data
- Assessing threats based on ship (and weather) data:
 - Checking if a ship is moving towards a wind farm

- World model concept offers interfaces to provide historical and current data from different databases (access for synthetic data missing)
- Several data sources are combined: ship, weather, and infrastructure data (in progress)
- Perception of situations using data from the world model
- Threat assessment coming in future work

Jannik Klemm, M.Sc.

Researcher

T: +49 471 924199 14

M: jannik.klemm@dlr.de

German Aerospace Center

Institute for the Protection of Maritime Infrastructures

Department Resilience of Maritime Systems

Fischkai 1, 27572 Bremerhaven

Germany

<https://www.dlr.de/mi>

BRÜGGEMANN, Stefan; BERETA, Konstantina; XIAO, Guohui; KOUBARAKIS, Manolis, 2016. Ontology-Based Data Access for Maritime Security. In: SACK, Harald; BLOMQVIST, Eva; D'AQUIN, Mathieu; GHIDINI, Chiara; PONZETTO, Simone Paolo; LANGE, Christoph (eds.). *The Semantic Web. Latest Advances and New Domains*. Cham: Springer International Publishing, pp. 741–757. ISBN 978-3-319-34129-3. Available from DOI: 10.1007/978-3-319-34129-3_45.

ENDSLEY, Mica R., 1995. Toward a Theory of Situation Awareness in Dynamic Systems. *Human Factors* [online]. Vol. 37, no. 1, pp. 32–64 [visited on 2025-05-20]. ISSN 0018-7208. Available from DOI: 10.1518/001872095779049543. Publisher: SAGE Publications Inc.

FISCHER, Yvonne, 2016. *Wissensbasierte probabilistische Modellierung für die Situationsanalyse am Beispiel der maritimen Überwachung*. Available from DOI: 10.5445/KSP/1000051065. PhD Thesis. Karlsruher Institut für Technologie (KIT). ISBN: 978-3-7315-0460-3 ISSN: 1863-6489 Series: Karlsruher Schriften zur Anthropomatik / Lehrstuhl für Interaktive Echtzeitsysteme, Karlsruher Institut für Technologie ; Fraunhofer-Inst. für Optronik, Systemtechnik und Bildauswertung IOSB Karlsruhe Volume: 23.

SAFETY4SEA, 2024. *NTSB Investigation: Contact of containership Dali with the Francis Scott Key Bridge* [online] [visited on 2025-05-20]. Available from: <https://safety4sea.com/ntsb-investigation-contact-of-containership-dali-with-the-francis-scott-key-bridge/>. Section: Accidents.

UNEP, 2025. *Pipeline blasts released record-shattering amount of methane: UNEP study* [online] [visited on 2025-05-20]. Available from: <https://www.unep.org/news-and-stories/story/pipeline-blasts-released-record-shattering-amount-methane-unep-study>. Section: News and Stories.