

# SASCHA KORF



## SHARED WORK WITH:

David Kerkmann    Jens Henrik Göbbert  
Khoa Nguyen      Achim Basermann  
Daniel Abele      Martin J. Kühn  
Alain Schengen    Michael Meyer-Hermann  
Carlotta Gerstein

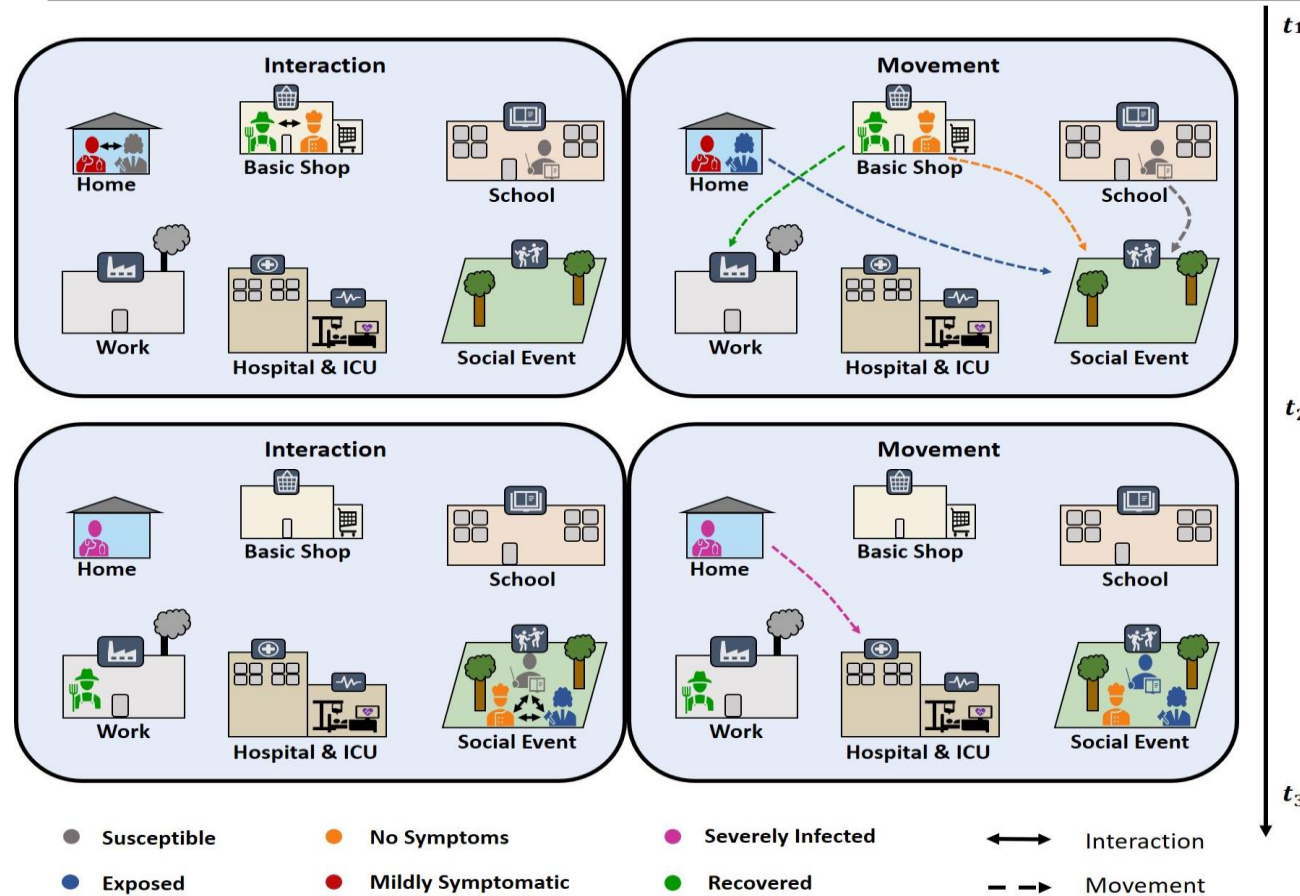
---

## AGENT-BASED MODELING FOR REALISTIC REPRODUCTION OF HUMAN MOBILITY AND CONTACT BEHAVIOR TO EVALUATE TEST AND ISOLATION STRATEGIES IN EPIDEMIC INFECTIOUS DISEASE SPREAD

3RD (INTER-) NATIONAL CONFERENCE ON INFECTIOUS DISEASE MODELING

26 – 28 FEBRUARY 2025 IN BERLIN

# ABM Overview



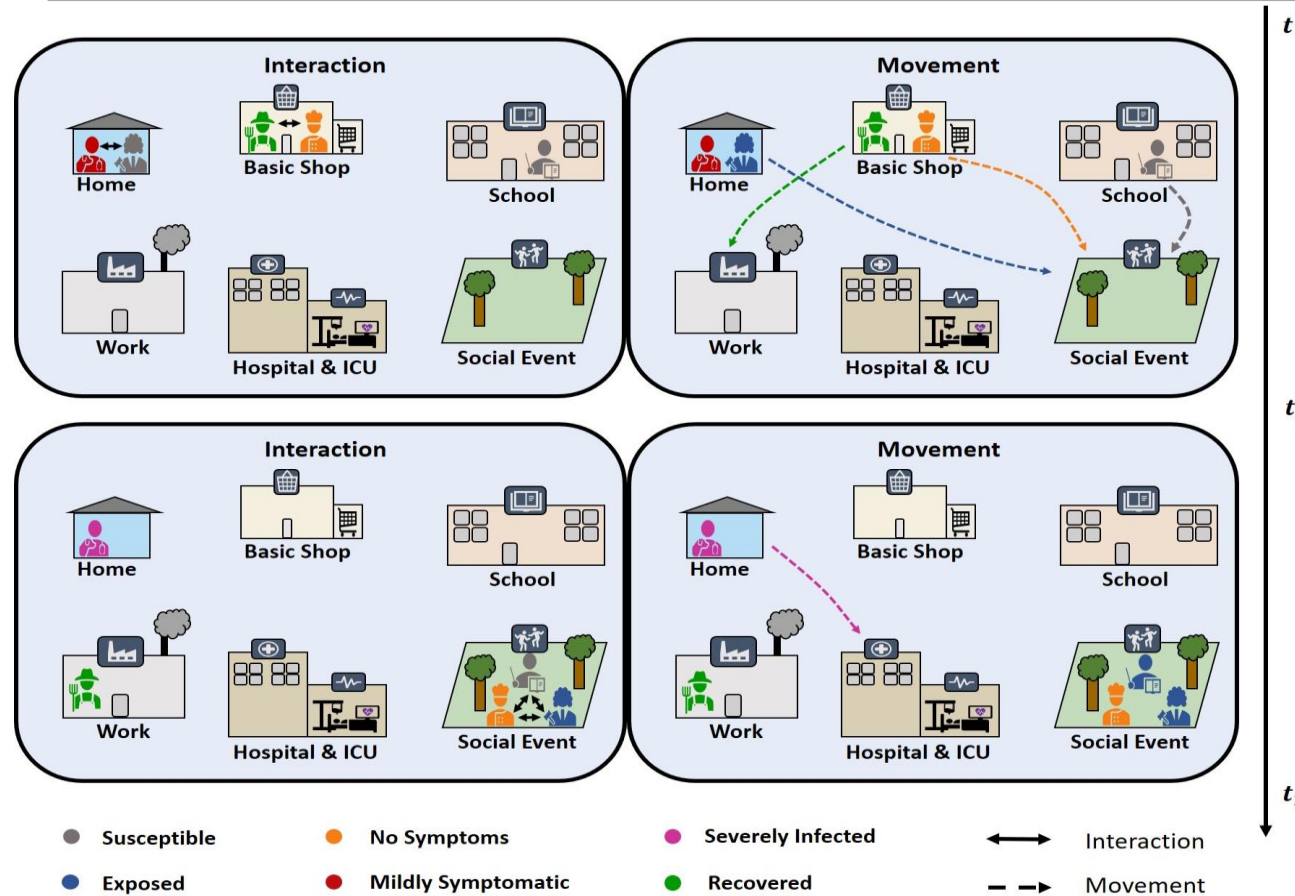
## Algorithm 1: Trip-based agent-based simulation

```

1  $t \leftarrow t_0 \in \mathbb{R}$ 
2 while  $t \leq t_{\max}$  do
3   for each location do
4     Execute agents' interactions
5   for each agent do
6     Perform individual movement
7    $t \leftarrow t + \Delta t$ 

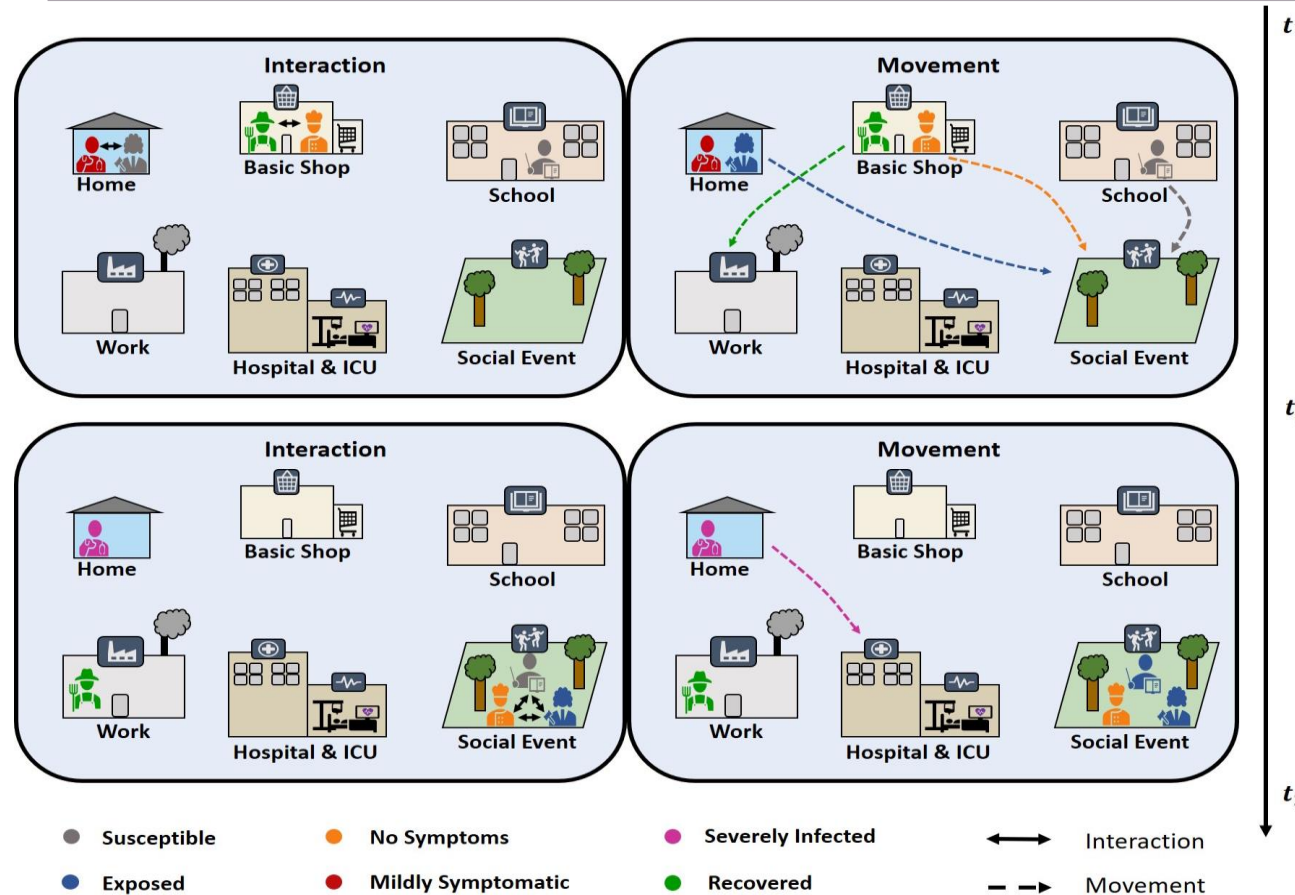
```

# ABM Interaction



- **Interactions** happen at locations where there is an infected agent
- Probability is determined based upon several features such as: age, susceptibility, or amount and infectivity of infected agents

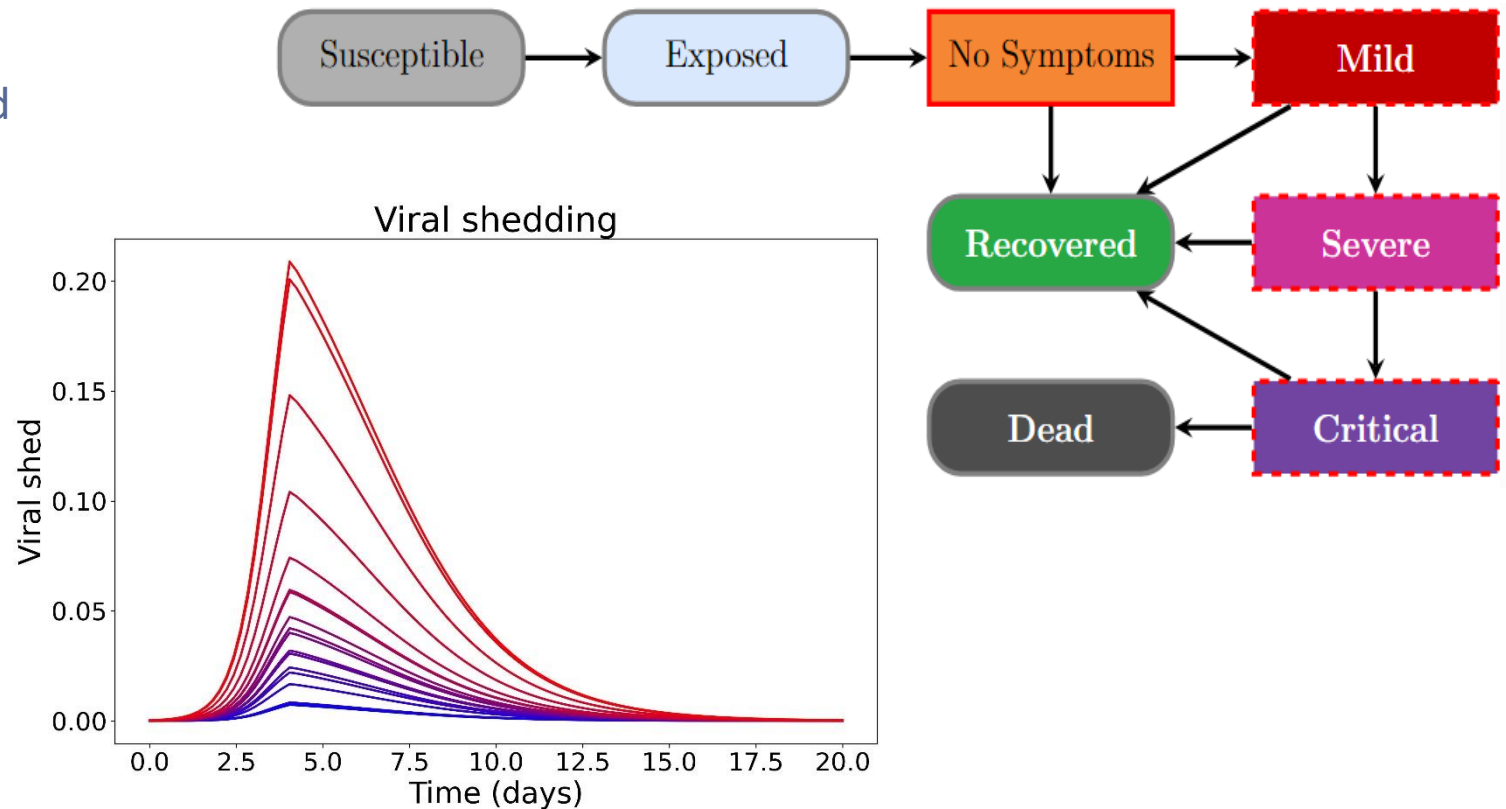
# ABM Movement



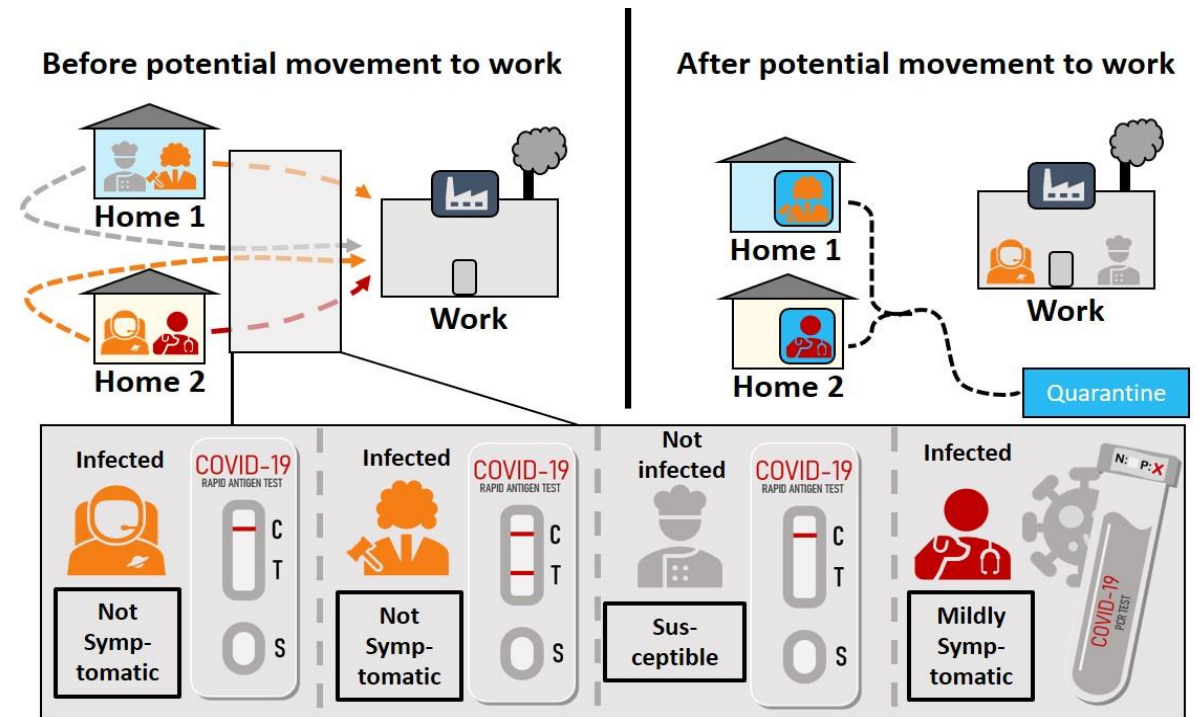
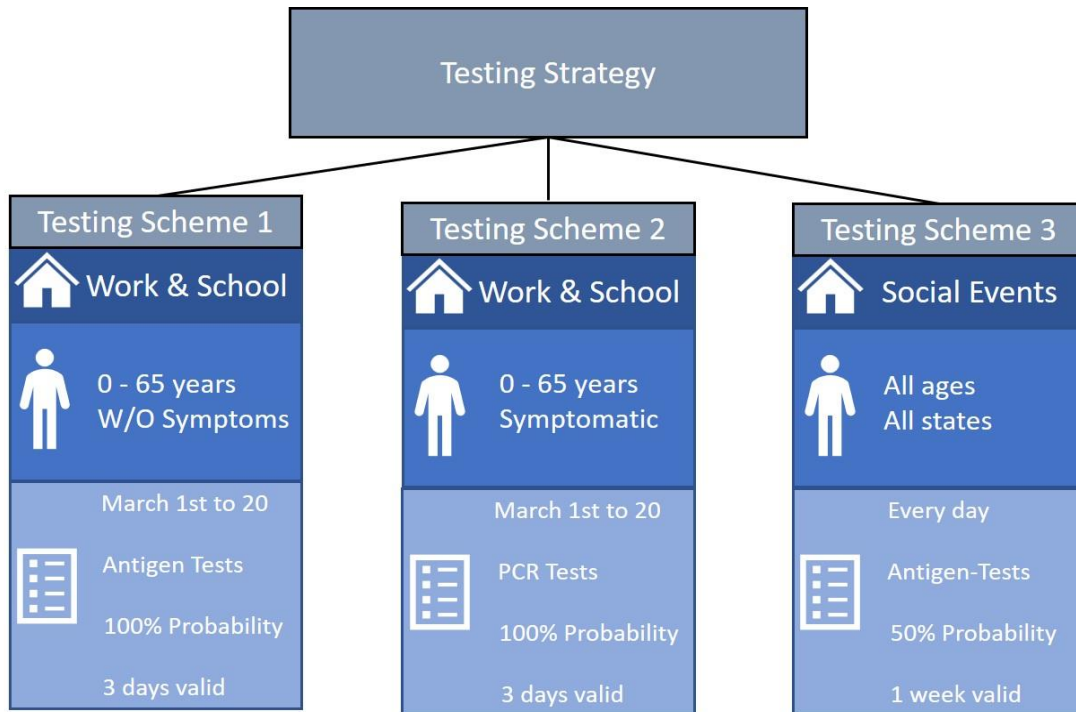
- Two ways of **moving** to locations:
  - **Rules:** Predetermined rules, e.g., going to work at specific times, going to the hospital when severely infected, etc.
  - **Trips:** Predefined trips from one location to another at a specific time for an specific agent

# ABM Infection Model

- Infectiousness of an agent is determined by a viral shed curve
- Viral shed is based upon a viral load curve
- For each infection a different viral shed curve is drawn
- The course of an infection is dependent upon multiple factors, e.g., age and vaccination status



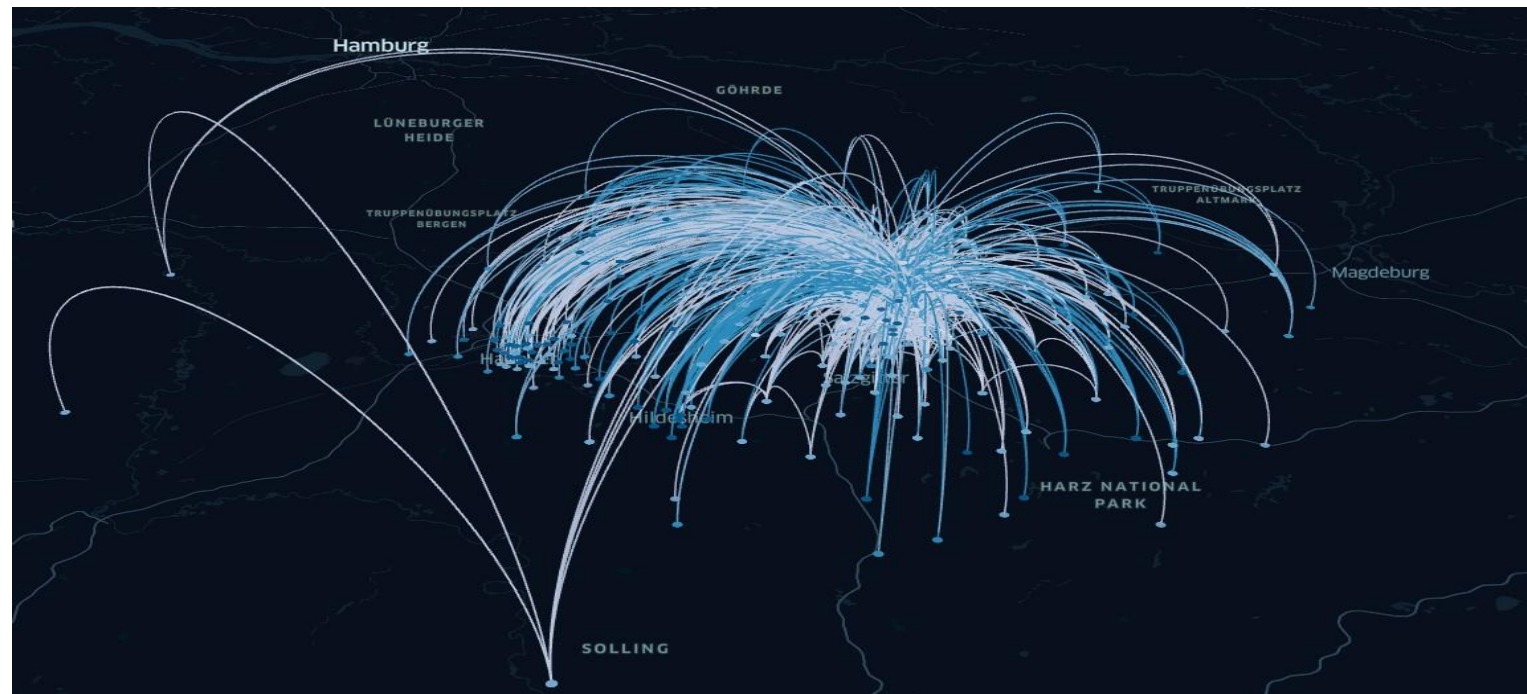
# ABM Testing



# ABM

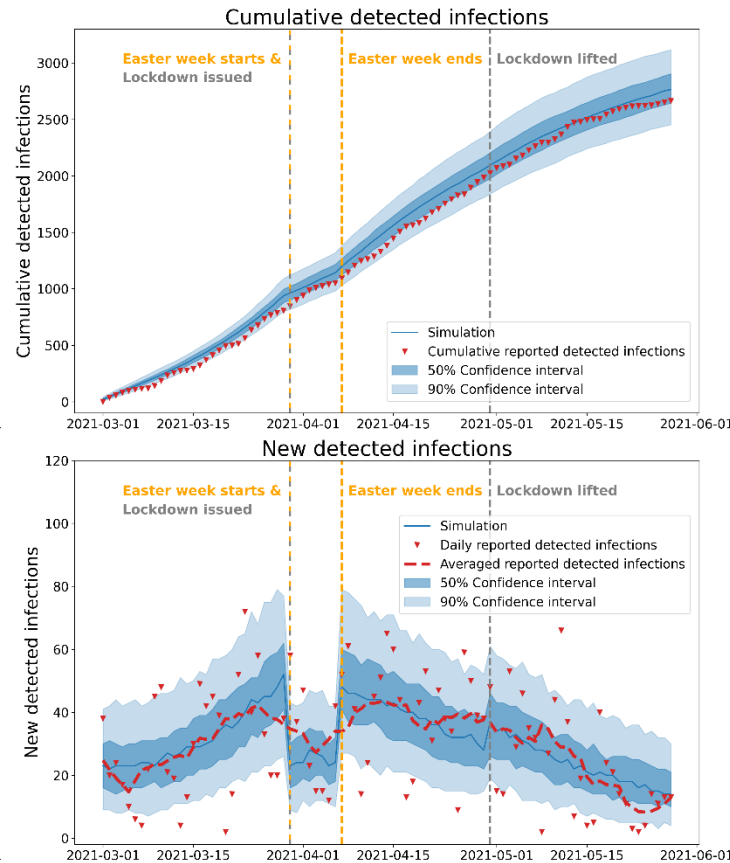
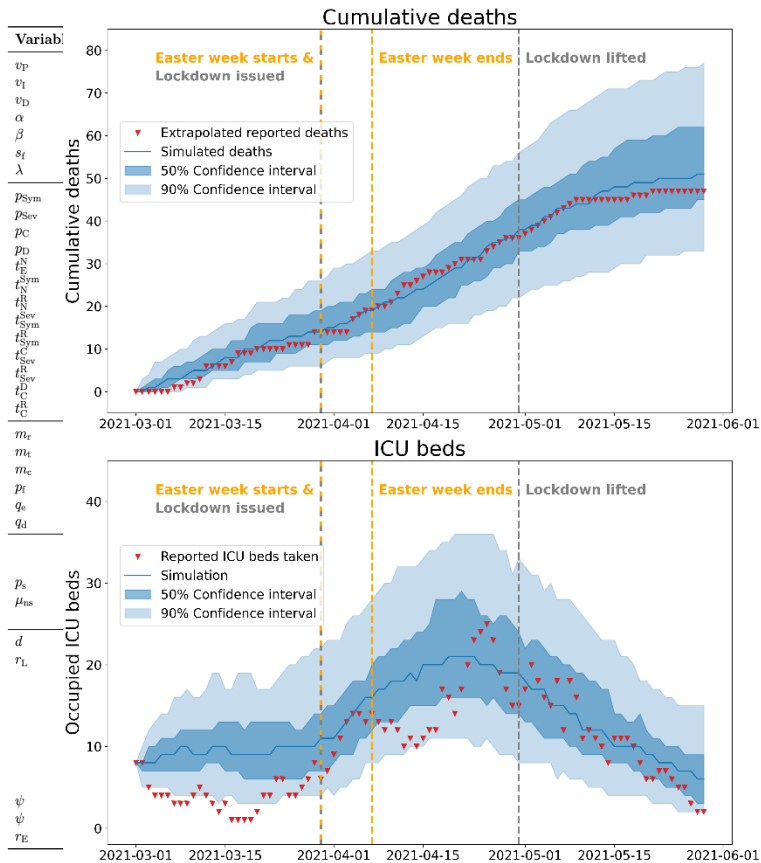
## Trips for Brunswick demonstrator model

- Around 370.000 persons from Brunswick and the surrounding area
- Over 1.3 million representative trips per day based upon MiD Data



# ABM Scenario

0  
4



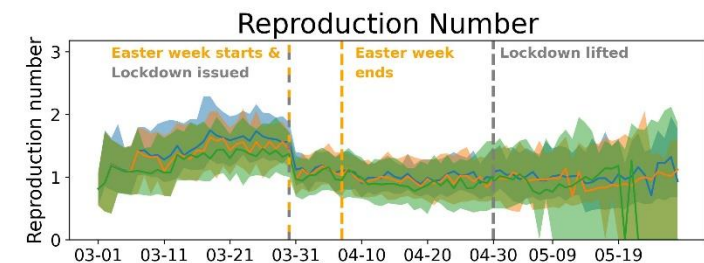
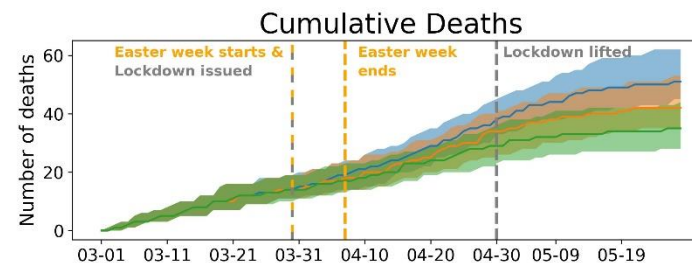
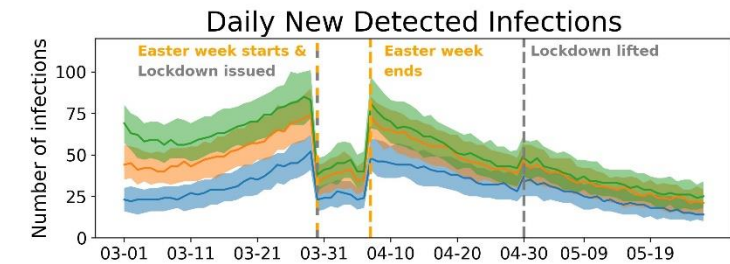
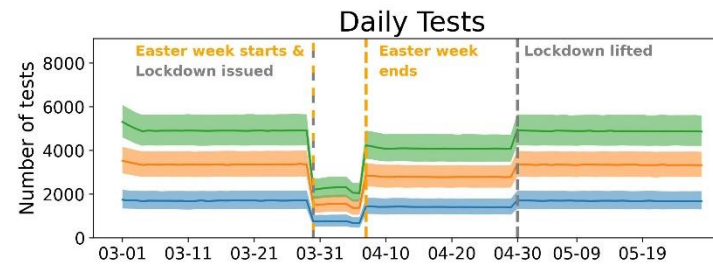
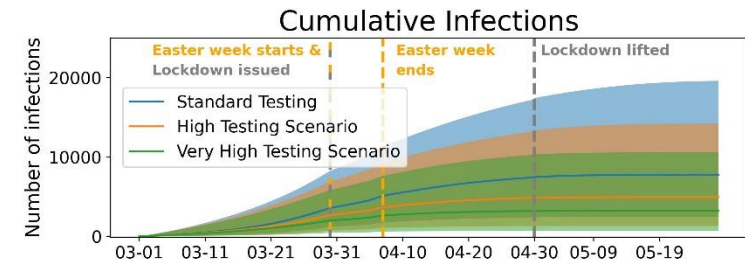
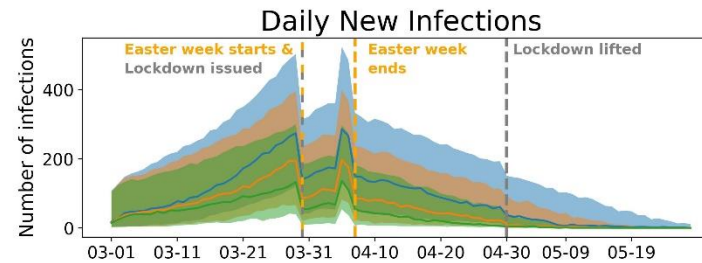
- Grid search to fit 5 parameters to real-world data
- We utilized shared and distributed memory parallelization
- Final grid search ran 2.592 concurrent simulations on a total of 3.456 compute cores multiple times resulting in 85.536 simulations in 8 hours



# ABM

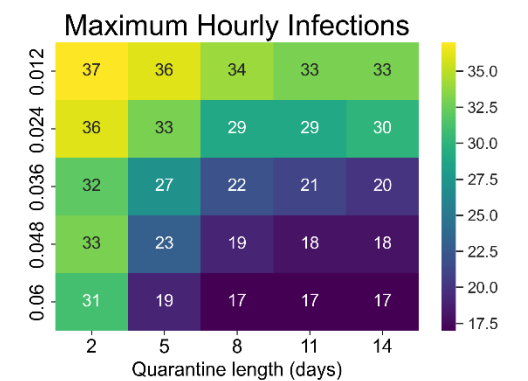
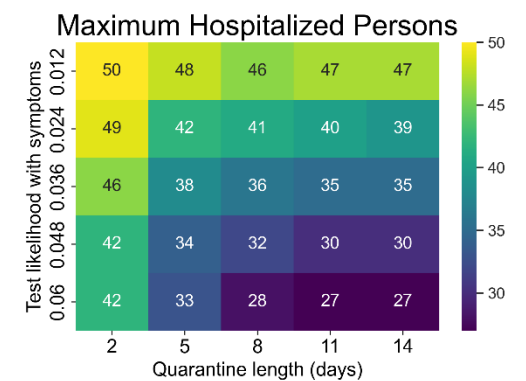
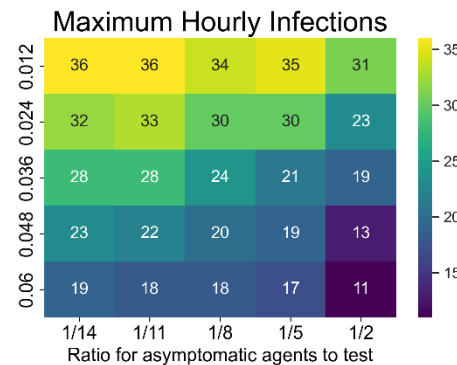
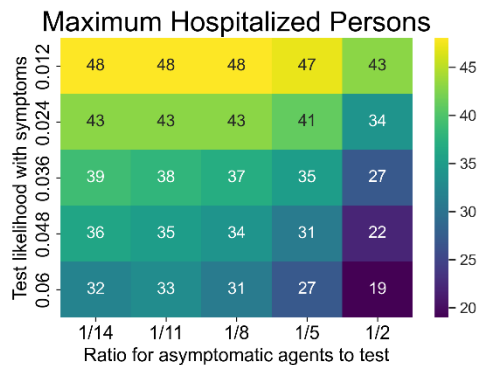
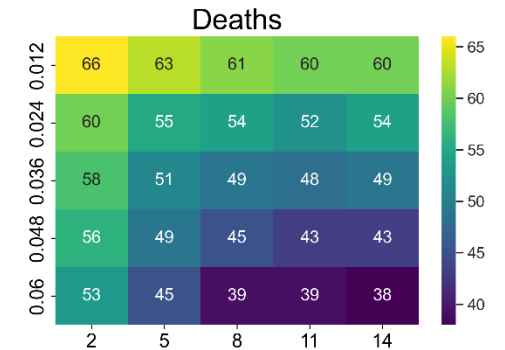
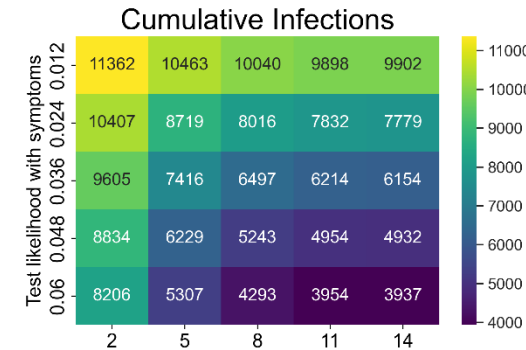
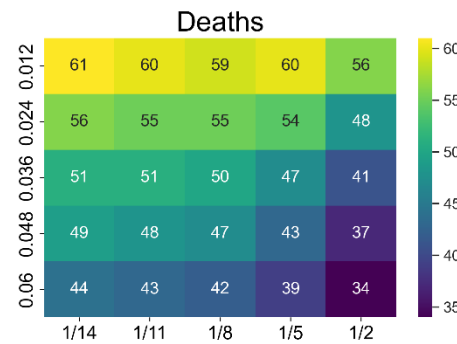
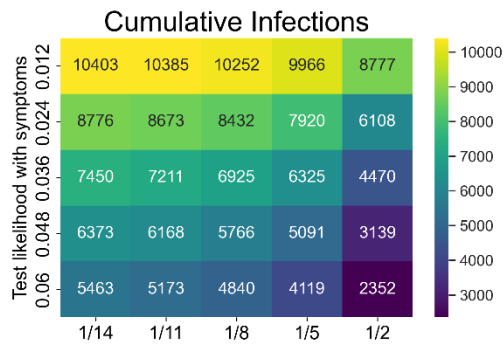
## Results Scenarios

- Three different scenarios for the likelihood of testing when moving to a location
- Fewer tests during Easter week with special gatherings at Easter Sunday and Monday
- Less mobility when a lockdown is issued from March 29, 2021 to April 30, 2021

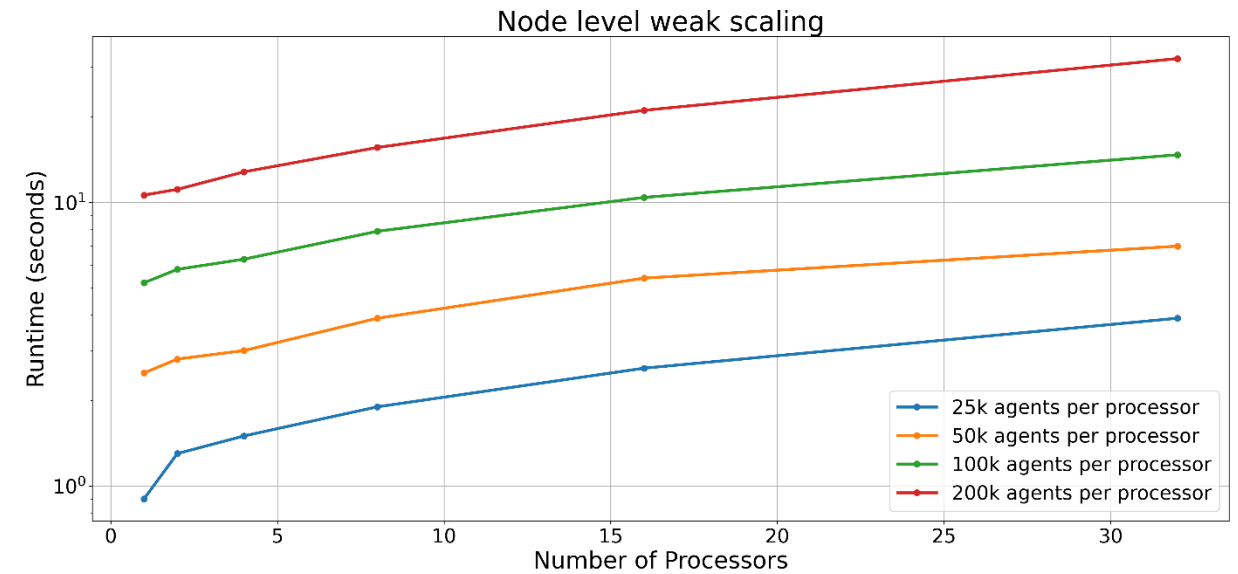
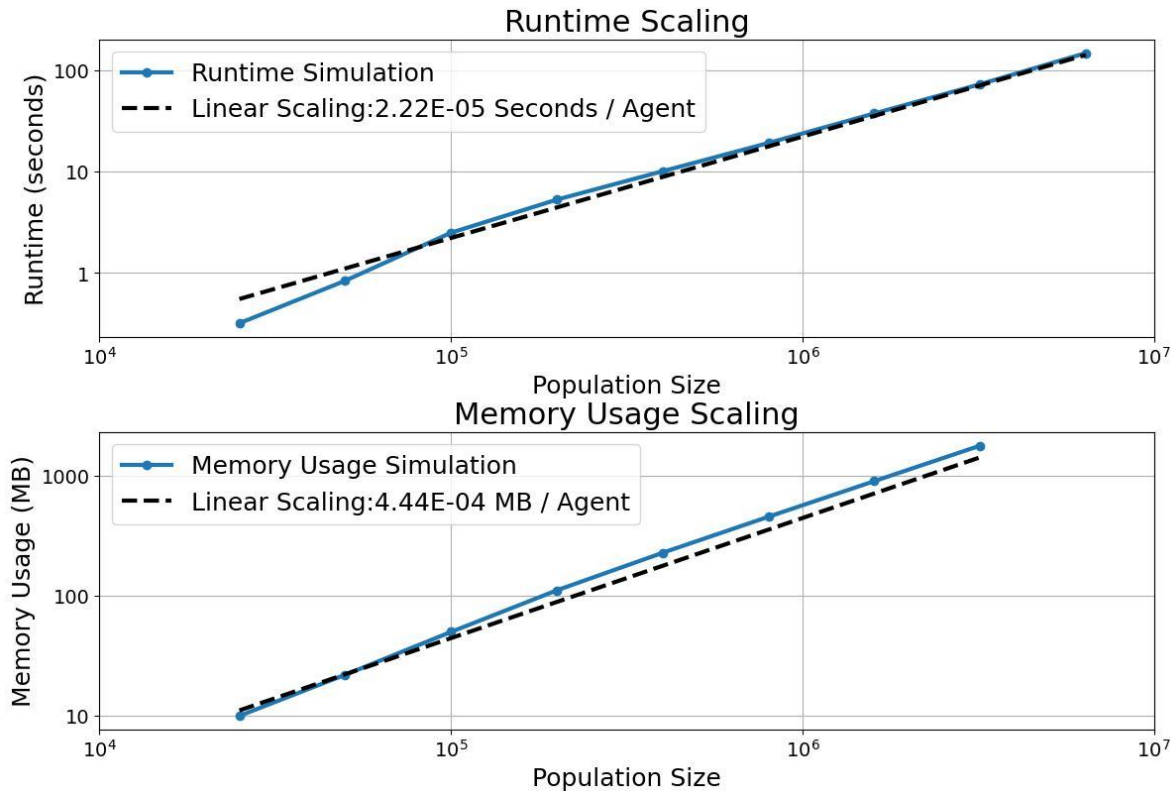


# ABM

## Results Parameter Variation



# ABM Scaling Results





Paper (in Review) Co-authors



David Kerkmann  
Khoa Nguyen  
Daniel Abele  
Alain Schengen  
Carlotta Gerstein  
Jens Henrik Göbbert  
Achim Basermann  
Martin J. Kühn  
Michael Meyer-Hermann

SPONSORED BY THE



Gefördert durch:



aufgrund eines Beschlusses  
des Deutschen Bundestages



Thank you for your attention!  
Questions?

