



GLOBAL AVIATION MONITOR

February 2025

Statistical Report of Global, European and German Air Transport

Contents February 2025

Number of Monthly Departures _____	04
At the Largest Airports in the World _____	04
At the Largest Airports in Europe _____	04
At the Largest Airports in Germany _____	05
By the Largest Airlines in the World _____	05
By the Largest Airlines in Europe from European Airports _____	06
By the Largest Airlines in Germany from German Airports _____	06
Development of Air Transport Supply _____	07
Development of the Global Air Transport Supply _____	07
Changes in the Global Air Transport Supply _____	07
Development of the German Air Transport Supply _____	07
Changes in the German Air Transport Supply _____	07
Imprint _____	08



The DLR Global Aviation Monitor

The Global Aviation Monitor is a statistical report series from the Institute of Air Transport of the German Aerospace Center, which serves as a supplement to various statistics, such as those from the Federal Statistical Office or the German Airports Association (ADV).

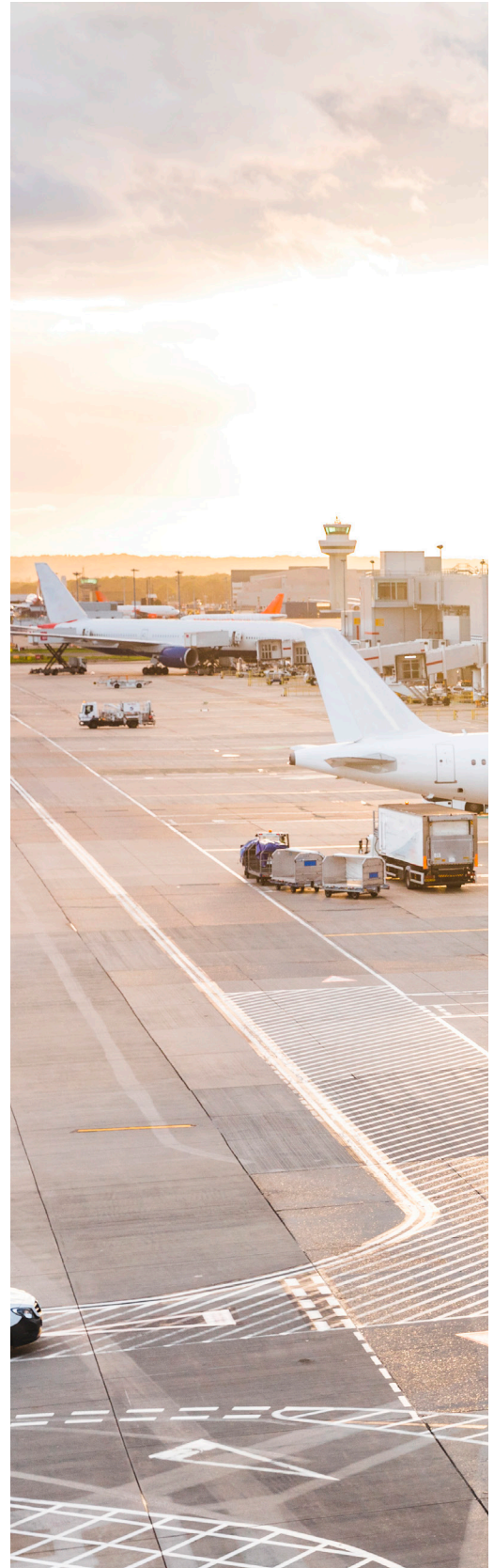
It provides monthly reports on the supply of flights in Germany, Europe, and worldwide. The development of flights over the last fifteen months is presented in the form of a time series. Additionally, there is a monthly ranking of the largest airports and airlines in Germany, Europe, and worldwide, which are compared to the values of the previous year. The data is released during each month and represents the planned data for the current month.

This report fills a gap that is of interest to both airports and airlines in assessing their position on a global scale. It is of interest to policy-makers, administrators, industry stakeholders, and tourism offices to gauge the performance of their region. In the event of significant changes, it is worthwhile to examine closely what has caused them. Due to its monthly updates, the report can serve as a leading indicator for trends and developments.



The report is being developed at the Air Transport Development department of the DLR Institute of Air Transport.

Global air traffic and emissions are expected to grow significantly in the coming decades, necessitating advancements in technology to align with sustainability goals. The Department for Air Transport Development conducts research on forecasting methods to predict air traffic demand and supply, considering global, regional, and local scenarios for various aircraft types. These forecasts assist policymakers, airlines, and airports in planning infrastructure, connectivity, and sustainability measures while evaluating the impact of emissions and noise. By integrating ecological, economic, and social considerations, the department explores the potential of new technologies to improve the sustainability of air transport and guides industry stakeholders in achieving climate-compatible aviation. Their efforts include scenario planning, technical assessments, and the development of roadmaps for sustainable advancements in the aviation sector.



Number of Monthly Departures in February 2025

Ranking by Airports Globally, for Europe & Germany

Global airport departures surge in February 2025

At 22 of the world's 25 largest airports, the number of departures increased in February 2025 compared to the previous year. The four largest airports are in North America, with Atlanta leading the ranking at approximately 28,400 departures. In 5th, 7th, and 8th places are the Asian airports Shanghai Pudong, Tokyo, and Guangzhou, while London Heathrow and Istanbul occupy 11th and 12th places in Europe. Frankfurt has dropped to 33rd place globally, down from 27th in February last year.

This figure shows the twenty-five largest **airports worldwide**, measured in passenger flights.

Europe's busiest airports in February 2025

The largest European airports with the highest number of passenger flights in February 2025 were London Heathrow, Istanbul, Amsterdam, Paris, Madrid, and Frankfurt, each with more than 13,000 scheduled departures. Among them, only Frankfurt showed a downward trend compared to the previous year.

This table shows the twenty-five largest **European airports**, measured in passenger flights.

Tab. 1: Number of monthly departures at the largest airports in the world

Rank	Airport	02/2025	Growth rate
1	Atlanta Hartsfield-Jackson Intl	28,419	5.8
2	Chicago O'Hare International	26,703	9.2
3	Dallas/Fort Worth Intl	26,237	3.8
4	Denver Intl	24,332	3.5
5	Shanghai Pudong International	20,426	4.9
6	Charlotte	20,286	4.7
7	Tokyo Haneda	18,852	2.5
8	Guangzhou	18,758	-9.7
9	Los Angeles International	18,610	2.2
10	Delhi	18,004	5.8
11	London Heathrow	17,921	1.9
12	Istanbul	17,904	4.5
13	Dubai	17,110	3.6
14	Phoenix Sky Harbor Intl	17,006	6.1
15	Beijing Capital	16,839	4.6
16	Amsterdam	16,588	0.6
17	Shenzhen	16,351	-0.3
18	Las Vegas McCarran International	16,128	5.7
19	Chengdu Tianfu	16,104	2.2
20	Miami International	15,843	2.1
21	Houston George Bush	15,510	2.9
22	New York J F Kennedy	15,409	1.3
23	Orlando International	15,314	-1.5
24	Paris Charles de Gaulle	15,251	10.7
25	Kuala Lumpur International	14,923	12.3

Source: DLR

Tab. 2: Number of monthly departures at the largest airports in Europe

Rank	Airport	02/2025	Growth rate
1	London Heathrow	17,921	1.9
2	Istanbul	17,904	4.5
3	Amsterdam	16,588	0.6
4	Paris Charles de Gaulle	15,251	10.7
5	Madrid Barajas	14,482	5.6
6	Frankfurt	13,895	-2.0
7	Barcelona	11,515	7.7
8	Rome Fiumicino	11,054	9.8
9	Munich	10,355	-0.4
10	Istanbul Sabiha Gokcen	9,598	8.4
11	London Gatwick	8,538	3.0
12	Zurich	8,209	8.0
13	Lisbon	7,862	2.7
14	Moscow Sheremetyevo	7,690	13.3
15	Copenhagen	7,666	6.4
16	Vienna	7,442	9.0
17	Dublin	7,266	-0.8
18	Athens Intl Eleftherios Venizelos	7,218	13.9
19	Paris Orly	7,067	8.8
20	Oslo	7,051	6.3
21	Milan Malpensa	6,600	14.4
22	London Stansted	6,319	11.1
23	Manchester International	6,254	10.5
24	Berlin	6,141	14.1
25	Stockholm Arlanda	6,137	-0.5

Source: DLR

Number of Monthly Departures in February 2025

Tab. 3: Number of monthly departures at the largest airports in Germany

Rank	Airport	02/2025	Growth rate
1	Frankfurt	13,895	-2.0
2	Munich	10,355	-0.4
3	Berlin	6,141	14.1
4	Dusseldorf	4,401	1.0
5	Hamburg	3,656	8.8
6	Stuttgart	2,110	9.7
7	Cologne/Bonn	1,877	11.3
8	Hanover	1,097	6.3
9	Nuremberg	975	21.1
10	Memmingen	702	30.1
11	Bremen	624	18.8
12	Dortmund	620	13.3
13	Hahn	448	55.7
14	Leipzig/Halle	358	-13.0
15	Karlsruhe/Baden Baden	346	48.7
16	Weeze	343	41.0
17	Dresden	280	-5.5
18	Munster	162	-26.4
19	Paderborn	71	-16.4
20	Saarbrücken	63	-6.8
21	Augsburg	32	----
22	Hamburg Finkenwerder	24	----
23	Friedrichshafen	18	-81.5
24	Moenchengladbach	16	27.5
25	Westerland	15	158.9

Source: DLR

Tab. 4: Number of monthly departures by the largest airlines in the world

Rank	Airline	02/2025	Growth rate
1	American Airlines	166,055	5.4
2	Delta Air Lines	127,851	7.0
3	United Airlines	124,095	8.8
4	Southwest Airlines	102,333	-1.5
5	China Eastern Airlines	72,185	2.1
6	Ryanair	69,064	16.5
7	China Southern Airlines	64,966	-5.4
8	IndiGo Air	62,624	14.9
9	Air China	49,112	2.1
10	LATAM Airlines	44,486	5.0
11	easyJet	38,430	8.6
12	Alaska Airlines	31,364	6.9
13	Turkish Airlines	29,180	-22.3
14	All Nippon Airways	28,405	2.2
15	Air Canada	27,941	-0.7
16	Lufthansa German Airlines	27,155	-9.3
17	Azul	24,785	1.7
18	Japan Airlines International	23,918	0.6
19	JetBlue Airways Corporation	23,475	-4.7
20	Hainan Airlines	23,165	5.2
21	British Airways	22,957	-0.5
22	Shenzhen Airlines	21,629	-2.9
23	Xiamen Airlines Company	21,271	10.0
24	Qantas Airways	20,940	-2.0
25	AVIANCA	20,331	2.1

Source: DLR

Low cost hubs thrive while smaller German airports struggle

With the exception of Germany's largest airports, Frankfurt and Munich, almost all major airports recorded positive growth rates in February 2025. Airports where low cost carriers operate extensively, such as Hahn and Memmingen, experienced particularly high growth rates. In contrast, very small airports like Friedrichshafen saw a significant decline in departures. On the other hand, Moenchengladbach now offers flights with very small aircraft.

Here, the twenty-five largest **German airports** are listed, measured in passenger flights.

Ranking by Airlines Globally, for Europe & Germany

Global airlines' flight schedules in February 2025: Mixed trends

Most major airlines worldwide increased their scheduled flights in February 2025. However, low-cost carriers like Southwest and JetBlue saw declines. American Airlines led with around 166,100 departures, while Lufthansa ranked 16th with 27,000 departures, showing a downward trend. Turkish Airlines also saw a sharp decline, partly due to shifting flights to its new subsidiary, Ajet. When comparing with the previous year, factors like holidays and public holidays must be considered, as these can affect flight numbers.

This figure shows the **world's** twenty-five largest airlines, measured in passenger flights.

Number of Monthly Departures in February 2025

Ranking by Airlines Globally, for Europe & Germany

Ryanair leads European flight numbers, easyJet follows

Ryanair offered the largest number of flights in Europe in February 2025, with nearly 67,000 departures, marking an increase of 16.3% compared to last year, followed by easyJet with around 37,000 departures. Both the parent company Wizz Air and its subsidiary, Wizz Air Malta, were among the top 25 in Europe.

The twenty-five **airlines in Europe** with the most passenger flights are listed here.

Tab. 5: Number of monthly departures by the largest airlines in Europe from European airports

Rank	Airline	02/2025	Growth rate
1	Ryanair	67,023	16.3
2	easyJet	36,950	7.6
3	Lufthansa German Airlines	25,243	-9.7
4	Turkish Airlines	24,093	-26.0
5	British Airways	20,058	-0.8
6	KLM-Royal Dutch Airlines	17,324	-0.8
7	Air France	17,248	8.7
8	SAS Scandinavian Airlines	16,283	9.4
9	Iberia	15,703	2.4
10	Vueling Airlines	15,171	8.8
11	Pegasus Airlines	14,647	12.8
12	Aeroflot Russian Airlines	14,380	11.1
13	Wizz Air Malta	9,351	7.7
14	Swiss	9,286	4.5
15	Wizz Air	9,254	5.0
16	Ajet	9,201	----
17	Wideroe's Flyveselskap	9,133	1.5
18	ITA Airways	8,773	-3.9
19	Finnair	8,601	17.8
20	Eurowings	8,559	9.9
21	TAP Air Portugal	7,333	2.6
22	Austrian Airlines AG	7,185	9.4
23	LOT - Polish Airlines	7,086	7.6
24	Aegean Airlines	6,824	11.7
25	Aer Lingus	6,682	-2.1

Source: DLR

Lufthansa, Eurowings, and Ryanair lead German flight numbers

In February 2025, the airline with the largest number of flights in Germany was Lufthansa, with around 16,800 departures, followed by Eurowings with over 5,100 departures and Ryanair with about 3,500 departures. Lufthansa has seen a decline, which is partly offset by its new subsidiary, Lufthansa City Airlines.

This table ranks the twenty-five **airlines** that offer the most passenger flights in **Germany**.

Tab. 6: Number of monthly departures by the largest airlines in Germany from German airports

Rank	Airline	02/2025	Growth rate
1	Lufthansa German Airlines	16,796	-9.3
2	Eurowings	5,104	13.2
3	Ryanair	3,457	30.5
4	Air Dolomiti	1,755	28.2
5	KLM-Royal Dutch Airlines	1,249	0.7
6	easyJet	1,177	11.3
7	British Airways	1,020	-11.7
8	Austrian Airlines AG	1,014	18.7
9	Condor Flugdienst	1,009	24.7
10	Turkish Airlines	884	-22.9
11	Pegasus Airlines	820	16.8
12	Swiss	771	-4.5
13	Air France	763	11.8
14	SunExpress	679	1.5
15	Wizz Air	628	-0.8
16	Wizz Air Malta	610	42.6
17	TUIfly	541	-3.6
18	Lufthansa City Airlines	530	----
19	Eurowings Discover	529	28.0
20	SAS Scandinavian Airlines	495	4.0
21	Iberia	390	-1.7
22	LOT - Polish Airlines	372	4.4
23	Aegean Airlines	367	7.1
24	United Airlines	361	-2.6
25	Finnair	340	18.6

Source: DLR

Air Transport Development in February 2025

Development and Changes Globally and for Germany

Global and German air traffic trends in February 2025

The following diagrams show the development of global and German flight capacity over the last fifteen months, both worldwide and in the individual region.

Fig. 1-2: **Passenger flights grew by 4.2% worldwide in February 2025**

In February 2025, the number of scheduled passenger flights worldwide grew by around 4.2% compared to the previous year, reaching 2.8 million departures. The regions with the highest volumes were Asia, North America, and Europe, with Europe showing the strongest growth at around 6%.

Fig. 3-4: **Germany's air traffic grew by 4.1% in February 2025**

In February 2025, around 48,700 scheduled departures in passenger air traffic were expected in Germany, marking a 4.1% growth compared to last year. Of these, approximately 42,200 flights will be to European airports.

Fig. 1: **Development** of the **global air transport supply**

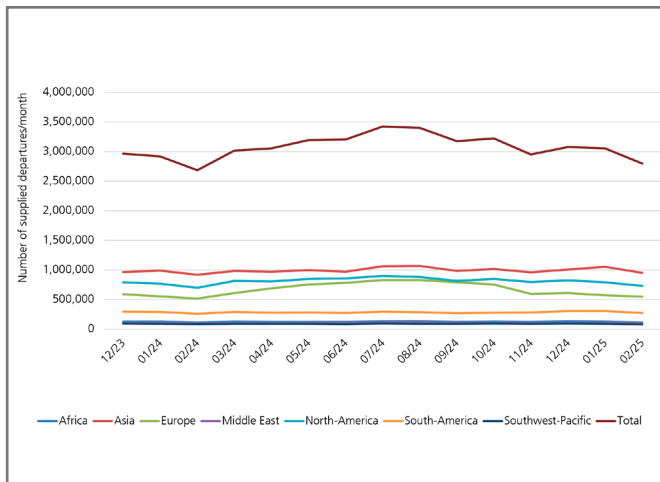


Fig. 2: **Changes** in the global air transport supply

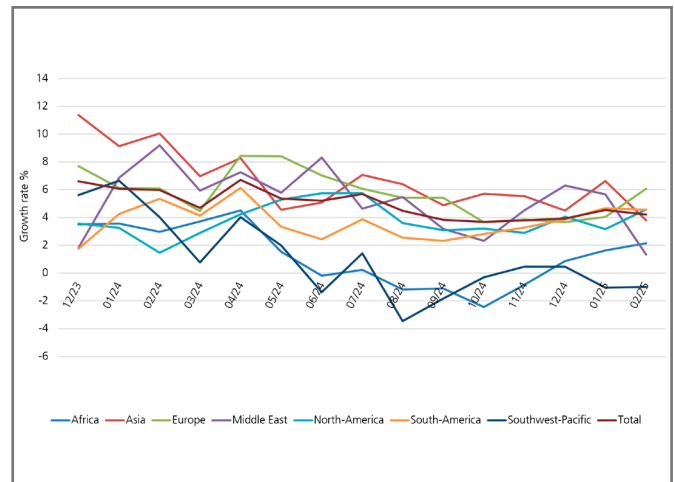


Fig. 3: **Development** of the **German air transport supply**

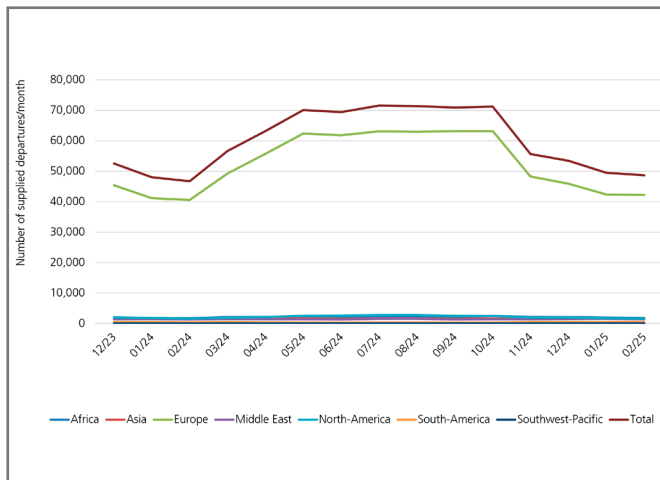
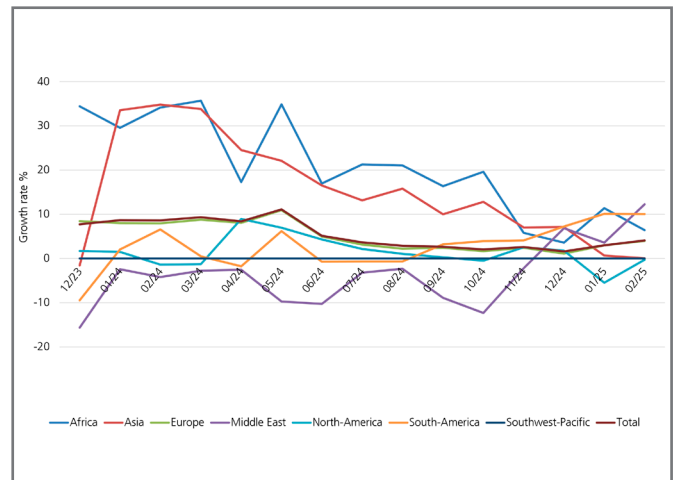


Fig. 4: **Changes** in the German air transport supply



Source: OAG 2023-2025, DLR 2023-2025

DLR Overview

The DLR is the research center of the Federal Republic of Germany for aerospace. We conduct research and development in aviation, space, energy, transportation, security, and digitalisation. The German Space Agency at DLR is responsible, on behalf of the Federal Government, for planning and implementing German space activities. Two DLR project agencies manage funding programmes and support knowledge transfer.

Climate, mobility, and technology are changing globally. The DLR utilises the expertise of its 54 institutes and facilities to develop solutions for these challenges. Our more than 10,000 employees have a common mission: we explore Earth and space and develop technologies for a sustainable future. In doing so, we contribute to strengthening Germany's knowledge and economic base.

DLR Institute of Air Transport

The DLR Institute of Air Transport researches the complex interactions within the air transport system. We develop future scenarios, conduct economic and business analyses, and model and simulate flight and fleet operations.

We forecast, shape, and evaluate air transport as part of the overall transport system to enhance climate compatibility and performance. To achieve this, we integrate ecological, economic, technological, and social aspects of air transport.

Within DLR, we consolidate expertise in analysing air transport markets and assessing the entire value chain. This positions us as a competent partner for industry, society, and policy makers.

Imprint

Publisher:
German Aerospace Center (DLR)
Institute of Air Transport

Address:
Linder Höhe, 51147 Cologne
Phone: +49 2203 601-4554
Email: luftverkehrsprognose@dlr.de

Editorial Team:
Dr. Peter Berster (peter.berster@dlr.de)
Dr. Marc Gelhausen (marc.gelhausen@dlr.de)
Holger Pabst (holger.pabst@dlr.de)

DLR.de/en/lv

DLR (CC BY-NC-ND 3.0)
Pictures: Titel (frank peters), Page 3 (william87) - stock.adobe.com