



GLOBAL AVIATION MONITOR

January 2025

Statistical Report of Global, European and German Air Transport

Contents January 2025

Number of Monthly Departures _____	04
At the Largest Airports in the World _____	04
At the Largest Airports in Europe _____	04
At the Largest Airports in Germany _____	05
By the Largest Airlines in the World _____	05
By the Largest Airlines in Europe from European Airports _____	06
By the Largest Airlines in Germany from German Airports _____	06
Development of Air Transport Supply _____	07
Development of the Global Air Transport Supply _____	07
Changes in the Global Air Transport Supply _____	07
Development of the German Air Transport Supply _____	07
Changes in the German Air Transport Supply _____	07
Imprint _____	08



The DLR Global Aviation Monitor

The Global Aviation Monitor is a statistical report series from the Institute of Air Transport of the German Aerospace Center, which serves as a supplement to various statistics, such as those from the Federal Statistical Office or the German Airports Association (ADV).

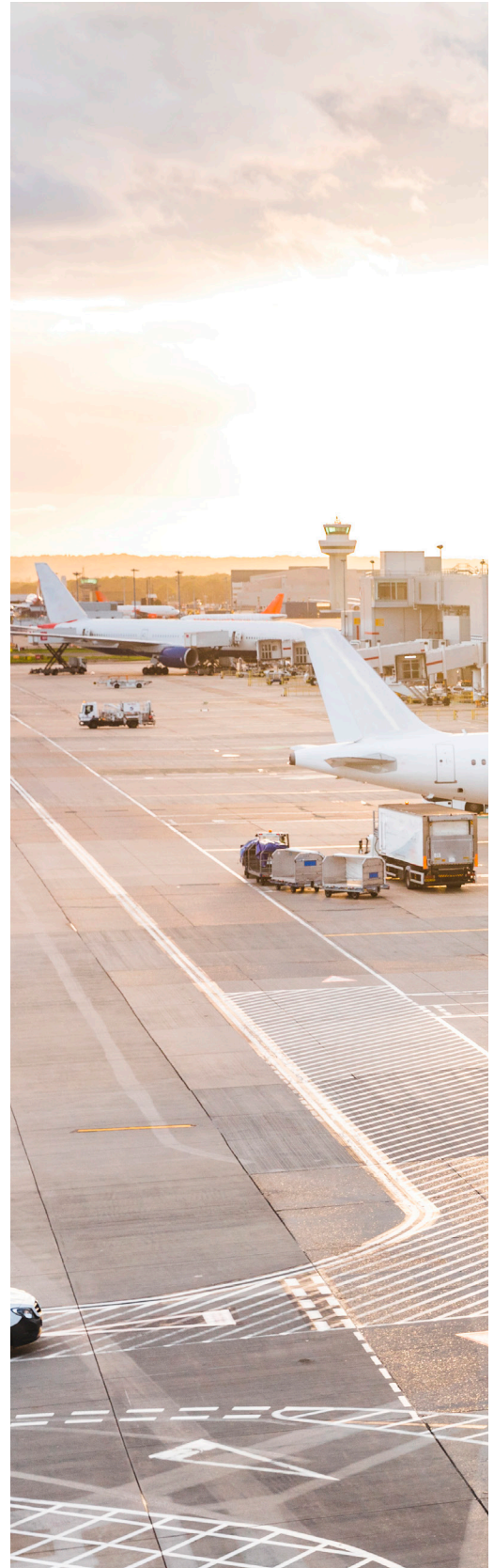
It provides monthly reports on the supply of flights in Germany, Europe, and worldwide. The development of flights over the last fifteen months is presented in the form of a time series. Additionally, there is a monthly ranking of the largest airports and airlines in Germany, Europe, and worldwide, which are compared to the values of the previous year. The data is released during each month and represents the planned data for the current month.

This report fills a gap that is of interest to both airports and airlines in assessing their position on a global scale. It is of interest to policy-makers, administrators, industry stakeholders, and tourism offices to gauge the performance of their region. In the event of significant changes, it is worthwhile to examine closely what has caused them. Due to its monthly updates, the report can serve as a leading indicator for trends and developments.



The report is being developed at the Air Transport Development department of the DLR Institute of Air Transport.

Global air traffic and emissions are expected to grow significantly in the coming decades, necessitating advancements in technology to align with sustainability goals. The Department for Air Transport Development conducts research on forecasting methods to predict air traffic demand and supply, considering global, regional, and local scenarios for various aircraft types. These forecasts assist policymakers, airlines, and airports in planning infrastructure, connectivity, and sustainability measures while evaluating the impact of emissions and noise. By integrating ecological, economic, and social considerations, the department explores the potential of new technologies to improve the sustainability of air transport and guides industry stakeholders in achieving climate-compatible aviation. Their efforts include scenario planning, technical assessments, and the development of roadmaps for sustainable advancements in the aviation sector.



Number of Monthly Departures in January 2025

Ranking by Airports Globally, for Europe & Germany

Departure numbers rise at major airports worldwide

At 24 of the world's 25 largest airports, the number of departures increased in January 2025 compared to the previous year. The four largest airports are in North America, with Atlanta leading the list at approximately 30,500 departures. Ranking 5th and 6th are the Asian airports Guangzhou and Shanghai Pudong, respectively. In 10th and 12th places are the European airports Istanbul and London Heathrow. Frankfurt has dropped to 38th place globally, down from 28th place in January of last year.

This figure shows the twenty-five largest **airports worldwide**, measured in passenger flights.

European passenger flight trends in January 2025

The largest European airports with the highest number of passenger flights in January 2025 are Istanbul, London-Heathrow, Amsterdam, Paris, Madrid, and Frankfurt, each with more than 14,000 scheduled departures. Among these, only Frankfurt shows a downward trend compared to the previous year.

This table shows the twenty-five largest **European airports**, measured in passenger flights.

Tab. 1: Number of monthly departures at the largest airports in the world

Rank	Airport	01/2025	Growth rate
1	Atlanta Hartsfield-Jackson Intl	30,477	2.9
2	Dallas/Fort Worth Intl	29,013	6.2
3	Chicago O'Hare International	28,945	7.8
4	Denver Intl	26,405	0.8
5	Guangzhou	22,285	5.2
6	Shanghai Pudong International	22,202	8.1
7	Charlotte	21,942	5.1
8	Tokyo Haneda	21,007	1.9
9	Los Angeles International	20,635	1.0
10	Istanbul	20,016	5.4
11	Delhi	19,777	6.9
12	London Heathrow	19,502	4.8
13	Dubai	19,032	5.0
14	Beijing Capital	18,361	2.7
15	Shenzhen	17,948	2.5
16	Phoenix Sky Harbor Intl	17,608	2.8
17	Amsterdam	17,577	1.8
18	Miami International	17,548	0.8
19	Jakarta Soekarno-Hatta	17,273	-4.1
20	Houston George Bush	17,269	4.6
21	Las Vegas McCarran International	17,258	2.8
22	Chengdu Tianfu	17,059	2.7
23	Kuala Lumpur International	16,949	20.4
24	New York J F Kennedy International	16,736	0.4
25	Seoul Incheon International	16,560	9.4

Source: DLR

Tab. 2: Number of monthly departures at the largest airports in Europe

Rank	Airport	01/2025	Growth rate
1	Istanbul	20,016	5.4
2	London Heathrow	19,502	4.8
3	Amsterdam	17,577	1.8
4	Paris Charles de Gaulle	16,266	13.3
5	Madrid Barajas	15,650	5.6
6	Frankfurt	14,268	-4.0
7	Rome Fiumicino	11,620	6.3
8	Barcelona	11,520	1.4
9	Istanbul Sabiha Gokcen	10,735	12.0
10	Munich	10,617	2.7
11	Moscow Sheremetyevo International	8,704	11.3
12	Zurich	8,631	7.1
13	Lisbon	8,216	3.3
14	London Gatwick	8,031	4.2
15	Vienna	7,813	5.4
16	Copenhagen	7,728	9.5
17	Dublin	7,719	-2.9
18	Athens Intl Eleftherios Venizelos	7,521	9.0
19	Oslo	7,170	7.7
20	Paris Orly	7,050	6.8
21	Warsaw	6,508	11.9
22	Milan Malpensa	6,324	6.8
23	Manchester International	6,222	7.0
24	Stockholm Arlanda	5,971	-3.3
25	Berlin	5,958	11.2

Source: DLR

Number of Monthly Departures in January 2025

Tab. 3: Number of monthly departures at the largest airports in Germany

Rank	Airport	01/2025	Growth rate
1	Frankfurt	14,268	-4.0
2	Munich	10,617	2.7
3	Berlin	5,958	11.2
4	Dusseldorf	4,477	2.2
5	Hamburg	3,715	8.0
6	Stuttgart	2,175	10.4
7	Cologne/Bonn	1,831	4.1
8	Hanover	1,181	12.2
9	Nuremberg	1,051	20.1
10	Memmingen	745	13.6
11	Dortmund	709	3.4
12	Bremen	643	15.0
13	Hahn	444	13.8
14	Leipzig/Halle	405	0.0
15	Karlsruhe/Baden Baden	353	20.5
16	Weeze	309	2.3
17	Dresden	260	-7.8
18	Munster	156	-16.1
19	Paderborn	66	-27.5
20	Saarbrücken	43	87.0
21	Friedrichshafen	20	-77.8
22	Moenchengladbach	19	35.7
23	Westerland	11	450.0
24	Erfurt	7	-12.5
25	Rostock	5	66.7

Source: DLR

Tab. 4: Number of monthly departures by the largest airlines in the world

Rank	Airline	01/2025	Growth rate
1	American Airlines	178,504	4.6
2	Delta Air Lines	138,462	6.1
3	United Airlines	135,432	8.9
4	Southwest Airlines	107,506	-8.8
5	China Eastern Airlines	78,172	4.9
6	China Southern Airlines	71,873	-1.5
7	IndiGo Air	69,520	16.9
8	Ryanair	69,016	-1.2
9	Air China	52,383	-1.2
10	LATAM Airlines	49,707	5.2
11	Alaska Airlines	34,750	8.8
12	All Nippon Airways	32,625	2.3
13	Turkish Airlines	32,500	-21.1
14	easyJet	31,143	12.2
15	Air Canada	31,107	-0.4
16	Azul	27,953	2.5
17	Lufthansa German Airlines	26,882	-10.2
18	Japan Airlines International	26,705	1.0
19	Hainan Airlines	24,573	8.4
20	British Airways	24,473	4.2
21	JetBlue Airways Corporation	24,287	-8.2
22	Shenzhen Airlines	23,774	1.2
23	AVIANCA	23,723	7.1
24	Air France	22,423	12.0
25	Air India	22,220	67.7

Source: DLR

Mixed growth trends for German airports

With the exception of Germany's largest airport, Frankfurt, nearly all major airports recorded positive growth rates in January 2025. Airports where low-cost carriers are particularly active, such as Hahn and Memmingen, experienced especially high growth rates. However, very small airports like Friedrichshafen saw a significant decline in departures. Conversely, there are now flights operated by very small aircraft from Moenchengladbach.

Here, the twenty-five largest **German airports** are listed, measured in passenger flights.

Ranking by Airlines Globally, for Europe & Germany

Global airline trends: growth and declines

Most major airlines worldwide increased their scheduled departures in January 2025. However, some low-cost carriers, like Southwest, Ryanair, and JetBlue, saw declines. American Airlines led with around 178,500 departures, while Lufthansa ranked 17th with about 26,900, showing a downward trend. Turkish Airlines experienced a sharp decline, partly due to shifting flights to its new subsidiary, Ajet. Air India merged with Vistara. Comparisons to the previous year should account for factors like vacations and public holidays, which can influence flight availability.

This figure shows the **world's** twenty-five **largest airlines**, measured in passenger flights.

Number of Monthly Departures in January 2025

Ranking by Airlines Globally, for Europe & Germany

Ryanair leads European departures despite slight decline in January 2025

Ryanair offered the most departures in Europe in January 2025, with nearly 66,800, reflecting a 1.2% decline compared to last year. This was due to delayed aircraft deliveries from Boeing. Wizz also saw a decline, partly because of a shift of flights to its subsidiary, Wizz Malta.

The twenty-five airlines in Europe with the most passenger flights are listed here.

Tab. 5: Number of monthly departures by the largest airlines in Europe from European airports

Rank	Airline	01/2025	Growth rate
1	Ryanair	66,837	-1.7
2	easyJet	29,890	11.1
3	Turkish Airlines	26,797	-24.8
4	Lufthansa German Airlines	24,814	-10.1
5	British Airways	21,288	4.4
6	Air France	19,081	13.3
7	KLM-Royal Dutch Airlines	18,918	1.1
8	Iberia	16,917	3.1
9	Aeroflot Russian Airlines	16,355	10.4
10	Pegasus Airlines	16,301	15.6
11	SAS Scandinavian Airlines	15,239	9.8
12	Vueling Airlines	14,865	0.4
13	Wizz Air Malta	10,968	2.4
14	Wizz Air	10,683	-2.7
15	Ajet	10,480	----
16	Wideroe's Flyveselskap	10,024	1.3
17	ITA Airways	9,988	-2.0
18	Swiss	9,766	3.7
19	Finnair	9,326	11.1
20	TAP Air Portugal	8,186	1.7
21	LOT - Polish Airlines	7,950	9.2
22	Austrian Airlines AG	7,434	7.9
23	Eurowings	7,349	7.1
24	Aer Lingus	7,116	1.9
25	Aegean Airlines	6,982	5.5

Source: DLR

Tab. 6: Number of monthly departures by the largest airlines in Germany from German airports

Rank	Airline	01/2025	Growth rate
1	Lufthansa German Airlines	16,583	-10.1
2	Eurowings	4,413	9.3
3	Ryanair	3,339	3.3
4	Air Dolomiti	1,677	26.6
5	KLM-Royal Dutch Airlines	1,374	4.0
6	Condor Flugdienst	1,146	27.3
7	Austrian Airlines AG	1,101	17.8
8	British Airways	1,087	-4.1
9	Turkish Airlines	987	-22.8
10	SunExpress	949	4.4
11	Pegasus Airlines	903	14.4
12	easyJet	881	31.9
13	Air France	871	23.0
14	Swiss	818	-5.9
15	Wizz Air	745	-12.2
16	Wizz Air Malta	724	30.2
17	Lufthansa City Airlines	667	----
18	Eurowings Discover	613	31.8
19	TUfly	509	1.8
20	SAS Scandinavian Airlines	463	8.9
21	LOT - Polish Airlines	428	6.5
22	Iberia	418	-1.9
23	Aegean Airlines	392	5.1
24	United Airlines	374	-6.7
25	Ajet	367	----

Source: DLR

Lufthansa leads German departures in January 2025

Lufthansa is the airline with the largest number of departures in Germany, offering around 16,600, followed by Eurowings with over 4,400 and Ryanair with about 3,300. Lufthansa saw a decline, partly offset by its new subsidiary, Lufthansa City Airlines.

This table ranks the twenty-five airlines that offer the most passenger flights in Germany.

Air Transport Development in January 2025

Development and Changes Globally and for Germany

Global and German air traffic trends in January 2025

The following diagrams show the development of global and German flight capacity over the last fifteen months, both worldwide and in the individual region.

Fig. 1-2: Global passenger flights grow by 4.5% in January 2025

In January 2025, the number of scheduled passenger departures worldwide grew by about 4.5% compared to the previous year, reaching 3.1 million. The regions with the highest volumes are Asia, North America, and Europe, with Asia and the Middle East showing the strongest growth at around 6%.

Fig. 3-4: German passenger flights grow by 3% in January 2025

In January 2025, around 49,500 scheduled departures in Germany's passenger air traffic are expected, reflecting a 3.0% growth compared to last year. Approximately 42,400 of these flights are to European airports.

Fig. 1: Development of the global air transport supply.

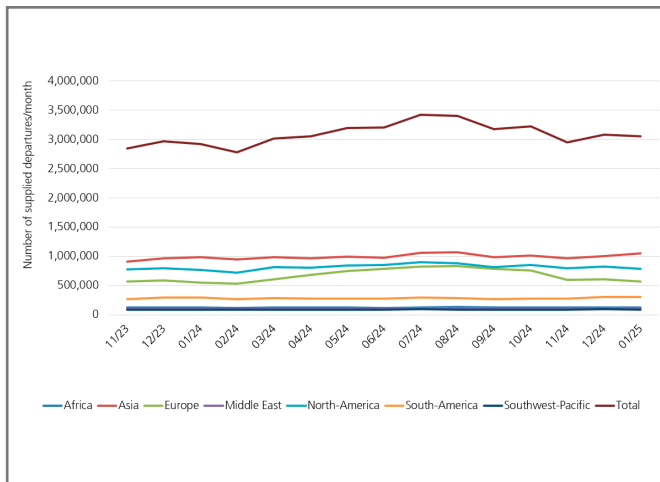


Fig. 2: Changes in the global air transport supply

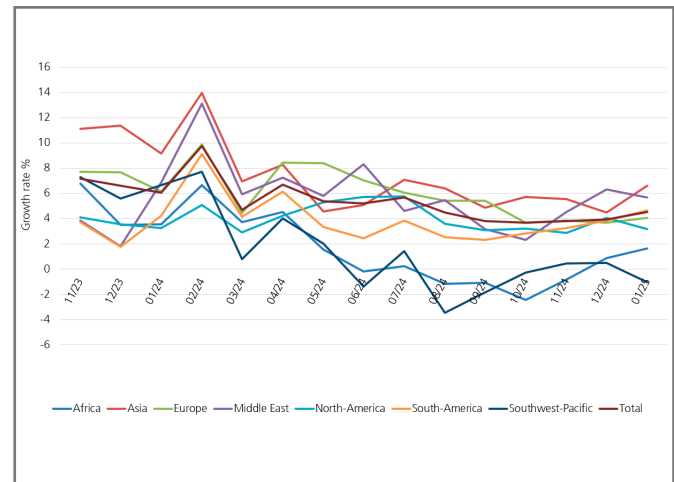


Fig. 3: Development of the German air transport supply.

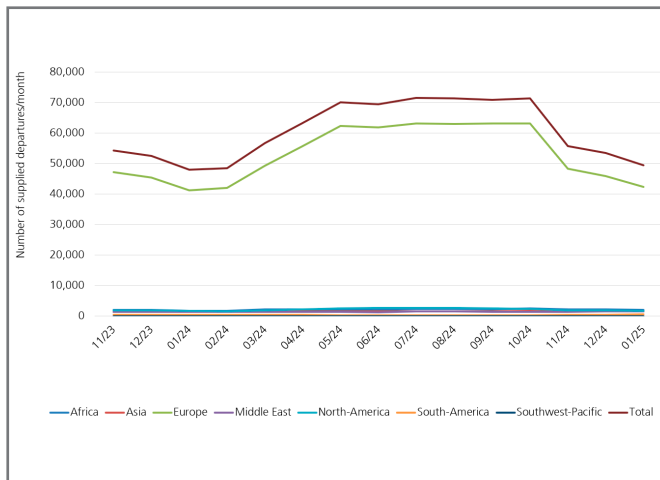
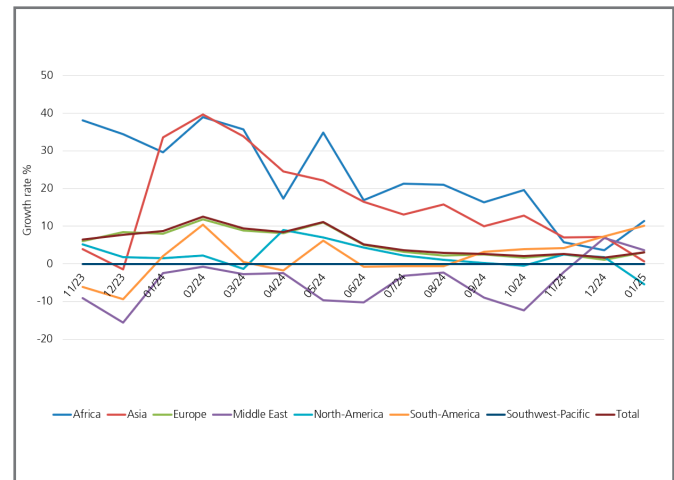


Fig. 4: Changes in the German air transport supply



Source: OAG 2023-2025, DLR 2023-2025

DLR Overview

The DLR is the research center of the Federal Republic of Germany for aerospace. We conduct research and development in aviation, space, energy, transportation, security, and digitalisation. The German Space Agency at DLR is responsible, on behalf of the Federal Government, for planning and implementing German space activities. Two DLR project agencies manage funding programmes and support knowledge transfer.

Climate, mobility, and technology are changing globally. The DLR utilises the expertise of its 54 institutes and facilities to develop solutions for these challenges. Our more than 10,000 employees have a common mission: we explore Earth and space and develop technologies for a sustainable future. In doing so, we contribute to strengthening Germany's knowledge and economic base.

DLR Institute of Air Transport

The DLR Institute of Air Transport researches the complex interactions within the air transport system. We develop future scenarios, conduct economic and business analyses, and model and simulate flight and fleet operations.

We forecast, shape, and evaluate air transport as part of the overall transport system to enhance climate compatibility and performance. To achieve this, we integrate ecological, economic, technological, and social aspects of air transport.

Within DLR, we consolidate expertise in analysing air transport markets and assessing the entire value chain. This positions us as a competent partner for industry, society, and policy makers.

Imprint

Publisher:
German Aerospace Center (DLR)
Institute of Air Transport

Address:
Linder Höhe, 51147 Cologne
Phone: +49 2203 601-4554
Email: luftverkehrsprognose@dlr.de

Editorial Team:
Dr. Peter Berster (peter.berster@dlr.de)
Dr. Marc Gelhausen (marc.gelhausen@dlr.de)
Holger Pabst (holger.pabst@dlr.de)

DLR.de/en/lv

DLR (CC BY-NC-ND 3.0)
Pictures: Titel (frank peters), Page 3 (william87) - stock.adobe.com