



# GLOBAL AVIATION MONITOR

## December 2024

---

Statistical Report of Global, European and German Air Transport

# Contents December 2024

Number of Monthly Departures _____	04
At the Largest Airports in the World _____	04
At the Largest Airports in Europe _____	04
At the Largest Airports in Germany _____	05
By the Largest Airlines in the World _____	05
By the Largest Airlines in Europe from European Airports _____	06
By the Largest Airlines in Germany from German Airports _____	06
Development of Air Transport Supply _____	07
Development of the Global Air Transport Supply _____	07
Changes in the Global Air Transport Supply _____	07
Development of the German Air Transport Supply _____	07
Changes in the German Air Transport Supply _____	07
Imprint _____	08



# The DLR Global Aviation Monitor

The Global Aviation Monitor is a statistical report series from the Institute of Air Transport of the German Aerospace Center, which serves as a supplement to various statistics, such as those from the Federal Statistical Office or the German Airports Association (ADV).

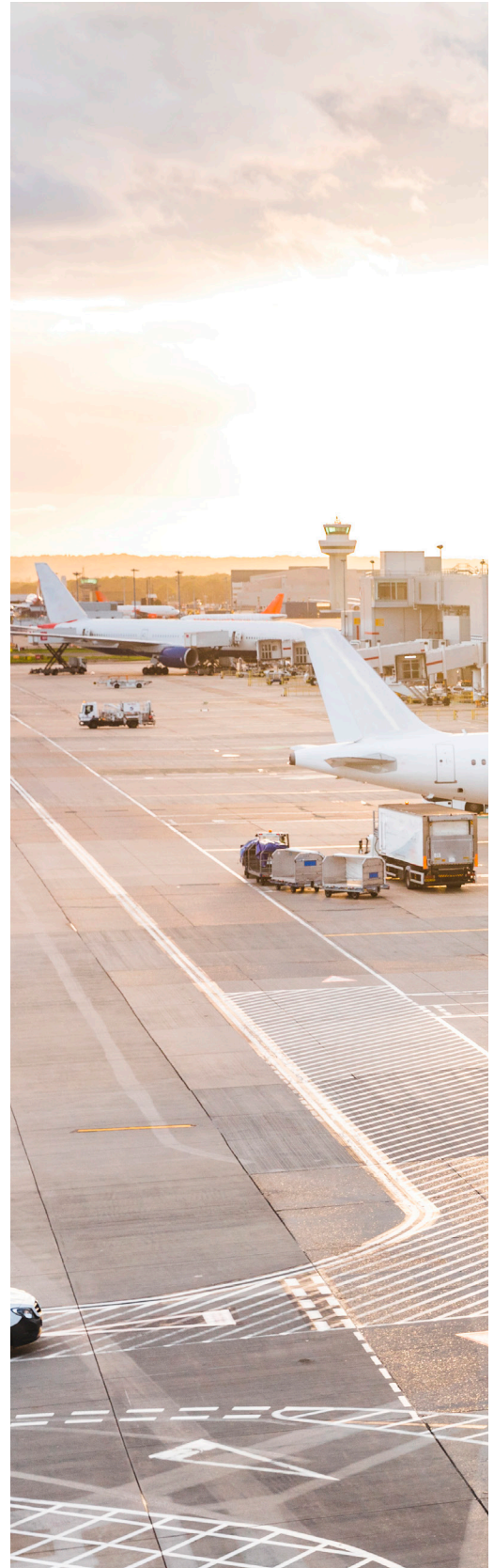
It provides monthly reports on the supply of flights in Germany, Europe, and worldwide. The development of flights over the last fifteen months is presented in the form of a time series. Additionally, there is a monthly ranking of the largest airports and airlines in Germany, Europe, and worldwide, which are compared to the values of the previous year. The data is released during each month and represents the planned data for the current month.

This report fills a gap that is of interest to both airports and airlines in assessing their position on a global scale. It is of interest to policy-makers, administrators, industry stakeholders, and tourism offices to gauge the performance of their region. In the event of significant changes, it is worthwhile to examine closely what has caused them. Due to its monthly updates, the report can serve as a leading indicator for trends and developments.



**The report is being developed at the Air Transport Development department of the DLR Institute of Air Transport.**

Global air traffic and emissions are expected to grow significantly in the coming decades, necessitating advancements in technology to align with sustainability goals. The Department for Air Transport Development conducts research on forecasting methods to predict air traffic demand and supply, considering global, regional, and local scenarios for various aircraft types. These forecasts assist policymakers, airlines, and airports in planning infrastructure, connectivity, and sustainability measures while evaluating the impact of emissions and noise. By integrating ecological, economic, and social considerations, the department explores the potential of new technologies to improve the sustainability of air transport and guides industry stakeholders in achieving climate-compatible aviation. Their efforts include scenario planning, technical assessments, and the development of roadmaps for sustainable advancements in the aviation sector.



# Number of Monthly Departures in December 2024

## Ranking by Airports Globally, for Europe & Germany

### Departures rise at 20 of the 25 largest airports

At 20 of the world's 25 largest airports, the number of departures increases in December 2024 compared to December last year. The six largest airports are in North America, with the largest being Atlanta, which handles approximately 32,700 departures. In 7th place is the Asian airport Guangzhou, while the European airports Istanbul and London Heathrow are in 10th and 11th places, respectively. Frankfurt drops to 35th place globally, compared to 26th place in December last year.

This figure shows the twenty-five largest **airports worldwide**, measured in passenger flights.

### Largest European airports with over 15,000 passenger flights in December 2024

The largest European airports with the highest number of passenger flights in December 2024 are Istanbul, London Heathrow, Amsterdam, Paris, Madrid, and Frankfurt, each with more than 15,000 scheduled departures.

This table shows the twenty-five largest **European airports**, measured in passenger flights.

Tab. 1: Number of monthly departures at the largest airports in the world

Rank	Airport	12/2024	Growth rate
1	Atlanta Hartsfield-Jackson Intl	32,680	4.3
2	Chicago O'Hare International	30,310	9.6
3	Dallas/Fort Worth Intl	29,845	8.5
4	Denver Intl	27,679	-0.4
5	Charlotte	22,888	10.4
6	Los Angeles International	22,003	2.9
7	Guangzhou	21,346	13.0
8	Tokyo Haneda	20,848	0.6
9	Shanghai Pudong International	20,544	3.7
10	Istanbul	19,759	3.2
11	London Heathrow	19,717	3.1
12	Delhi	19,343	3.8
13	Phoenix Sky Harbor Intl	19,061	7.4
14	Dubai	18,940	5.8
15	Beijing Capital	18,368	3.5
16	Amsterdam	18,352	0.3
17	New York J F Kennedy	17,967	-1.5
18	Houston George Bush	17,898	6.2
19	Las Vegas McCarran International	17,692	-0.8
20	Shenzhen	17,656	2.2
21	Paris Charles de Gaulle	17,551	3.4
22	Miami International	17,138	2.3
23	Jakarta Soekarno-Hatta	16,826	-5.9
24	Orlando International	16,765	-7.0
25	Madrid Barajas	16,412	6.8

Source: DLR

Tab. 2: Number of monthly departures at the largest airports in Europe

Rank	Airport	12/2024	Growth rate
1	Istanbul	19,759	3.2
2	London Heathrow	19,717	3.1
3	Amsterdam	18,352	0.3
4	Paris Charles de Gaulle	17,551	3.4
5	Madrid Barajas	16,412	6.8
6	Frankfurt	15,313	-3.4
7	Barcelona	12,743	2.5
8	Rome Fiumicino	12,312	5.9
9	Munich	11,322	-1.2
10	Istanbul Sabiha Gokcen	10,547	10.6
11	London Gatwick	9,967	2.5
12	Zurich	9,119	6.3
13	Lisbon	8,774	0.1
14	Vienna	8,720	7.9
15	Moscow Sheremetyevo	8,571	11.1
16	Athens Intl Eleftherios Venizelos	8,305	11.7
17	Copenhagen	8,068	3.3
18	Dublin	7,964	-4.8
19	Paris Orly	7,735	-3.8
20	Milan Malpensa	7,366	9.4
21	Oslo	7,345	8.7
22	Manchester International	6,940	9.6
23	Berlin	6,809	8.1
24	London Stansted	6,773	4.9
25	Warsaw	6,587	12.7

Source: DLR



# Number of Monthly Departures in December 2024

Tab. 3: Number of monthly departures at the largest airports in Germany

Rank	Airport	12/2024	Growth rate
1	Frankfurt	15,313	-3.4
2	Munich	11,322	-1.2
3	Berlin	6,809	8.1
4	Dusseldorf	4,784	2.6
5	Hamburg	3,932	5.2
6	Stuttgart	2,338	3.3
7	Cologne/Bonn	2,123	5.6
8	Hanover	1,237	4.9
9	Nuremberg	1,119	26.7
10	Memmingen	792	16.5
11	Dortmund	693	6.6
12	Bremen	659	14.0
13	Hahn	465	12.3
14	Leipzig/Halle	433	-1.4
15	Karlsruhe/Baden Baden	405	28.2
16	Weeze	333	0.6
17	Dresden	269	-13.8
18	Munster	166	-19.8
19	Paderborn	74	-17.8
20	Saarbrücken	49	0.0
21	Mönchengladbach	21	----
22	Friedrichshafen	17	-81.5
23	Westerland	14	250.0
24	Erfurt	13	0.0
25	Rostock	9	0.0

Source: DLR

Most major German airports see growth, small airports face mixed trends

With the exception of Germany's largest airports, Frankfurt and Munich, almost all major airports record positive growth rates in December 2024. Airports such as Hahn and Memmingen, which are primarily served by low-cost carriers, show particularly high growth rates. Very small airports, such as Friedrichshafen, experience a significant decline in departures. Conversely, there are now flights using very small aircraft from Mönchengladbach.

Here, the twenty-five largest **German airports** are listed, measured in passenger flights.

## Ranking by Airlines Globally, for Europe & Germany

Tab. 4: Number of monthly departures by the largest airlines in the world

Rank	Airline	12/2024	Growth rate
1	American Airlines	182,399	8.8
2	Delta Air Lines	144,259	6.7
3	United Airlines	139,746	11.0
4	Southwest Airlines	118,818	-8.9
5	Ryanair	74,755	5.5
6	China Eastern Airlines	68,626	-1.8
7	IndiGo Air	68,196	10.0
8	China Southern Airlines	67,282	-3.1
9	Air China	51,364	-0.3
10	LATAM Airlines	48,119	4.7
11	easyJet	43,517	3.1
12	Alaska Airlines	36,773	9.1
13	All Nippon Airways	32,415	1.3
14	Turkish Airlines	31,925	-23.3
15	Air Canada	30,742	-1.5
16	Lufthansa German Airlines	29,386	-11.8
17	JetBlue Airways Corporation	28,321	-2.7
18	Azul	27,487	5.1
19	Japan Airlines International	26,743	1.3
20	British Airways	24,862	4.2
21	AVIANCA	23,875	10.4
22	Hainan Airlines	23,585	20.6
23	Shenzhen Airlines	23,380	6.2
24	Air France	23,257	2.3
25	Air India	22,484	69.4

Source: DLR

Airlines worldwide increase flights in December 2024, with exceptions

Most major airlines increase their scheduled passenger flights in December 2024, with the exception of Southwest Airlines, the world's largest low-cost carrier, and some Chinese airlines, which show a decline. American Airlines offers the most flights, with around 182,400 departures, while Lufthansa ranks 16th with about 29,400. Turkish Airlines sees a sharp decline, partly due to a shift of flights to its new subsidiary Ajet. Air India has merged with Vistara. When comparing to the previous year, factors like holidays can influence flight numbers.

This figure shows the **world's** twenty-five largest airlines, measured in passenger flights.

# Number of Monthly Departures in December 2024

## Ranking by Airlines Globally, for Europe & Germany

### Ryanair leads Europe in flights in December 2024

Ryanair offers the largest number of flights in Europe in December 2024, with almost 72,600 departures, marking a growth of around 5.3% compared to last year. It is followed by easyJet with approximately 42,000 departures. A decline is observed at Wizz Air, partly due to a shift of flights to its subsidiary, Wizz Malta.

The twenty-five airlines in Europe with the most passenger flights are listed here.

Tab. 5: Number of monthly departures by the largest airlines in Europe from European airports

Rank	Airline	12/2024	Growth rate
1	Ryanair	72,605	5.3
2	easyJet	41,877	2.2
3	Lufthansa German Airlines	27,188	-12.5
4	Turkish Airlines	26,486	-26.8
5	British Airways	21,615	4.5
6	Air France	19,740	2.4
7	KLM-Royal Dutch Airlines	19,599	-1.0
8	Iberia	17,281	4.0
9	Vueling Airlines	16,954	2.2
10	Aeroflot Russian Airlines	16,290	12.3
11	Pegasus Airlines	15,987	15.1
12	SAS Scandinavian Airlines	14,084	1.1
13	Wizz Air Malta	11,281	1.1
14	Wizz Air	10,975	-5.5
15	Ajet	10,480	----
16	Swiss	10,286	3.4
17	ITA Airways	9,681	-5.1
18	Wideroe's Flyveselskap	9,436	5.1
19	Finnair	8,729	4.0
20	Eurowings	8,599	7.6
21	Austrian Airlines AG	8,530	7.1
22	LOT - Polish Airlines	8,112	11.0
23	TAP Air Portugal	8,086	-3.1
24	Aegean Airlines	7,597	6.9
25	Aer Lingus	7,506	-0.2

Source: DLR

### Germany: Lufthansa maintains lead, Eurowings Discover increases capacity

Lufthansa operates the largest number of flights in Germany, with around 18,000 departures, followed by Eurowings with more than 5,000 departures and Ryanair with approximately 3,700 departures. Eurowings Discover has increased its flight capacity, rising from around 479 scheduled departures last year to 641 this year. A decline is observed at Lufthansa, partly offset by the new subsidiary, Lufthansa City Airlines.

This table ranks the twenty-five airlines that offer the most passenger flights in Germany.

Tab. 6: Number of monthly departures by the largest airlines in Germany from German airports

Rank	Airline	12/2024	Growth rate
1	Lufthansa German Airlines	17,909	-12.2
2	Eurowings	5,015	9.5
3	Ryanair	3,736	11.7
4	Air Dolomiti	1,847	43.0
5	KLM-Royal Dutch Airlines	1,402	0.4
6	easyJet	1,358	4.2
7	Austrian Airlines AG	1,193	8.6
8	Condor Flugdienst	1,177	25.6
9	British Airways	1,141	-3.6
10	SunExpress	1,059	4.5
11	Turkish Airlines	985	-23.6
12	Pegasus Airlines	931	20.8
13	Air France	899	5.1
14	Swiss	817	-6.0
15	Wizz Air	761	-14.1
16	Wizz Air Malta	708	18.6
17	Eurowings Discover	641	33.8
18	Lufthansa City Airlines	593	----
19	TUIfly	557	1.6
20	United Airlines	489	0.2
21	LOT - Polish Airlines	453	14.7
22	SAS Scandinavian Airlines	450	11.4
23	Iberia	439	0.5
24	Aegean Airlines	416	3.7
25	Ajet	364	----

Source: DLR

# Air Transport Development in December 2024

## Development and Changes Globally and for Germany

### Global and German air traffic trends in December 2024

The following diagrams show the development of global and German flight capacity over the last fifteen months, both worldwide and in the individual region.

Fig. 1-2: **Scheduled passenger flights worldwide increase by 3.9% in December 2024**

In December 2024, the number of scheduled passenger flights worldwide grows by around 3.9% compared to the previous year, reaching 3.1 million departures. The regions with the highest volumes are Asia, North America, and Europe, while the Middle East shows the strongest growth, with an increase of around 6.3%.

Fig. 3-4: **Germany's scheduled flights grow by 1.6% in December 2024, with 46,000 to Europe**

In Germany, around 53,400 scheduled departures in passenger air traffic are expected in December 2024, reflecting a growth of 1.6% compared to last year. Approximately 46,000 of these flights will be to European airports.

Fig. 1: **Development** of the **global air transport supply**.

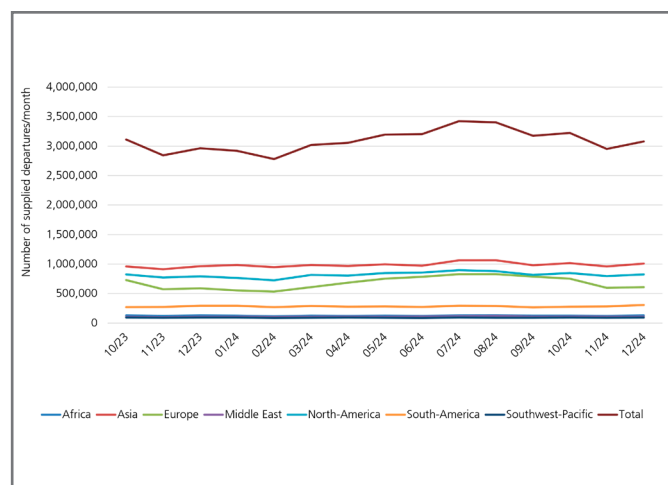


Fig. 2: **Changes** in the global air transport supply

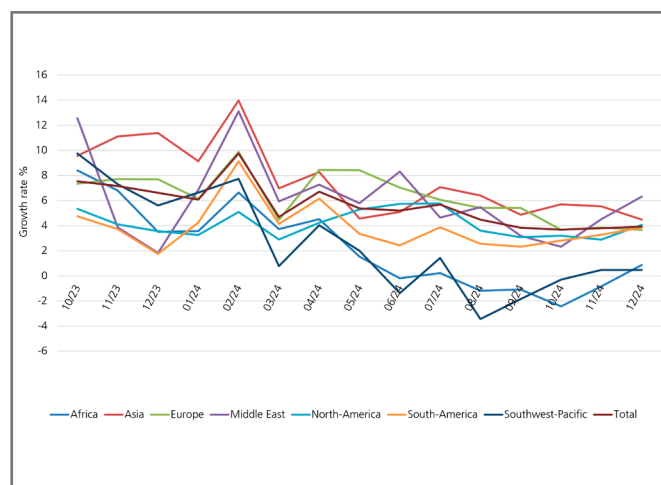


Fig. 3: **Development** of the **German air transport supply**.

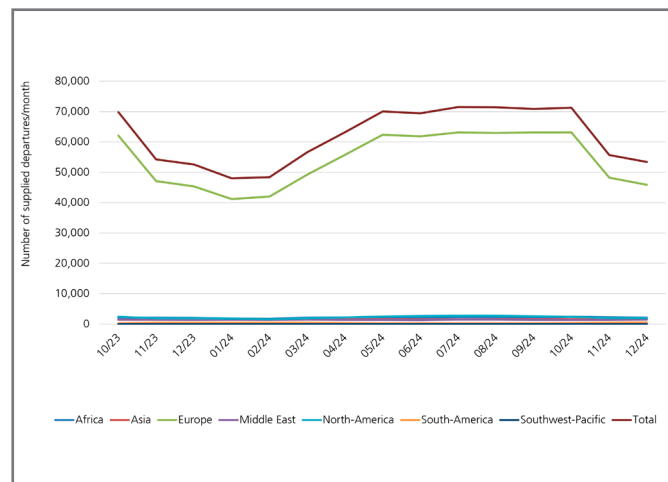
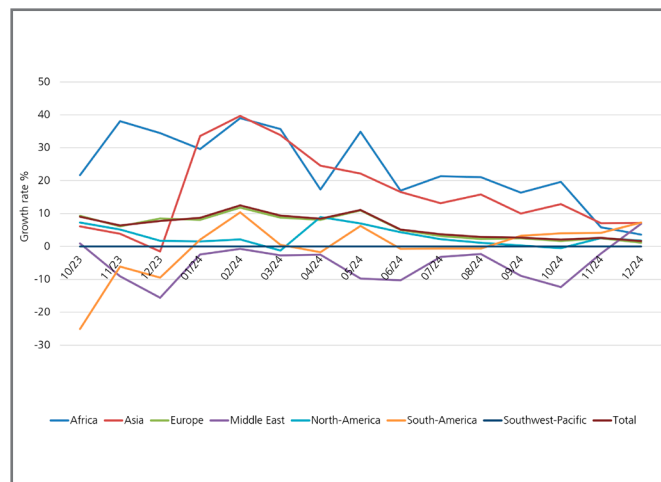


Fig. 4: **Changes** in the German air transport supply



Source: OAG 2023/2024, DLR 2023/2024

## DLR Overview

The DLR is the research center of the Federal Republic of Germany for aerospace. We conduct research and development in aviation, space, energy, transportation, security, and digitalisation. The German Space Agency at DLR is responsible, on behalf of the Federal Government, for planning and implementing German space activities. Two DLR project agencies manage funding programmes and support knowledge transfer.

Climate, mobility, and technology are changing globally. The DLR utilises the expertise of its 54 institutes and facilities to develop solutions for these challenges. Our more than 10,000 employees have a common mission: we explore Earth and space and develop technologies for a sustainable future. In doing so, we contribute to strengthening Germany's knowledge and economic base.

## DLR Institute of Air Transport

The DLR Institute of Air Transport researches the complex interactions within the air transport system. We develop future scenarios, conduct economic and business analyses, and model and simulate flight and fleet operations.

We forecast, shape, and evaluate air transport as part of the overall transport system to enhance climate compatibility and performance. To achieve this, we integrate ecological, economic, technological, and social aspects of air transport.

Within DLR, we consolidate expertise in analysing air transport markets and assessing the entire value chain. This positions us as a competent partner for industry, society, and policy makers.

## Imprint

Publisher:  
German Aerospace Center (DLR)  
Institute of Air Transport

Address:  
Linder Höhe, 51147 Cologne  
Phone: +49 2203 601-4554  
Email: luftverkehrsprognose@dlr.de

Editorial Team:  
Dr. Peter Berster (peter.berster@dlr.de)  
Dr. Marc Gelhausen (marc.gelhausen@dlr.de)  
Holger Pabst (holger.pabst@dlr.de)

## DLR.de/en/lv

DLR (CC BY-NC-ND 3.0)  
Pictures: Titel (frank peters), Page 3 (william87) - stock.adobe.com