

EC-KLIM – Coordination of German EarthCARE Validation



Sabrina Zechlau^{1,2}, Silke Groß², Ulla Wandinger³, Holger Baars³

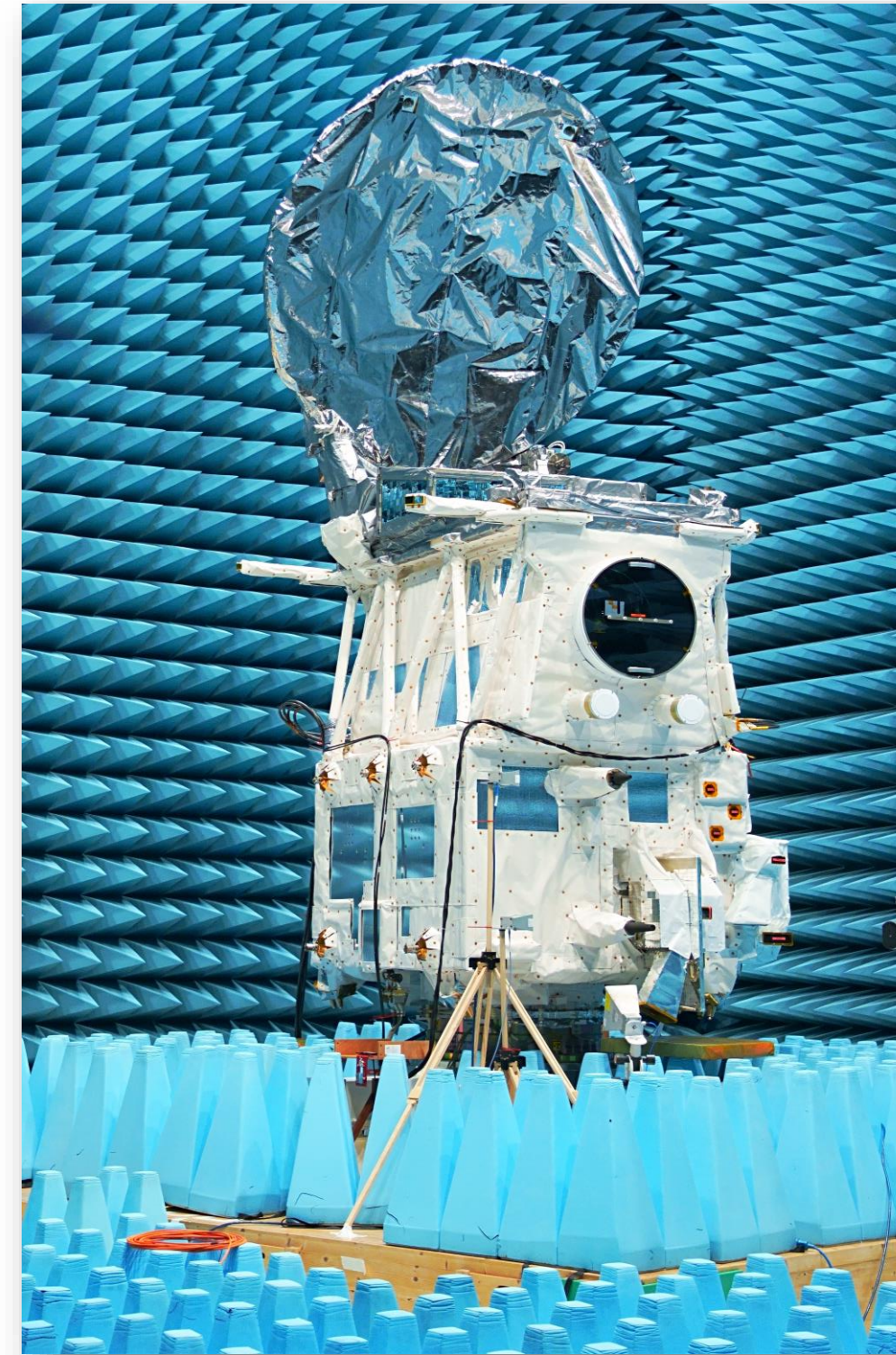
¹Meteorological Institute, Ludwig-Maximilians-Universität München, Munich, Germany

²German Aerospace Center DLR, Oberpfaffenhofen, Germany

³Leibniz Institute for Tropospheric Research, Leipzig, Germany

The German EC-KLIM Project

- The EarthCARE project office is part of the EC-KLIM project at LMU and is funded by German Aerospace Agency
- Aims:
 - Supporting German user community for using EarthCARE data products
 - Coordination and contact for scientific preparation
 - The work is closely connected to the ESA/JAXA EarthCARE Mission and international climate science programs
 - Work in collaboration with DLR German Space Agency
- Tasks:
 - Gap-Analysis (Identifying potential gaps in user requirements (incl. synergistic data products and mission products))
 - User concept (written for users to provide guidance for optimal use EarthCARE data)
 - Presentation of EarthCARE related topics and validation activities

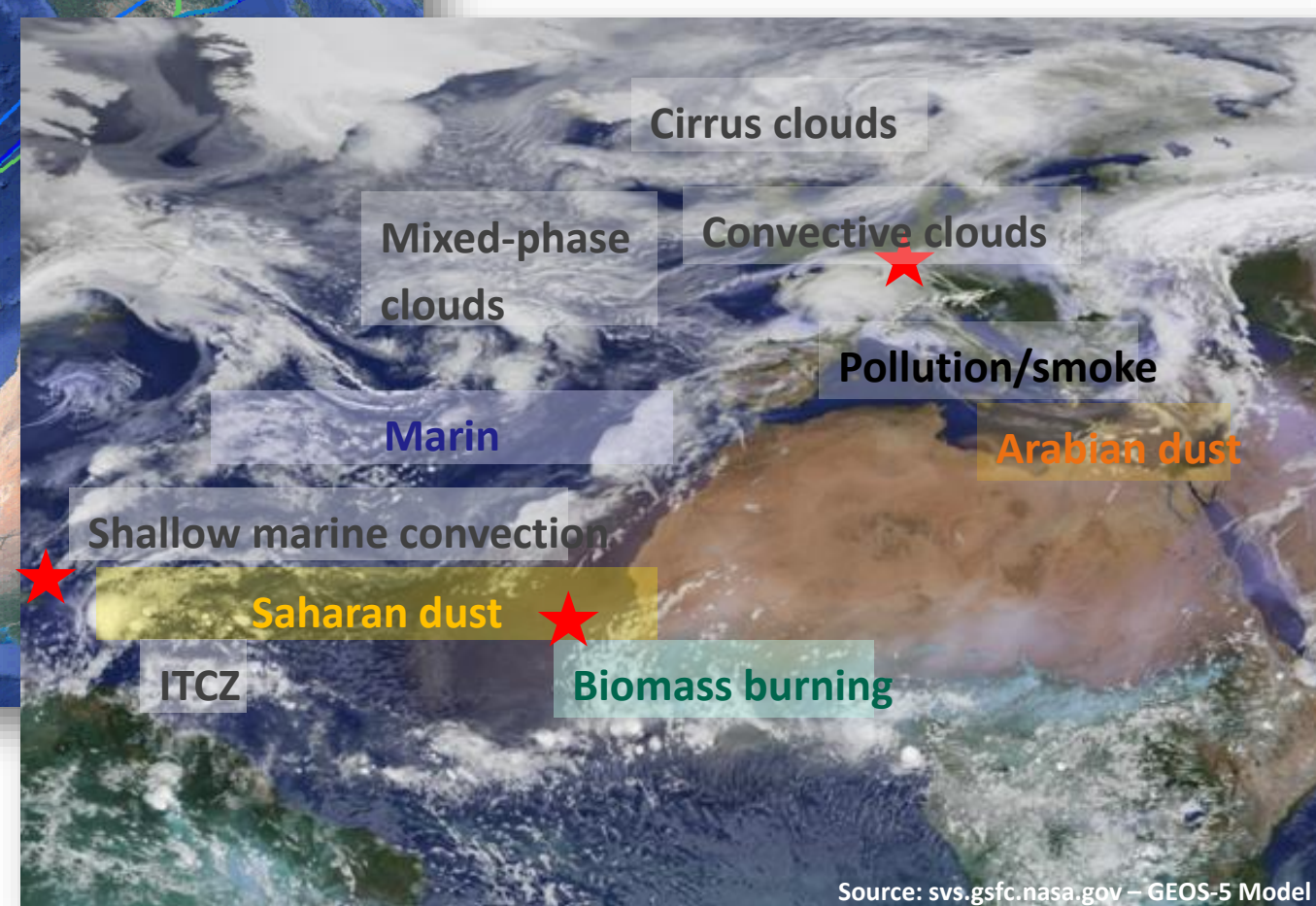
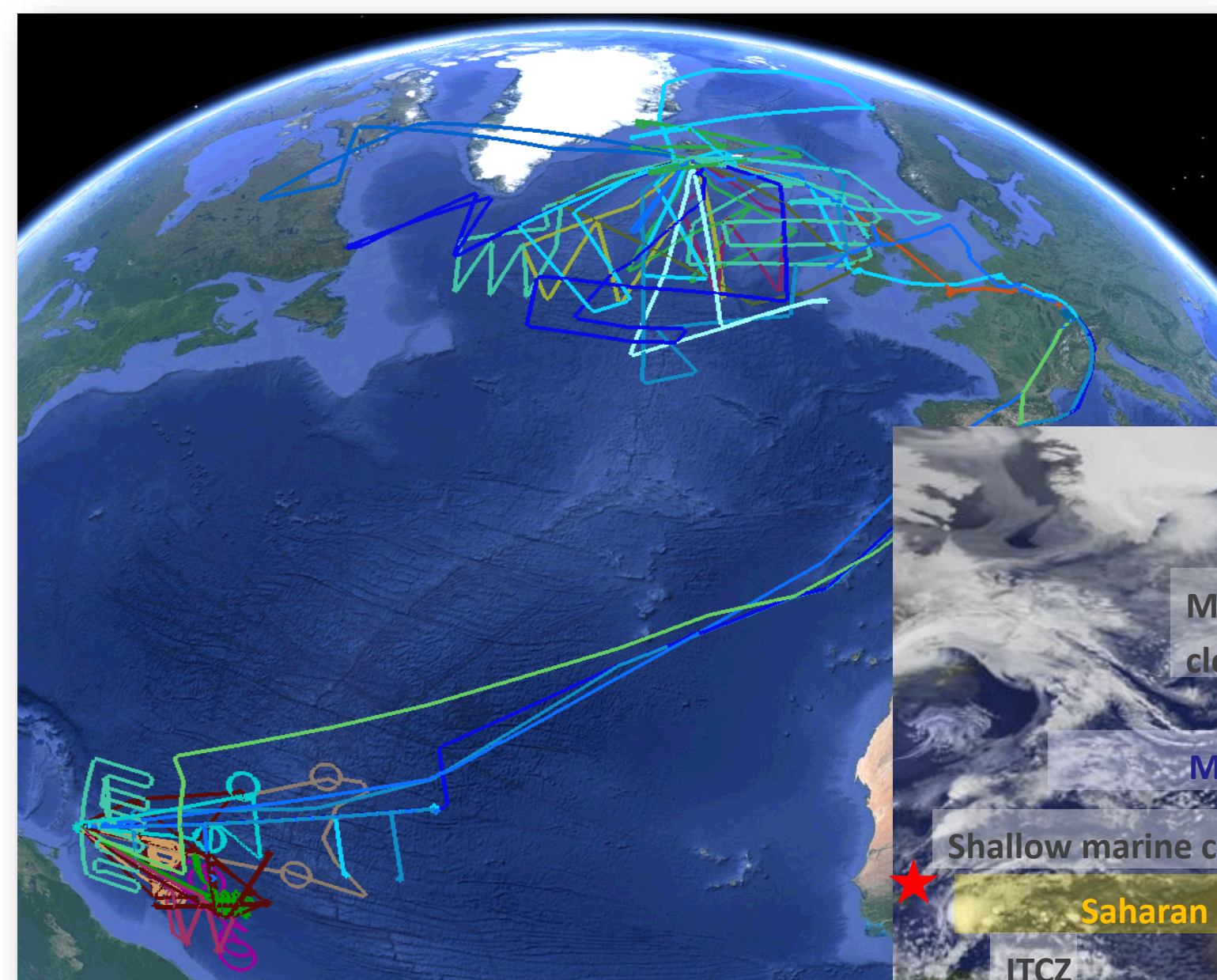
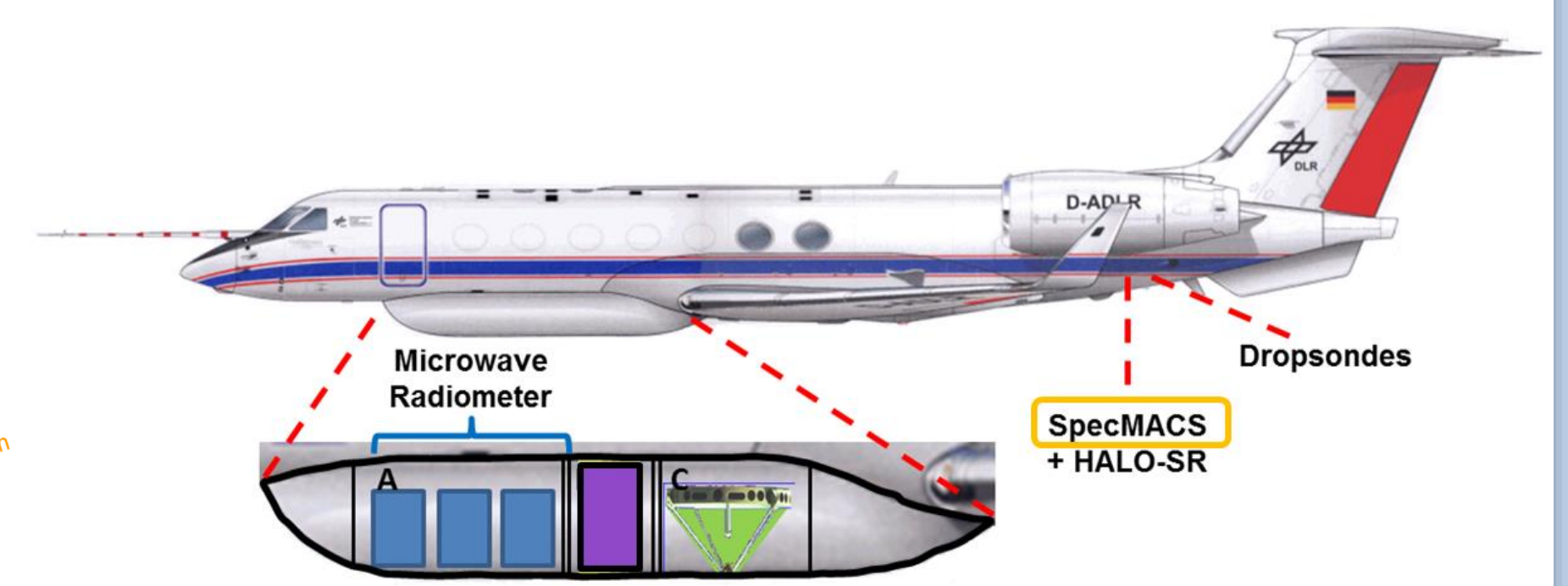
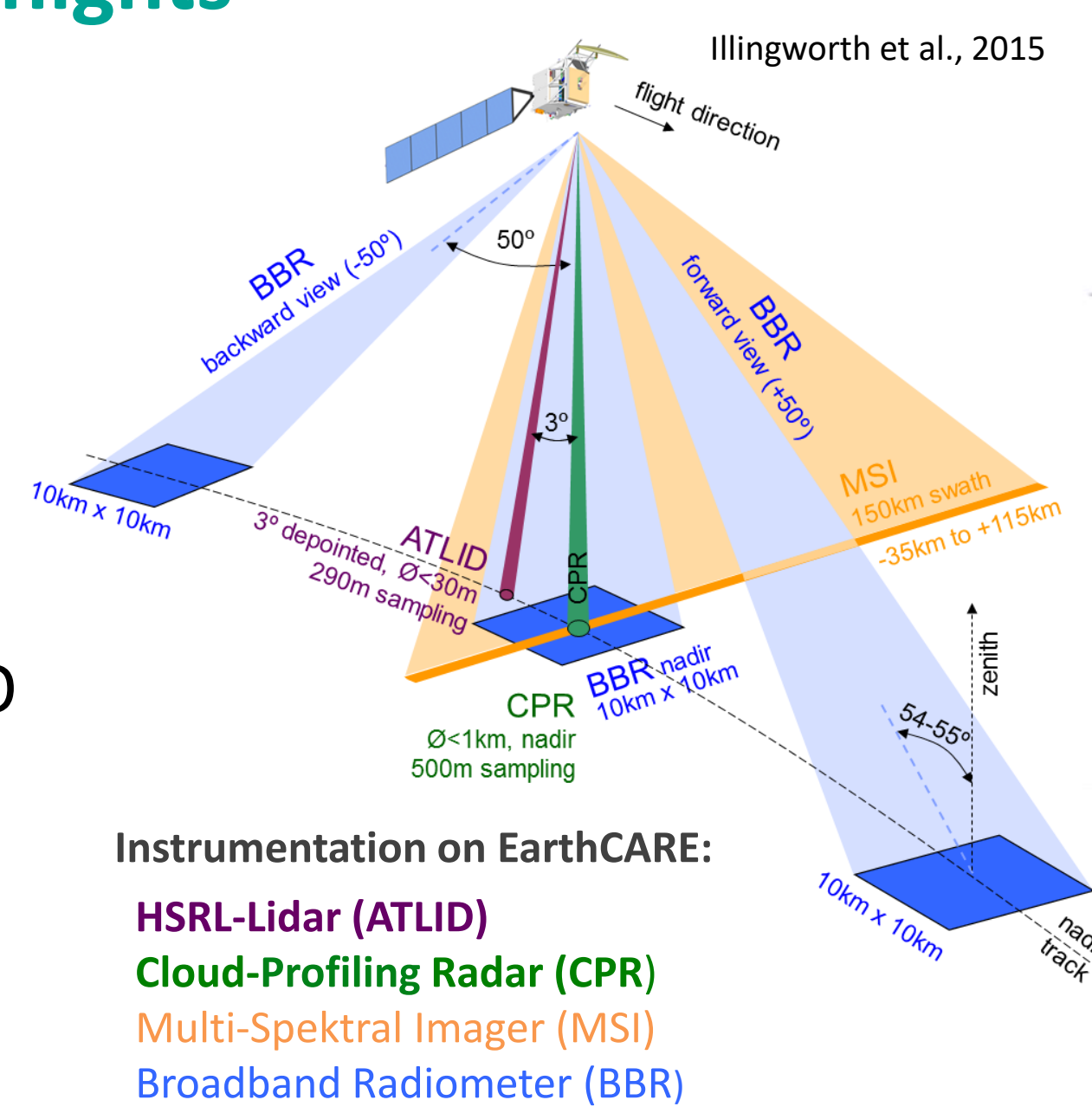


<https://earthcare-mission.de/>

Visit our website or scan the QR-code.

Airborne Validation – 10-year experience of A-Train underflights

- The challenge:** a seamless transition of Cal/Val between A-Train and EarthCARE
 - Influence of different resolution?
 - Influence of different wavelength?
 - Is the radiative closure working?
- Deploying an EarthCARE-like payload on German research aircraft HALO
- Validation with independent airborne observations



The airborne platform: HALO (High Altitude and LOng range) aircraft

- remote sensing payload, a unique asset
- G550, max. alt 16 km / max. range: 8000 km
- since 2012 in operation by DLR

Airborne campaigns with HALO (figure left):

- Tropical North Atlantic:
 - NARVAL-I: 10 – 20 Dec 2013 (dry season)
 - NARVAL-II: 8 – 29 Aug 2016 (wet season)
- Extra-tropical North Atlantic:
 - NARVAL-I: 7 – 22 Jan 2014
 - NAWDEX: 15 Sep – 18 Oct 2016

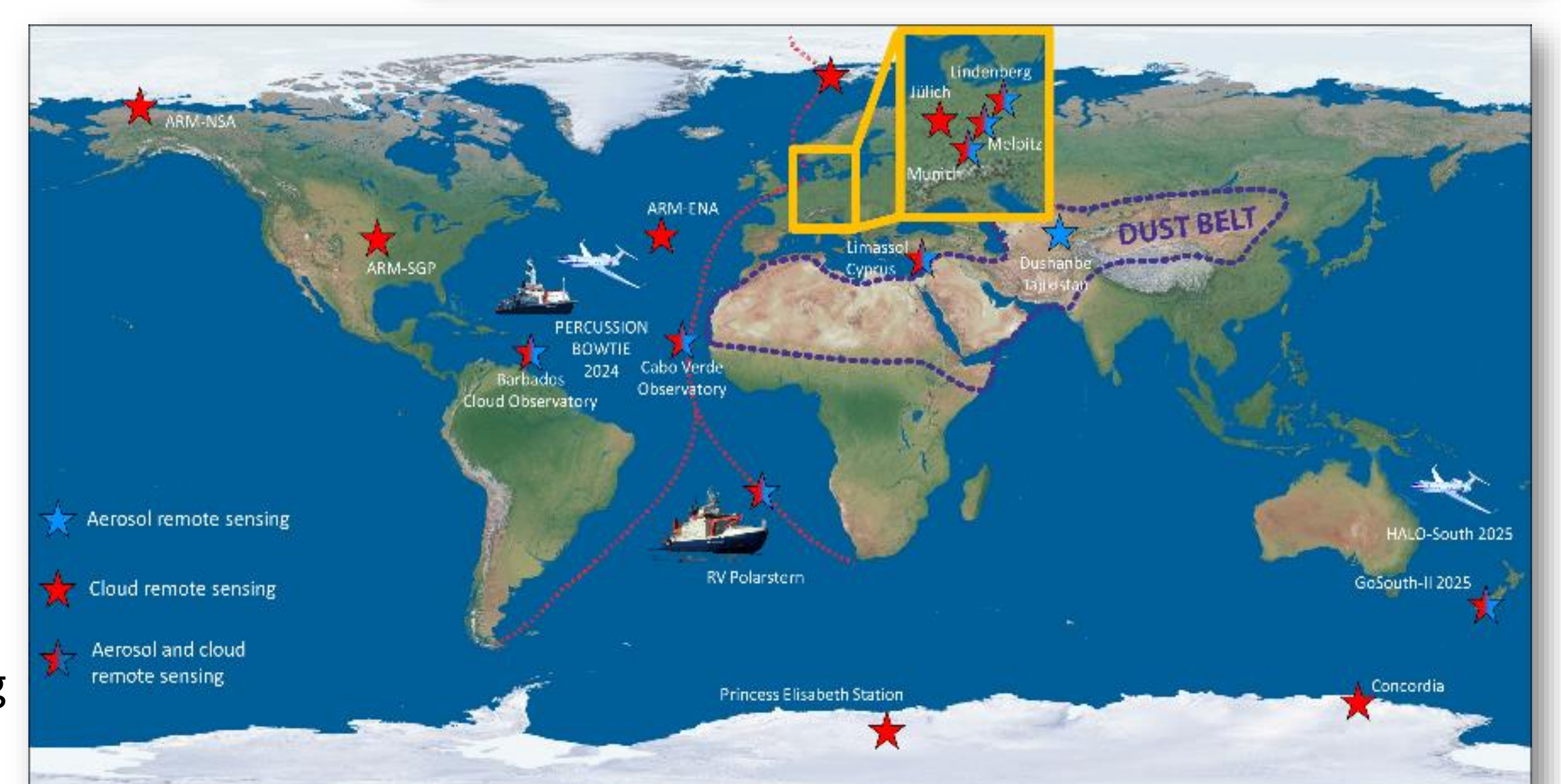
After Launch EarthCARE Cal/Val Campaigns:

- PERCUSION (trop. North Atlantic; east/west): 12 Aug – 28 Sept 2024
- PERCUSION-EU (EarthCARE underpasses over Europe): Nov 2024
- HALO-South + GoSouth-II (Southern Ocean)

GIVE – German Initiative for the Validation of EarthCARE

- EarthCARE will provide over 40 data products
- Consortium of 10 German research institutes
- Holistic validation approach
- Start of project 01/2024 – support over mission lifetime
- Validation of L1 and L2 EarthCARE data
- Including synergistic data products

Investigating aerosol-cloud-dynamics interaction with LACROS



ATLID

TROPOS - L1/L2 and synergistic ATLID-MSI; maintaining ground-based stations (LACROS, PollyNET)
DLR - HALO validation campaign with WALES
FZ Juelich - Inverse Modelling with 4D var data assimilation
MPI-M – partner of HALO validation campaign and contribution of ground-based data (BCO)

BBR

TROPOS - 3D field campaigns in 2026 with DWD-Lindenberg
University Leipzig - measuring radiation with Barcadi, SMART and VELOX on HALO

CPR

LMU – providing data from ACTRIS station, derived cloud + precipitation products
University of Cologne – forward simulations from ground data and providing ACTRIS station data
DWD - Lindenberg – providing CPR and Lidar data
University Hamburg – modelling IWC with neuronal networks
DLR - HALO validation campaign with MIRA35

MSI

TROPOS - validation of synergistic aerosol products
FU Berlin - aerosol validation and cross checks with forward modeling
DLR - HALO validation campaign with specMACS