

The EnMAP Foreground Mission and Campaign Activities

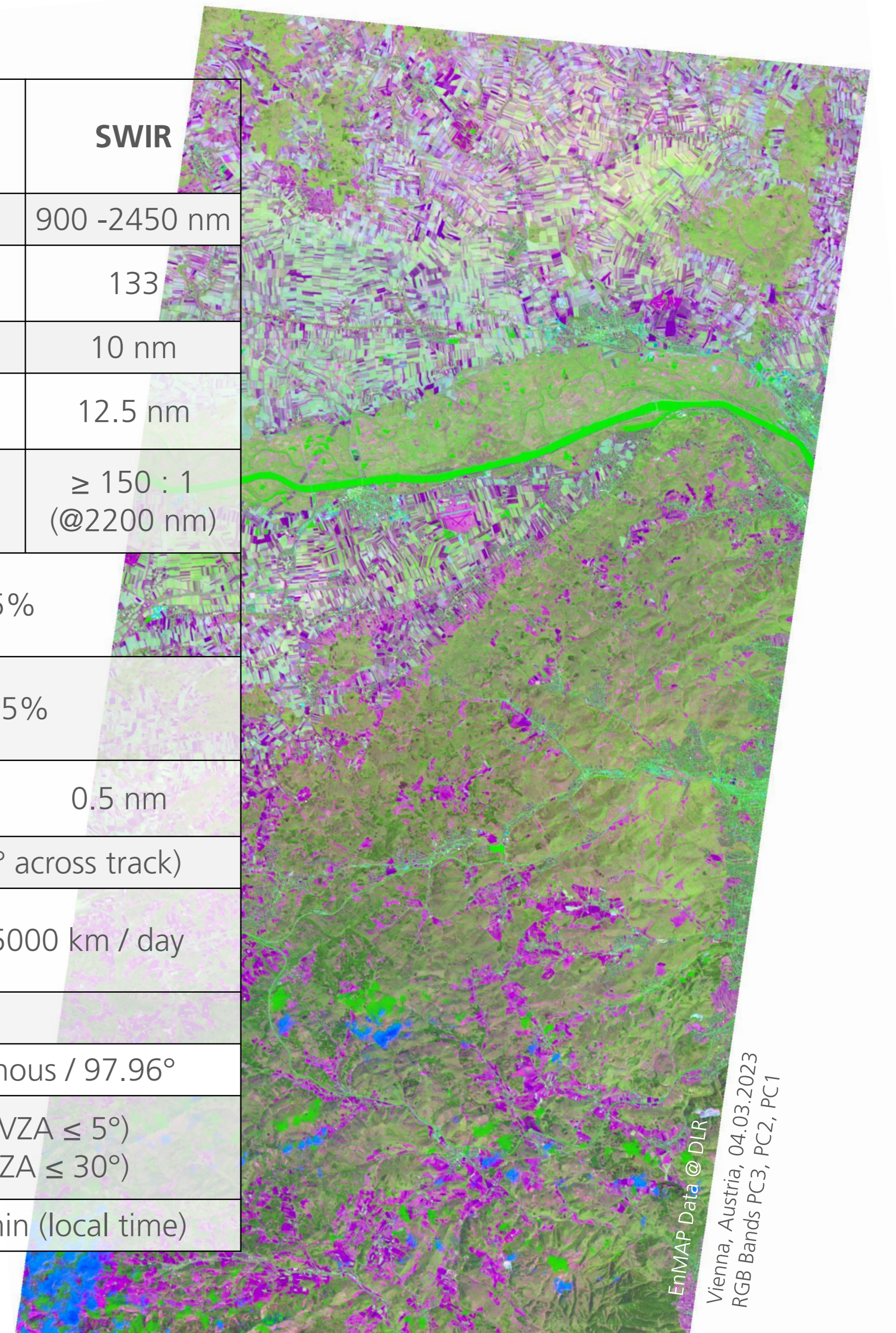
N. Pinnel¹, D. Plesia¹, T. Padsuren¹, M. Brell⁴, V. Krieger⁶, Ch. Lenzen³, S. Baumann¹,
M. Habermeyer¹, E. Carmona², S. Chabrillat^{4,5}, Laura La Porta⁶

- ¹ German Aerospace Center (DLR), German Remote Sensing Data Center, Oberpfaffenhofen, Germany
- ² German Aerospace Center (DLR), Remote Sensing Technology Institute, Oberpfaffenhofen, Germany
- ³ German Aerospace Center (DLR), German Space Operations Center, Oberpfaffenhofen, Germany
- ⁴ German Research Center for Geosciences (GFZ), Potsdam, Germany
- ⁵ Leibniz University Hannover, Institute of Soil Science, Hannover, Germany
- ⁶ German Aerospace Center (DLR), Space Administration, Bonn, Germany

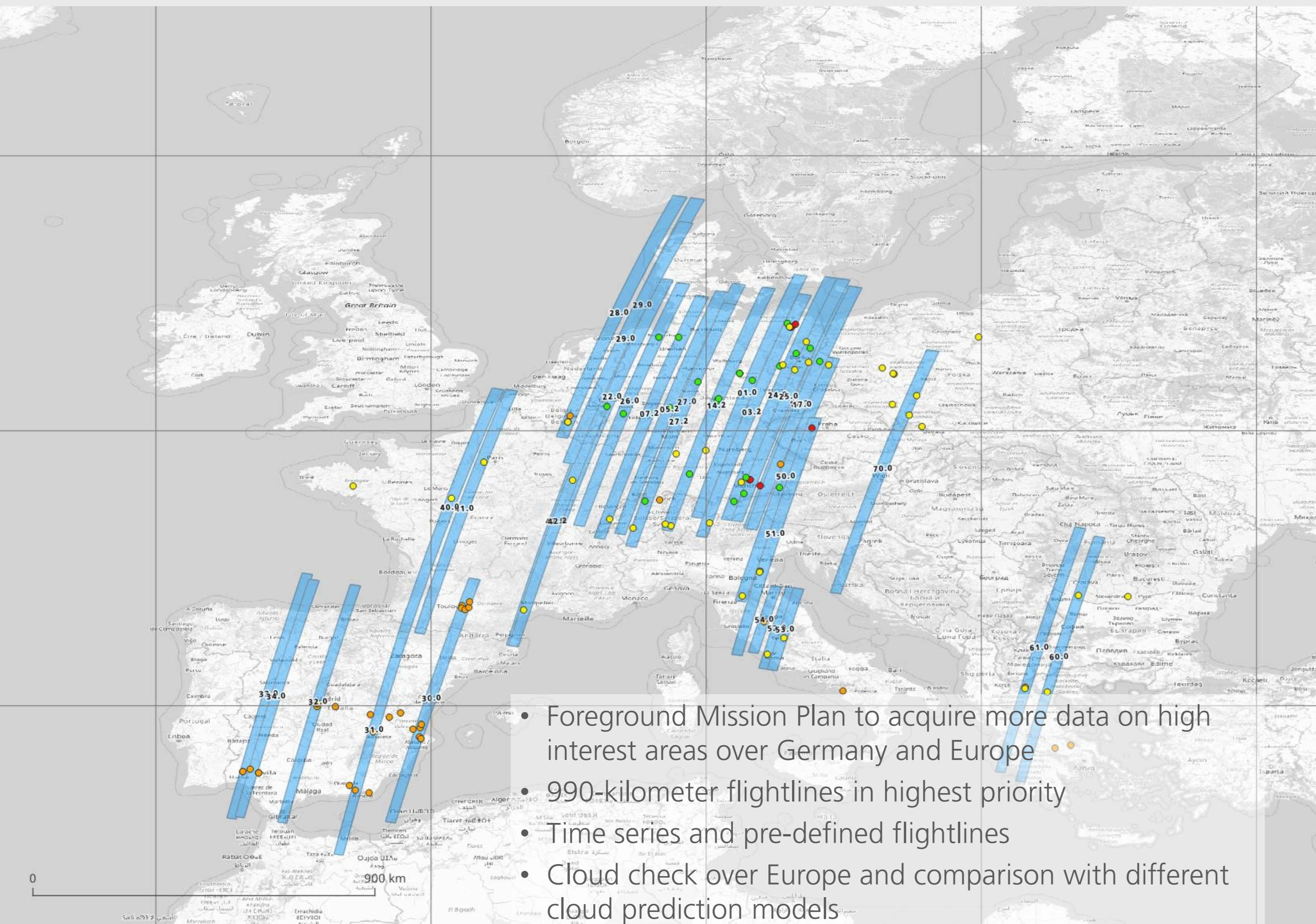
EnMAP (Environmental Mapping and Analysis Program; www.enmap.org) is a German satellite mission launched in April 2022. EnMAP is an optical remote sensing mission (VNIR/SWIR) with high spatial (30 m GSD) and spectral (FWHM ~6-12 nm) resolution. To boost data coverage, a Foreground Mission focusing on extended high priority flightlines over Europe was launched, creating systematic time series during the vegetation period. The acquisition plan is updated monthly, considering factors like ground activities and weather conditions. Users can receive advanced information about future high priority observations at https://www.enmap.org/data_tools/foreground_mission



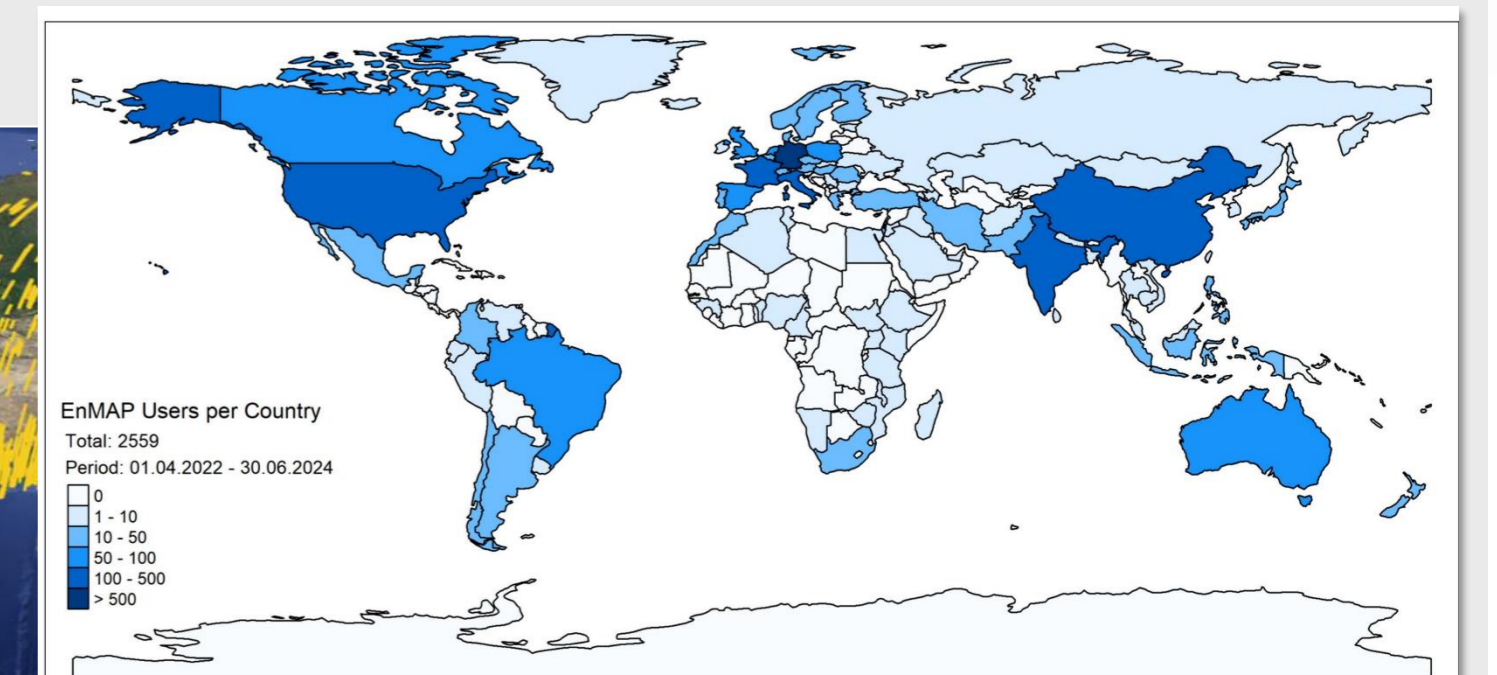
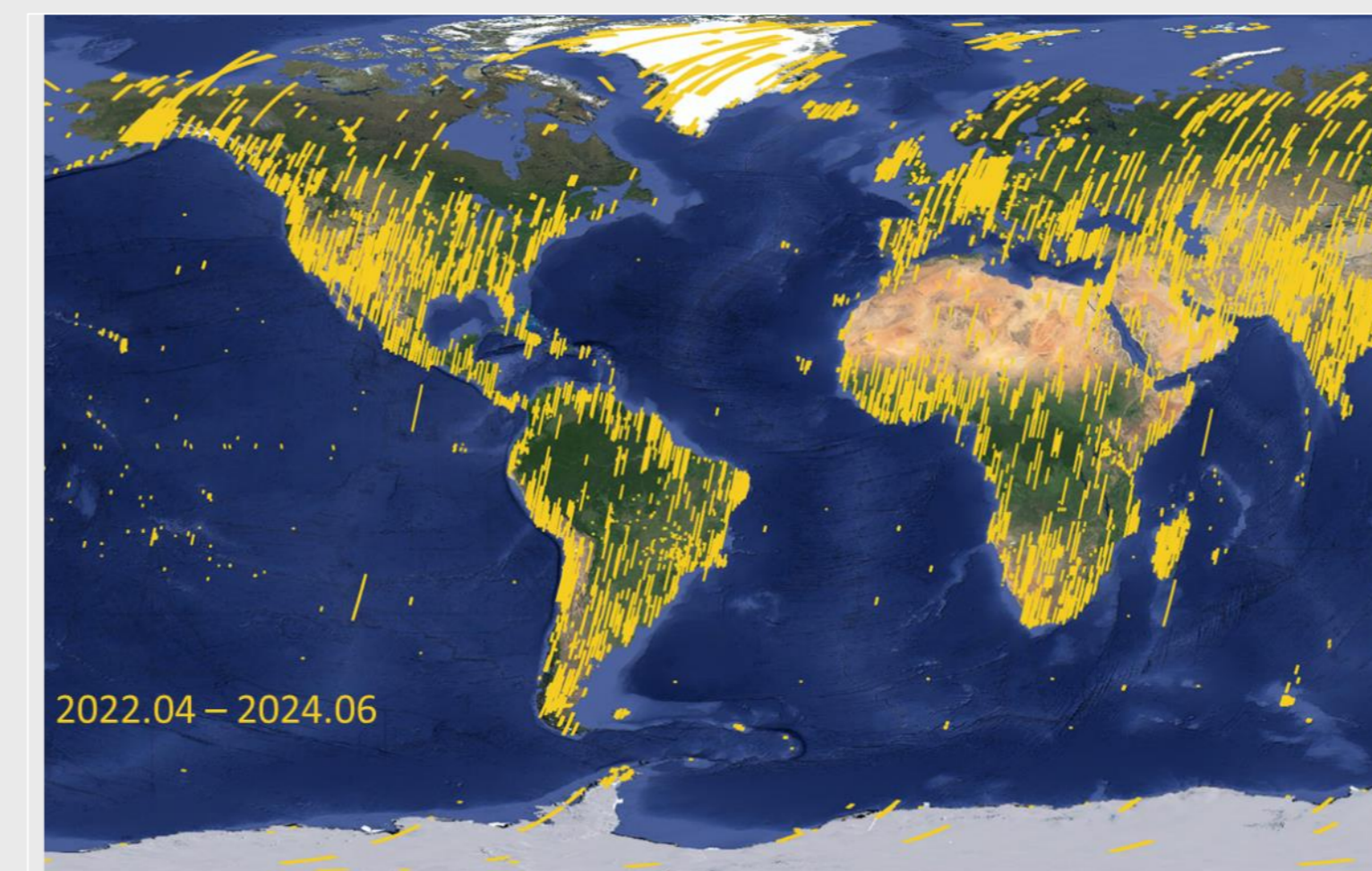
Instrument characteristics and requirements	VNIR	SWIR
Spectral range	420 – 1000 nm	900 -2450 nm
Number of spectral channels	91	133
Spectral sampling interval	6.5 nm	10 nm
Spectral bandwidth (FWHM)	8.1 nm	12.5 nm
Signal to Noise ratio (SNR)	≥ 500 : 1 (@500 nm)	≥ 150 : 1 (@2200 nm)
Radiometric accuracy (absolute)	<5%	
Radiometric stability (between calibrations)	<2.5%	
Spectral accuracy (absolute)	0.5 nm	0.5 nm
Swath width	30 km (2.63° across track)	
Swath length - Max. length / day	1000 km - 5000 km / day	
Orbit characteristics		
Orbit / Inclination	sun-synchronous / 97.96°	
Target revisit time	27 days (VZA ≤ 5°) 4 days (VZA ≤ 30°)	
Equator crossing time	11:00 ± 18 min (local time)	



Foreground Mission and Campaign Activities



EnMAP Acquisitions



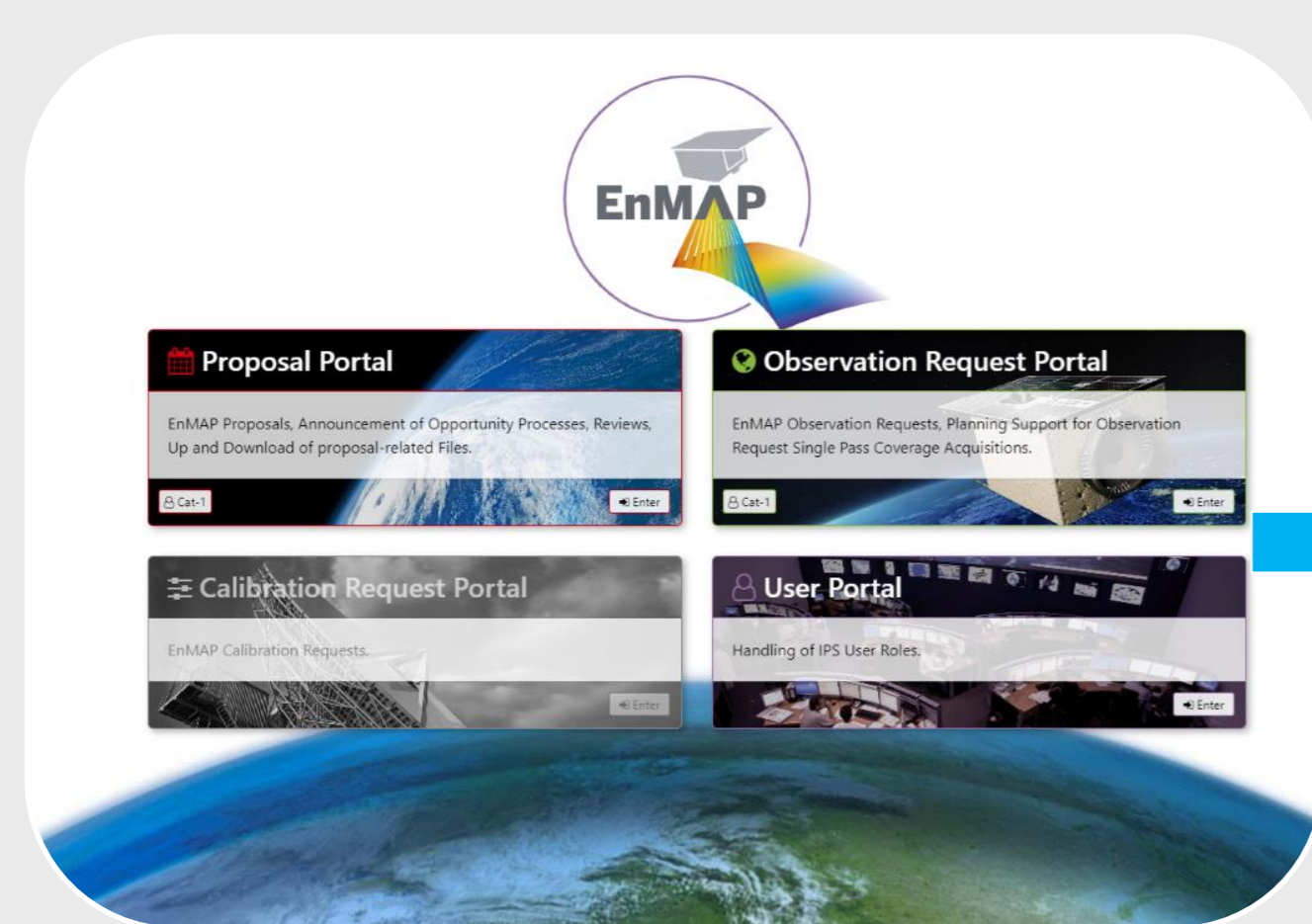
Global Map of number of registered users (with active user role) per country

Global map of EnMAP Data acquisitions : 82050 L0 products were acquired and archived [04.2022-06.2024]

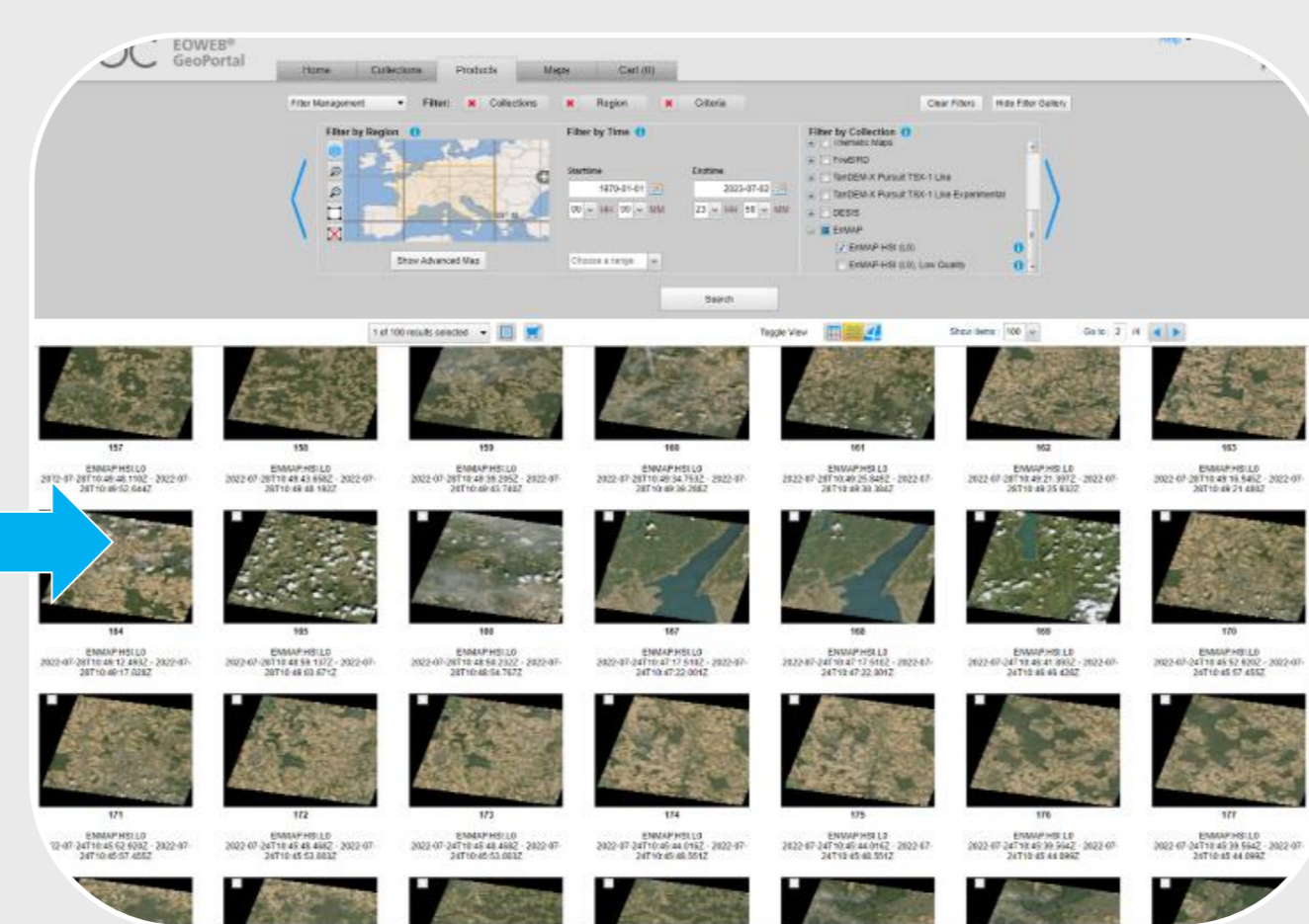
Chabrillat, S. et al, 2024, <https://doi.org/10.1016/j.rse.2024.114379>

Data Access

EnMAP Instrument Planning Portal



EnMAP EOWEB@GeoPortal

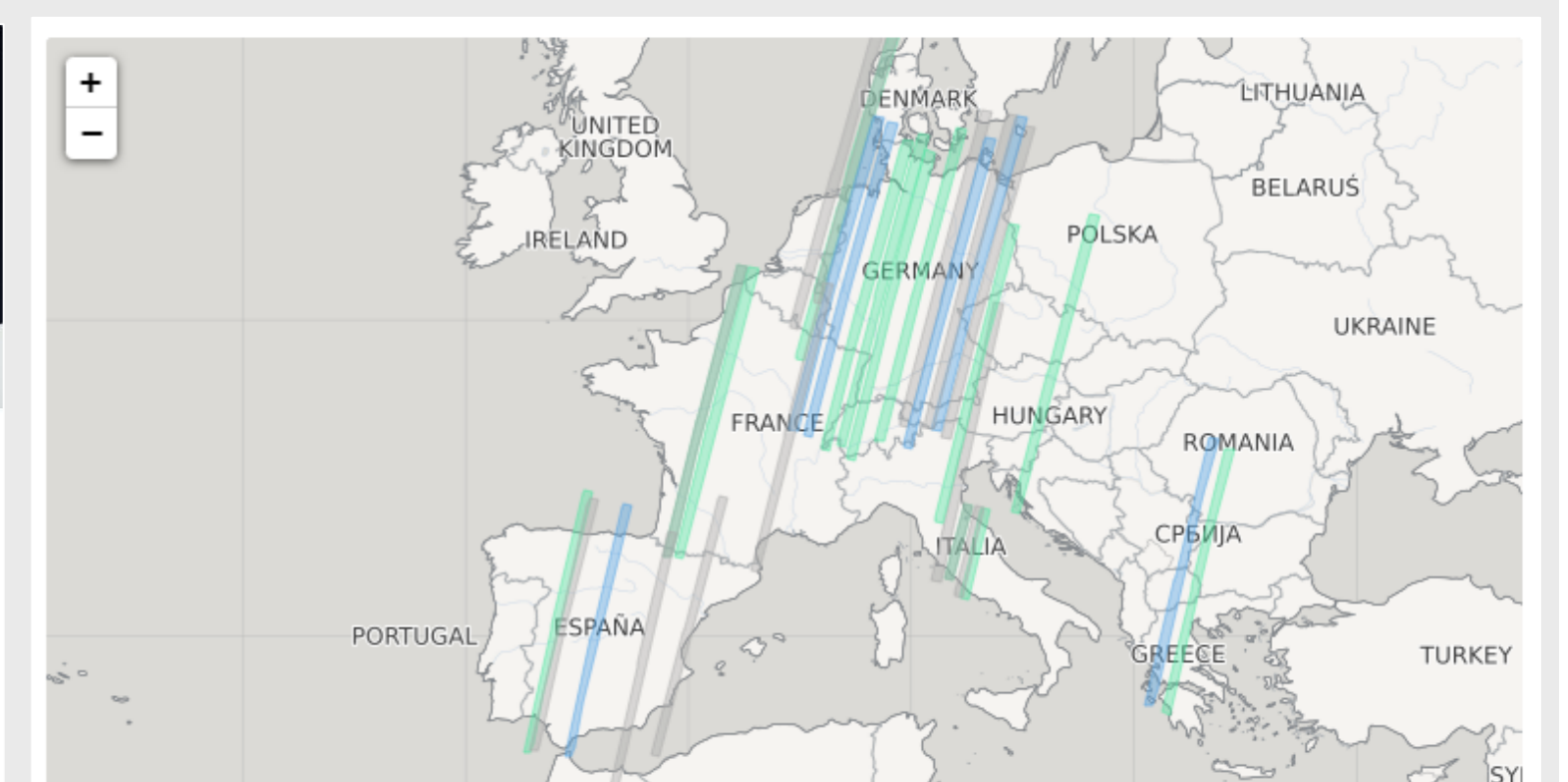


- Access to Proposal and Observation request portal
- Submission for all users responding to a Data Announcement of Opportunity
- Access to observation request portal
- Registration data updates
- Link to EOWEB Archive
- Access to EnMAP Data Archive
- Collection and Product Metadata (order): OGC CSW
- VNIR, SWIR, and Quality Quicklooks: OGC WMS
- Graphical Client to OGC CSW/WMS: EGP (EOWEB® GeoPortal)
- Product covers 30 km x 30 km and is delivered via FTPS (FTP with SSL)

Free and open data policy

Data Access: <https://planning.enmap.org/>

Where to find more information about EnMAP ?



EnMAP website provides general mission information

- EnMAP mission objectives and status
- Data products and processing chains
- Ongoing scientific programs and activities
- Regular updates on Foreground Mission
- Mission Quarterly Reports, Ground Tracks, FQR, Screencasts ... etc

ID	Date [M/D/Y]	Time [UTC]	Center [Lat, Lon]	Duration [sec]	Off-Nadir Angle [°]	Pathdirection	Status	Data
28.0	10/20/2024	11:16:23 AM	54.158, 6.712	146.922	-0.046	descending	unplanned	GeoJSON
29.0	10/20/2024	11:16:37 AM	53.220, 6.951	146.922	3.805	descending	unplanned	GeoJSON
70.0	10/22/2024	10:30:54 AM	48.517, 16.342	146.922	1.953	descending	unplanned	GeoJSON
14.2	10/23/2024	10:55:37 AM	50.799, 10.283	146.922	-2.062	descending	unplanned	GeoJSON
33.0	10/25/2024	11:49:09 AM	40.355, -5.941	146.922	-1.077	descending	unplanned	GeoJSON
34.0	10/25/2024	11:49:12 AM	40.268, -5.670	142.47	1.098	descending	unplanned	GeoJSON
51.0	10/26/2024	10:35:17 AM	46.165, 12.464	142.47	-11.559	descending	unplanned	GeoJSON
53.0	10/26/2024	10:36:56 AM	42.780, 12.868	48.974	-1.431	descending	unplanned	GeoJSON
27.2	10/27/2024	10:59:24 AM	50.219, 8.921	146.922	-3.389	descending	unplanned	GeoJSON
40.0	10/28/2024	11:25:37 AM	47.115, 0.610	146.922	-8.475	descending	unplanned	GeoJSON
52.0	10/30/2024	10:40:31 AM	42.825, 12.579	48.974	2.778	descending	unplanned	GeoJSON
54.0	10/30/2024	10:40:32 AM	43.139, 12.121	40.07	-1.151	descending	unplanned	GeoJSON
05.2	10/31/2024	11:02:53 AM	50.667, 8.580	146.922	-1.096	descending	unplanned	GeoJSON
41.0	11/1/2024	11:29:12 AM	47.068, 1.143	146.92	0.884	descending	unplanned	GeoJSON
31.0	11/1/2024	11:31:26 AM	39.050, -2.100	146.922	-3.194	descending	unplanned	GeoJSON
50.0	11/3/2024	10:41:51 AM	48.237, 12.821	146.922	-2.453	descending	unplanned	GeoJSON
54.0	11/3/2024	10:44:07 AM	43.139, 12.121	40.07	5.124	descending	unplanned	GeoJSON
7.2	11/4/2024	11:06:32 AM	50.503, 7.847	146.922	0.345	descending	unplanned	GeoJSON
60.0	11/5/2024	9:56:37 AM	41.698, 22.780	146.922	0.788	descending	unplanned	GeoJSON
40.0	11/5/2024	11:32:47 AM	47.115, 0.610	146.922	3.165	descending	unplanned	GeoJSON
30.0	11/5/2024	11:34:38 AM	40.196, -0.032	146.922	15.523	descending	unplanned	GeoJSON

www.enmap.org/data_tools/foreground_mission/

