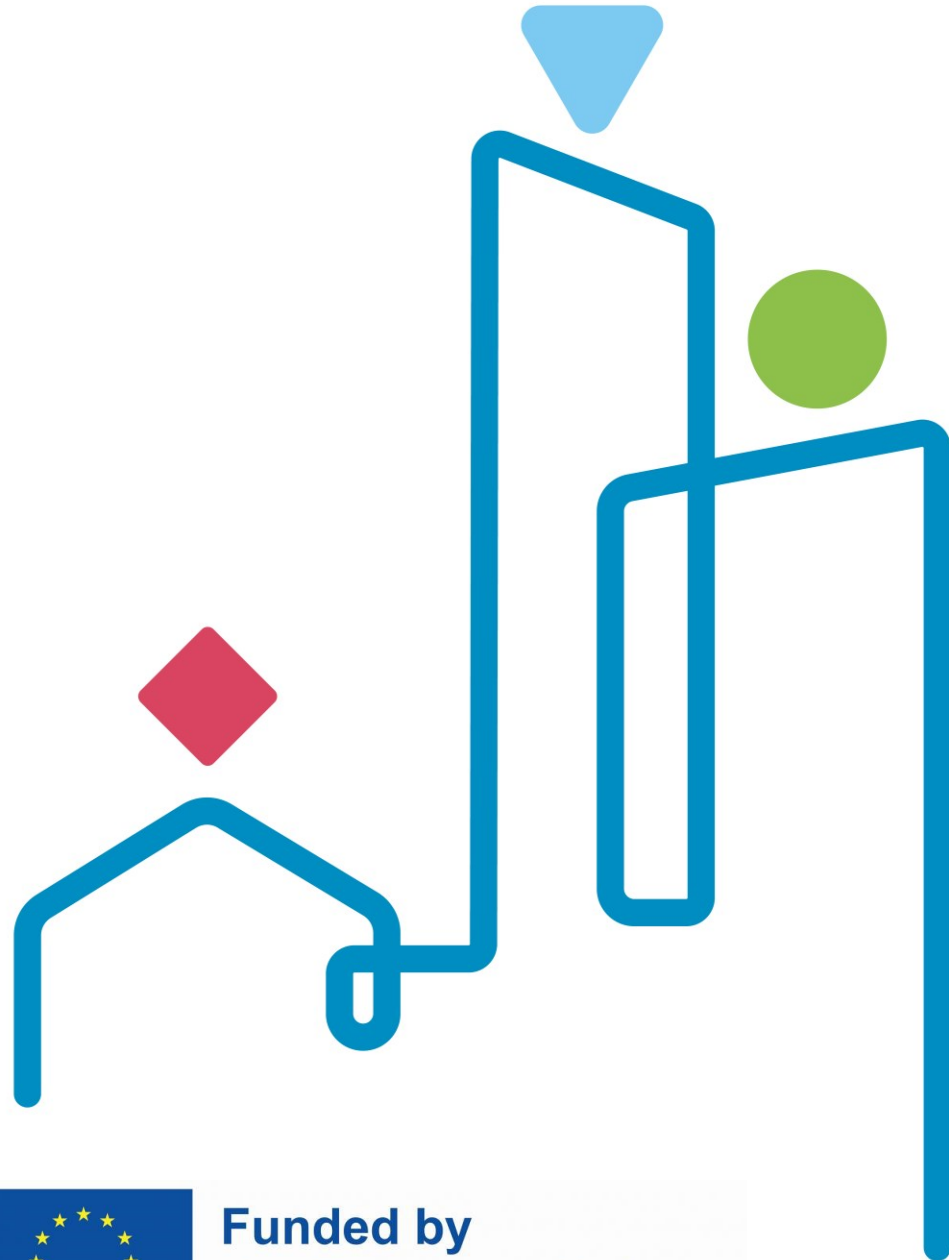




DLR  
Deutsches Zentrum  
für Luft- und Raumfahrt  
German Aerospace Center



Funded by  
the European Union

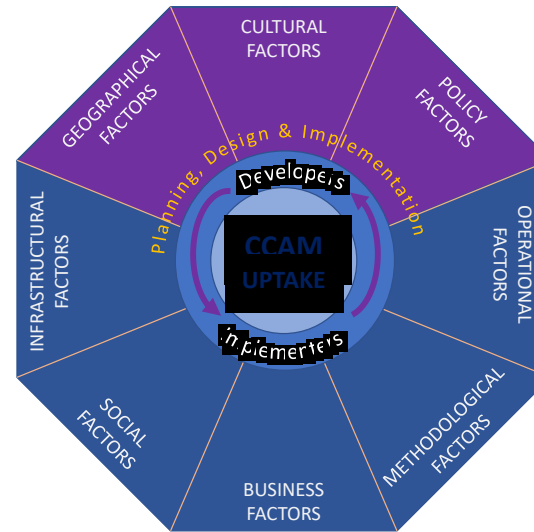
# Policy diversity in transportation

*Diversify – CCAM Project*

Dr. Andrea Hauslbauer

11/10/24

# Geography Culture Policy



## Policy

- a theoretical or technical **instrument** that is **formulated to solve specific problems affecting, directly or indirectly, societies** across different periods of times and geographical spaces  
(Ruiz Estrada, 2011)

## Policy diversity

- the **heterogeneity of policy instruments and political, legal, regulatory, and governance frameworks** across local contexts

## Exemplary policy aspects

- policy priorities
- decision-making processes
- stakeholders' engagement and collaboration
- local laws and regulations

# Stakeholder's perception of CCAM policies on a local level

Interviews with stakeholders: developers, policymakers, academics

*What policy aspects influence the mobility needs, attitudes and choices in your region?*

*Are there any policy aspects that may affect the deployment / operation / acceptance of CCAM systems in your region?*



# Local perspectives on CCAM policy

Infra-  
structure

Funding,  
financial  
support

Transit,  
shared  
mobility

Integration  
of modes

# Local perspectives on CCAM policy

Infra-  
structure

Funding,  
financial  
support

Transit,  
shared  
mobility

Integration  
of modes

Regulatory and  
bureaucratic  
barriers



- Lack of frameworks/policies/...
- Bureaucratic delays, overregulation
- Complexity in decision processes

# Local perspectives on CCAM policy

Infra-structure

Funding, financial support

Transit, shared mobility

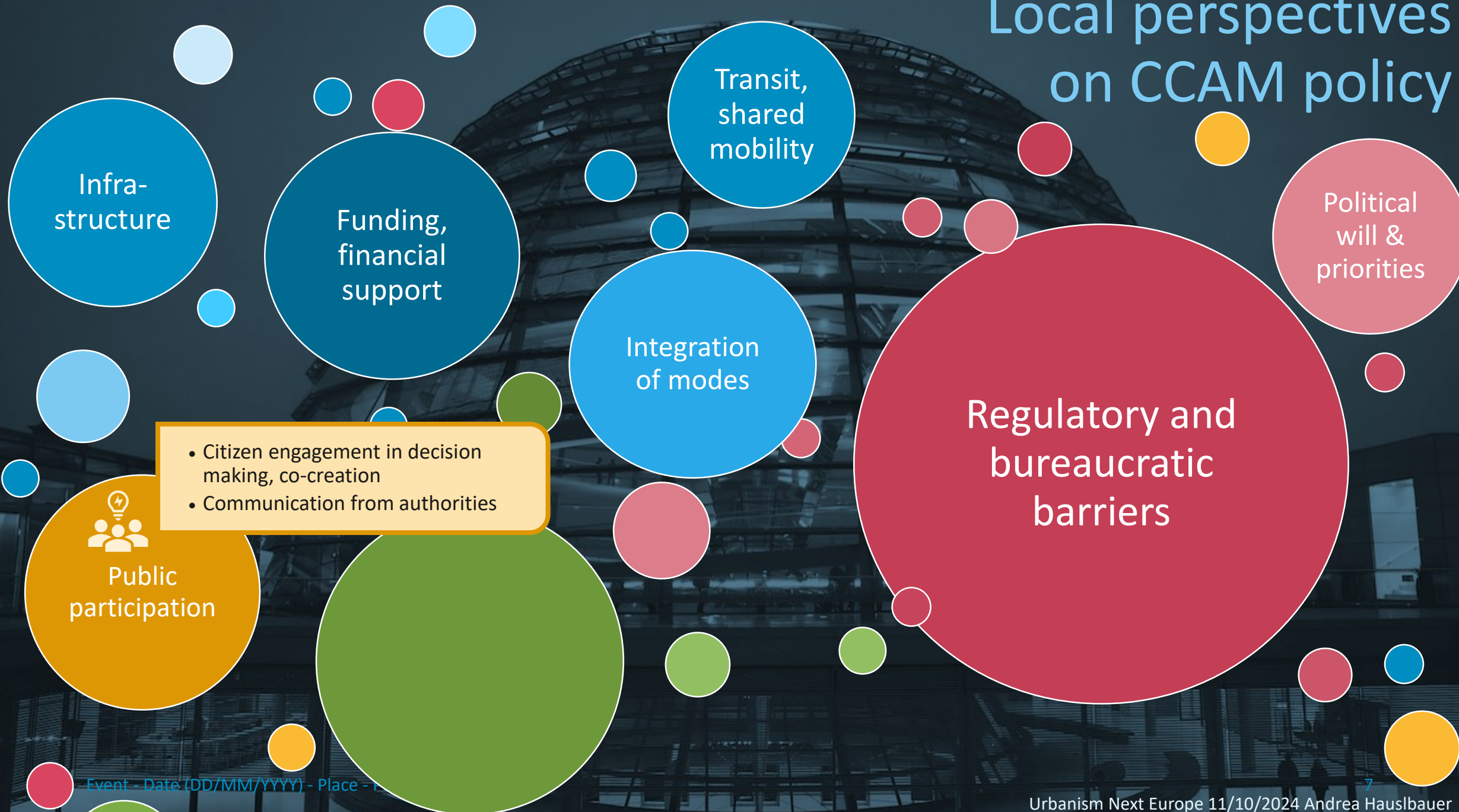
Integration of modes

- Decision-making power
- Political will and motivation
- Openness for innovation

Political will & priorities

Regulatory and bureaucratic barriers

# Local perspectives on CCAM policy



# Local perspectives on CCAM policy

Infra-  
structure

Funding,  
financial  
support

Transit,  
shared  
mobility

Political  
will &  
priorities

Integration  
of modes

Regulatory and  
bureaucratic  
barriers

Public  
participation

Sustainability  
goals



- Social sustainability initiatives
- Promotion of green mobility
- Climate goals



# Local perspectives on CCAM policy

Infra-  
structure

Funding,  
financial  
support

Transit,  
shared  
mobility

Political  
will &  
priorities

Integration  
of modes

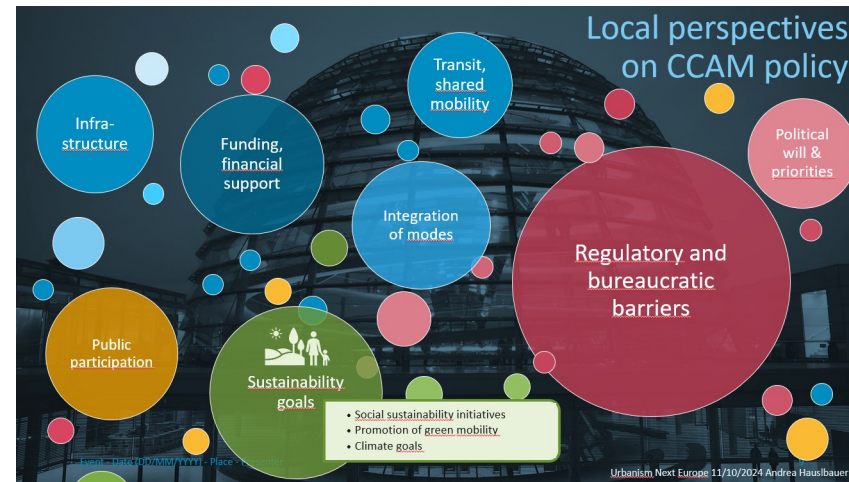
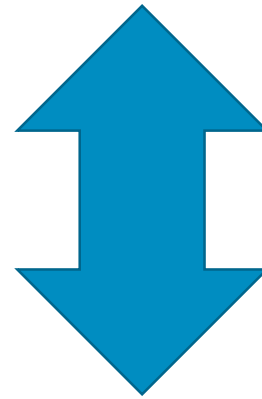
Regulatory and  
bureaucratic  
barriers

Public  
participation

Sustainability  
goals

- Social sustainability initiatives
- Promotion of green mobility
- Climate goals

# EUROPEAN LEVEL





# Policy diversity index and KPIs

## Index

- **weighted index** that aggregates measures of
  - *heterogeneity of policy instruments, governance framework,*
  - *policy priorities & decision making processes,*
  - *stakeholders' engagement and collaboration*
  - *local laws and regulation.*
- A higher **Policy Alignment Index** indicates that CCAM policies are *adaptive, inclusive, responsive, tailored, aligned with public interests, and supporting coordinated innovation* across diverse regions.

## KPIs

- **Increased knowledge** about the **influence of geographical and cultural dimensions** on the societal **acceptability, uptake** and use of **CCAM**
- A **strategy to support the fair deployment** of CCAM systems and services, **adapted to local contexts** and cultures, leading to enhanced acceptability and willingness to use CCAM in Europe