



GeoDPA'24

**23.-25. April 2024
in Oldenburg**

International Conference on **Geo**information **Data**, **P**rocessing and **A**pplications

No research in transportation without spatial data!

Michael Scholz, Institute of Transportation Systems, DLR

Oldenburg, 2024-04-23

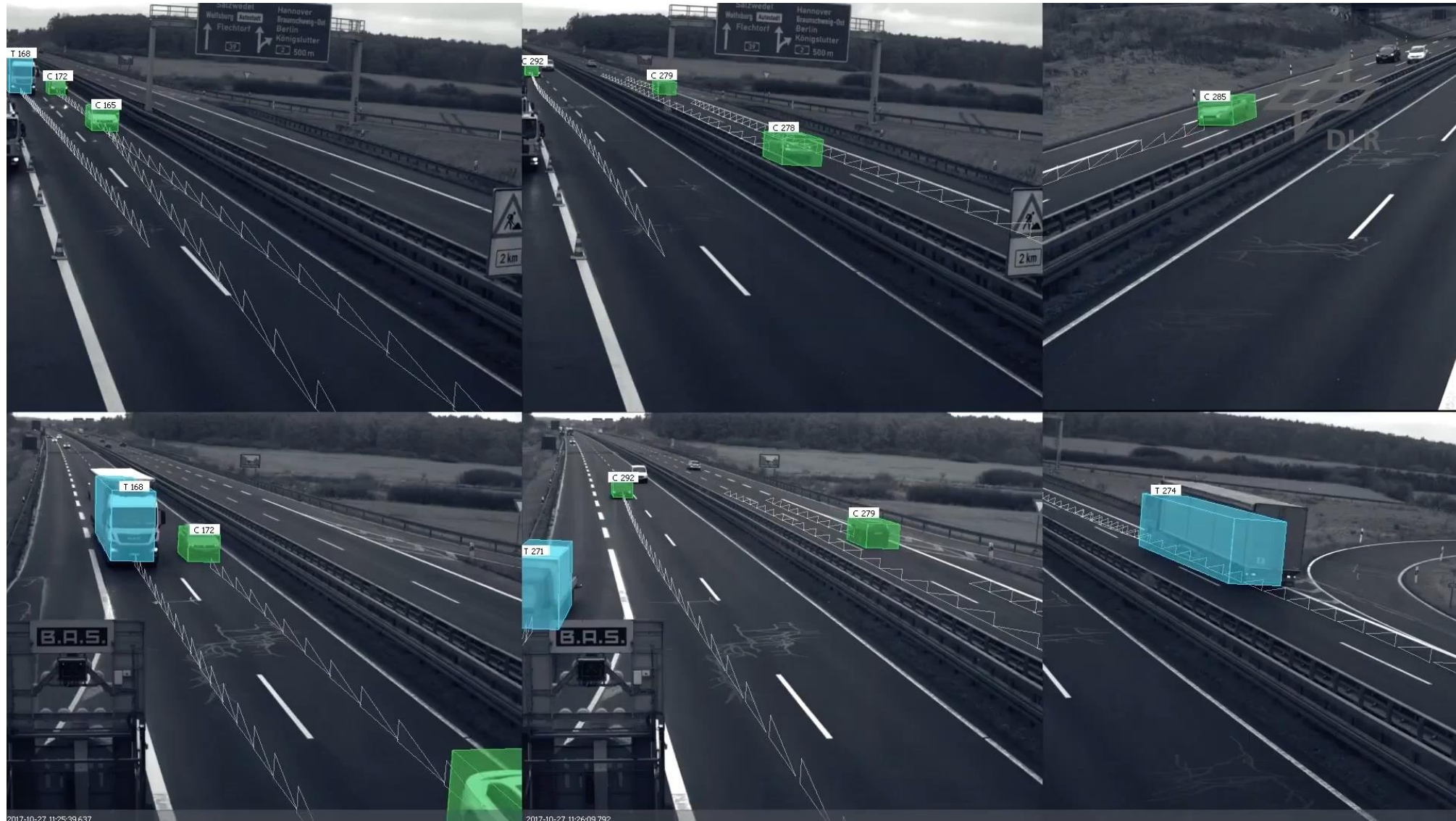
CC BY 4.0

Research infrastructure



Object and trajectory detection

<https://youtu.be/yg7al2-S06c>

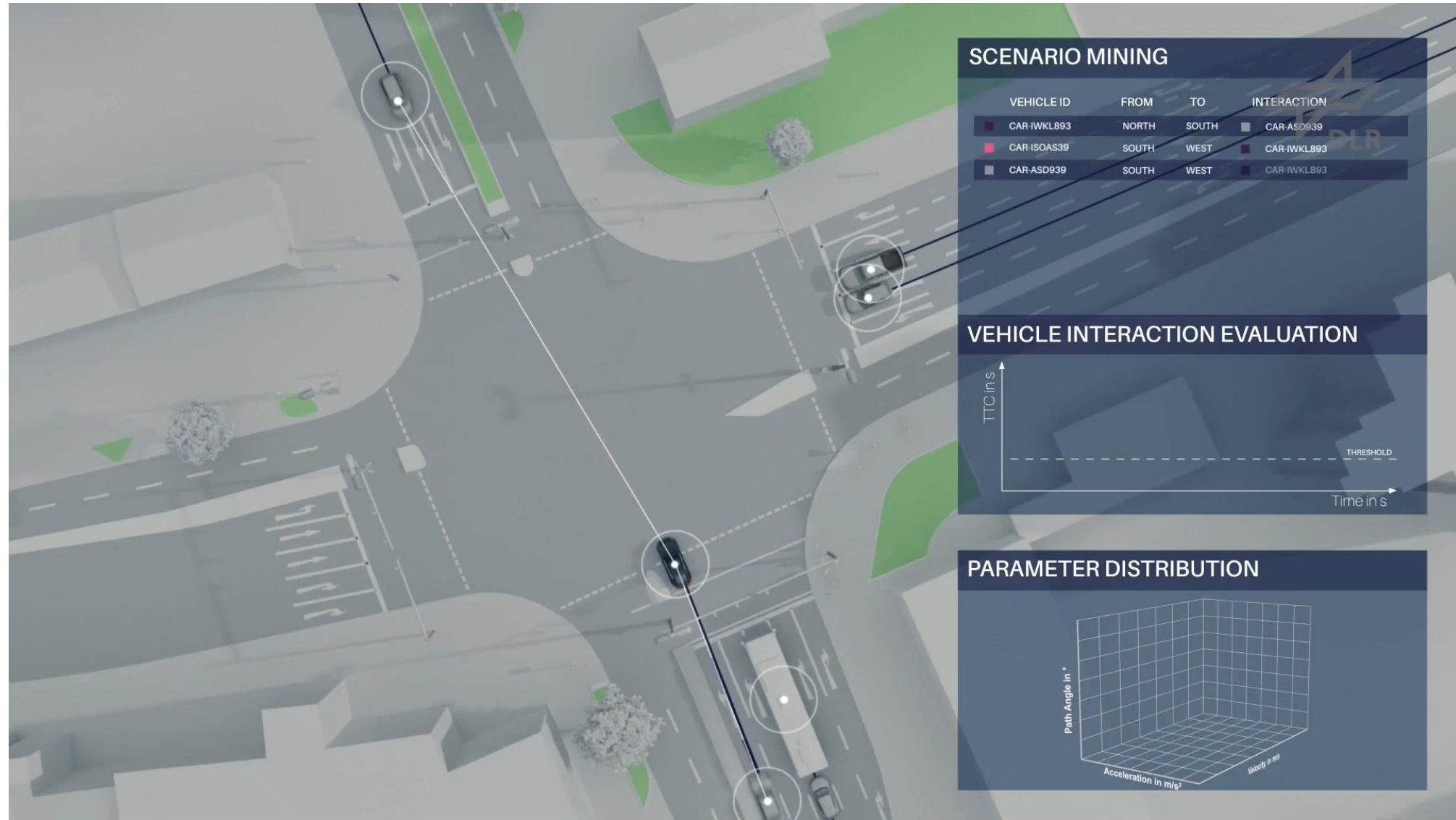


2017-10-27 11:25:39.637

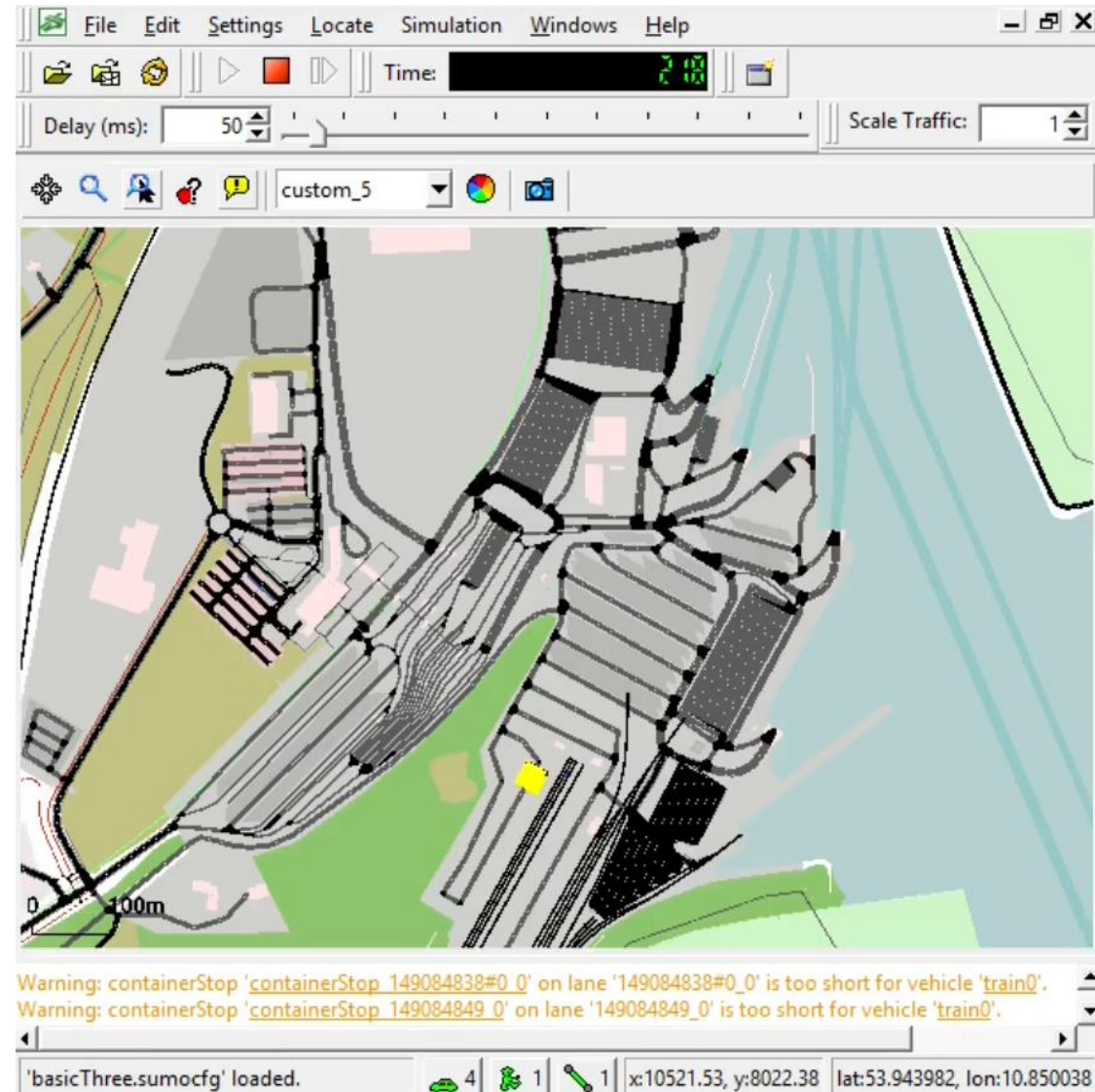
2017-10-27 11:26:09.792

Scenario mining

<https://youtu.be/Uwb6lbrRyeY>



Traffic simulation



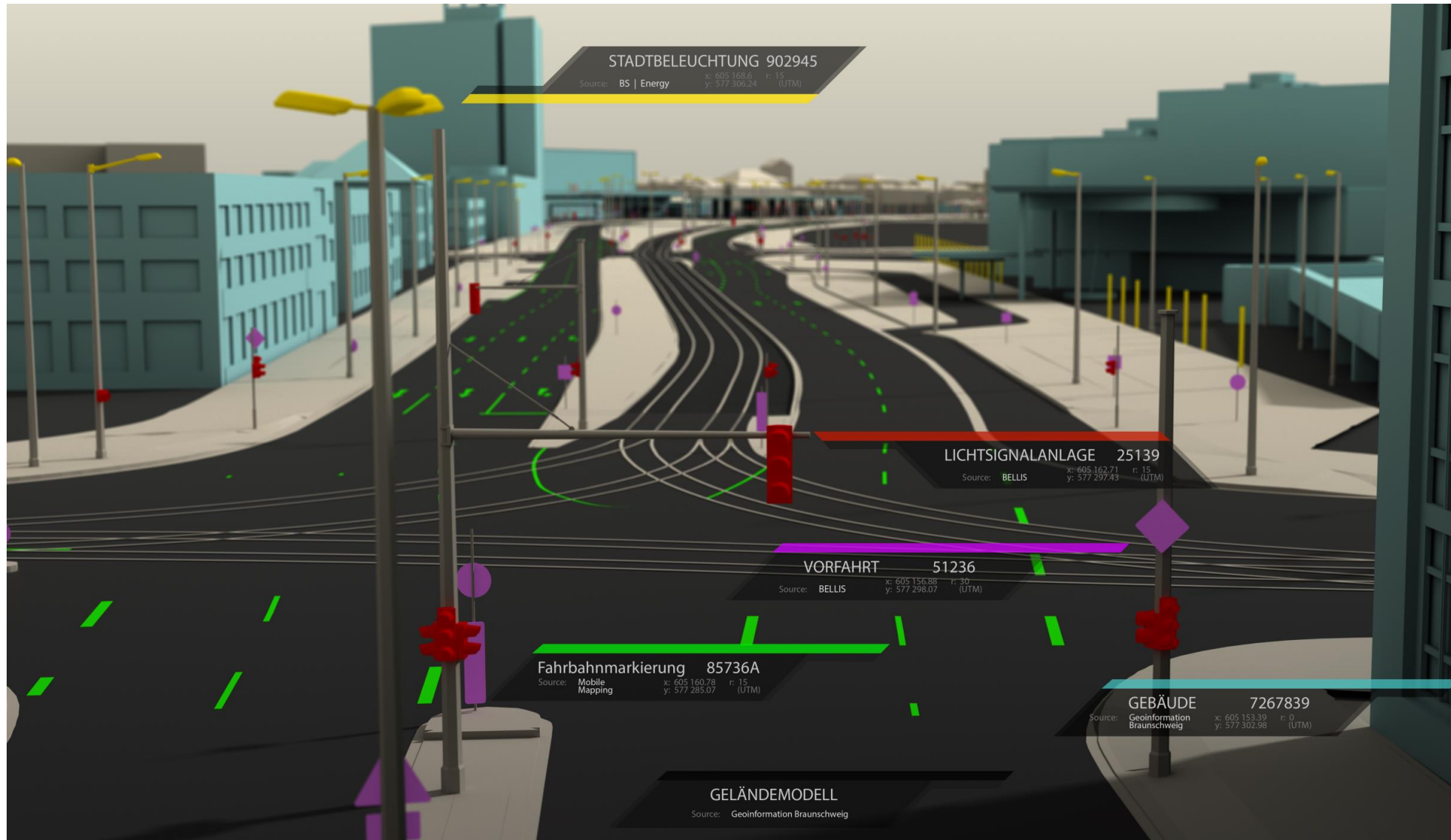
Urban digital twins for simulation



Urban digital twins for simulation



Urban digital twins for simulation



Automated driving functions



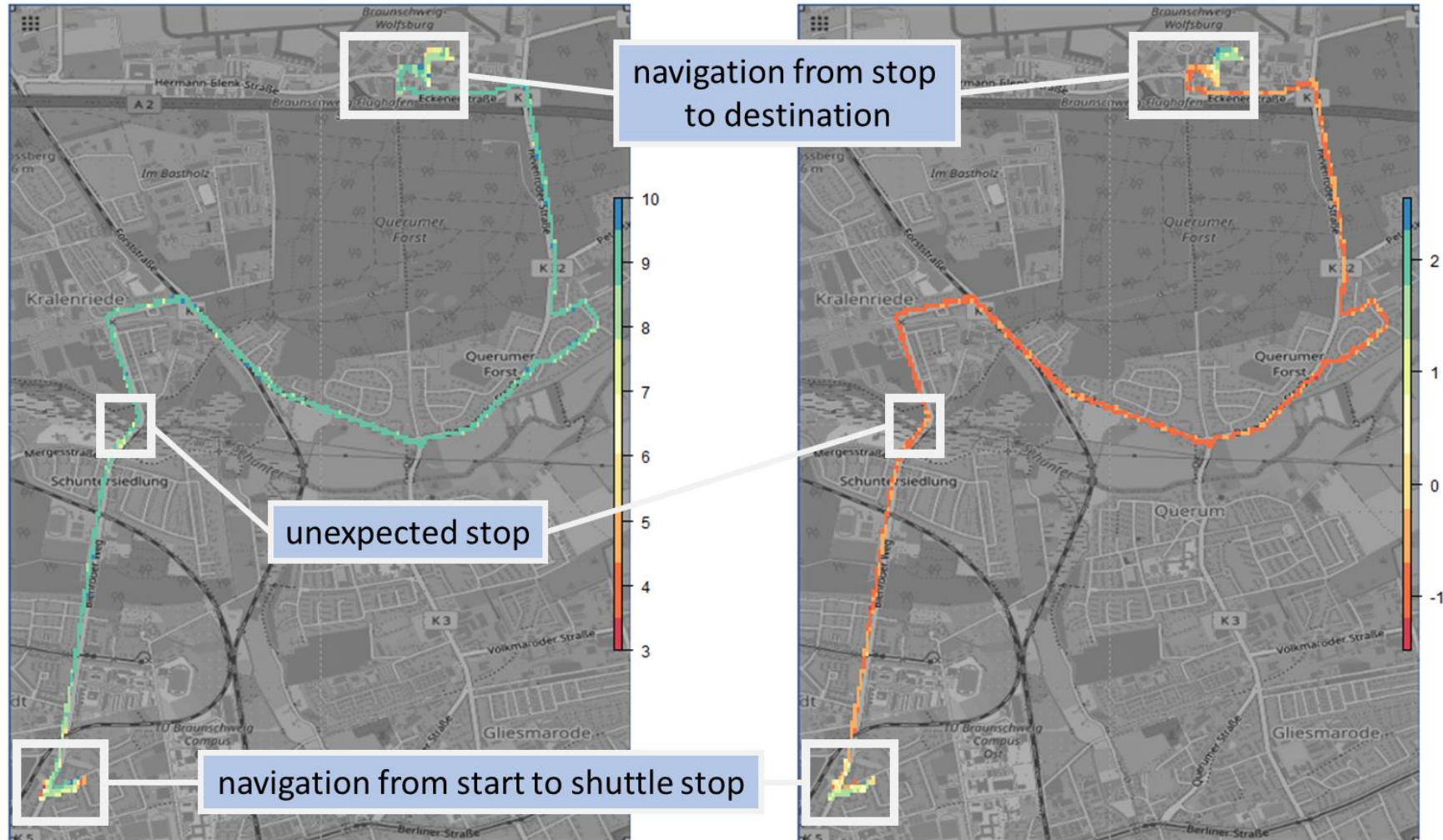
V2X communication



Travel experience mapping

self-reported comfort

normalized heart rate



Spatial metadata management

Filter

Expand Collapse

TYPE OF RESOURCES

- Dataset (5)

AVAILABLE ACTIONS

- Viewable (5)

TOPICS

- Transportation (4)
- Utilities communication (1)

PROVIDED BY

- Digital Atlas (5)

YEARS

- 2021 (2)
- 2019 (1)
- 2012 (1)

FORMATS

- OpenDRIVE (4)

REPRESENTATION TYPES

- Vector (4)

UPDATE FREQUENCIES

- Not planned (3)
- As needed (1)
- Unknown (1)

STATUS

Categories 

Mobilfunknetzabdeckung im 5G-Reallabor



Mobilfunkabdeckung der Netze 2G, 3G, 4G, 5G im Projekt 5G-Reallabor auf Grundlage von Daten der Bundesnetzagentur vom Oktober 2021.

Abgeschlossen

Categories 

Fahrstreifengenaue Straßenkarte innerstädtischer Bereiche in Wolfsburg




Diese fahrstreifengenaue Straßenkarte (HD-Karte) modelliert einen innerstädtischen Straßennetausschnitt der Stadt Wolfsburg (Niedersachsen, Deutschland) im OpenDRIVE-Format. Sie beinhaltet Referenzlinien, Fahrbahnbegrenzungen, Signale und Punktobjekte.


TS Open Data

Abgeschlossen

Categories 


Testdaten HD-Karte OpenDRIVE Testfeld Niedersachsen




Testschnipsel der HD-Karte vom Testfeld Niedersachsen im OpenDRIVE-Format. Beinhaltet Referenzlinien, Fahrbahnbegrenzungen, Signale und Punktobjekte.


TS Open Data

Abgeschlossen

Categories 

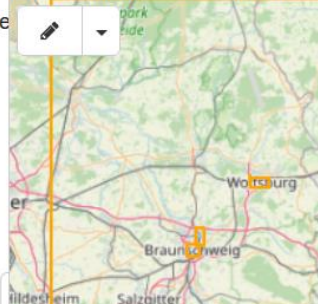
HD-Karte OpenDRIVE Innenstadttring Braunschweig






Vermessener Innenstadtring als virtuelle Referenzstrecke

TS Open Data

Abgeschlossen



MAP

Thanks!