

Accelerated Article Preview

A broadband thermal emission spectrum of the ultra-hot Jupiter WASP-18b

Received: 18 January 2023

Accepted: 16 May 2023

Accelerated Article Preview

Cite this article as: Coulombe, L.-P. et al. A broadband thermal emission spectrum of the ultra-hot Jupiter WASP-18b. *Nature* <https://doi.org/10.1038/s41586-023-06230-1> (2023)

Louis-Philippe Coulombe, Björn Benneke, Ryan Challener, Anjali A. A. Piette, Lindsey S. Wiser, Megan Mansfield, Ryan J. MacDonald, Hayley Beltz, Adina D. Feinstein, Michael Radica, Arjun B. Savel, Leonardo A. Dos Santos, Jacob L. Bean, Vivien Parmentier, Ian Wong, Emily Rauscher, Thaddeus D. Komacek, Eliza M.-R. Kempton, Xianyu Tan, Mark Hammond, Neil T. Lewis, Michael R. Line, Elspeth K. H. Lee, Hinna Shivkumar, Ian J. M. Crossfield, Matthew C. Nixon, Benjamin V. Rackham, Hannah R. Wakeford, Luis Welbanks, Xi Zhang, Natalie M. Batalha, Zachory K. Berta-Thompson, Quentin Changeat, Jean-Michel Désert, Néstor Espinoza, Jayesh M. Goyal, Joseph Harrington, Heather A. Knutson, Laura Kreidberg, Mercedes López-Morales, Avi Shporer, David K. Sing, Kevin B. Stevenson, Keshav Aggarwal, Eva-Maria Ahrer, Munazza K. Alam, Taylor J. Bell, Jasmina Blečić, Claudio Caceres, Aarynn L. Carter, Sarah L. Casewell, Nicolas Crouzet, Patricio E. Cubillos, Leen Decin, Jonathan J. Fortney, Neale P. Gibson, Kevin Heng, Thomas Henning, Nicolas Iro, Sarah Kendrew, Pierre-Olivier Lagage, Jérémy Leconte, Monika Lendl, Joshua D. Lothringer, Luigi Mancini, Thomas Mikal-Evans, Karan Molaverdikhani, Nikolay K. Nikolov, Kazumasa Ohno, Enric Pallé, Caroline Piaulet, Seth Redfield, Pierre-Alexis Roy, Shang-Min Tsai, Olivia Venot & Peter J. Wheatley

This is a PDF file of a peer-reviewed paper that has been accepted for publication. Although unedited, the content has been subjected to preliminary formatting. Nature is providing this early version of the typeset paper as a service to our authors and readers. The text and figures will undergo copyediting and a proof review before the paper is published in its final form. Please note that during the production process errors may be discovered which could affect the content, and all legal disclaimers apply.

A broadband thermal emission spectrum of the ultra-hot Jupiter WASP-18b

Louis-Philippe Coulombe^{1†}, Björn Benneke¹, Ryan Challener², Anjali A. A. Piette³, Lindsey S. Wisner⁴, Megan Mansfield⁵, Ryan J. MacDonald^{2,6}, Hayley Beltz², Adina D. Feinstein⁷, Michael Radica¹, Arjun B. Savel^{8,9}, Leonardo A. Dos Santos¹⁰, Jacob L. Bean⁷, Vivien Parmentier¹¹, Ian Wong¹², Emily Rauscher², Thaddeus D. Komacek⁸, Eliza M.-R. Kempton⁸, Xianyu Tan^{13,14,15}, Mark Hammond¹⁵, Neil T. Lewis¹⁶, Michael R. Line⁴, Elspeth K. H. Lee¹⁷, Hinna Shivkumar¹⁸, Ian J. M. Crossfield¹⁹, Matthew C. Nixon⁸, Benjamin V. Rackham^{20,21}, Hannah R. Wakeford²², Luis Welbanks⁴, Xi Zhang²³, Natalie M. Batalha²⁴, Zachory K. Berta-Thompson²⁵, Quentin Changeat^{26,27}, Jean-Michel Désert¹⁸, Néstor Espinoza¹⁰, Jayesh M. Goyal²⁸, Joseph Harrington²⁹, Heather A. Knutson³⁰, Laura Kreidberg³¹, Mercedes López-Morales³², Avi Shporer²¹, David K. Sing^{33,34}, Kevin B. Stevenson³⁵, Keshav Aggarwal³⁶, Eva-Maria Ahrer^{37,38}, Munazza K. Alam³, Taylor J. Bell³⁹, Jasmina Blečić^{40,41}, Claudio Caceres^{42,43,44}, Aarynn L. Carter²⁴, Sarah L. Casewell⁴⁵, Nicolas Crouzet⁴⁶, Patricio E. Cubillos^{47,48}, Leen Decin⁴⁹, Jonathan J. Fortney²⁴, Neale P. Gibson⁵⁰, Kevin Heng^{51,38,52}, Thomas Henning²⁹, Nicolas Iro⁵³, Sarah Kendrew²⁶, Pierre-Olivier Lagage⁵⁴, Jérémy Leconte⁵⁵, Monika Lendl⁵⁶, Joshua D. Lothringer⁵⁷, Luigi Mancini^{58,47,31}, Thomas Mikal-Evans³¹, Karan Molaverdikhani^{51,59,31}, Nikolay K. Nikolov¹⁰, Kazumasa Ohno²⁴, Enric Pallé⁶⁰, Caroline Piaulet¹, Seth Redfield⁶¹, Pierre-Alexis Roy¹, Shang-Min Tsai⁶², Olivia Venot⁶³, Peter J. Wheatley^{37,38}

¹ Department of Physics and Trottier Institute for Research on Exoplanets, Université de Montréal, Montréal, QC, Canada

² Department of Astronomy, University of Michigan, Ann Arbor, MI, USA

³ Earth and Planets Laboratory, Carnegie Institution for Science, Washington, DC, USA

⁴ School of Earth and Space Exploration, Arizona State University, Tempe, AZ, USA

⁵ Steward Observatory, University of Arizona, Tucson, AZ, USA

⁶ Department of Astronomy and Carl Sagan Institute, Cornell University, NY, USA

⁷ Department of Astronomy and Astrophysics, University of Chicago, Chicago, IL, USA

⁸ Department of Astronomy, University of Maryland, College Park, MD, USA

⁹ Center for Computational Astrophysics, Flatiron Institute, New York, NY, USA

¹⁰ Space Telescope Science Institute, Baltimore, MD, USA

¹¹ Université Côte d'Azur, Observatoire de la Côte d'Azur, CNRS, Laboratoire Lagrange, France

¹² NASA Goddard Space Flight Center, Greenbelt, MD, USA

¹³ Tsung-Dao Lee Institute, Shanghai Jiao Tong University, Shanghai, People's Republic of China

¹⁴ School of Physics and Astronomy, Shanghai Jiao Tong University, Shanghai, People's Republic of China

¹⁵ Atmospheric, Oceanic and Planetary Physics, Department of Physics, University of Oxford, Oxford, UK

- ¹⁶ Department of Mathematics and Statistics, Faculty of Environment, Science and Economy, University of Exeter, Exeter, UK
- ¹⁷ Center for Space and Habitability, University of Bern, Bern, Switzerland
- ¹⁸ Anton Pannekoek Institute for Astronomy, University of Amsterdam, Amsterdam, The Netherlands
- ¹⁹ Department of Physics & Astronomy, University of Kansas, Lawrence, KS, USA
- ²⁰ Department of Earth, Atmospheric and Planetary Sciences, Massachusetts Institute of Technology, Cambridge, MA, USA
- ²¹ Kavli Institute for Astrophysics and Space Research, Massachusetts Institute of Technology, Cambridge, MA, USA
- ²² School of Physics, University of Bristol, Bristol, UK
- ²³ Department of Earth and Planetary Sciences, University of California Santa Cruz, Santa Cruz, California, USA
- ²⁴ Department of Astronomy and Astrophysics, University of California Santa Cruz, Santa Cruz, California, USA
- ²⁵ Department of Astrophysical and Planetary Sciences, University of Colorado, Boulder, CO, USA
- ²⁶ European Space Agency, Space Telescope Science Institute, Baltimore, MD, USA
- ²⁷ Department of Physics and Astronomy, University College London, United Kingdom
- ²⁸ School of Earth and Planetary Sciences (SEPS), National Institute of Science Education and Research (NISER), HBNI, Odisha, India
- ²⁹ Planetary Sciences Group, Department of Physics and Florida Space Institute, University of Central Florida, Orlando, Florida, USA
- ³⁰ Division of Geological and Planetary Sciences, California Institute of Technology, Pasadena, CA, USA
- ³¹ Max Planck Institute for Astronomy, Heidelberg, Germany
- ³² Center for Astrophysics | Harvard & Smithsonian, Cambridge, MA, USA
- ³³ Department of Earth and Planetary Sciences, Johns Hopkins University, Baltimore, MD, USA
- ³⁴ Department of Physics & Astronomy, Johns Hopkins University, Baltimore, MD, USA
- ³⁵ Johns Hopkins APL, Laurel, MD, USA
- ³⁶ Indian Institute of Technology, Indore, India
- ³⁷ Centre for Exoplanets and Habitability, University of Warwick, Coventry, UK
- ³⁸ Department of Physics, University of Warwick, Coventry, UK
- ³⁹ BAER Institute, NASA Ames Research Center, Moffet Field, CA, USA
- ⁴⁰ Department of Physics, New York University Abu Dhabi, Abu Dhabi, UAE
- ⁴¹ Center for Astro, Particle and Planetary Physics (CAP3), New York University Abu Dhabi, Abu Dhabi, UAE
- ⁴² Instituto de Astrofísica, Universidad Andres Bello, Santiago, Chile
- ⁴³ Nucleo Milenio de Formacion Planetaria (NPF), Chile
- ⁴⁴ Centro de Astrofísica y Tecnologías Afines (CATA), Casilla 36-D, Santiago, Chile

- ⁴⁵ School of Physics and Astronomy, University of Leicester, Leicester
- ⁴⁶ Leiden Observatory, University of Leiden, Leiden, The Netherlands
- ⁴⁷ INAF – Osservatorio Astrofisico di Torino, Pino Torinese, Italy
- ⁴⁸ Space Research Institute, Austrian Academy of Sciences, Graz, Austria
- ⁴⁹ Institute of Astronomy, Department of Physics and Astronomy, KU Leuven, Leuven, Belgium
- ⁵⁰ School of Physics, Trinity College Dublin, Dublin, Ireland
- ⁵¹ Universitäts-Sternwarte, Ludwig-Maximilians-Universität München, München, Germany
- ⁵² ARTORG Center for Biomedical Engineering Research, University of Bern, Bern, Switzerland
- ⁵³ Institute for Planetary Research (PF), German Aerospace Centre (DLR), Berlin, Germany
- ⁵⁴ Université Paris-Saclay, Université Paris Cité, CEA, CNRS, AIM, Gif-sur-Yvette, France
- ⁵⁵ Laboratoire d'Astrophysique de Bordeaux, Université de Bordeaux, Pessac, France
- ⁵⁶ Département d'Astronomie, Université de Genève, Sauverny, Switzerland
- ⁵⁷ Department of Physics, Utah Valley University, Orem, UT, USA
- ⁵⁸ Department of Physics, University of Rome “Tor Vergata”, Rome, Italy
- ⁵⁹ Exzellenzcluster Origins, Garching, Germany
- ⁶⁰ Instituto de Astrofísica de Canarias (IAC), Tenerife, Spain
- ⁶¹ Astronomy Department and Van Vleck Observatory, Wesleyan University, Middletown, CT, USA
- ⁶² Department of Earth and Planetary Sciences, University of California, Riverside, CA, USA
- ⁶³ Université de Paris Cité and Univ Paris Est Creteil, CNRS, LISA, Paris, France
- †email: louis-philippe.coulombe@umontreal.ca

Close-in giant exoplanets with temperatures greater than 2,000 K (“ultra-hot Jupiters”) have been the subject of extensive efforts to determine their atmospheric properties using thermal emission measurements from the Hubble and Spitzer Space Telescopes^{1–3}. However, previous studies have yielded inconsistent results because the small sizes of the spectral features and the limited information content of the data resulted in high sensitivity to the varying assumptions made in the treatment of instrument systematics and the atmospheric retrieval analysis^{3–12}. Here we present a dayside thermal emission spectrum of the ultra-hot Jupiter WASP-18b obtained with the NIRISS¹³ instrument on JWST. The data span 0.85 to 2.85 μm in wavelength at an average resolving power of 400 and exhibit minimal systematics. The spectrum shows three water emission features (at $<6\sigma$ confidence) and evidence for optical opacity, possibly due to H^- , TiO , and VO (combined significance of 3.8σ). Models that fit the data require a thermal inversion, molecular dissociation as predicted by chemical equilibrium, a solar heavy-element abundance (“metallicity”, $\text{M}/\text{H} = 1.03^{+1.11}_{-0.51}$ x solar), and a carbon-to-oxygen (C/O) ratio less than unity. The data also yield a dayside brightness temperature map, which shows a peak in temperature near the sub-stellar point that decreases steeply and symmetrically with longitude toward the terminators.

The thermal emission spectra of ultra-hot Jupiters typically have muted spectral features and thus closely resemble blackbodies in existing narrowband measurements^{2,3}. The interpretation of these spectra has been controversial, with some studies claiming that the data are indicative of high metallicities and C/O ratios^{4,6}. Alternatively, other studies have proposed that approximately solar-composition models including the effects of molecular dissociation and continuum opacity from

the H⁺ ion can match the data^{7–10,14}. The ultra-hot Jupiter WASP-18b has been a subject of this controversy. Past Hubble and Spitzer Space Telescope secondary eclipse and phase curve observations have found high dayside temperatures^{15,16}, indicative of low heat redistribution potentially caused by magnetic drag¹⁶, weak or no spectral features from H₂O in the Hubble bandpass, and signs of a temperature inversion in the broadband Spitzer photometry^{4,7,17}. High-resolution observations of WASP-18b’s dayside have detected CO, OH, and H₂O at signal-to-noise ratios of 4.0, 4.8, and 3.3 respectively¹⁸. The molecular features were observed in emission, indicative of a thermal inversion, although the lack of a spectral continuum led to poor constraints on the temperature of the atmosphere. The metallicity and C/O ratio values retrieved from the high-resolution data are consistent with solar but also depend on the physical assumptions, with the metallicity constraints ranging from 1–100 times solar between the self-consistent and free chemistry analyses.

We observed a secondary eclipse of WASP-18b with NIRISS/SOSS¹³ as part of the JWST Transiting Exoplanet Community Early Release Science Program¹⁹. WASP-18b is a $10.4 \pm 0.4 M_J$ ultra-hot Jupiter on a 0.94 day orbit around a bright (J mag = 8.4) F6V-type star²⁰. Our goals were to characterize WASP-18b’s atmosphere and demonstrate the capabilities of JWST observations for exoplanets orbiting bright stars. We used the SUBSTRIP96 subarray mode (96 x 2048 pixels) to avoid saturation by minimizing the individual integration times. The SUBSTRIP96 mode covers the first spectral order between 0.85 and 2.85 μm . The time series spans 6.71 hours and consists of 2720 continuous integrations with 3 groups and 8.88 seconds per integration, delivering an integration efficiency of 67%. We used the F277W filter in the final ten integrations to check for contamination from background stars and found none. We observed for 2.83 hours before the eclipse, and continued for 1.70 hours after the eclipse. The observations captured 107° of WASP-18b’s orbit. Assuming it is tidally locked, the planet rotated by the same angle during the observation.

We analyzed the data using four independent pipelines: NAMELESS, nirHiss, supreme-SPOON, and transitspectroscopy (see Methods). Beginning from the raw uncalibrated data or stage 1 products, we performed custom reductions and extracted 1D spectra from each integration using either a fixed-width aperture (NAMELESS, supreme-SPOON, and transitspectroscopy) or an optimal extraction (nirHiss) technique. We put particular emphasis on the removal of $1/f$ noise (f is frequency), a signal with power spectrum inversely proportional to the frequency that is introduced through variations of the reference voltage as the detector is being read. Its removal requires careful treatment as the spectral trace covers most of the SUBSTRIP96 subarray (see Methods). Finally, we obtained spectrophotometric light curves by summing the observed flux within 408 spectral bins, each containing five pixel columns on the detector (Extended Data Fig. 1). We also produced a white-light curve by summing the spectrophotometric light curves over all wavelengths. All light curves show a sudden decrease in flux around the 1336th integration, simultaneous to a tilt event from one of the primary mirror’s segments^{21,22}. In the NIRISS data, this can be independently identified via a small but detectable morphological change in the spectral trace on the detector (Extended Data Fig. 2). We also observed small variations in the spectral trace morphology throughout the time series, mainly of its position and full width at half maximum, that are correlated with the measured flux. We detrended against these morphological changes at the fitting stage.

We analyzed the extracted white and spectrophotometric light curves by fitting the parameters for the secondary eclipse, the partial phase curve, and the systematics using ExoTEP²³ (see Methods). When fitting the white light curve, we allowed the semi-major axis and impact parameter to vary, constrained by Gaussian priors that were derived from an analysis of the full-orbit phase curve observed by the Transiting Exoplanet Survey Satellite (TESS; see Methods). We imposed a uniform prior on the mid-eclipse time and assumed a circular orbit. Those parameters were subsequently fixed when fitting the spectrophotometric bins (see Methods). The maximum star plus planet signal-to-noise (SNR) ratio for a single pixel spectrophotometric light curve is 617 at 1.14 μm , with the SNR curve closely following the shape of the throughput-weighted stellar spectrum and reaching a minimum of 62 at 2.83 μm . All four reductions yield consistent results (Extended Data Fig. 3), with all resulting thermal emission spectra being consistent at less than one standard deviation on average. The residuals for each spectrophotometric light curve closely follow the expected $1/\sqrt{n}$ (n is the number of events) scaling of Poisson noise when binned in time, and the white light curve bins down to 5 ppm over one hour timescales (see Extended Data Fig. 4).

The secondary eclipse spectrum was created by collating the planet-to-star flux ratio values at mid-eclipse for all the wavelength channels (see Fig. 1). We then multiplied by a PHOENIX stellar spectrum model²⁴ produced using previously published parameters for WASP-18 (i.e., $T_{\text{eff}} = 6435$ K, $\log g = 4.35$, and $[\text{Fe}/\text{H}] = 0.1^{25}$) to convert the dayside secondary-eclipse spectrum into the planet's thermal emission spectrum (see Fig. 1). For clarity, we also computed the brightness temperature spectrum, commonly used in planetary science, by calculating the blackbody temperature corresponding to the observed thermal emission in each wavelength bin (see Fig. 2). This transformation into brightness temperature facilitates identification of the various opacity sources by removing the large average slope caused by the behavior of the Planck emission across the NIRISS/SOSS wavelength range.

The observed brightness temperature spectrum shows strong deviations from a blackbody. It is dominated by the 1.4, 1.9, and 2.5 μm water emission features and a rise in brightness temperature shortwards of 1.3 μm . The rise in brightness is caused by the combined opacities of H^- , TiO , and VO and we infer a combined detection significance of 3.8σ for these three species (Fig. 2). All molecular features appear in emission, indicating a thermal inversion (i.e., temperature increases with altitude, see also Fig. 3). The water features are consistent with a solar-composition atmosphere, as predicted by 1D radiative-convective models and 3D general circulation models (GCMs). They are strongly inconsistent with any high C/O or high metallicity scenarios⁴ (Fig. 2b), solving the tension from past Hubble Space Telescope (HST) observations^{4,7} that obtained inconsistent results due to difference in model assumptions and the limited bandpass of HST/WFC3. This finding is further strengthened by the lack of detectable CO features at 1.6 and 2.4 μm , which should be the dominant species in a high-metallicity carbon-rich atmosphere (Fig. 2b). Using the free retrieval, we constrain the 3σ upper limit of the CO log mixing ratio to -2.42 (see below, Extended Data Fig. 5).

Quantitatively, we infer an atmospheric metallicity of $0.82^{+0.59}_{-0.37}$ times solar when fitting the NAMELESS reduction to a grid of self-consistent 1D radiative-convective models, and, consistently, $1.19^{+1.22}_{-0.67}$ times solar when allowing for a free vertical temperature structure in the chemically-consistent retrievals. Both modeling approaches accounted for the thermal dissociation of water in the upper atmosphere and assumed chemical equilibrium. In both cases the best fits are

obtained for sub-solar C/O values around 0.03–0.3, where the solar C/O value is 0.55²⁶. The self-consistent models give a 3σ upper limit of 0.2, while the free-temperature-structure retrieval allows C/O values up to 0.6 at 3σ (Fig. 3), consistent with the upper limit from high-resolution dayside thermal emission observations¹⁸. We also assessed the effect of disequilibrium chemistry (see Methods) on the observed thermal emission and found the impact to be below 10 ppm due to the short chemical timescales in this hot atmosphere, justifying the assumption of thermochemical equilibrium models. In addition, we performed a free-chemistry atmospheric retrieval^{17,27}, including the effects of thermal dissociation⁹, and inferred a H₂O deep atmospheric log mixing ratio of $-3.23^{+0.45}_{-0.29}$, consistent with the models assuming chemical equilibrium (Fig. 2c) and the solar value of -3.21²⁸. We identify a strong thermal inversion with a temperature increase of 500 K in the middle atmosphere from 1 bar to 0.01 bar, which corresponds to the pressure range covered by the contribution functions (Fig. 3a). Our best-fit radiative-convective model provides strong evidence that the temperature inversion is caused by the absorption of stellar light by TiO (see Extended Data Fig. 6). At first sight this can seem at odds with high-spectral resolution observations that have detected other species able to create thermal inversions, such as atomic iron¹⁰, but have had trouble detecting TiO²⁹. This tension is easily solved when considering that both TiO and water thermally dissociate in the upper atmospheric layers of ultra-hot Jupiters. Our observations, on the other hand, are sensitive to deeper layers of the atmosphere close to the infrared photosphere, which extends from 0.01 down to 1 bar (see contribution function on Fig. 3a), in the region where molecules such as water and TiO recombine (see Extended Data Fig. 9). Even though our model also predicts that iron can produce a thermal inversion, its near-constant abundances means that inversions due to iron happen at pressures lower than 1 millibar and not where we detect the main thermal inversion.

The precise constraints on the atmospheric metallicity and C/O, measured by probing WASP-18b's deep atmosphere which is unaffected by thermal dissociation, enable us to investigate possible formation scenarios of WASP-18b. Considering the core-accretion formation scenario³⁰, the measured atmospheric metallicity of WASP-18b, consistent with the near-solar metallicity of the host star WASP-18 ($[\text{Fe}/\text{H}] = 0.1 \pm 0.1$)^{20,31}, indicates that accretion of protoplanetary gas, rather than rocky or icy planetesimals, dominated the planet's late-stage formation. The mass-metallicity trend derived from solar system planets^{28,32–34} predicts that the metallicity decreases as the mass of the planet increases, approaching the composition of the star for the most massive planets. Our finding of solar metallicity, three times lower than that of Jupiter, is consistent with this trend, given WASP-18b's mass of $10.4 M_J$. Assuming it formed at solar metallicity, we find that up to $181 M_\oplus$ of metals could have been accreted during WASP-18b's migration before it exceeds the 2σ upper limit on the metallicity obtained from the atmospheric retrieval (see Methods). This quantity of metals almost certainly exceeds the amount that is available in the disk for accretion during migration. The metallicity that is measured for WASP-18b is therefore likely to be representative of the bulk composition of the protoplanetary disk at the planet's formation location. The low C/O ratio furthermore disfavors forming WASP-18b beyond the CO₂ ice line followed by an inward migration after the disk has dispersed, as gas accretion in that region would have led to high C/O values³⁵. Detailed spectroscopic observations of the $4.5 \mu\text{m}$ CO feature, which is found within the spectral range of JWST NIRSpec G395H, could lead to a more stringent constraint on the C/O ratio, and, thus, on WASP-18b's formation and migration history. A detailed interpretation of the atmospheric C/O ratio of WASP-18b would require knowledge of the C/O ratio of the host star. This was recently found to be significantly sub-solar ($\text{C}/\text{O} = 0.23 \pm 0.05$)³¹ based on high-resolution spectroscopy. However, stellar C/O measurements are especially challenging due to

stellar model inaccuracies and weak/blended absorption lines³⁶, so further confirmation is warranted.

Another possible formation scenario for WASP-18b is through collapse of the disk from gravitational instability³⁷ with a disk-free migration. This process leads to an atmospheric metallicity and C/O dictated by the local disk composition, and is expected to result in planets with stellar-to-super-stellar metallicities and sub-stellar-to-stellar C/O³⁸, in agreement with our results.

In addition to the extracted planetary spectrum and the elemental abundances, we also recover the broadband brightness temperature distribution across WASP-18b's dayside using the eigencurves eclipse-mapping method (see Methods and refs.^{39–41}). We begin this analysis with the systematics-corrected white-light curve. We performed two independent applications of the method, both enforcing positive flux contribution from visible locations on the planet. We find two brightness map solutions which fit the data similarly well (Fig. 4). We convert brightness maps to brightness temperature maps assuming a PHOENIX spectrum⁴² for the star at 6432 ± 48 K, $\log g = 4.35 \pm 0.05$ ²⁵, and $R_p/R_s = 0.09783 \pm 0.00028$ (Extended Data Table 1). The first solution (blue model) shows a brightness temperature plateau stretching from approximately -40° to $+40^\circ$ of longitude relative to the substellar point, with a virtually constant latitudinally averaged brightness temperature of 3124^{+35}_{-5} K. The second solution (red model) shows a more concentrated hot spot at the substellar point with a maximum brightness temperature of 3272^{+9}_{-12} K and a consistent decrease in temperature both eastward and westward of the substellar point. Both solutions consistently reveal a steep temperature drop with longitude toward the terminators, with the inferred brightness temperature falling to 1913^{+87}_{-27} K at the western terminator and 2129^{+63}_{-11} K at the eastern terminator (blue model), and neither shows any significant shift of the brightest region away from the substellar point. This is consistent with what was measured from the HST phase curve of WASP-18b¹⁶. The high temperatures covering most of the dayside in both solutions, along with the steep decrease in temperature near the limbs, are consistent with the atmospheric retrieval results (Fig. 3d).

Beyond the terminators and leading to the nightside, we infer a continued drop in the thermal emission. Our JWST observations have the sensitivity to probe part of the night side because the planet rotates by 107° during the time series, providing a view of up to 62.5° of the night side east of the eastern terminator at the beginning and ending 44.5° west away from the western terminator. The lack of a significant hot-spot offset and the large center-to-limb brightness temperature contrast suggest heat transport by winds moving radially away from the sub-stellar point and toward the nightside, rather than redistributing heat to the nightside through the formation of an equatorial jet^{43,44}. Lorentz forces are expected to play an important role in atmospheric dynamics of ultra-hot Jupiters, due to their high dayside temperatures^{44–46}. Thermally ionized alkali metals coupled to an internal dynamo-driven planetary magnetic field interact with the neutral species and are expected to prevent the formation of an eastward equatorial jet⁴⁷. By approximating the effects of the Lorentz force as a locally calculated magnetic drag force in GCMs⁴⁸ (see Methods), we find that the observed white-light curve is best explained by an internal planetary field strength of 5 G or larger, as this field strength is sufficient to prevent a discernible longitudinal shift of the hot spot from the substellar point (Fig. 4). This is further confirmed by a separate GCM considering spatially uniform drag timescales, for which we find that the case with the highest drag strength ($\tau_{\text{drag}} = 10^3$ s) produces white-light curves that best fit the observations (Fig. 4, Extended Data Fig. 7). Furthermore, self-consistent magnetohydrodynamic (MHD) models of ultra-hot Jupiters

considering the response of the magnetic field to the circulation have shown the possibility of time variability in the longitudinal hot spot offset, oscillating between the western and eastern hemispheres over timescales of 10–100 days^{49,50}, but additional observations are needed to test this possibility.

The large wavelength coverage and high spectral and photometric precision of JWST's NIRISS/SOSS mode present many opportunities for the study and detailed characterization of atmospheric processes through thermal emission spectroscopy. Furthermore, planets with high signal to noise eclipses such as WASP-18b allow for the three-dimensional mapping of their atmospheres to retrieve the temperature structure across the dayside as well as variations in properties such as molecular abundances^{40,41}. JWST will enable these measurements for most bright transiting exoplanets, giving rise to the possibility of studying the dynamics and chemistry of a wide range of exoplanets directly from secondary eclipse observations.

1. Baxter, C. *et al.* A transition between the hot and the ultra-hot Jupiter atmospheres. *Astronomy & Astrophysics* **639**, A36 (2020).
2. Mansfield, M. *et al.* A unique hot Jupiter spectral sequence with evidence for compositional diversity. *Nature Astronomy* **5**, 1224–1232 (2021).
3. Changeat, Q. *et al.* Five Key Exoplanet Questions Answered via the Analysis of 25 Hot-Jupiter Atmospheres in Eclipse. *The Astrophysical Journal Supplement Series* **260**, 3 (2022).
4. Sheppard, K. B. *et al.* Evidence for a Dayside Thermal Inversion and High Metallicity for the Hot Jupiter WASP-18b. *The Astrophysical Journal Letters* **850**, L32 (2017).
5. Evans, T. M. *et al.* An ultrahot gas-giant exoplanet with a stratosphere. *Nature* **548**, 58–61 (2017).
6. Cartier, K. M. S. *et al.* Near-infrared Emission Spectrum of WASP-103b Using Hubble Space Telescope/Wide Field Camera 3. *The Astronomical Journal* **153**, 34 (2017).
7. Arcangeli, J. *et al.* H- Opacity and Water Dissociation in the Dayside Atmosphere of the Very Hot Gas Giant WASP-18b. *The Astrophysical Journal* **855**, L30 (2018).
8. Kreidberg, L. *et al.* Global Climate and Atmospheric Composition of the Ultra-hot Jupiter WASP-103b from HST and Spitzer Phase Curve Observations. *The Astronomical Journal* **156**, 17 (2018).
9. Parmentier, V. *et al.* From thermal dissociation to condensation in the atmospheres of ultra hot Jupiters: WASP-121b in context. *Astronomy & Astrophysics* **617**, A110 (2018).
10. Lothringer, J. D., Barman, T. & Koskinen, T. Extremely Irradiated Hot Jupiters: Non-oxide Inversions, H- Opacity, and Thermal Dissociation of Molecules. *The Astrophysical Journal* **866**, 27 (2018).

11. Gandhi, S., Madhusudhan, N. & Mandell, A. H- and Dissociation in Ultra-hot Jupiters: A Retrieval Case Study of WASP-18b. *The Astronomical Journal* **159**, 232 (2020).
12. Mikal-Evans, T. *et al.* Confirmation of water emission in the dayside spectrum of the ultrahot Jupiter WASP-121b. *Monthly Notices of the Royal Astronomical Society* **496**, 1638–1644 (2020).
13. Doyon, R. *et al.* The JWST Fine Guidance Sensor (FGS) and Near-Infrared Imager and Slitless Spectrograph (NIRISS). in *Space Telescopes and Instrumentation 2012: Optical, Infrared, and Millimeter Wave* vol. 8442 1005–1017 (SPIE, 2012).
14. Mansfield, M. *et al.* An HST/WFC3 Thermal Emission Spectrum of the Hot Jupiter HAT-P-7b. *The Astronomical Journal* **156**, 10 (2018).
15. Maxted, P. F. L. *et al.* Spitzer 3.6 and 4.5 μm full-orbit light curves of WASP-18. *Monthly Notices of the Royal Astronomical Society* **428**, 2645–2660 (2013).
16. Arcangeli, J. *et al.* Climate of an ultra hot Jupiter: Spectroscopic phase curve of WASP-18b with HST/WFC3. *Astronomy & Astrophysics* **625**, A136 (2019).
17. Gandhi, S., Madhusudhan, N. & Mandell, A. H- and Dissociation in Ultra-hot Jupiters: A Retrieval Case Study of WASP-18b. *The Astronomical Journal* **159**, 232 (2020).
18. Brogi, M. *et al.* The roasting marshmallows program with IGRINS on gemini south i: Composition and climate of the ultra hot jupiter WASP-18 b. (2022) doi:10.48550/ARXIV.2209.15548.
19. Bean, J. L. *et al.* The Transiting Exoplanet Community Early Release Science Program for JWST. *Publications of the Astronomical Society of the Pacific* **130**, 114402 (2018).
20. Hellier, C. *et al.* An orbital period of 0.94days for the hot-Jupiter planet WASP-18b. *Nature* **460**, 1098–1100 (2009).
21. Rigby, J. *et al.* Characterization of JWST science performance from commissioning. *arXiv e-prints* arXiv:2207.05632 (2022).
22. Alderson, L. *et al.* Early Release Science of the Exoplanet WASP-39b with JWST NIRSpec G395H. *Nature* (2023) doi:10.1038/s41586-022-05591-3.
23. Benneke, B. *et al.* Water Vapor and Clouds on the Habitable-zone Sub-Neptune Exoplanet K2-18b. *The Astrophysical Journal Letters* **887**, L14 (2019).
24. Jack, D., Hauschildt, P. H. & Baron, E. Time-dependent radiative transfer with PHOENIX. *Astronomy & Astrophysics* **502**, 1043–1049 (2009).
25. Cortés-Zuleta, P. *et al.* TraMoS - V. Updated ephemeris and multi-epoch monitoring of the hot Jupiters WASP-18Ab, WASP-19b, and WASP-77Ab. *Astronomy & Astrophysics* **636**, A98 (2020).
26. Asplund, M., Grevesse, N., Sauval, A. J. & Scott, P. The Chemical Composition of the Sun. *Annual Review of Astronomy and Astrophysics* **47**, 481–522 (2009).

27. Piette, A. A. A. & Madhusudhan, N. Considerations for atmospheric retrieval of high-precision brown dwarf spectra. *Monthly Notices of the Royal Astronomical Society* **497**, 5136–5154 (2020).
28. Kreidberg, L. *et al.* A PRECISE WATER ABUNDANCE MEASUREMENT FOR THE HOT JUPITER WASP-43b. *The Astrophysical Journal* **793**, L27 (2014).
29. Guillot, T. *et al.* *Giant Planets from the Inside-Out*. <https://ui.adsabs.harvard.edu/abs/2022arXiv220504100G> (2022).
30. Pollack, J. B. *et al.* Formation of the Giant Planets by Concurrent Accretion of Solids and Gas. *Icarus* **124**, 62–85 (1996).
31. Polanski, A. S., Crossfield, I. J. M., Howard, A. W., Isaacson, H. & Rice, M. Chemical abundances for 25 JWST exoplanet host stars with KeckSpec. (2022) doi:10.48550/ARXIV.2207.13662.
32. Lodders, K. & Fegley, B. *The planetary scientist's companion* / Katharina Lodders, Bruce Fegley. (1998).
33. Wakeford, H. R. *et al.* HAT-P-26b: A Neptune-mass exoplanet with a well-constrained heavy element abundance. *Science* **356**, 628–631 (2017).
34. Welbanks, L. *et al.* Mass-metallicity trends in transiting exoplanets from atmospheric abundances of H₂O, Na, and K. *The Astrophysical Journal Letters* **887**, L20 (2019).
35. Öberg, K. I., Murray-Clay, R. & Bergin, E. A. THE EFFECTS OF SNOWLINES ON c/o IN PLANETARY ATMOSPHERES. *The Astrophysical Journal* **743**, L16 (2011).
36. Bedell, M. *et al.* The Chemical Homogeneity of Sun-like Stars in the Solar Neighborhood. *The Astrophysical Journal* **865**, 68 (2018).
37. Boss, A. P. Giant planet formation by gravitational instability. *Science* **276**, 1836–1839 (1997).
38. Madhusudhan, N., Amin, M. A. & Kennedy, G. M. Toward Chemical Constraints on Hot Jupiter Migration. *The Astrophysical Journal Letters* **794**, L12 (2014).
39. Rauscher, E., Suri, V. & Cowan, N. B. A More Informative Map: Inverting Thermal Orbital Phase and Eclipse Light Curves of Exoplanets. *The Astronomical Journal* **156**, 235 (2018).
40. Mansfield, M. *et al.* Eigenspectra: A framework for identifying spectra from 3D eclipse mapping. *Monthly Notices of the Royal Astronomical Society* **499**, 5151–5162 (2020).
41. Challener, R. C. & Rauscher, E. THERESA: Three-dimensional Eclipse Mapping with Application to Synthetic JWST Data. *The Astronomical Journal* **163**, 117 (2022).
42. Husser, T.-O. *et al.* A new extensive library of PHOENIX stellar atmospheres and synthetic spectra. *Astronomy & Astrophysics* **553**, A6 (2013).

43. Komacek, T. D. & Showman, A. P. Atmospheric Circulation of Hot Jupiters: Dayside-Nightside Temperature Differences. *The Astrophysical Journal* **821**, 16 (2016).
44. Komacek, T. D., Showman, A. P. & Tan, X. Atmospheric Circulation of Hot Jupiters: Dayside-Nightside Temperature Differences. II. Comparison with Observations. *The Astrophysical Journal* **835**, 198 (2017).
45. Perna, R., Menou, K. & Rauscher, E. MAGNETIC DRAG ON HOT JUPITER ATMOSPHERIC WINDS. *The Astrophysical Journal* **719**, 1421–1426 (2010).
46. Batygin, K., Stanley, S. & Stevenson, D. J. MAGNETICALLY CONTROLLED CIRCULATION ON HOT EXTRASOLAR PLANETS. *The Astrophysical Journal* **776**, 53 (2013).
47. Menou, K. Magnetic scaling laws for the atmospheres of hot giant exoplanets. *The Astrophysical Journal* **745**, 138 (2012).
48. Beltz, H., Rauscher, E., Roman, M. T. & Guilliat, A. Exploring the Effects of Active Magnetic Drag in a General Circulation Model of the Ultrahot Jupiter WASP-76b. *The Astronomical Journal* **163**, 35 (2021).
49. Rogers, T. Constraints on the magnetic field strength of HAT-P-7b and other hot giant exoplanets. *Nature Astronomy* **1**, 131 (2017).
50. Hindle, A. W., Bushby, P. J. & Rogers, T. M. Observational Consequences of Shallow-water Magnetohydrodynamics on Hot Jupiters. *The Astrophysical Journal Letters* **916**, L8 (2021).

Fig. 1 | Dayside thermal emission spectrum of WASP-18b. **a**, Observed dayside planet-to-star flux ratio spectrum (black points) and their 1σ error bars, binned at a fixed resolving power of $R = 50$ for visual clarity. Past HST⁷ (red points), TESS (see Methods), and Spitzer¹⁵ (gray points) are shown for comparison. We show the best-fit model (blue line) from the SCARLET chemical equilibrium retrieval, extrapolated to the TESS and Spitzer wavelengths considering the same atmospheric parameters. We find that the measured spectrum is in good agreement with the past HST observations. The throughput-integrated model is shown for the TESS and Spitzer points (blue points). The white (broadband) light curve (white points) and three example spectrophotometric light curves (blue, green, and orange points at 1.05, 1.72, and 2.77 μm respectively), along with their best fitting models (black line), are shown to scale. The phase variation of the measured planetary flux around the secondary eclipse is clearly visible. **b**, Planetary thermal emission spectrum of WASP-18b, as computed from the F_p/F_s spectrum and the PHOENIX stellar spectrum. The shortest wavelengths of the NIRISS/SOSS first order reach the maximum of the planetary spectral energy distribution, thereby enclosing 65% of the total thermal energy emitted by the planet. Blackbody spectra for temperatures $T = 2850$ (dotted), 2950 (dash-dotted), and 3050 K (dashed) are shown in purple, with the best-fitting blackbody spectrum to the NIRISS data being $T = 2950 \pm 3$ K.

Fig. 2 | Brightness temperature spectrum of WASP-18b. **a**, Brightness temperature of WASP-18b as a function of wavelength, with models extrapolated to the TESS and Spitzer points considering the same atmospheric parameters. All data are plotted with their 1σ error bars. The H_2O emission features at 1.4, 1.9, and 2.5 μm are clearly visible. The rise in brightness temperature observed in the water features is indicative of a thermal inversion. We also observe a downward slope in the spectrum from 0.8–1.3 μm as the opacities of H^- , TiO , and VO decrease. We find that the precision of the observations at 2.4 μm is not sufficient to detect the small expected contribution from CO . **b**, Comparison of the high M/H and C/O case⁴ (red) as well as the solar metallicity case with H^- opacity and H_2O dissociation⁷ (brown, best-fit to the HST data shown in Fig. 1) that could both explain the past HST observations. We also show the SCARLET best-fit model to the NIRISS observations (blue). **c**, Median fits of the free chemistry retrieval (orange) and of the self-consistent chemical equilibrium grid retrieval (green). We also show the dayside spectra obtained by post-processing the SPARC/MITgcm (purple) and RM-GCM (green) for a drag timescale of $\tau_{\text{drag}} = 10^3$ s and a magnetic field strength of $B = 20$ G respectively. We find that the SPARC/MITgcm better reproduces the observed features as the RM-GCM is more isothermal.

Fig. 3 | Atmospheric constraints from the chemical equilibrium and free chemistry retrievals. **a**, Retrieved temperature-pressure profiles with 1 and 2 σ contours for the chemical equilibrium with free temperature-pressure profile (blue), radiative-convective thermochemical equilibrium (1D-RCTE, red), and free chemistry with thermal dissociation (green) retrievals. The retrieved temperature-pressure profiles are consistent between the retrievals and show an inversion in the pressure range that is constrained from the observations, as shown by the contribution functions at 0.85 (dot-dashed gray line), 1.82 (dashed brown line), and 2.83 μm (orange line). The temperature-pressure profile of WASP-18b is above the CaTiO_3 condensation curve¹⁶⁵ (black dashed line) at almost all pressures, which motivates the presence of a temperature inversion caused by TiO as Ti is available in gas form. The dayside average temperature-pressure profile of the $\tau_{\text{drag}} = 10^3$ s SPARC/MITgcm (white dashed line) is computed from the viewing angle average of $T(\text{P})^4$ and shown for comparison. We also show the posterior probability distributions of the atmospheric metallicity $[\text{M}/\text{H}]$ (**b**), C/O ratio (**c**), and area fraction A_{HS} (**d**). The area fraction A_{HS} is a scaling factor applied to the thermal emission spectrum to compensate for the possible presence of a concentrated hot spot contributing to most of the observed emission⁹⁷. All methods retrieve metallicities consistent with solar at 1σ . The retrieved C/O 3σ upper limits are of 0.6 and 0.2 for the chemical equilibrium with free temperature-pressure profile and the 1D-RCTE retrievals respectively. Finally, we find the area fraction A_{HS} is consistent with 1 when allowing the temperature-pressure profile to vary freely, indicating the lack of a concentrated hot spot on the dayside contributing to the majority of the observed emission.

Fig. 4 | Retrieved temperature map of WASP-18b. **a**, Latitudinally-averaged brightness temperatures (see Methods) of the planet along the equator. The blue and red shaded areas show solutions for $l_{\text{max}} = 5$, $N = 5$ and $l_{\text{max}} = 2$, $N = 5$ (see Methods), respectively. The effective broadband wavelength of the map, weighted by the observed flux ($F_p + F_s$) and instrument response, is $\lambda = 1.27$ μm . Statistically, the blue model is marginally preferred. Dark, medium, and light shading denote the 1, 2, and 3 σ confidence regions respectively, showing the range of model

possibilities. Overplotted are several predictions from general circulation models with magnetic-field¹⁶⁴ (green) or uniform¹⁵⁶ (purple) drag timescales (see Methods). The plot only shows longitudes emitting at least 10% of the substellar flux. **b**, The temperature map of WASP-18b for the $l_{max} = 5$, $N = 5$ solution. Along the equator at -90° , 0° , and 90° longitude the temperatures are 1744 K, 3121 K, and 2009 K, respectively. **c**, The colorbar for the map shown in **b**. Color represents the brightness temperature and saturation represents the relative contribution to the light curve based on its visibility.

Methods

NIRISS/SOSS Reduction and Spectrophotometric Extraction.

We perform four separate reductions of the NIRISS/SOSS¹³ (Doyon et al. submitted, Albert et al. submitted) eclipse observations of WASP-18b using the NAMELESS, nirHiss⁵¹, supreme-SPOON⁵², and transitspectroscopy⁵³ pipelines for inter-comparison of individual reduction steps⁵⁴. All pipelines are built around the official STScI jwst reduction pipeline⁵⁵ with the addition of custom correction steps for systematics such as $1/f$ noise, zodiacal background, and cosmic rays. Reductions are performed from either the raw uncalibrated data (NAMELESS, nirHiss, and supreme-SPOON) or stage 1 (transitspectroscopy) products up to the extraction of the spectrophotometric light curves.

NAMELESS Reduction

We use the NAMELESS pipeline⁵⁴ to reduce the WASP-18 b observations from the uncalibrated data products through spectral extraction. We used the jwst pipeline version 1.6.0, CRDS (Calibration Reference Data System) version 11.16.5, and CRDS context jwst_0977.pmap for the reduction. First, we go through all steps of the jwst pipeline Stage 1, with the exception of the dark_current step. We skip the dark subtraction step to avoid introducing additional noise due to the lack of a high-fidelity reference file. After the ramp-fitting step, we go through the assign_wcs, srctype, and flat_field steps of the jwst pipeline Stage 2; we skip the background step and apply our own custom routine for handling the background. We skip the pathloss and photom steps, as an absolute flux calibration is not needed. We perform outlier detection by computing the product of the second derivatives in the column and row directions for all frames⁵⁴. We divide the frames into windows of 4×4 pixels, where we then compute the local median and standard deviation of the second derivative. We flag all pixels that are $\geq 4\sigma$ away from the window median. Furthermore, we flag pixels that show null or negative counts. All flagged pixels are set equal to the local median of their window. We correct for background systematics using the following routine. First, we identified section ($x \in [5, 400]$, $y \in [0, 20]$) as the region of the SUBSTRIP96 sub-array where the contribution from the spectral orders to the counts is minimal. Next, we compute the scaling factor between the median frame and the model background provided on the STScI JDox User Documentation⁵⁶ within the aforementioned region. We consider the 16th percentile of the distribution as the scaling value and subtract the scaled background from all integrations. We pay close attention to the $1/f$ correction for these observations, as the magnitude of the spectral trace variation is highly wavelength-dependent in the secondary eclipse. Therefore, we consider all columns independently when scaling the trace to compute the $1/f$ noise. Furthermore, we treat

this correction in two parts as we observe a tilt event^{21,22} around the 1336th integration (Extended Data Fig. 2), possibly due to a sudden movement in one of the primary mirror's segments, resulting in a change in the morphology of the trace that manifests as a sudden decrease in flux. First, we compute the median columns \bar{c} before and after the tilt event; we use integrations 300–900 and 1350–1900. Then, we define a given column j and row k at an integration i as the sum of the scaled median column $m_{i,j}\bar{c}_{j,k}$ and the 1/f noise $n_{i,j} = c_{i,j,k} - m_{i,j}\bar{c}_{j,k}$. Using the errors $\epsilon_{i,j,k}$ returned by the jwst pipeline, we solve for the values of $m_{i,j}$ and $n_{i,j}$ that minimize the chi-square between the observed and the scaled columns $\chi^2 = \sum_k [(c_{i,j,k} - m_{i,j}\bar{c}_{j,k} - n_{i,j})/\epsilon_{i,j,k}]^2$. These values of the scaling $m_{i,j}$ and 1/f noise $n_{i,j}$ are obtained by imposing $\partial\chi^2/\partial m_{i,j}, \partial\chi^2/\partial n_{i,j} = 0$, such that

$$m_{i,j} = \frac{\sum_k \frac{\bar{c}_{j,k}}{\epsilon_{i,j,k}^2} \left(\sum_k \frac{1}{\epsilon_{i,j,k}^2} \right)^{-1} \sum_k \frac{c_{i,j,k}}{\epsilon_{i,j,k}^2} - \sum_k \frac{c_{i,j,k}\bar{c}_{j,k}}{\epsilon_{i,j,k}^2}}{\left(\sum_k \frac{\bar{c}_{j,k}}{\epsilon_{i,j,k}^2} \right)^2 \left(\sum_k \frac{1}{\epsilon_{i,j,k}^2} \right)^{-1} - \sum_k \left[\frac{\bar{c}_{j,k}}{\epsilon_{i,j,k}} \right]^2}$$

and

$$n_{i,j} = \sum_k \frac{c_{i,j,k}}{\epsilon_{i,j,k}^2} \left(\sum_k \frac{1}{\epsilon_{i,j,k}^2} \right)^{-1} - m_{i,j} \sum_k \frac{\bar{c}_{j,k}}{\epsilon_{i,j,k}^2} \left(\sum_k \frac{1}{\epsilon_{i,j,k}^2} \right)^{-1}.$$

We then subtract the measured values of $n_{i,j}$ from all columns and integrations. We set the error $\epsilon_{i,j,k}$ to ∞ (where ∞ here is defined as the IEEE 754 floating point representation of positive infinity) for all pixels that have non-zero data quality flags returned by the jwst pipeline such that they are not considered in the fit of the 1/f noise. We also set the errors to ∞ in the region $x \in [76, 96]$, $y \in [530, 1350]$ of the detector, where a portion of the second spectral order is visible. This is appropriate treatment as the 1/f noise scales independently across each order due to the difference in wavelength coverage. After correction of the 1/f noise, we trace the location of Order 1 on the detector by computing the maximum of the trace convolved with a Gaussian filter for all columns. We further smooth the positions of the trace centroids using a spline function. Finally, we perform a box spectral extraction of the first order using the `transitspectroscopy.spectroscopy.getSimpleSpectrum` routine with an aperture diameter of 30 pixels.

nirHiss Reduction

We use the nirHiss Python open-source data reduction pipeline as described in Feinstein et al. (2023)⁵⁴. To summarize, this pipeline uses Eureka!⁵⁷ to go from the Stage 0 JWST outputs to Stage 2 calibration, which applies detector-level corrections, produces count rate images, and calibrates individual exposures. From the Stage 2 “calints” FITS files, we use nirHiss to correct for background sources, 1/f noise, cosmic ray removal, trace identification, and spectral extraction. We follow two steps for trace identification. First, we use the (x,y) position of the trace from the “jwst_niriss_spectrace_0022.fits” reference file, with y-values offset by ~ 25 pixels, to identify Order 2. We mask this region, such that it does not contaminate the trace identification or

background routine later on. Next, we use the `nirHiss.tracing.mask_method_edges` function. This technique identifies the edges of Order 1 using a canny edge detection method from `scikit-image`, an open-source image processing package⁵⁸. This method uses the derivative of a Gaussian function in order to identify regions with the maximum gradient. From this step, the potential edges are narrowed down to 1-pixel curves along the maxima. This results in an image where the outline of Order 1 is presented. We identify the median location along the column from the top and bottom edges of Order 1, and smooth the trace by fitting a 4th-order polynomial. We find a 4th-order polynomial best fits the overall shape of both orders, while a 6th-order polynomial over-fits and a 2nd-order polynomial under-fits the order profile. We use the trace to mask the location of Order 1 when stepping through the `nirHiss` background routines. For background treatment, we follow a similar method presented in Feinstein et al. (2023)⁵⁴, namely we identify a region without significant contamination from the spectral trace, and scale this region to the same region on the model background on the STScI JDox User Documentation. We use the region $x \in [4, 250]$ and $y \in [0, 30]$ and find an average scaling factor of 0.6007. We apply this scaling factor to the model background and subtract it from all integrations. Next, we remove 1/f noise in a similar manner to transitspectroscopy and scale this 1/f noise treatment to the out-of-eclipse integrations (0 – 1250 and 1900 – 2500). We remove cosmic rays using the L.A. Cosmic technique⁵⁹. Finally, we extract the spectra using the optimal extraction routine, which is a robust means to simultaneously remove additional bad pixels/cosmic ray events while placing non-uniform weighting on each pixel in order to negate distortion produced by the spatial profile⁶⁰. We use a normalized median image to best capture the unique NIRISS/SOSS spatial profile.

supreme-SPOON Reduction

We follow a similar approach with supreme-SPOON as presented in Feinstein et al. (2023)⁵⁴. We start from the raw uncalibrated data files, which we downloaded from the MAST archive, and process them through the supreme-SPOON Stage 1, which performs the detector level calibrations including superbias subtraction, saturation flagging, jump detection, and ramp fitting. As with the previous pipelines, we do not perform any dark current subtraction. supreme-SPOON additionally treats the 1/f noise at the group level. This is done by subtracting a median stack of all in-eclipse integrations, scaled to the flux level of each individual integration via the white light curve, to create a difference image revealing the characteristic 1/f striping. A column-wise median of the n^{th} difference image is then subtracted from the corresponding integration. supreme-SPOON also removes the zodiacal background signal directly before the 1/f correction step by scaling the SUBSTRIP96 SOSS background model provided by the STScI to the flux level of each integration, as is described in Feinstein et al. (2023)⁵⁴. We then pass the Stage 1 processed files through supreme-SPOON Stage 2, which performs additional calibrations such as flat fielding and hot pixel interpolation. We extract the stellar spectra at the pixel level using a simple box aperture extraction with a width of 30 pixels centered on the order 1 trace, as the dilution resulting from the order overlap with the second order has been shown to be negligible^{61,62}. The y-pixel positions of the trace are determined via the `edgetrigger` algorithm⁶². We find that the extracted trace positions match with those measured during commissioning and included in the spectrace reference file, and we therefore use the default JWST wavelength solution.

transitspectroscopy Reduction

We follow a similar approach adopted by the transitspectroscopy pipeline discussed in Feinstein et al. (2023)⁵⁴. This reduction starts from the `_rateints.fits` files that were processed by the `jwst`

pipeline from STScI. We scaled the zodiacal background model provided on STScI JDOx User Documentation to the observed two-dimensional spectra in the box delimited by pixels $x \in [10, 250]$ and $y \in [10, 30]$. The scaled background is then subtracted from each integration. In summary, the procedure to remove the $1/f$ noise is as follows: We take the median of all integrations and subtract it from each integration, which leaves predominantly the $1/f$ noise. We then take the column-by-column median of this residual noise, considering only the pixels that are 20 pixels away from the center of the trace, and assume it is representative of the structure of the $1/f$ noise of the images. These values are then subtracted from each column. For the spectral extraction, we used the `transitspectroscopy.spectroscopy.getSimpleSpectrum` routine with an aperture width of 30 pixels. We removed the outliers of the extracted spectra caused by cosmic rays or deviating pixels by taking the combined median of all spectra and flagging outlier points that deviate by more than 5σ from this median spectrum. The flagged wavelength bins are then corrected by taking the mean of the neighboring bins.

Spectrophotometric Light Curve Creation.

From the aforementioned stellar spectral extraction pipelines, we create and fit models to the spectrophotometric light curves $F(t, \lambda)$. The light curves are composed of three distinct signals: the planetary flux throughout partial phase curve and eclipse F_p , the stellar flux F_* , and the systematics S , which we model as a function of time t and wavelength λ via equation 3.

$$F(t, \lambda) = S(t, \lambda) \left[\frac{F_p(t, \lambda, \theta)}{F_*(t, \lambda)} + 1 \right]$$

As the main scientific quantity of interest is the planetary signal $F_p(t, \lambda, \theta)$, where θ represents the planetary orbital parameters, we aim to properly characterize and correct for the stellar flux and systematics. Light curve fitting is performed in two separate steps: (I) we fit the white light curve (II) we run individual fitting for each spectrophotometric bin. The values of the orbital parameters obtained from the white light curve are fixed in the spectrophotometric light curves. The following sections describe our treatment of the planetary flux $F_p(t, \lambda, \theta)$, the stellar variability $F_*(t, \lambda)$, and the systematics $S(t, \lambda)$.

Light Curve Component I: Planetary Flux

Despite the fact that the main target of these observations was the secondary eclipse of WASP-18 b, we also capture a portion of its phase curve during the before- and after-eclipse baseline. Over the course of the observations, the planet rotates 107° , revealing significant information on the spatial distribution of its atmosphere. To model the planetary flux in time, we consider a second-order harmonic function

$$F_p(t, \lambda, \theta) = f(t, \theta) \sum_{n=1}^2 \left[F_n + F_n \cos \left(\frac{2\pi n}{P} [t - t_n(\lambda)] \right) \right],$$

where $0 \leq f(t, \theta) \leq 1$ is the time-dependent, visible fraction of the planetary projected disk as a function of the orbital parameters θ and P is the orbital period. The harmonics consist of a term describing the semi-amplitude F_n of the planetary flux variation, as well as the time t_n where the harmonic reaches its maximum. The visible fraction is computed using the normalized secondary

eclipse light curve modeled with the batman python package⁶³. The second-order harmonic function provides sufficient precision for the noise floor of the JWST⁶⁴. We fit for the orbital parameters that dictate the shape and duration of the eclipse: the time of superior conjunction T_{sec} (U[2459802.78, 2459802.98]), the impact parameter b (N[0.360, 0.026²]), as well as the semi-major axis to stellar radius ratio a/R_* (N[3.496, 0.029²]). The normal priors considered for the semi-major axis and impact parameter use the median and 1σ uncertainties of the constraints obtained from TESS (see Extended Data Table 1) as the center and standard deviation of the priors. Those priors are used because of the precise constraints obtained from the multiple TESS transits and they are free from correlations with a potentially non-uniform dayside, as opposed to our secondary eclipse light curve. We opt to keep a/R_* and b free rather than fixing them to the TESS values to ensure that the other parameters retrieved from the white light curve fit are marginalized over the TESS uncertainties. We assume the orbit to be circular, which is justified by the TESS analysis as it finds a strong Bayesian Information Criterion⁶⁵ (BIC) and Aikake Information Criterion⁶⁶ (AIC) preference for the non-eccentric orbit. Given the close proximity of WASP-18b to its host star, strong tidal interactions lead to the ellipsoidal deformation of the planet and its host. Past studies have shown that this deformation for WASP-18b is of $\sim 2.5 \times 10^{-3} R_p$, leading to a variation of the flux of order unity ppm, and is thus negligible^{16,67}. Finally, near the lower end of the first order (0.85 μm), there is also a contribution to the observed flux from the stellar light reflected by WASP-18b. However, the upper limits of the geometric albedo ($A_g < 0.048$ ⁶⁸ and $A_g = 0.025 \pm 0.027$ ⁶⁹) obtained from TESS correspond to a reflected light contribution of < 35 ppm near 0.8 μm . We therefore do not consider a specific term for the reflected light and instead assume that this will be fit by the second-order harmonic function.

Light Curve Component II: Stellar Variability

We consider three phenomena that can lead to temporal changes in the observed stellar flux: stellar activity, A , ellipsoidal variations, E , and Doppler boosting, D . Stellar activity, generally caused by the presence and movement of star spots on the stellar hemisphere visible to the observer, leads to variations in the observed stellar spectrum on a timescale that is of the order of the stellar rotation period. Past observations of WASP-18 have constrained this period to be $P_{rot} \sim 5.5$ days⁷⁰. Despite this relatively short period with respect to stars of similar physical properties (e.g., the effective temperature, T_{eff} , and luminosity, L_\odot)⁷¹, the star shows abnormally low activity in the UV and X-ray domains, possibly due to tidal interactions with WASP-18b disrupting its dynamo^{72–74}. As we expect the rotational modulation to be on a relatively long timescale compared to our observations and its amplitude to be quite low, we do not directly fit this term and instead assume it to be handled by the systematics model. As for the ellipsoidal variation and Doppler boosting, they are both caused by the influence of WASP-18b on its host star. Although the ellipsoidal deformation of WASP-18b leads to a negligible impact on the phase curve, the same is not true for its host. The stellar ellipsoidal effect, with maxima fixed at quadrature when the projected area is at its highest, is found to be of semi-amplitude 172.2 ppm from the TESS analysis. Following previous analyses of HST observations¹⁶, we consider ellipsoidal variation to be achromatic and fix its amplitude to the TESS value for the full NIRISS/SOSS wavelength range. The Doppler boosting effect is a result of the Doppler shift of the stellar spectral energy distribution as its radial velocity varies throughout its orbit. We fix this amplitude to 21.8 ppm, with the maximum at phase 0.25, as done in Arcangeli et al. (2019)¹⁶. The observed stellar flux is therefore described as the sum of the ellipsoidal variation and Doppler boosting to the mean stellar flux in time $\bar{F}_*(\lambda)$.

$$F_*(t, \lambda) = \bar{F}_*(\lambda) - D \sin\left(\frac{2\pi}{P}[t - T_{sec}]\right) - E \cos\left(\frac{4\pi}{P}[t - T_{sec}]\right)$$

Light Curve Component III: Systematics Model

The white and spectrophotometric light curves show two distinct important systematics: a sudden drop in flux caused by a tilt event shortly after the beginning of full-eclipse as well as high-frequency variations in the flux throughout the observations caused by small changes in the morphology of the trace. We track the trend of these systematics throughout the observations by performing incremental principal components analysis (IPCA) with the open-source scikit-learn⁷⁵ package on the processed detector images (Extended Data Fig. 2). The first principal component is the tilt event, which we use to determine the exact integration where it occurs. We handle the tilt event in the white and spectrophotometric light curves by fitting for an offset in flux for the data after the 1336th integration. We also observe two principal components analogous to the y-position and full width at half maximum (FWHM) of the trace in time. We find that these two components are correlated to short-frequency variations in the light curves and therefore detrend linearly against them at the fitting stage. We find that, despite having a lower variance than the y-position, the variation of the FWHM has a larger effect on the light curves when using box extraction. Finally, we fit for a linear trend in time to account for any further potential stellar activity and instrumental effect.

We note that considering a second order polynomial trend or higher in time for the systematics results in significant correlation with the partial phase curve information. However, a linear trend systematics model has been found sufficient to fit past NIRISS/SOSS observations (Feinstein et al. (2023)⁵⁴, Radica et al. submitted). Furthermore, we find that the curvature around the secondary eclipse increases monotonically with wavelength, which is expected from the planetary signal and inconsistent with stellar activity as well as instrumental effects.

Light Curve Fitting

Light curve fitting is performed on the extracted spectrophotometric observations using the ExoTEP framework²³. With the orbital parameter values constrained from the white light curve (see Extended Data Table 1), we solely fit for the planetary flux and systematics for each spectrophotometric light curve. The retrieved values of a/R_* and b are within 1σ of the TESS values and such deviations do not affect the retrieved thermal emission spectrum as it is quite insensitive to the orbital parameters compared to transmission spectroscopy. We further explore the impact of our uncertainties on the retrieved map in the secondary eclipse mapping section and find it to be robust against variations of the orbital parameters. We chose a resolution of 5 pixels/bin for our spectrum, corresponding to 408 spectrophotometric bins, to mitigate potential correlation between wavelengths in the atmospheric retrievals as pixels in the spectral direction are not independent. All fits for the 408 bins are then done independently to obtain the planetary flux at secondary eclipse for all bins. Light curve fits are performed using the Affine Invariant Markov chain Monte Carlo Ensemble sampler emcee⁷⁶, using 20,000 steps and 4 walkers per free parameter. The first 12,000 steps, 60% of the total amount, are discarded as burn-in to ensure that the samples are taken after the walkers have converged. The samples from the white and spectrophotometric light curves are used to produce two science products: the detrended white light curve and dayside thermal emission spectrum. The detrended white light curve is obtained by dividing out the best-fit systematics model and subtracting the stellar variability from the light curve to isolate the planetary

signal. For the dayside thermal emission, the median values and uncertainties of $F_p(T_{sec}, \lambda)$ are computed from the samples of the parameters of equation 4.

TESS Phase Curve Analysis

During the TESS Primary Mission, the WASP-18 system was observed in Sectors 2 and 3 (2018 August 22 to October 18). The full-orbit phase curve was analyzed in several earlier publications^{68,77}, which reported a robust detection of the planet’s secondary eclipse and high signal-to-noise measurements of the planet’s phase curve variation and signals corresponding to the host star’s ellipsoidal distortion and Doppler boosting. During the ongoing TESS Extended Mission, the spacecraft reobserved WASP-18 in Sectors 29 and 30 (2020 August 26 to October 21). We carried out a follow-up phase curve analysis of all four Sectors’ worth of TESS data, following the same methods used previously.

The data from the TESS observations were processed by the Science Processing Operations Center (SPOC) pipeline, which yielded near-continuous light curves at a 2-minute cadence. In addition to the raw extracted flux measurements contained in the simple aperture photometry (SAP) light curves, the SPOC pipeline also produced the pre-search conditioning (PDC) light curves, which have been corrected for common-mode instrumental systematics trends that are shared among all sources on the corresponding detector. We used these PDC light curves for our phase curve analysis. After dividing the light curves into individual segments that are separated by the spacecraft’s scheduled momentum dumps, we fit each segment to a combined phase curve and systematics model. The astrophysical phase curve model consists of two components describing the planetary and stellar fluxes:

$$F_p(t) = \bar{f}_p - F_{atm} \cos(\phi)$$

$$F_*(t) = 1 + D \sin(\phi) - E \cos(2\phi)$$

The Doppler boosting D and ellipsoidal distortion E semi-amplitudes are defined as before. Here, the planet’s orbital phase is defined relative to the mid-transit time T_0 : $\phi = 2\pi(t - T_0)$. The planet’s phase curve contribution has a single mode with a semi-amplitude of F_{atm} and oscillates around the average relative planetary flux \bar{f}_p . The transit and secondary eclipse light curves ϕ_t and ϕ_e were modeled using batman with quadratic limb-darkening. In this parameterization, the secondary eclipse depth (i.e., dayside flux) and nightside flux are $\bar{f}_p + F_{atm}$ and $\bar{f}_p - F_{atm}$, respectively. For the systematics model, we used polynomials in time and chose the optimal polynomial order for each segment individually that minimized the BIC.

We used ExoTEP to calculate the posterior distributions of the free parameters through a joint MCMC fit of all light curve segments. In order to reduce the number of free parameters in the joint fit, we first carried out fits to smaller groups of light curve segments corresponding to each TESS Sector and then divided the light curve segments by the best-fit systematics model. In the final joint fit of the systematics-corrected TESS light curve, no additional systematics parameters were included. We accounted for time-correlated noise (i.e., red noise) by fixing the uncertainty of all datapoints within each Sector to the standard deviation of the residuals, multiplied by the fractional enhancement of the average binned residual scatter from the expected Poisson noise scaling across bin sizes ranging from 30 minutes to 8 hours⁷⁷. In addition to the phase curve parameters described above (\bar{f}_p, F_{atm}, D, E), we allowed the mid-transit time T_0 , orbital period P , relative planetary radius

R_p/R_* , scaled orbital semi-major axis a/R_* , impact parameter b , and quadratic limb-darkening coefficients u_1 and u_2 to vary freely.

The results of our TESS phase curve fit are listed in Extended Data Table 1. The updated values for the orbital ephemeris and transit shape parameters are statistically consistent with the published results from the previous TESS phase curve analyses^{68,77}, while being significantly more precise. We used the median and 1σ uncertainties of a/R_* and b as Gaussian priors in the NIRISS/SOSS white light curve fit. We also used the median values of P , R_p/R_* , D , and E as fixed parameters for the NIRISS/SOSS white and spectrophotometric light curves fit. We obtained a secondary eclipse depth of 357 ± 14 ppm and a nightside flux that is consistent with zero. All three phase curve amplitudes were measured at high signal-to-noise: $F_{atm} = 177.5 \pm 5.7$ ppm, $D = 21.8 \pm 5.2$ ppm, and $E = 172.2 \pm 5.6$ ppm.

Secondary Eclipse Mapping.

To perform eclipse mapping, we use both ThERESA⁴¹ and the methods of Mansfield et al. (2020)⁴⁰, which are separate implementations of the same process introduced by Rauscher et al. (2018)³⁹ when applied to white light curves, to cross-check our results. First, we generate a basis set of light curves from spherical harmonic maps^{78,79} with degree l_{max} , then transform these light curves to a new, orthogonal basis set of “eigencurves” using principal component analysis (PCA). Each eigencurve corresponds to an “eigenmap,” the planetary flux map which, when integrated over the visible hemisphere at each exposure time, generates the corresponding eigencurve.

We then fit the white light curve with a linear combination of a uniform-map light curve, the N most informative (largest eigenvalue) eigencurves, and a constant offset term to adjust for the fact that the observed planetary flux during eclipse (when the planet is entirely blocked by the star) must be equal to 0 and to allow for adjustments to light-curve normalization. Since the eigenmaps represent differences from a uniform map, it is possible to recover a fit which contains regions of negative planet emission. This is physically impossible, so we impose a positivity constraint on the total flux map. While the eigenmaps are mathematically defined across the entire planetary sphere, our observations only constrain the portion of the planet that is visible during the observation, so we only enforce the flux positivity condition in the visible region of the planet. While this positivity condition could introduce a Lucy-Sweeney⁸⁰ bias near zero flux, we note that our fitted maps (and GCM predictions) are far from negative and increasing this boundary to, for example, 300 K leads to no change in results. We test all combinations of $l_{max} \leq 6$ and $N \leq 8$ using a least-squares minimization and select the optimal values by minimizing the BIC.

We find that the fit with the lowest BIC to the broadband light curve has $l_{max} = 5$ and $N = 5$. However, the fit with $l_{max} = 2$ and $N = 5$ was only slightly less preferred, so here we explore the inferred brightness distribution from both solutions. Extended Data Figure 8 shows the resulting light curve for the $l_{max} = 5$, $N = 5$ solution after sequential subtraction of each eigencurve. The preference for a fit with five eigencurves is driven by the residuals in ingress and egress, which can be seen by eye and are not sufficiently corrected for with a uniform map. Including the uniform-map light curve and the constant term, the fit thus contained a total of seven free parameters. We used a Markov Chain Monte Carlo (MCMC) procedure to estimate parameter uncertainties. For the analysis following Mansfield et al. (2020)⁴⁰, we test for convergence of the MCMC by ensuring that the chain length is 50 times the autocorrelation timescale, while for the

analysis using THERESA⁴¹ we use the Gelman-Rubin convergence test⁸¹ and achieve values ≤ 1.00006 .

The resulting weights of each eigencurve are then applied to the corresponding eigenmaps to generate a flux map of the planet. We convert the star-normalized flux map to brightness temperature by assuming the planet is a blackbody and the star emits as a PHOENIX⁴² spectrum calculated with PyMSG⁸², both integrated over the NIRISS/SOSS throughput. We estimate temperature map uncertainties by computing a subsample of maps from the MCMC posterior distribution and calculating 68.3%, 95.5%, and 99.7% quantiles at each location, including the effects of uncertainties in planetary radius, stellar temperature and stellar $\log g$.

Figure 4 shows the resulting broadband brightness temperature map for the $l_{\max} = 5, N = 5$ case and longitudinal brightness temperature profiles for both the $l_{\max} = 5, N = 5$ and $l_{\max} = 2, N = 5$ cases, calculated by averaging meridian flux at each longitude weighted by $\cos(\text{latitude})^2$. Additionally, we compare the equatorial slices to predictions from several GCMs (see General Circulation Models section). We note that not all structures on a planetary map will leave an observable signature in a secondary eclipse light curve. When comparing GCMs to secondary eclipse maps, it is important to only compare the components of GCM maps which can be physically accessed with eclipse mapping. Therefore, we use the methods of Luger et al. (2021)⁸³ to separate each GCM map into the “null space”, or components that are inaccessible to eclipse mapping observations, and the “preimage”, or components that are accessible through mapping. Figure 4 compares the longitudinal temperature trends from only the preimage of each GCM to the observed map. We find that both map solutions agree on a steep gradient in temperature near the limbs, which is well matched by GCM predictions. Additionally, both maps show a temperature distribution roughly symmetrical in longitude about the substellar point. However, the two maps disagree on the exact shape of the brightness distribution. The $l_{\max} = 5, N = 5$ map shows an extended hot plateau region of roughly constant temperature from -40° to $+40^\circ$ in longitude, while the $l_{\max} = 2, N = 5$ map shows a more concentrated hot spot with a steady decrease in temperature away from the substellar point. As these maps both fit the data with similar BIC, the current data do not give us the necessary precision to determine which solution represents the true temperature distribution of WASP-18b. Future observations at higher precision may distinguish between these two modes of solutions.

To test our ability to constrain latitudinal structures, we performed two eclipse-mapping fits: the eigenmapping fit presented above and a fit where the initial basis set of maps is a longitudinal Fourier series that is constant with latitude (see Extended Data Fig. 9). Both methods retrieve similar longitudinal temperature structures, with steep gradients near the limb and an extended hot plateau. However, the constant-with-latitude map is also able to fit the data well, indicating a lack of constraints on latitudinal features within the uncertainties on the data. This is not unexpected as the relatively low impact parameter ($b = 0.34$) of WASP-18b results in a lower amount of latitudinal information contained in the secondary eclipse signal. Further observations of WASP-18b, or of planets with higher impact parameter, may enable us to pull latitudinal signals out of the noise.

Our eclipse mapping assumes the orbital parameters of the system are precisely known relative to data uncertainties, a safe assumption with Spitzer data³⁹. With JWST, data quality may be high enough that uncertainties on orbital parameters impart significant uncertainty on the mapping results. To test this, we ran analyses with impact parameter, orbital semi-major axis, and eclipse

time fixed to values $\pm 1\sigma$. In some cases, this led to a "hotspot" model like the red one in Figure 4 being preferred over a "plateau" model like the blue one, which is unsurprising given their similar statistical preference. However, all resulting maps were well within the uncertainties of one of the two models presented. We note that, while the eccentricity is kept fixed to zero throughout this analysis, as justified by the preference for a circular orbit in the TESS analysis, considering an eccentric orbit would allow to first order for variations in mid-eclipse time and eclipse duration⁸⁴. Past photometric and radial velocity observations of WASP-18b have found a small but non-zero eccentricity for WASP-18b on the order of $e = 0.008^{85-87}$, corresponding to an offset of the time of mid-eclipse of 9 seconds, as well as a difference of 120 seconds between the transit and eclipse durations. These differences in eclipse timing and duration are of the same magnitude as those induced while varying T_{sec} , a/R_* , and b (8 seconds for the mid-eclipse time and 90 seconds for the eclipse duration). Therefore, performing the mapping considering a circular orbit while varying T_{sec} , a/R_* , and b is analogous to effects that could be expected from an eccentric orbit.

Atmospheric Retrieval.

We perform 1D atmospheric retrievals on the NAMELESS reduction at a resolution of 5 pixels per bin (408 bins) using four techniques with varying levels of physical assumptions: a self-consistent radiative-convective-thermochemical equilibrium grid retrieval (ScCHIMERA), a chemical equilibrium with free temperature-pressure profile retrieval (SCARLET), a free chemistry retrieval with thermal dissociation (HyDRA), and a free chemistry retrieval with abundances assumed constant with altitude (POSEIDON). None of the retrievals used here consider the presence of clouds as the dayside of giant exoplanets are expected to be cloudless at the equilibrium temperature $T_{eq} = 2429 \text{ K}^{25}$ of WASP-18b⁸⁸. All retrieval methods considered the same PHOENIX stellar spectrum²⁴, produced using previously published parameters for WASP-18 (i.e., $T_{eff} = 6435 \text{ K}$, $\log g = 4.35$, and $[\text{Fe}/\text{H}] = 0.1^{25,89}$), to convert from model planet flux spectra to F_p/F_s values. We chose to use a model stellar spectrum instead of the extracted spectrum to avoid the possible introduction of systematic errors through the process of absolute flux calibration.

1D Radiative-Convective-Thermochemical Equilibrium (1D-RCTE) Grid Retrieval

We use a 1D-RCTE grid retrieval-based method, ScCHIMERA^{7,90}, with the opacity sources described in Mansfield et al. (2021)² and Glidic et al. (2022)⁹¹. These 1D-RCTE models assume cloud-free one-dimensional radiative-convective-thermochemical equilibrium using the methods described in Toon et al. (1989)⁹² to solve for the net flux divergence across each layer of the atmosphere, and the Newton-Raphson iteration scheme of McKay et al. (1989)⁹³ to march towards an equilibrium vertical temperature structure. The NASA Chemical Equilibrium with Applications-2 (CEA2) routine⁹⁴ is used to compute the thermochemical equilibrium gas and condensate mole fractions for hundreds of relevant species. Opacities are computed with the correlated-K random-overlap-resort-rebin method⁹⁵. Input elemental abundances from Lodders & Palme (2009)⁹⁶ are scaled to a given metallicity ($[\text{M}/\text{H}]$) and carbon-to-oxygen ratio (C/O).

Using WASP-18b's planetary and stellar parameters, we produced a grid of 2730 1D-RCTE models and resulting top-of-atmosphere thermal emission spectra spanning the atmospheric C/O (0.01 – 2.0), $[\text{M}/\text{H}]$ (-2.0 – 2.0, where 0 is solar, 1 is 10 \times , etc), and heat redistribution (f , 1.0 – 2.8, where 1 = full, 2 = dayside, and 2.67 is the max value, as defined in Arcangeli et al. (2019)¹⁶).

We additionally include a scale factor, A_{HS} (allowed to vary from 0.5 – 2.0), that multiplies the planetary flux by a constant to account for a hot spot area fraction emitting most of the observed flux⁹⁷. The PyMultiNest⁹⁸ routine is used to sample the 1D-RCTE spectra via interpolation (and subsequent binning to the data wavelength bins) to obtain posterior probability constraints on the above parameters. We have made public our grid models, including temperature-pressure profiles, molecular abundances, and emission spectra, as well as additional figures showing the posteriors of retrieved parameters and the impact of each parameter on the spectrum. This can be found on Zenodo under the DOI: 10.5281/zenodo.7332105.

Chemical Equilibrium & Free Temperature Retrieval

We use the SCARLET atmospheric retrieval framework^{23,99–101} to perform a chemical equilibrium retrieval with a free temperature-pressure profile on our retrieved dayside thermal emission spectrum. The SCARLET forward model computes the emergent disk-integrated thermal emission for a given set of molecular abundances, temperature structure, and cloud properties. The forward model is then coupled to the Affine Invariant Markov chain Monte Carlo Ensemble sampler emcee⁷⁶ to constrain the atmospheric properties. Due to the high dayside temperature and large pressures probed through thermal emission spectroscopy, we assume the atmosphere is in thermochemical equilibrium. For the equilibrium chemistry, we consider the following species: H_2 , H , $H^{-102,103}$, He , Na , $K^{104,105}$, Fe , H_2O^{106} , OH^{107} , CO^{107} , CO_2^{107} , CH_4^{108} , NH_3^{109} , HCN^{110} , TiO^{111} , VO^{112} , and FeH^{113} . The abundances of these species are interpolated in temperature and pressure using a grid of chemical equilibrium abundances from FastChem2¹¹⁴, which includes the effects of thermal dissociation for all the species included in the model. These abundances also vary with the atmospheric metallicity, $[M/H]$ ($U[-3, 3]$), and carbon-to-oxygen ratio, C/O ($U[0, 1]$), which are considered as free parameters in the retrieval. As for the temperature structure, we use a free parametrization¹¹⁵ which here fits for $N = 10$ temperature points ($U[100, 4500]$ K) with fixed spacing in log-pressure ($P = 10^2 - 10^{-6}$ bar). Although this parametrization is free, it is regularized by a prior punishing for the second derivative of the profile using a physical hyper-parameter, σ_s , with units of kelvin per pressure decade squared ($K \text{ dex}^{-2}$). This prior is implemented to prevent over-fitting and nonphysical temperature oscillations at short pressure scale lengths. For this work, we use a hyper-parameter value of $\sigma_s = 1000 \text{ K dex}^{-2}$, corresponding to a low punishment against second derivatives as we want the retrieval to explore freely the temperature-pressure profile parameter space. We note that further lowering this punishment does not affect the retrieved TP profile. Finally, we fit for an area fraction A_{HS} ($U[0, 1]$) that is multiplied directly with the thermal emission spectrum, for a total of 14 free parameters. This factor is used to compensate for the presence of a hot spot which, while taking up only a portion of the planetary disk, contributes almost completely to the observed emission⁹⁷. For the retrieval, we use four walkers per free parameter and consider the standard chi-square likelihood for the spectrum fit. We run the retrieval for 25,000 steps and discard the first 15,000 steps, 60% of the total amount, to ensure that the samples are taken after the walkers have converged. Spectra are initially computed using opacity sampling at a resolving power of $R = 15,625$, which is sufficient to simulate JWST observations¹¹⁶, convolved to the instrument resolution and subsequently binned to the retrieved wavelength bins.

Due to WASP-18b's large mass of $M_p = 10.4 M_J$, an important amount of rocky and icy material can be accreted without significantly changing the overall metallicity of the planet. As a zeroth order estimate, we assume that the planet formed with exactly solar metallicity. Then, the mass of

metals accreted needed to increase the overall metallicity to N times solar is given by $Z_{\odot}M_p(N - 1)$, where $Z_{\odot} = 0.0134^{26}$ is the solar metal mass fraction. From this relation and assuming that the planet's envelope is well-mixed, we relate our retrieved metallicity probability posterior to the mass of metals accreted.

We quantify the impact of the stellar spectrum considered for the analysis on the retrieved atmospheric properties by running the same retrieval while varying the stellar spectrum. First, we explore the impact of the PHOENIX stellar model parameters by varying them within their 1σ uncertainties (50 K for T_{eff} , 0.05 for $\log g$, and 0.1 for $[M/H]$). We find these variations to have minimal impact on the retrieved metallicity with the measured median varying at most by 0.04 dex ($\sim 0.15\sigma$), the same is true for the C/O upper-limit with all retrieved upper-limits being within 0.06 of the retrieval with the standard stellar parameters, with the exception of the $T_{\text{eff}} = 6385$ K case which retrieves $C/O < 0.64$ at 3σ but does not affect our conclusions on WASP-18b's formation and migration history. In second place, we test the impact of the type of stellar model considered by also running the retrieval with an ATLAS9 stellar model¹¹⁷ ($T_{\text{eff}} = 6435$ K, $\log g = 4.35$, $[M/H] = 0.1$). We find that the effect on the results are similar to those observed when varying the stellar parameters within their 1σ uncertainty, with a retrieved metallicity measurement of $[M/H] = 0.05^{+0.26}_{-0.25}$ and C/O 3σ upper-limit of 0.603. Finally, we test the effect of using the flux calibrated spectrum on the retrieved atmospheric properties. The use of a flux calibrated spectrum, measured directly from the NIRISS/SOSS observations, was avoided due to some slight issues found in the currently available CRDS reference files used in the photom step of the jwst pipeline Stage 2. The most recent reference file, photom_0034, is able to reproduce accurately the continuum from the PHOENIX model considered in the main retrieval but shows significant noise in the observed spectrum. We also looked at reference file photom_0037, which was produced from ground data and does not account for the larger than expected throughput that was observed on sky²¹. Despite this, we perform a retrieval on the flux calibrated stellar spectrum obtained by smoothing the response curve of reference file photom_0034 with a median filter of width 100. The retrieval ran on the flux calibrated stellar spectrum retrieves a metallicity $[M/H]$ of $0.11^{+0.24}_{-0.68}$ and a C/O 3σ upper limit of 0.739.

We also quantify the impact of the choice of reduction on the retrieved atmospheric properties by performing the same retrieval on the four spectra shown in Extended Data Fig. 3. We find that all reductions retrieve metallicities that are within 1σ of the NAMELESS reduction, with $[M/H]$ values of $0.00^{+0.38}_{-0.66}$, $0.05^{+0.30}_{-0.33}$, and $0.37^{+0.38}_{-0.31}$ for the nirHiss, transitspectroscopy, and supreme-SPOON reductions respectively. We also retrieve C/O 3σ upper limits of 0.749, 0.602, and 0.627 in that same order. We note that the slightly higher metallicity retrieved from the supreme-SPOON reduction is most likely due to the downward slope longward of $2 \mu\text{m}$, possibly caused by dilution of the signal through the process of background subtraction or $1/f$ correction, which is not observed in the nirHiss and transitspectroscopy reductions. We also find that the nirHiss retrieves larger uncertainties on the measured $[M/H]$ and C/O, caused by the larger scatter at short wavelengths, which is possibly introduced through the optimal extraction process as this effect is not seen in the reductions using box extraction.

Free Chemistry & Free Temperature-Pressure Profile Retrieval

We use two independent atmospheric retrieval codes to perform free-chemistry retrievals on WASP-18b's dayside thermal emission spectrum: HyDRA^{17,27,118,119}, including the effects of

thermal dissociation, and POSEIDON^{120,121}, which here assumes constant-with-depth abundances for all chemical species.

HyDRA consists of a parametric forward atmospheric model coupled to a PYTHON implementation of the MULTINEST¹²² Nested Sampling Bayesian parameter estimation algorithm¹²³, PYMULTINEST⁹⁸. The inputs to the parametric model are the deep-atmosphere mixing ratios for each of the chemical species included, the temperature-pressure profile parameters (6 free parameters), and a dilution parameter (area fraction) to account for 3D effects on the dayside⁹⁷. Given the high dayside temperatures of WASP-18b, we consider high-temperature opacity sources and the effects of thermal dissociation, as described in Gandhi et al. (2020)¹⁷. We include opacity due to the molecular, atomic and ionic species with spectral features in the 0.8–2.8 μm range which are expected in a high-temperature, H₂-rich atmosphere: collision-induced absorption (CIA) due to H₂-H₂ and H₂-He¹²⁴, H₂O¹⁰⁷, CO¹⁰⁷, CO₂¹⁰⁷, HCN¹²⁵, OH¹⁰⁷, TiO¹¹¹, VO¹¹², FeH¹²⁶, Na¹²⁷, K¹²⁷ and H^{-102,103}. The line-by-line absorption cross sections for these species are calculated following the methods in Gandhi & Madhusudhan (2017)¹²⁸, using data from the references listed. The H⁻ free-free and bound-free opacity is calculated using the methods of Bell & Berrington (1987)¹⁰² and John (1988)¹⁰³, respectively. HyDRA includes the effects of thermal dissociation of H₂O, TiO, VO and H⁻ as a function of pressure and temperature, following the method of Parmentier et al. (2018)⁹. In particular, the abundance profiles of these species are calculated following Equations 1 and 2 of ref. ⁹, where the deep abundance of each species (A_0) is a parameter in the retrieval, and the α , β and γ parameters are those given in Table 1 of that same work. The abundance profiles of the remaining chemical species are assumed to be constant with depth.

HyDRA uses the parametric temperature-pressure profile of Madhusudhan & Seager (2009)¹²⁹, which has been used extensively in exoplanet atmosphere retrievals, including ultra-hot Jupiters such as WASP-18b¹⁷. The temperature parameterization is able to capture thermally inverted, non-inverted, and isothermal profiles, spanning the range of possible thermal structures for ultra-hot Jupiters. The HyDRA retrievals also include an area fraction parameter, A_{HS} , which multiplies the emergent emission spectrum by a constant factor to account for the dominant contribution of the hot spot⁹⁷. Given the input chemical abundances, temperature-pressure profile parameters and area fraction, the model thermal emission spectrum is calculated at a resolving power of $R \sim 15,000$, convolved to the instrument resolution, binned to the data resolution, and compared to the data to calculate the likelihood of the model instance. Detection significances are calculated for specific chemical species by comparing the Bayesian Evidences of retrievals which include/exclude the species in question¹⁰⁰. These detection significances factor in the ability of the retrieval to fit the observations with a different temperature profile and/or other chemical species, when the species in question is not included. Since thermal emission spectra are very sensitive to the atmospheric temperature profile, changes in the temperature structure can, in some cases, somewhat compensate for the absence of a particular chemical species, contributing to a lower detection significance.

We additionally use HyDRA to test the sensitivity of the free chemistry retrievals to the limits of the log-normal prior distributions assumed for the chemical abundances. For the HyDRA retrieval including thermal dissociation effects, we test two scenarios: wide, uninformative priors for all 11 species included (log mixing ratio ranging from -12 to -1), and slightly more restricted priors for the refractory species included (log mixing ratio ranging from -12 to -4 for TiO, VO and FeH, -12 to -2 for Na and K, and -12 to -1 for the remaining species). The more restricted prior limits for

the refractory species are motivated by the relatively lower abundances expected for these species compared to the volatile species, across a range of metallicities and C/O ratios^{130–132}.

We find that the atmospheric properties retrieved with HyDRA are consistent within 1σ for the two choices of prior limits. With the wide priors, the HyDRA retrieval infers a H₂O log mixing ratio of $-3.09^{+1.28}_{-0.32}$, with double-peaked posterior probability distributions for the H₂O and TiO abundances. While the dominant posterior peaks correspond to approximately solar H₂O and TiO abundances, the second, lower-likelihood peaks correspond to ~ 30 x and $\sim 10^4$ x super-solar H₂O and TiO abundances, respectively. Such an extreme TiO abundance warrants skepticism, and may, for example, be a result of the well-known degeneracy between chemical abundances and the atmospheric temperature gradient (see also Evans et al. (2017)¹³³). The retrieved H₂O abundance in this case is consistent with the chemical equilibrium retrievals and self-consistent 1D radiative-convective models described above, though with a larger uncertainty due to the double-peaked posterior distribution. When the restricted priors are used, the low-likelihood, high-abundance peaks in the H₂O and TiO posterior distributions are no longer present, and the retrieved H₂O abundance is $-3.23^{+0.45}_{-0.29}$, in excellent agreement with the chemical equilibrium retrievals and self-consistent 1D radiative-convective models. We note that the retrieved temperature-pressure profiles and abundances of CO, CO₂, HCN, OH, H⁺ and FeH are unaffected by the choice of prior limits discussed above. The abundances of Na and K are unconstrained in both cases. While the two choices of prior limits give consistent results, the expectation of chemical equilibrium in the atmosphere of WASP-18b, in addition to the unlikelihood of a $\sim 10^4$ x super-solar TiO abundance, motivate the use of the somewhat restricted priors on the refractory chemical abundances.

We note that for either choice of prior, the retrieved deep-atmosphere abundance of VO is significantly higher than that inferred by the chemical equilibrium retrieval (Extended Data Fig. 5). This is due to a difference in the thermal dissociation prescriptions; in the HyDRA retrieval, thermal dissociation results in a significantly depleted VO abundance at the photosphere, while in the chemical equilibrium retrieval thermal dissociation begins at lower pressures. Furthermore, the posterior distribution for the VO abundance peaks at highly super-solar values ($\sim 10^4$ x solar). Such a high abundance is physically unlikely, and may indicate the presence of further sources of optical opacity not included in the retrieval.

We also conduct free-chemistry retrievals, without the inclusion of thermal dissociation, using POSEIDON. POSEIDON is an atmospheric retrieval code originally designed for the interpretation of exoplanet transmission spectra¹²⁰. We have recently extended POSEIDON to include secondary eclipse emission spectra modelling and retrieval capabilities. For an ultra-hot Jupiter such as WASP-18b, where the dayside can be assumed clear, POSEIDON's emission forward model calculates the emergent flux via a standard single stream prescription without scattering

$$I_{\text{layer top}}(\mu, \lambda) = I_{\text{layer bot}}(\mu, \lambda)e^{-d\tau_{\text{layer}}(\lambda)/\mu} + (1 - e^{-d\tau_{\text{layer}}(\lambda)/\mu})B(T_{\text{layer}}, \lambda)$$

where $I_{\text{layer bot}}$ and $I_{\text{layer top}}$ are, respectively, the upwards specific intensity incident on the lower layer boundary and the intensity leaving the upper layer boundary, $d\tau_{\text{layer}}$ is the differential vertical optical depth across the layer, $\mu = \cos\theta$ specifies the ray direction, and $B(T_{\text{layer}}, \lambda)$ is the black body spectral radiance at the layer temperature. Using the boundary condition $I_{\text{deep}}(\mu, \lambda) = B(T_{\text{layer}}, \lambda)$, POSEIDON propagates Equation 8 upwards to determine the emergent intensity at the top of the atmosphere. The emergent planetary flux is determined via

$$F_{p,emergent}(\lambda) = 2\pi \int_0^1 \mu I_{emergent}(\mu, \lambda) d\mu \approx 2\pi \sum_{\mu} \mu I_{emergent}(\mu, \lambda) W(\mu)$$

where W are the Gaussian quadrature weights corresponding to each μ (here taken as second order quadrature over the interval $\mu \in [0, 1]$). Finally, the planet-star flux ratio seen at Earth is given by

$$\left(\frac{F_p}{F_*}\right)_{obs}(\lambda) = \left(\frac{R_{p,phot}(\lambda)}{R_*}\right)^2 \frac{F_{p,emergent}(\lambda)}{F_*(\lambda)}$$

where $R_{p,phot}$ is the effective photosphere radius^{134,135} at wavelength λ (evaluated at $\tau(\lambda) = 2/3$). Since the calculation of $R_{p,phot}$ requires a reference radius boundary condition to solve the equation of hydrostatic equilibrium, we prescribe $r(P = 10 \text{ mbar})$ as a free parameter.

For the WASP-18b POSEIDON retrieval analysis, we calculated emission spectra via opacity sampling and explored the parameter space using MULTINEST via its Python wrapper PYMULTINEST^{98,122}. POSEIDON solves the radiative transfer on an intermediate resolution wavelength grid (here, $R = 20,000$ from 0.8 to 3.0 μm), onto which high-spectral-resolution ($R \sim 10^6$), pre-computed cross sections¹³⁶ are down-sampled. For WASP-18b, we consider the following opacity sources: $\text{H}_2\text{-H}_2$ ¹³⁷ and $\text{H}_2\text{-He}$ ¹³⁷ CIA, H_2O ¹⁰⁶, CO ¹³⁸, CO_2 ¹³⁹, HCN ¹⁴⁰, H^{103} , OH ¹⁴¹, FeH ¹¹³, TiO ¹¹¹, VO ¹¹², Na ¹⁴², and K ¹⁴². We prescribed uniform-in-altitude mixing ratios, defined by a single free parameter for each of the chemical species included. The PYMULTINEST retrievals with POSEIDON use 2,000 live points, and the six-parameter temperature-pressure profile¹²⁹ outlined above in the description of HyDRA. POSEIDON accounts for the dominant contribution of the hot spot by prescribing the 10 millibar radius as a free parameter, which is subsequently converted into an equivalent A_{HS} posterior by comparison to the white light planet radius.

We note that both HyDRA and POSEIDON yield consistent retrieval results when thermal dissociation is not considered in the HyDRA retrievals. However, the inclusion of thermal dissociation results in significantly different retrieved H_2O abundances (see Extended Data Fig. 5) and temperature-pressure profiles, which are in agreement with the chemical equilibrium retrievals and self-consistent 1D radiative-convective models described above.

Disequilibrium Chemistry Model.

To further justify the use of chemical equilibrium models in our analysis of WASP-18b, we produce a grid of disequilibrium chemistry forward models to assess whether disequilibrium effects might strongly shape our observations. We begin by calculating the atmospheric temperature–pressure structure of WASP-18b under radiative-convective equilibrium with the HELIOS^{143,144} radiative transfer code. Next, we calculate altitude-dependent mixing ratios of chemical species under this temperature–pressure structure with the VULCAN¹⁴⁵ 1-dimensional chemical kinetics code, using an N-C-H-O reaction network that includes ionization and recombination of Fe, Mg, Ca, Na, K, H, and He. We use the current version of VULCAN (VULCAN2¹⁴⁶), which includes optional photochemistry and parameterizes the transport flux of chemical species with eddy diffusion, molecular diffusion, thermal diffusion, and vertical advection. We update this code to include the effect of photoionization. Finally, we generate emission spectra with the PLATON radiative transfer code¹⁴⁷ at the resolution and wavelength range of NIRISS/SOSS. Our PLATON emission spectrum calculations use the code branch that

allows varying chemical mixing ratios as a function of altitude¹⁴⁸. We modify PLATON to calculate bound-free and free-free H^- opacity as a function of altitude; this addition is necessary to assess whether disequilibrium abundance H^- opacity could mute spectral features more strongly than predicted by equilibrium chemistry. We furthermore modify PLATON to accept higher-temperature ($T > 3000$ K) opacity files that we calculate with the HELIOS-K code^{149,150}.

For our set of models, we vary the eddy diffusion coefficient, K_{zz} , from $10^7 \text{ cm}^2 \text{ s}^{-1}$ to $10^{13} \text{ cm}^2 \text{ s}^{-1}$, holding it constant at all altitudes for a given simulation. We perform this sweep over many orders of magnitude of K_{zz} to understand the maximum effect that disequilibrium chemistry could have on the observed emission spectrum. While K_{zz} is a limited descriptor of vertical mixing and is expected to vary as a function of altitude (e.g., Parmentier et al. (2013)¹⁵¹), we assume that our forward models bracket the expected vertical mixing behavior of this planet. This statement is further motivated by our GCM models, if we approximate $K_{zz} = vH$ for vertical wind velocity v and atmospheric scale height H ^{152,153}. The minimum dayside-average K_{zz} for our kinematic MHD GCM (see General Circulation Models section) is $\sim 10^8 \text{ cm}^2 \text{ s}^{-1}$, and the maximum dayside-average K_{zz} is $\sim 10^9 \text{ cm}^2 \text{ s}^{-1}$, well within our VULCAN grid range. Our model grid also toggles the inclusion of molecular diffusion and photochemistry. As input to VULCAN when photochemistry is included, we use a stellar spectrum that is appropriate for WASP-18 from Rugheimer et al. (2013)¹⁵⁴. The spectrum is constructed by joining synthetic spectra from Kurucz (1979)¹⁵⁵ and UV flux measurements of Piscium HD 222368 by the International Ultraviolet Explorer at 300 nm.

We find that our inclusion of disequilibrium chemistry effects—photochemistry, molecular diffusion, thermal diffusion, and eddy diffusion—produces spectra that are not strongly discrepant from spectra computed assuming chemical equilibrium. Indeed, all discrepancies between spectra produced under chemical equilibrium and spectra produced under chemical disequilibrium spectra are less than 10 ppm. This agreement is expected, as chemistry at the pressure levels probed by low-resolution emission spectra are not predicted to be strongly modified by photochemistry or mixing (e.g., Tsai et al. (2021)¹⁴⁶). Furthermore, the high temperature of WASP-18b implies that the chemical timescales in the atmosphere are quite short, allowing chemical reactions to occur more quickly than the relevant disequilibrium timescales.

In sum, our grid of chemical disequilibrium forward models indicates that disequilibrium chemistry effects considered here do not strongly affect the emission spectrum of WASP-18b in the NIRISS/SOSS waveband.

General Circulation Models.

A suite of General Circulation Models (GCMs) are compared to the retrieved dayside spectrum and dayside temperature map.

We use the SPARC/MITgcm¹⁵⁶ to model the 3D atmospheric structure of WASP-18b. The model solves the primitive equations in spherical geometry using the MITgcm¹⁵⁷ and the radiative transfer equations using a current 1D radiative transfer model¹⁵⁸. We use the correlated-k framework to generate opacities based on the line-by-line opacities¹⁵⁹. Our model assumes a solar composition for the elemental abundances¹⁶⁰ and chemical equilibrium gas-phase composition¹⁶¹. Our model naturally takes into account the effect of thermal dissociation⁹. We used a time step of 25 s and ran the simulations for about 300 Earth days, averaging all quantities over the last 100 days.

We include additional sources of drag through a Rayleigh drag parametrization with a single constant timescale per model that determines the efficiency with which the flow is damped. The drag is constant over the whole planetary atmosphere. We vary this timescale between models from $\tau_{\text{drag}} = 10^3$ to 10^6 s (efficient drag) and a no drag model with $\tau_{\text{drag}} = \infty$. Our range of drag strengths cover the transition from a drag-free, wind-circulation case to a drag-dominated circulation. The specific WASP-18b simulations that we use are described in more detail in Arcangeli et al. (2019)¹⁶.

The second model we use is the kinematic magnetohydrodynamics (MHD) GCM (described in detail in ref. ⁴⁸) with an updated picket fence radiative transfer scheme¹⁶². Due to the high gravity of this planet, we chose to model the planet from 100 bar to 10^{-4} bar over 65 layers at a horizontal resolution of T31 (corresponding to roughly 3 degree resolution at the equator). We use the kinematic MHD prescription described in Perna et al. (2010)⁴⁵, which has been used in models of hot Jupiters HD 209458b and HD 189733b¹⁶³ as well as the ultra-hot Jupiter WASP-76b^{48,164}. This drag prescription assumes a global dipole magnetic field, generated by an interior dynamo. Because of this geometry, our drag timescale is applied as a Rayleigh drag term solely to the east-west momentum equation (influencing flow perpendicular to magnetic field lines) and is calculated as

$$\tau_{\text{mag}}(B, \rho, T, \phi) = \frac{4\pi\rho\eta(\rho, T)}{B^2|\sin(\phi)|},$$

where B is the chosen global magnetic field strength, ϕ is the latitude, ρ is the density, and η is magnetic resistivity. This timescale is calculated locally and often, allowing the timescale to vary by over 10 orders of magnitude throughout the model and respond to changes in atmospheric temperatures. A minimum timescale cutoff ($\sim 10^3$ s) is applied in locations where τ_{mag} would be less than $1/20^{\text{th}}$ of the planet's orbit, for numerical stability. We chose to model a range of magnetic field strengths (0 G, 5 G, 10 G, and 20 G) as its true value is not known.

Data availability

The data used in this work are publicly available in the Mikulski Archive for Space Telescopes (<https://archive.stsci.edu/>). The data which was used to create all of the figures in this manuscript

are freely available on Zenodo (DOI: 10.5281/zenodo.7907569). All further data are available on request.

Code availability

The open-source pipelines that were used throughout this work are listed below:

NIRISS/SOSS data reduction:

nirHiss (<https://github.com/afeinstein20/nirhiss>);
supreme-SPOON (<https://github.com/radicamc/supreme-spoon>);
transitspectroscopy (<https://github.com/nespinoza/transitspectroscopy>)

Light curve fitting:

batman (<https://github.com/lkreidberg/batman>);
emcee (<https://emcee.readthedocs.io/en/stable/>)

Atmospheric retrievals:

CHIMERA (<https://github.com/mrline/CHIMERA>);
POSEIDON (<https://github.com/MartianColonist/POSEIDON>);
MultiNest (<https://github.com/JohannesBuchner/MultiNest>);
PyMultiNest (<https://github.com/JohannesBuchner/PyMultiNest>)

Eclipse mapping:

ThERESA (<https://github.com/rychallener/ThERESA>);
Eigenspectra (<https://github.com/multidworlds/eigenspectra>)

Atmospheric modeling:

HELIOS (<https://github.com/exoclimate/HELIOS>);
HELIOS-K (<https://github.com/exoclimate/HELIOS-K>);
PLATON (<https://github.com/ideasrule/platon>);
VULCAN (<https://github.com/exoclimate/VULCAN>)

51. Feinstein, A. nirHiss GitHub repository. <https://github.com/afeinstein20/nirhiss> (2022).

52. Radica, M. Supreme-SPOON GitHub repository. <https://github.com/radicamc/supreme-spoon> (2022).

53. Espinoza, N. TransitSpectroscopy GitHub repository. <https://github.com/nespinoza/transitspectroscopy> (2022).

54. Feinstein, A. D. *et al.* Early Release Science of the exoplanet WASP-39b with JWST NIRISS. *Nature* (2023) doi:10.1038/s41586-022-05674-1.

55. STScI. JWST pipeline documentation. <https://jwst-pipeline.readthedocs.io/en/latest/> (2022).

56. STScI. JWST user documentation. <https://jwst-docs.stsci.edu/> (2022).

57. Bell, T. J. *et al.* Eureka!: An End-to-End Pipeline for JWST Time-Series Observations. (2022) doi:10.48550/arXiv.2207.03585.
58. Walt, S. van der *et al.* Scikit-image: Image processing in Python. *PeerJ* **2**, e453 (2014).
59. Craig, M. *et al.* Astropy/ccdproc: v1.3.0.post1. (2017) doi:10.5281/zenodo.1069648.
60. Horne, K. An optimal extraction algorithm for CCD spectroscopy. *Publications of the Astronomical Society of the Pacific* **98**, 609–617 (1986).
61. Darveau-Bernier, A. *et al.* ATOCA: an Algorithm to Treat Order Contamination. Application to the NIRISS SOSS Mode. *Publications of the Astronomical Society of the Pacific* **134**, 094502 (2022).
62. Radica, M. *et al.* APPLESOSS: A Producer of Profiles for SOSS. Application to the NIRISS SOSS Mode. *Publications of the Astronomical Society of the Pacific* **134**, 104502 (2022).
63. Kreidberg, L. Batman : BASeic Transit Model cAlculationN in Python. *Publications of the Astronomical Society of the Pacific* **127**, 1161–1165 (2015).
64. Cowan, N. B. & Agol, E. Inverting Phase Functions to Map Exoplanets. *The Astrophysical Journal* **678**, L129 (2008).
65. Raftery, A. E. Bayesian Model Selection in Social Research. *Sociological Methodology* **25**, 111–163 (1995).
66. Akaike, H. A New Look at the Statistical Model Identification. *IEEE Transactions on Automatic Control* **19**, 716–723 (1974).
67. Leconte, J., Lai, D. & Chabrier, G. Distorted, nonspherical transiting planets: Impact on the transit depth and on the radius determination. *Astronomy & Astrophysics* **528**, A41 (2011).
68. Shporer, A. *et al.* TESS Full Orbital Phase Curve of the WASP-18b System. *The Astronomical Journal* **157**, 178 (2019).
69. Blažek, M. *et al.* Constraints on TESS albedos for five hot Jupiters. *Monthly Notices of the Royal Astronomical Society* **513**, 3444–3457 (2022).
70. Han, E. *et al.* Exoplanet Orbit Database. II. Updates to Exoplanets.org. *Publications of the Astronomical Society of the Pacific* **126**, 827 (2014).
71. Fetherolf, T. *et al.* Variability Catalog of Stars Observed During the TESS Prime Mission. *arXiv e-prints* arXiv:2208.11721 (2022).
72. Miller, B. P., Gallo, E., Wright, J. T. & Dupree, A. K. ON THE DETECTABILITY OF STAR-PLANET INTERACTION. *The Astrophysical Journal* **754**, 137 (2012).
73. Pillitteri, I., Wolk, S. J., Sciortino, S. & Antoci, V. No X-rays from WASP-18 - Implications for its age, activity, and the influence of its massive hot Jupiter. *Astronomy & Astrophysics* **567**, A128 (2014).

74. Shkolnik, E. L. & Llama, J. Signatures of Star-planet interactions. in 1737–1753 (2018). doi:10.1007/978-3-319-55333-7_20.
75. Pedregosa, F. *et al.* Scikit-learn: Machine learning in Python. *Journal of Machine Learning Research* **12**, 2825–2830 (2011).
76. Foreman-Mackey, D., Hogg, D. W., Lang, D. & Goodman, J. Emcee : The MCMC Hammer. *Publications of the Astronomical Society of the Pacific* **125**, 306–312 (2013).
77. Wong, I. *et al.* Systematic Phase Curve Study of Known Transiting Systems from Year One of the TESS Mission. *The Astronomical Journal* **160**, 155 (2020).
78. Louden, T. & Kreidberg, L. SPIDERMAN: An open-source code to model phase curves and secondary eclipses. *Monthly Notices of the Royal Astronomical Society* **477**, 2613–2627 (2018).
79. Luger, R. *et al.* Starry: Analytic Occultation Light Curves. *The Astronomical Journal* **157**, 64 (2019).
80. Lucy, L. B. & Sweeney, M. A. Spectroscopic binaries with circular orbits. *The Astronomical Journal* **76**, 544–556 (1971).
81. Gelman, A. & Rubin, D. B. Inference from Iterative Simulation Using Multiple Sequences. *Statistical Science* **7**, 457–472 (1992).
82. Townsend, R. & Lopez, A. MSG: A software package for interpolating stellar spectra in pre-calculated grids. *The Journal of Open Source Software* **8**, 4602 (2023).
83. Luger, R., Foreman-Mackey, D., Hedges, C. & Hogg, D. W. Mapping Stellar Surfaces. I. Degeneracies in the Rotational Light-curve Problem. *The Astronomical Journal* **162**, 123 (2021).
84. Winn, J. N. Transits and occultations. (2010) doi:10.48550/ARXIV.1001.2010.
85. Triaud, A. H. M. J. *et al.* Spin-orbit angle measurements for six southern transiting planets. New insights into the dynamical origins of hot Jupiters. *Astronomy & Astrophysics* **524**, A25 (2010).
86. Nymeyer, S. *et al.* Spitzer Secondary Eclipses of WASP-18b. *The Astrophysical Journal* **742**, 35 (2011).
87. Bonomo, A. S. *et al.* The GAPS programme with HARPS-n at TNG. *Astronomy & Astrophysics* **602**, A107 (2017).
88. Gao, P. *et al.* Aerosol composition of hot giant exoplanets dominated by silicates and hydrocarbon hazes. *Nature Astronomy* **4**, 951–956 (2020).
89. Stassun, K. G. *et al.* The Revised TESS Input Catalog and Candidate Target List. *The Astronomical Journal* **158**, 138 (2019).
90. Piskorz, D. *et al.* Ground- and Space-based Detection of the Thermal Emission Spectrum of the Transiting Hot Jupiter KELT-2Ab. *The Astronomical Journal* **156**, 133 (2018).

91. Glidic, K. *et al.* Atmospheric Characterization of Hot Jupiter CoRoT-1 b Using the Wide Field Camera 3 on the Hubble Space Telescope. *The Astronomical Journal* **164**, 19 (2022).
92. Toon, O. B., McKay, C. P., Ackerman, T. P. & Santhanam, K. Rapid calculation of radiative heating rates and photodissociation rates in inhomogeneous multiple scattering atmospheres. *J. Geophys. Res.* **94**, 16287–16301 (1989).
93. McKay, C. P., Pollack, J. B. & Courtin, R. The thermal structure of Titan's atmosphere. *Icarus* **80**, 23–53 (1989).
94. Gordon, S. & McBride, B. J. *Computer program for calculation of complex chemical equilibrium compositions and applications. Part 1: analysis.* (1994).
95. Amundsen, D. S., Tremblin, P., Manners, J., Baraffe, I. & Mayne, N. J. Treatment of overlapping gaseous absorption with the correlated-k method in hot Jupiter and brown dwarf atmosphere models. *Astronomy & Astrophysics* **598**, A97 (2017).
96. Lodders, K. & Palme, H. Solar System Elemental Abundances in 2009. *Meteoritics and Planetary Science Supplement* **72**, 5154 (2009).
97. Taylor, J. *et al.* Understanding and mitigating biases when studying inhomogeneous emission spectra with JWST. *Monthly Notices of the Royal Astronomical Society* **493**, 4342–4354 (2020).
98. Buchner, J. *et al.* X-ray spectral modelling of the AGN obscuring region in the CDFS: Bayesian model selection and catalogue. *Astronomy and Astrophysics* **564**, A125 (2014).
99. Benneke, B. & Seager, S. Atmospheric Retrieval for Super-Earths: Uniquely Constraining the Atmospheric Composition with Transmission Spectroscopy. *The Astrophysical Journal* **753**, 100 (2012).
100. Benneke, B. & Seager, S. HOW TO DISTINGUISH BETWEEN CLOUDY MINI-NEPTUNES AND WATER/VOLATILE-DOMINATED SUPER-EARTHS. *The Astrophysical Journal* **778**, 153 (2013).
101. Benneke, B. Strict Upper Limits on the Carbon-to-Oxygen Ratios of Eight Hot Jupiters from Self-Consistent Atmospheric Retrieval. (2015) doi:10.48550/arXiv.1504.07655.
102. Bell, K. L. & Berrington, K. A. Free-free absorption coefficient of the negative hydrogen ion. *Journal of Physics B Atomic Molecular Physics* **20**, 801–806 (1987).
103. John, T. L. Continuous absorption by the negative hydrogen ion reconsidered. *Astronomy & Astrophysics* **193**, 189–192 (1988).
104. Piskunov, N. E., Kupka, F., Ryabchikova, T. A., Weiss, W. W. & Jeffery, C. S. VALD: The Vienna Atomic Line Data Base. *Astronomy & Astrophysics Supplement Series* **112**, 525 (1995).
105. Burrows, A. & Volobuyev, M. Calculations of the far-wing line profiles of sodium and potassium in the atmospheres of substellar-mass objects. *The Astrophysical Journal* **583**, 985–995 (2003).

106. Polyansky, O. L. *et al.* ExoMol molecular line lists XXX: a complete high-accuracy line list for water. *Monthly Notices of the Royal Astronomical Society* **480**, 2597–2608 (2018).
107. Rothman, L. S. *et al.* HITEMP, the high-temperature molecular spectroscopic database. *J. Quant. Spec. Radiat. Transf.* **111**, 2139–2150 (2010).
108. Yurchenko, S. N. & Tennyson, J. ExoMol line lists IV. The rotationvibration spectrum of methane up to 1500 k. *Monthly Notices of the Royal Astronomical Society* **440**, 1649–1661 (2014).
109. Coles, P. A., Yurchenko, S. N. & Tennyson, J. ExoMol molecular line lists XXXV. A rotation-vibration line list for hot ammonia. *Monthly Notices of the Royal Astronomical Society* **490**, 4638–4647 (2019).
110. Barber, R. J. *et al.* ExoMol line lists III. An improved hot rotation-vibration line list for HCN and HNC. *Monthly Notices of the Royal Astronomical Society* **437**, 1828–1835 (2013).
111. McKemmish, L. K. *et al.* ExoMol Molecular line lists - XXXIII. The spectrum of Titanium Oxide. *Monthly Notices of the Royal Astronomical Society* **488**, 2836–2854 (2019).
112. McKemmish, L. K., Yurchenko, S. N. & Tennyson, J. ExoMol line lists - XVIII. The high-temperature spectrum of VO. *Monthly Notices of the Royal Astronomical Society* **463**, 771–793 (2016).
113. Wende, S., Reiners, A., Seifahrt, A. & Bernath, P. F. CRIRES spectroscopy and empirical line-by-line identification of FeH molecular absorption in an M dwarf. *Astronomy and Astrophysics* **523**, A58 (2010).
114. Stock, J. W., Kitzmann, D. & Patzer, A. B. C. FASTCHEM 2 : an improved computer program to determine the gas-phase chemical equilibrium composition for arbitrary element distributions. *Monthly Notices of the Royal Astronomical Society* **517**, 4070–4080 (2022).
115. Pelletier, S. *et al.* Where Is the Water? Jupiter-like C/H Ratio but Strong H₂O Depletion Found on τ Boötis b Using SPIRou. *The Astronomical Journal* **162**, 73 (2021).
116. Rocchetto, M., Waldmann, I. P., Venot, O., Lagage, P.-O. & Tinetti, G. EXPLORING BIASES OF ATMOSPHERIC RETRIEVALS IN SIMULATED JWST TRANSMISSION SPECTRA OF HOT JUPITERS. *The Astrophysical Journal* **833**, 120 (2016).
117. Castelli, F. & Kurucz, R. L. New grids of ATLAS9 model atmospheres. (2004).
118. Gandhi, S. & Madhusudhan, N. Retrieval of exoplanet emission spectra with HyDRA. *Monthly Notices of the Royal Astronomical Society* **474**, 271–288 (2018).
119. Piette, A. A. A., Madhusudhan, N. & Mandell, A. M. HyDRo: atmospheric retrieval of rocky exoplanets in thermal emission. *Monthly Notices of the Royal Astronomical Society* **511**, 2565–2584 (2022).

120. MacDonald, R. J. & Madhusudhan, N. HD 209458b in new light: evidence of nitrogen chemistry, patchy clouds and sub-solar water. *Monthly Notices of the Royal Astronomical Society* **469**, 1979–1996 (2017).
121. MacDonald, R. J. POSEIDON: A Multidimensional Atmospheric Retrieval Code for Exoplanet Spectra. *Journal of Open Source Software* **8**, 4873 (2023).
122. Feroz, F., Hobson, M. P. & Bridges, M. MULTINEST: an efficient and robust Bayesian inference tool for cosmology and particle physics. *Monthly Notices of the Royal Astronomical Society* **398**, 1601–1614 (2009).
123. Skilling, J. Nested sampling for general bayesian computation. *Bayesian Anal.* **1**, 833–859 (2006).
124. Richard, C. *et al.* New section of the HITRAN database: Collision-induced absorption (CIA). *Journal of Quantitative Spectroscopy and Radiative Transfer* **113**, 1276–1285 (2012).
125. Harris, G. J., Tennyson, J., Kaminsky, B. M., Pavlenko, Ya. V. & Jones, H. R. A. Improved HCN/HNC linelist, model atmospheres and synthetic spectra for WZ Cas. *Monthly Notices of the Royal Astronomical Society* **367**, 400–406 (2006).
126. Dulick, M. *et al.* Line Intensities and Molecular Opacities of the FeH F $^4\Delta_i$ -X $^4\Delta_i$ Transition. *The Astrophysical Journal* **594**, 651–663 (2003).
127. Burrows, A. & Volobuyev, M. Calculations of the Far-Wing Line Profiles of Sodium and Potassium in the Atmospheres of Substellar-Mass Objects. *The Astrophysical Journal* **583**, 985–995 (2003).
128. Gandhi, S. & Madhusudhan, N. genesis: new self-consistent models of exoplanetary spectra. *Monthly Notices of the Royal Astronomical Society* **472**, 2334–2355 (2017).
129. Madhusudhan, N. & Seager, S. A Temperature and Abundance Retrieval Method for Exoplanet Atmospheres. *The Astrophysical Journal* **707**, 24–39 (2009).
130. Burrows, A. & Sharp, C. M. Chemical Equilibrium Abundances in Brown Dwarf and Extrasolar Giant Planet Atmospheres. *The Astrophysical Journal* **512**, 843–863 (1999).
131. Madhusudhan, N., Mousis, O., Johnson, T. V. & Lunine, J. I. Carbon-rich Giant Planets: Atmospheric Chemistry, Thermal Inversions, Spectra, and Formation Conditions. *The Astrophysical Journal* **743**, 191 (2011).
132. Piette, A. A. A. *et al.* Assessing spectra and thermal inversions due to TiO in hot Jupiter atmospheres. *Monthly Notices of the Royal Astronomical Society* **496**, 3870–3886 (2020).
133. Evans, T. M. *et al.* An ultrahot gas-giant exoplanet with a stratosphere. *Nature* **548**, 58–61 (2017).
134. Fortney, J. J., Lupu, R. E., Morley, C. V., Freedman, R. S. & Hood, C. Exploring a Photospheric Radius Correction to Model Secondary Eclipse Spectra for Transiting Exoplanets. *The Astrophysical Journal Letters* **880**, L16 (2019).

135. Taylor, J. Impact of variable photospheric radius on exoplanet atmospheric retrievals. *Monthly Notices of the Royal Astronomical Society* **513**, L20–L24 (2022).
136. MacDonald, R. J. & Lewis, N. K. TRIDENT: A Rapid 3D Radiative-transfer Model for Exoplanet Transmission Spectra. *The Astrophysical Journal* **929**, 20 (2022).
137. Karman, T. *et al.* Update of the HITRAN collision-induced absorption section. *Icarus* **328**, 160–175 (2019).
138. Li, G. *et al.* Rovibrational Line Lists for Nine Isotopologues of the CO Molecule in the $X^1\Sigma^+$ Ground Electronic State. *The Astrophysical Journal Supplement Series* **216**, 15 (2015).
139. Tashkun, S. A. & Perevalov, V. I. CDSD-4000: High-resolution, high-temperature carbon dioxide spectroscopic databank. *Journal of Quantitative Spectroscopy and Radiative Transfer* **112**, 1403–1410 (2011).
140. Barber, R. J. *et al.* ExoMol line lists - III. An improved hot rotation-vibration line list for HCN and HNC. *Monthly Notices of the Royal Astronomical Society* **437**, 1828–1835 (2014).
141. Brooke, J. S. A. *et al.* Line strengths of rovibrational and rotational transitions in the $X^2\Pi$ ground state of OH. *Journal of Quantitative Spectroscopy and Radiative Transfer* **168**, 142–157 (2016).
142. Ryabchikova, T. *et al.* A major upgrade of the VALD database. *Physica Scripta* **90**, 054005 (2015).
143. Malik, M. *et al.* HELIOS: An Open-source, GPU-accelerated Radiative Transfer Code for Self-consistent Exoplanetary Atmospheres. *The Astronomical Journal* **153**, 56 (2017).
144. Malik, M. *et al.* Self-luminous and Irradiated Exoplanetary Atmospheres Explored with HELIOS. *The Astronomical Journal* **157**, 170 (2019).
145. Tsai, S.-M. *et al.* VULCAN: An Open-source, Validated Chemical Kinetics Python Code for Exoplanetary Atmospheres. *The Astrophysical Journal Supplement Series* **228**, 20 (2017).
146. Tsai, S.-M. *et al.* A comparative study of atmospheric chemistry with VULCAN. *The Astrophysical Journal* **923**, 264 (2021).
147. Zhang, M., Chachan, Y., Kempton, E. M.-R. & Knutson, H. A. Forward modeling and retrievals with PLATON, a fast open-source tool. *Publications of the Astronomical Society of the Pacific* **131**, 034501 (2019).
148. Zhang, M. & Chachan, Y. PLATON GitHub repository. https://github.com/ideasrule/platon/tree/custom_abundances (2022).
149. Grimm, S. L. & Heng, K. HELIOS-k: An ultrafast, open-source opacity calculator for radiative transfer. *The Astrophysical Journal* **808**, 182 (2015).
150. Grimm, S. L. *et al.* HELIOS-k 2.0 opacity calculator and open-source opacity database for exoplanetary atmospheres. *The Astrophysical Journal Supplement Series* **253**, 30 (2021).

151. Parmentier, V., Showman, A. P. & Lian, Y. 3D mixing in hot jupiters atmospheres-i. Application to the day/night cold trap in HD 209458b. *Astronomy & Astrophysics* **558**, A91 (2013).
152. Smith, M. D. Estimation of a length scale to use with the quench level approximation for obtaining chemical abundances. *Icarus* **132**, 176–184 (1998).
153. Lewis, N. K. *et al.* Atmospheric circulation of eccentric hot neptune GJ436b. *The Astrophysical Journal* **720**, 344 (2010).
154. Rugheimer, S., Kaltenegger, L., Zsom, A., Segura, A. & Sasselov, D. Spectral Fingerprints of Earth-like Planets Around FGK Stars. *Astrobiology* **13**, 251–269 (2013).
155. Kurucz, R. L. Model atmospheres for g, f, a, b, and o stars. *The Astrophysical Journal Supplement Series* **40**, 1–340 (1979).
156. Showman, A. P. *et al.* Atmospheric Circulation of Hot Jupiters: Coupled Radiative-Dynamical General Circulation Model Simulations of HD 189733b and HD 209458b. *The Astrophysical Journal* **699**, 564–584 (2009).
157. Adcroft, A., Campin, J.-M., Hill, C. & Marshall, J. Implementation of an Atmosphere-Ocean General Circulation Model on the Expanded Spherical Cube. *Monthly Weather Review* **132**, 2845–2863 (2004).
158. Marley, M. S. & McKay, C. P. Thermal Structure of Uranus' Atmosphere. *Icarus* **138**, 268–286 (1999).
159. Freedman, R. S. *et al.* Gaseous Mean Opacities for Giant Planet and Ultracool Dwarf Atmospheres over a Range of Metallicities and Temperatures. *The Astrophysical Journal Supplement Series* **214**, 25 (2014).
160. Lodders, K. & Fegley, B. Atmospheric Chemistry in Giant Planets, Brown Dwarfs, and Low-Mass Dwarf Stars. I. Carbon, Nitrogen, and Oxygen. *Icarus* **155**, 393–424 (2002).
161. Visscher, C., Lodders, K. & Fegley, B., Jr. Atmospheric Chemistry in Giant Planets, Brown Dwarfs, and Low-Mass Dwarf Stars. II. Sulfur and Phosphorus. *The Astrophysical Journal* **648**, 1181–1195 (2006).
162. Lee, E. K. H. *et al.* Simulating gas giant exoplanet atmospheres with EXO-FMS: comparing semigrey, picket fence, and correlated-k radiative-transfer schemes. *Monthly Notices of the Royal Astronomical Society* **506**, 2695–2711 (2021).
163. Rauscher, E. & Menou, K. THREE-DIMENSIONAL ATMOSPHERIC CIRCULATION MODELS OF HD 189733b AND HD 209458b WITH CONSISTENT MAGNETIC DRAG AND OHMIC DISSIPATION. *The Astrophysical Journal* **764**, 103 (2013).
164. Beltz, H. *et al.* Magnetic Drag and 3-D Effects in Theoretical High-Resolution Emission Spectra of Ultrahot Jupiters: The Case of WASP-76b. (2022) doi:10.48550/arXiv.2204.12996.

165. Wakeford, H. R. *et al.* High-temperature condensate clouds in super-hot Jupiter atmospheres. *Monthly Notices of the Royal Astronomical Society* **464**, 4247–4254 (2016).

166. Ahrer, E.-M. *et al.* Early release science of the exoplanet WASP-39b with JWST NIRCam. *Nature* **614**, 653–658 (2023).

Acknowledgements This work is based on observations made with the NASA/ESA/CSA JWST. The data were obtained from the Mikulski Archive for Space Telescopes at the Space Telescope Science Institute, which is operated by the Association of Universities for Research in Astronomy, Inc., under NASA contract NAS 5-03127. These observations are associated with program JWST-ERS-01366. Support for this program was provided by NASA through a grant from the Space Telescope Science Institute. The results reported herein benefited during the design phase from collaborations and/or information exchange within NASA’s Nexus for Exoplanet System Science (NExSS) research coordination network sponsored by NASA’s Science Mission Directorate. L.-P.C. acknowledges funding by the Technologies for Exo-Planetary Science (TEPS) Natural Sciences and Engineering Research Council of Canada (NSERC) CREATE Trainee Program. M.M., R.J.M., and L.W. acknowledge support provided by NASA through the NASA Hubble Fellowship Program. A.D.F. acknowledges support from the National Science Foundation through the Graduate Research Fellowship Program. I.W. acknowledges support provided by NASA through the NASA Postdoctoral Program. B.V.R. acknowledges support from the 51 Pegasi b Fellowship funded by the Heising-Simons Foundation.

Author contributions All authors played a significant role in one or more of the following: development of the original proposal, management of the project, definition of the target list and observation plan, analysis of the data, theoretical modeling, and preparation of this manuscript. Some specific contributions are listed as follows. N.M.B., J.L.B., and K.B.S. provided overall program leadership and management. L.-P.C. and B.B. led the efforts for this manuscript. D.K.S., E.M.-R.K., H.A.K., H.R.W., I.J.M.C., J.L.B., J.-M.D., K.B.S., L.K., M.L.-M., M.R.L., N.M.B., N.C., V.P., and Z.K.B.-T. made significant contributions to the design of the program. K.B.S. generated the observing plan with input from the team. N.E. provided instrument expertise. B.B., E.M.-R.K., H.R.W., I.J.M.C., J.L.B., L.K., M.L.-M., M.R.L., N.M.B., and Z.K.B.-T. led or co-led working groups and/or contributed to significant strategic planning efforts like the design and implementation of the pre-launch Data Challenges. A.L.C., D.K.S., N.E., N.P.G., and V.P. generated simulated data for pre-launch testing of methods. B.B., E.R., J.L.B., L.-P.C., T.D.K., and V.P. contributed significantly to the writing of this manuscript, along with contributions in the Methods from A.A.A.P., A.B.S., A.D.F., H.B., I.W., L.A.D.S., L.S.W., M.M., M.R., R.C., R.J.M., and X.T.. A.D.F., L.A.D.S., L.-P.C., and M.R. contributed to the development of data analysis pipelines and/or provided the data analysis products used in this analysis i.e., reduced the data, modeled the light curves, and/or produced the planetary spectrum. I.W. performed the updated TESS analysis. A.A.A.P., L.-P.C., L.S.W., and R.J.M. performed atmospheric retrievals on the planetary spectrum. M.H., M.M., N.T.L. and R.C. performed the secondary eclipse mapping analysis. E.K.H.L., H.B., L.-P.C., R.C., V.P., and X.T. provided GCM and/or post-processed GCM results used in this analysis. A.B.S. generated the disequilibrium chemistry models. H.S. and L.-P.C. produced the absolute flux calibrated stellar spectrum and performed the comparison to stellar models. L.-P.C., L.S.W., and R.C. generated figures for this manuscript. B.V.R., H.R.W., I.J.M.C., J.H., L.W., M.C.N., and X.Z. provided significant feedback to the manuscript and/or coordinated

comments from all other authors. A.S., C.C., C.P., E.-M.A., E.P., J.B., J.J.F., J.M.G., J.L., J.D.L., K.A., K.H., K.M., K.O., L.D., L.M., M.K.A., M.L., N.I., N.K.N., O.V., P.E.C., P.-O.L., P.-A.R., P.W., Q.C., S.L.C., S.K., S.R., S.-M.T., T.J.B., T.H., and T.M.-E. provided scientific and technical input to the manuscript.

Competing interests The authors declare that they have no competing interests

Additional information

Supplementary information

Correspondence and requests for materials Correspondence and requests for materials should be addressed to Louis-Philippe Coulombe. (email: louis-philippe.coulombe@umontreal.ca)

Peer review information

Reprints and permissions information is available at www.nature.com/reprints.

Extended Data Figure 1 | Spectrophotometric secondary eclipse light curves of WASP 18b. **a**, Raw light curves for all 408 spectrophotometric bins. **b**, Best-fit planetary flux measured from the light curve fits. **c**, Systematics subtracted from **a**, consisting of a linear trend and the detrending against the tilt event and the trace morphology changes. The jump around ~ 0.7 hours before mid-eclipse comes from the fit of the flux offset caused by the tilt event. **d**, Raw light curves after subtraction of the best-fit systematics model. Some of the detrended light curves show sudden flux variations between wavelength bins outside of eclipse caused by correlations between the astrophysical and systematics models. Those correlations are however considered when computing the spectrum as the F_p/F_s values are marginalized over the range of systematics model that fit the light curves.

Extended Data Figure 2 | Morphological changes of the spectral trace on the NIRISS detector as identified through PCA on the time series of the detector images. **a**, First principal component with its eigenvalues (left) and its corresponding eigenimage (right). The tilt event occurring near the 1336th integration can clearly be identified as the largest source of variance to the detector images. It results in a subtle change to the trace profile in the cross-dispersion direction, predominantly visible near its lower edge of the trace. **b**, Second principal component with its eigenvalues (left) and its corresponding eigenimage (right). The second principal component represents subtle changes in the y-position of the trace throughout the time series, with the two edges of the trace trading flux. **c**, Third principal component with its eigenvalues (left) and its corresponding eigenimage (right). The third component represents changes in the FWHM of the trace and shows a clear beat pattern in time. The eigenimage for this component shows a trade of flux between the center and the edges of the trace throughout the time series.

Extended Data Figure 3 | Spectra from the four individual reductions. Comparison of the brightness temperature spectra obtained by fitting with ExoTEP the four separate reductions and binned at a resolving power of $R = 50$. All data are plotted with their 1σ error bars. We overplot the best-fit SCARLET model (blue line) to the reductions for further comparison. All reductions are consistent within less than one standard deviation on average when compared at full resolution (408 bins).

Extended Data Figure 4 | Light curve residuals binned in time. **a**, Absolute root mean square (RMS) of the residuals as a function of bin size (black line) for the white light curve. The RMS values are plotted against the Poisson noise limit (red line), which goes down as the square root of the number of integrations contained in a single bin. We also show the theoretical 1σ error envelope of the Poisson noise. The residuals bin down to ~ 5 ppm for bins of 1 hour and show no evidence of a noise floor, similar to what was observed from commissioning data (Albert et al. submitted). The broadband residuals do not follow perfectly the Poisson noise, which is indicative of remaining time correlations. **b**, Normalized RMS of the 408 spectrophotometric light curves considered in the analysis. We observe that the residuals follow the Poisson noise limit from bin sizes of a single integration up to bins of ~ 1 hour, indicating that there are no time correlations in the residuals. We observe a slight decrease of the normalized RMS below the Poisson noise at larger bin sizes, similar to what was observed in the NIRCam and NIRSpect/G395H observations of WASP-39b^{22,166}.

Extended Data Figure 5 | Abundance constraints from the free chemistry retrievals. Probability posteriors of the deep abundance of various species considered for the free chemistry and temperature with (blue, HyDRA) and without (red, POSEIDON) thermal dissociation. We also show the median retrieved VMR profiles from the chemical equilibrium with free temperature-pressure profile retrieval (black line, SCARLET). The pressure range probed by the observations (~ 0.01 –1 bars, see Figure 3) is indicated by the dashed gray lines. The only species independently detected is H_2O , which is found to be consistent with the retrieved chemical equilibrium abundance when considering the effect of thermal dissociation. All other species considered are found to be unconstrained although consistent with chemical equilibrium predictions. The photosphere as predicted by our radiative-convective model is around 50 millibar, but the retrievals infer the deep molecular abundances.

Extended Data Figure 6 | WASP-18b's brightness temperature spectrum fit and source of the thermal inversion. **a**, The dark blue line indicates the chemical equilibrium median fit to the NIRISS data with its 1σ error bars (black points), with shaded blue regions showing the 1σ and 2σ credible intervals in the retrieved spectrum (medium and light blue, respectively). The spectra are extrapolated to the TESS (visible wavelengths) and the Spitzer/IRAC measurements (3.6 and $4.5\ \mu\text{m}$) observations (gray points) considering the same atmospheric parameters. **b**, Best-fit radiative-convective model temperature-pressure profile together with radiative-convective solutions where specific species known to create a thermal inversion are removed from the

atmosphere. Absorption by atomic iron contributes to the thermal inversion at pressures lower than 1.0 millibar, whereas TiO is responsible for the thermal inversion seen between 0.1 and 0.01 bar. SiO contributes at pressures lower than 0.1 bar. **c**, Best-fit radiative-convective brightness temperature spectrum (excluding area fraction) and resulting spectra when removing specific species. As shown by the change from emission to absorption features in the spectra when TiO is removed, the TiO-induced thermal inversion is the one probed by our observations.

Extended Data Figure 7 | Light-curve predictions from GCMs. **a**, GCM light curves compared against the data and the best-fitting eclipse-mapping model. **b**, Data and the GCM light curves with the eclipse-mapping model subtracted. The GCMs with strong atmospheric drag (RM-GCM $B = 20$ G and SPARC/MITgcm $\tau_{\text{drag}} = 10^3$ s) match the data better than their counterparts that have little to no drag.

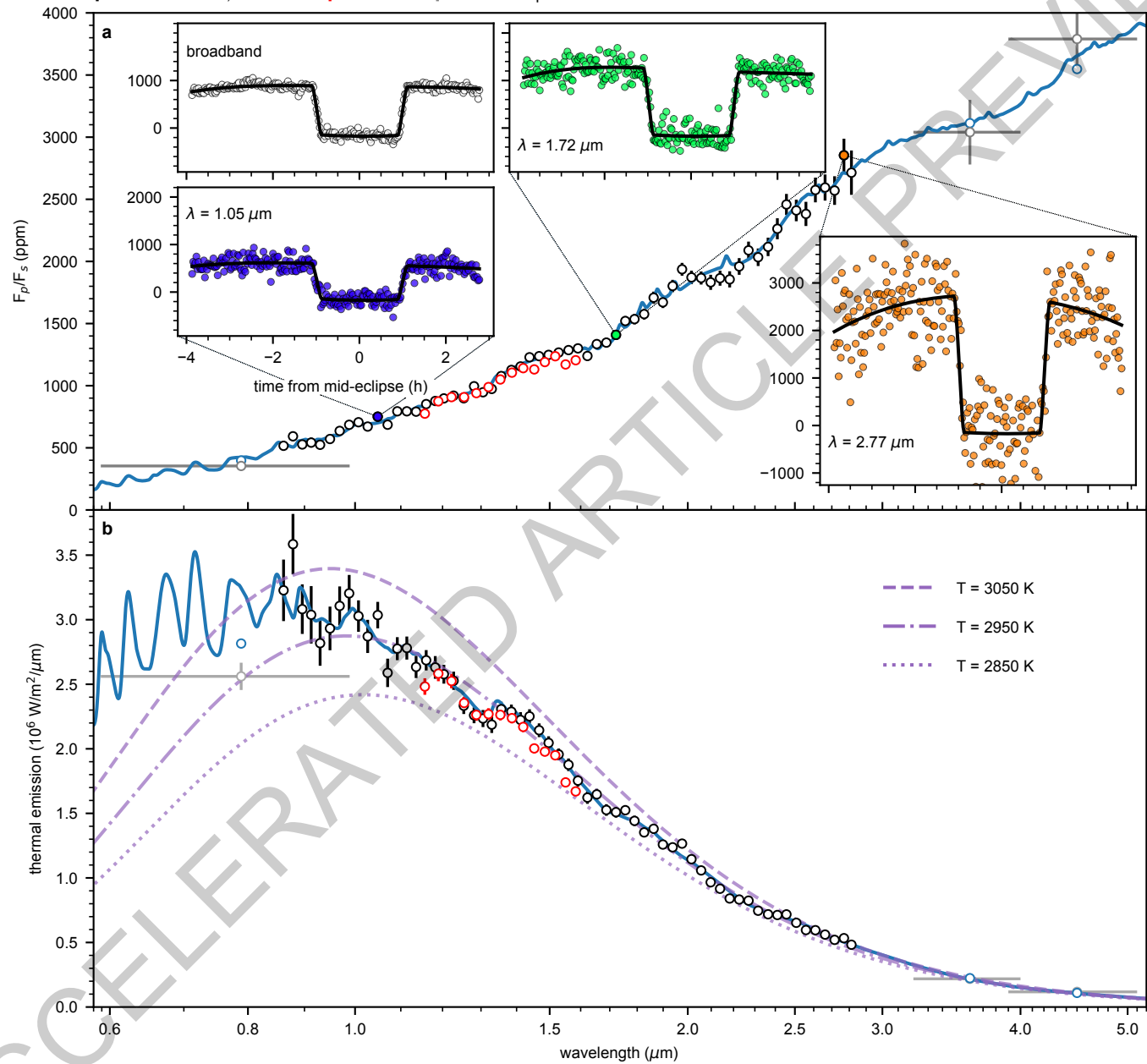
Extended Data Figure 8 | Components of the eclipse mapping fit. **a**, This column shows the light-curve components of the eclipse-mapping fit for $l_{\text{max}}=5$, $N=5$, overplotted on the data, which have been binned by a factor of 20 for clarity. From top to bottom, each light-curve component is subtracted off from the data to illustrate the features which are fit by each component, such that the top row is the full white-light light curve and the bottom row is the model residuals. The white light curve points are plotted with their 1σ error bars. Note that all components are fit simultaneously. **b**, The same as column **a**, zoomed in to the ingress and egress of the eclipse to highlight the fine features fit by each component. **c**, The eigenmaps associated with the corresponding components in column **a** and **b** that, when integrated, generate those light curves. Each map has been scaled by its best-fitting weight, such that a sum of this column would produce the best-fitting map.

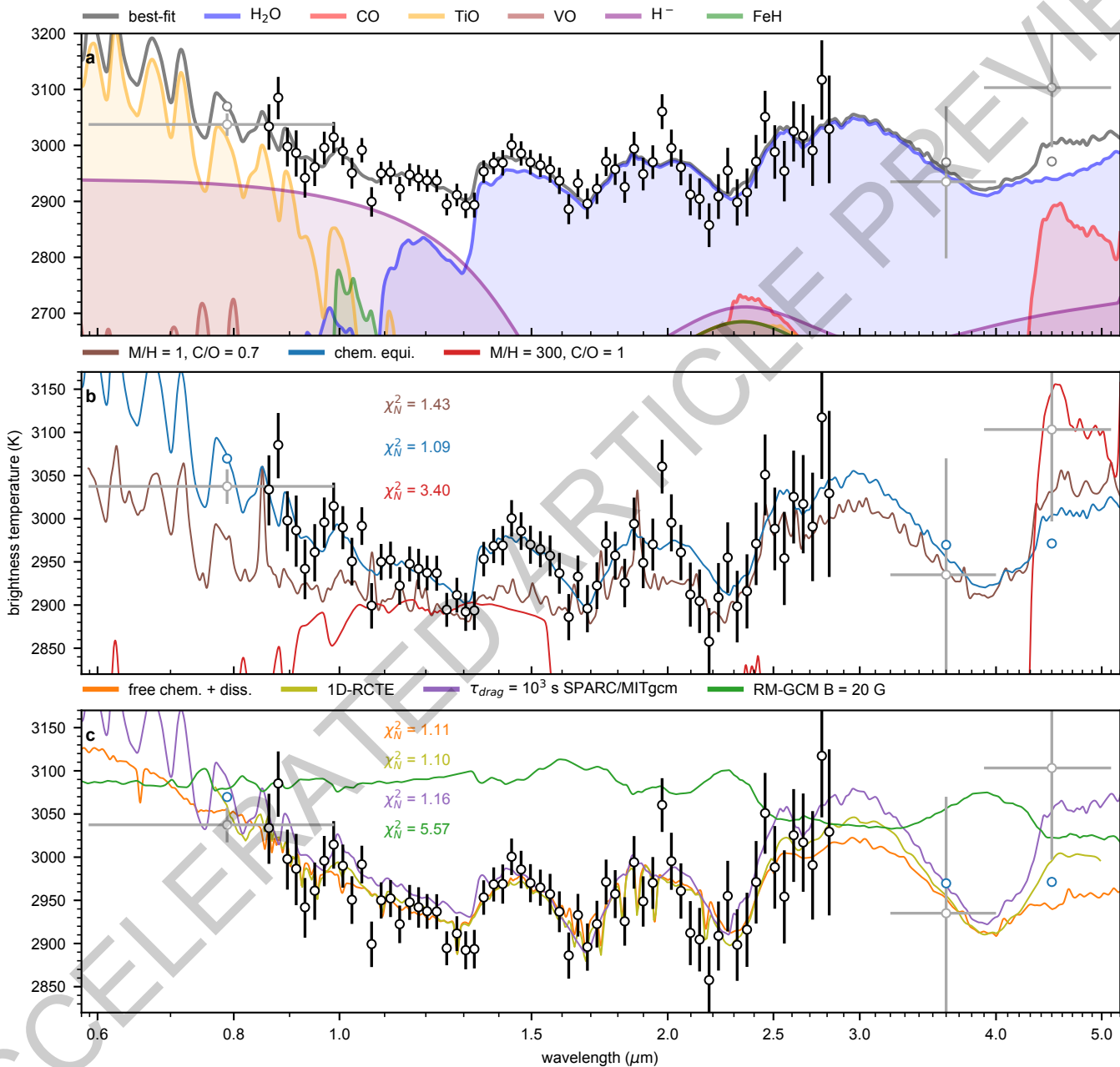
Extended Data Figure 9 | Latitudinal structure in the eclipse map. **a**, Ingress of the eclipse, with two models over-plotted and a 1096 ppm (white-light planet flux at mid-eclipse) uniform planet model subtracted to highlight deviations. The data (small dots) have been binned by a factor of five (dots with 1σ error bars) for clarity. The blue model is the eclipse map for $l_{\text{max}}=5$, $N=5$ presented in the text. The red model uses a constant-with-latitude Fourier series as the basis set, rather than spherical harmonics, to investigate constraints on latitudinal aspects of the map. Shaded regions denote 1, 2, and 3 σ quantiles. **b**, Same as **a** but for the eclipse egress. **c**, Planetary flux along the equator for the same two models. Note that, regardless of basis functions, we retrieve the same longitudinal structure, giving us confidence in the longitudinal brightness distribution. **d**, Same as **c** but along the substellar meridian. Both models fit the data well but find different latitudinal structure, indicating that we are unable to constrain latitudinal variation.

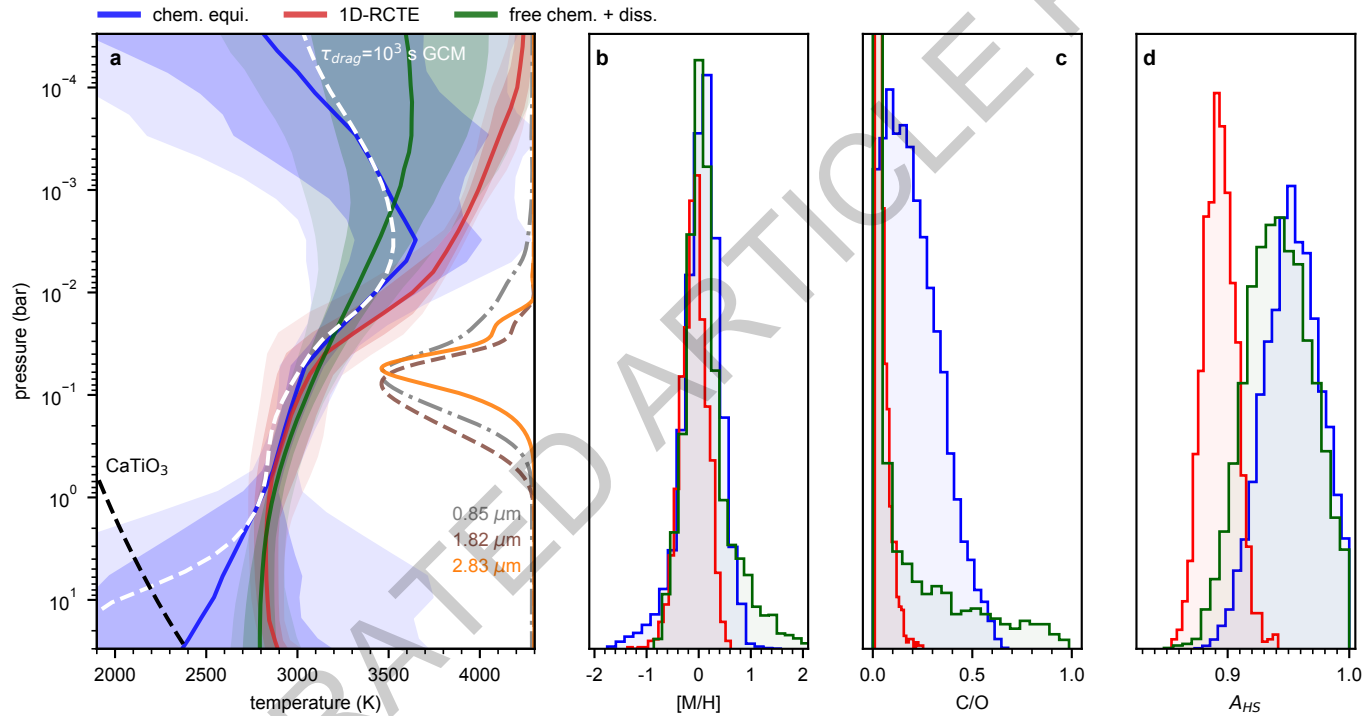
Extended Data Table 1 | TESS and JWST NIRISS/SOSS fit results. The median and 1σ uncertainties of the astrophysical parameters from the TESS (left column) and JWST NIRISS/SOSS (right column) analyses of WASP-18. The transit observations in the TESS phase curve are fitted considering the u_1 and u_2 quadratic limb-darkening coefficients. In our TESS phase curve parameterization, the secondary eclipse depth and nightside flux are derived parameters calculated from the average relative planetary flux f_p and the planet's phase curve semi-amplitude

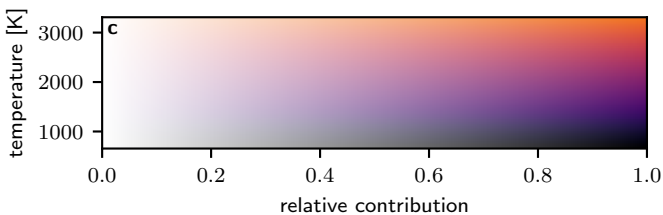
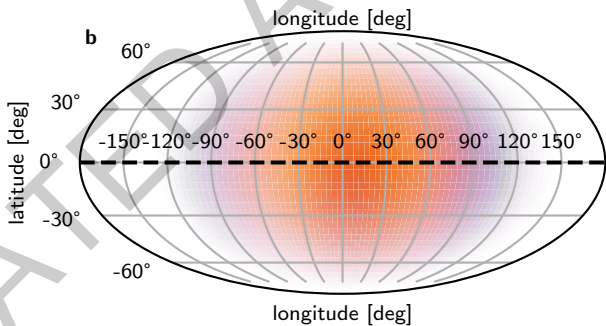
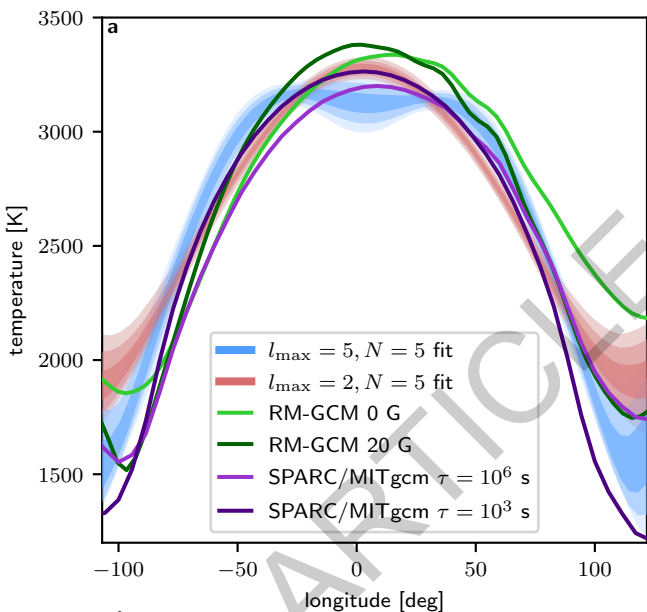
F_{atm} . Likewise, the orbital inclination i is derived from the scaled semi-major axis a/R_* and the impact parameter b . The parameters fixed to the values from the TESS analysis for the NIRISS/SOSS light curve fitting are shown without uncertainties in the table. The retrieved parameters are the time of secondary eclipse T_{sec} , the impact parameter b , and the semi-major axis a/R_* , the latter two being fitted considering normal priors from the TESS constraints. The NIRISS/SOSS eclipse depth is derived from the samples of the astrophysical model (Eq. 4).

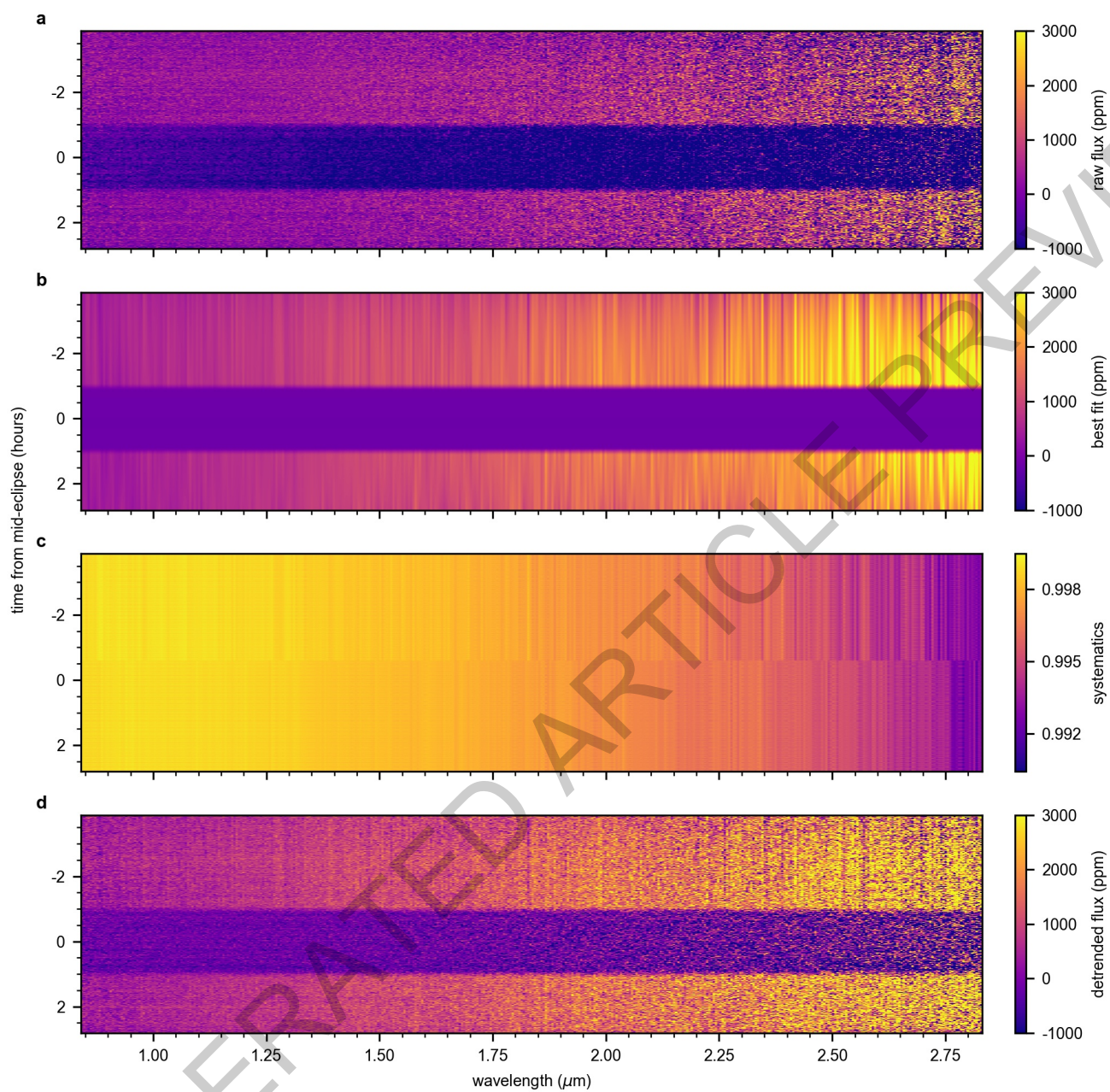
◻ NIRISS/SOSS, R = 50 ◻ HST ◻ TESS + Spitzer



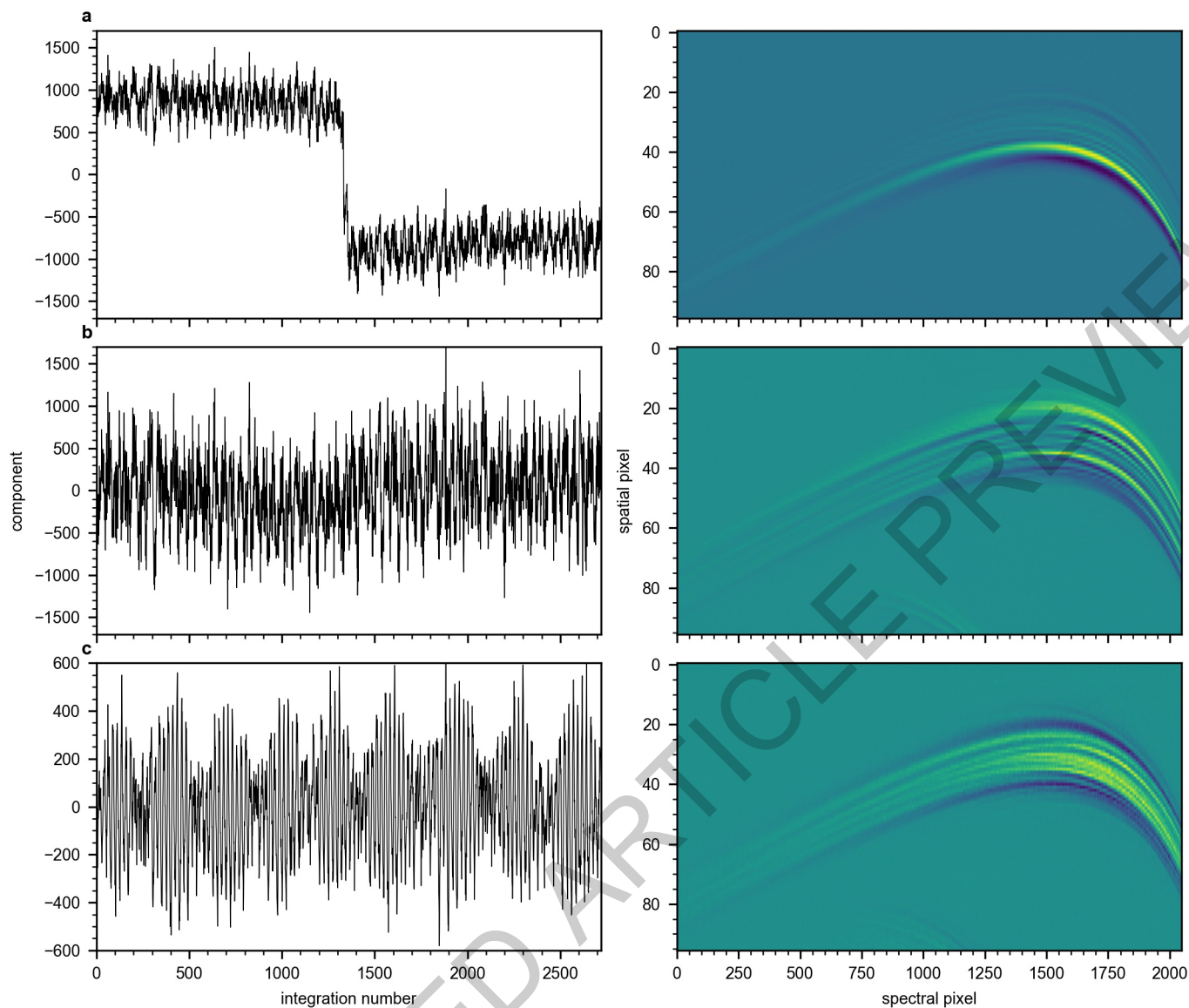




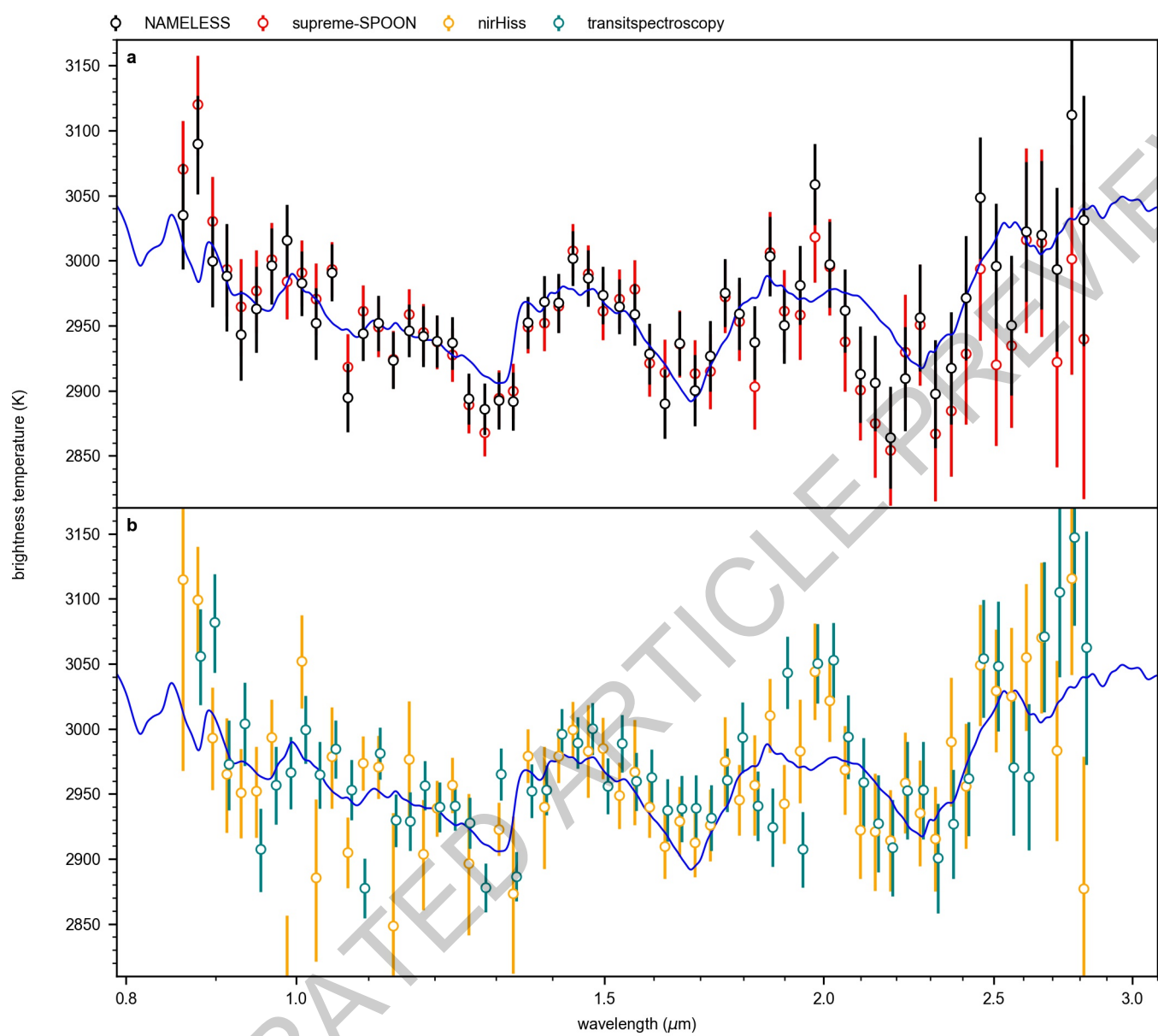




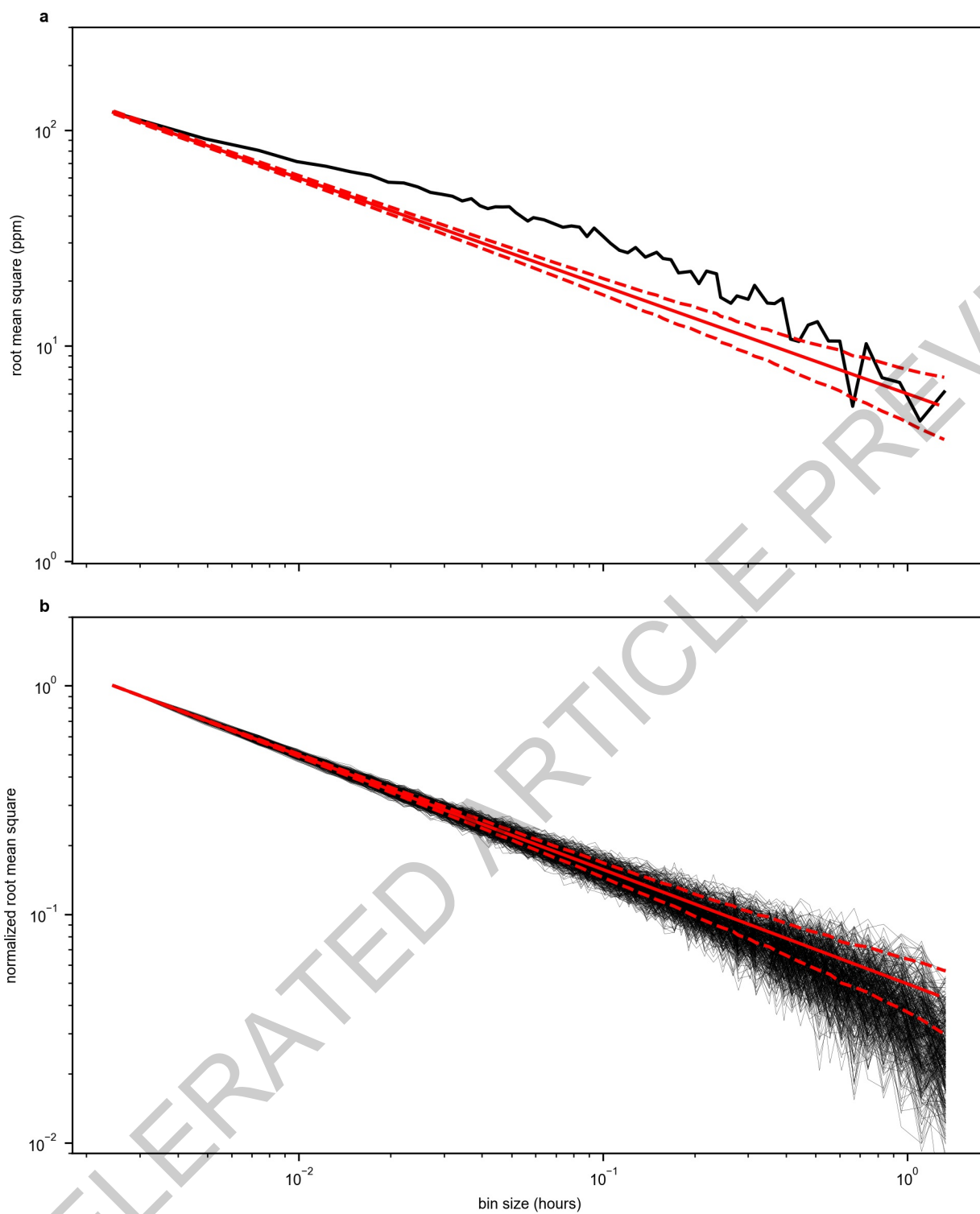
Extended Data Fig. 1



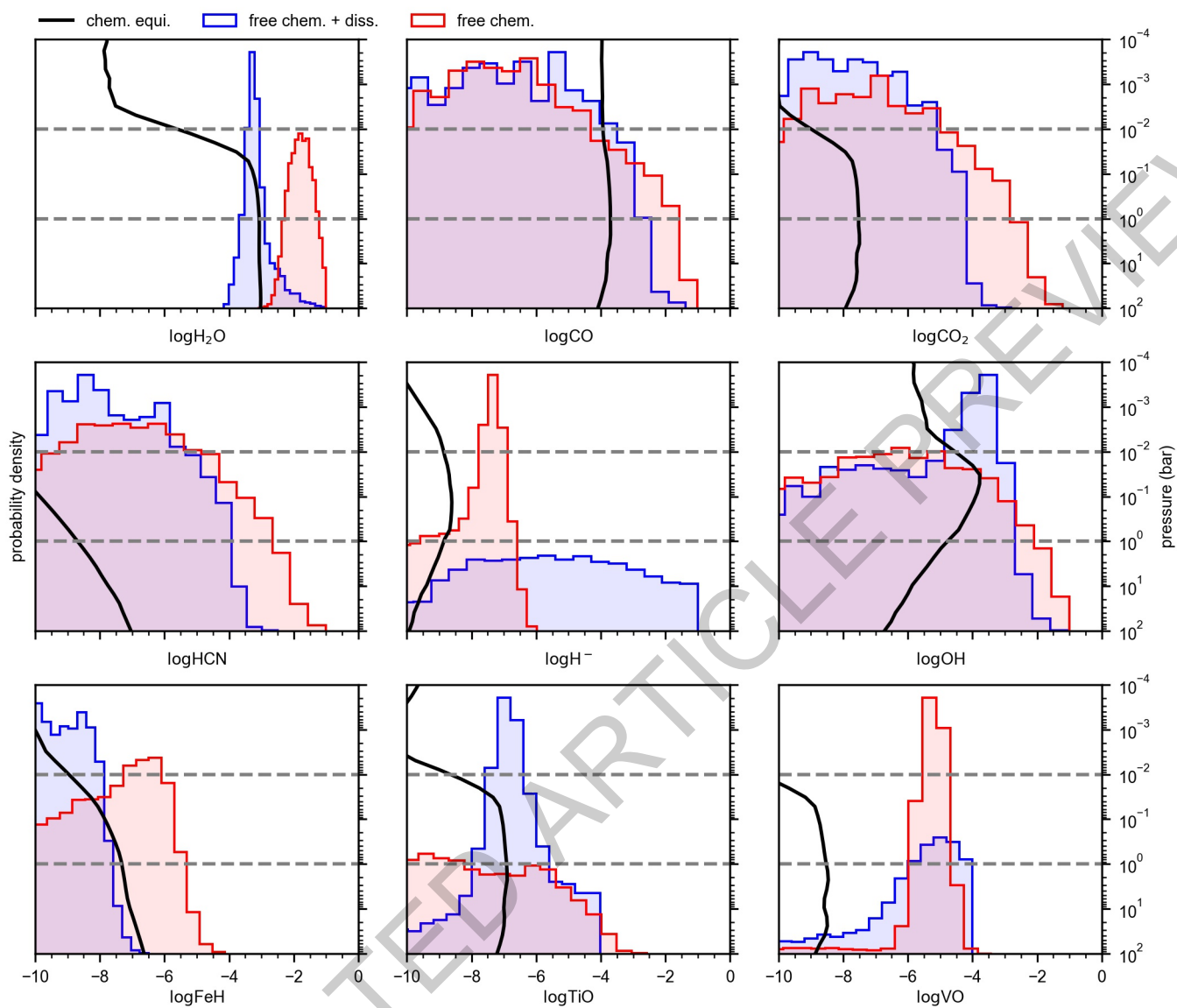
Extended Data Fig. 2



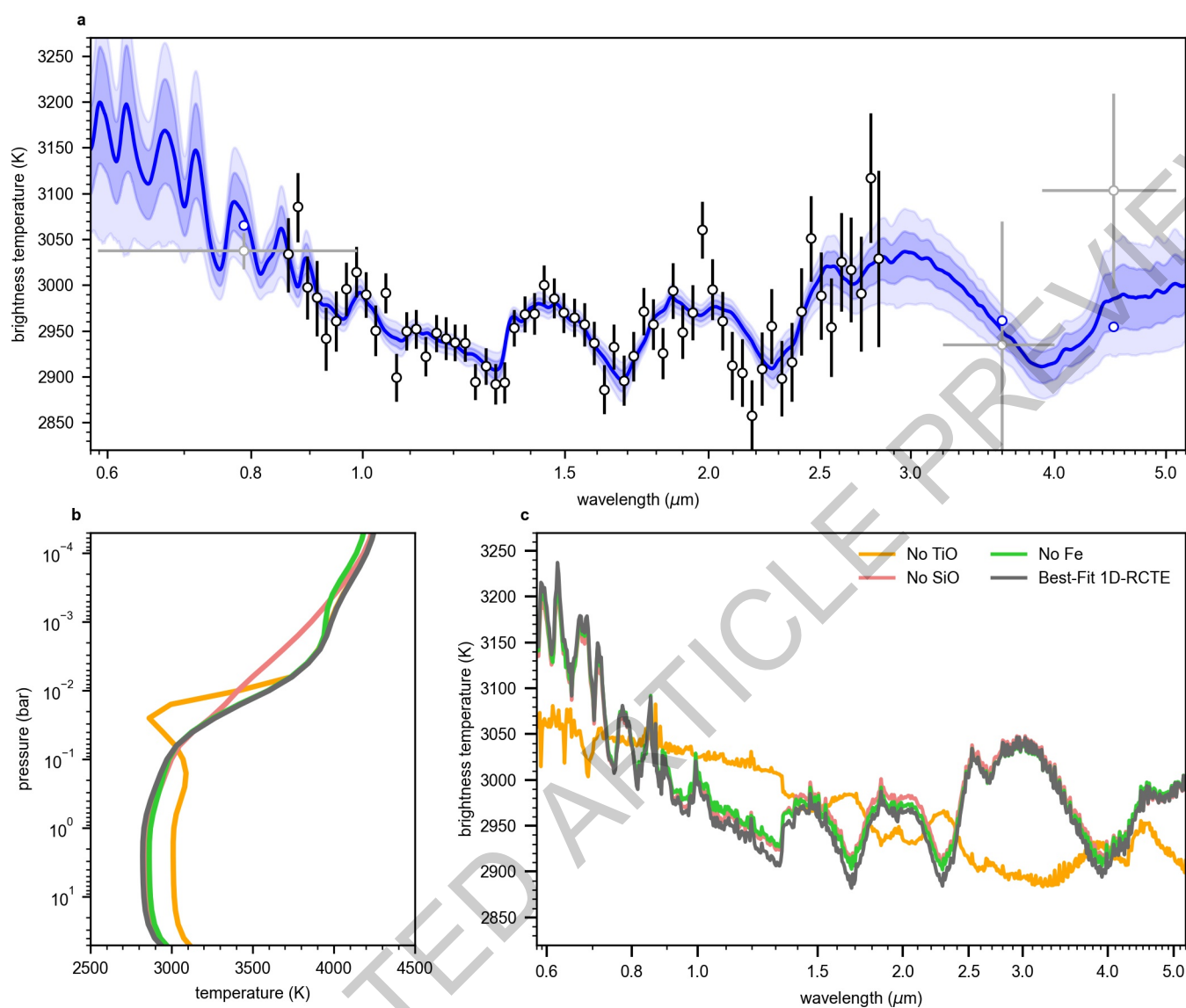
Extended Data Fig. 3



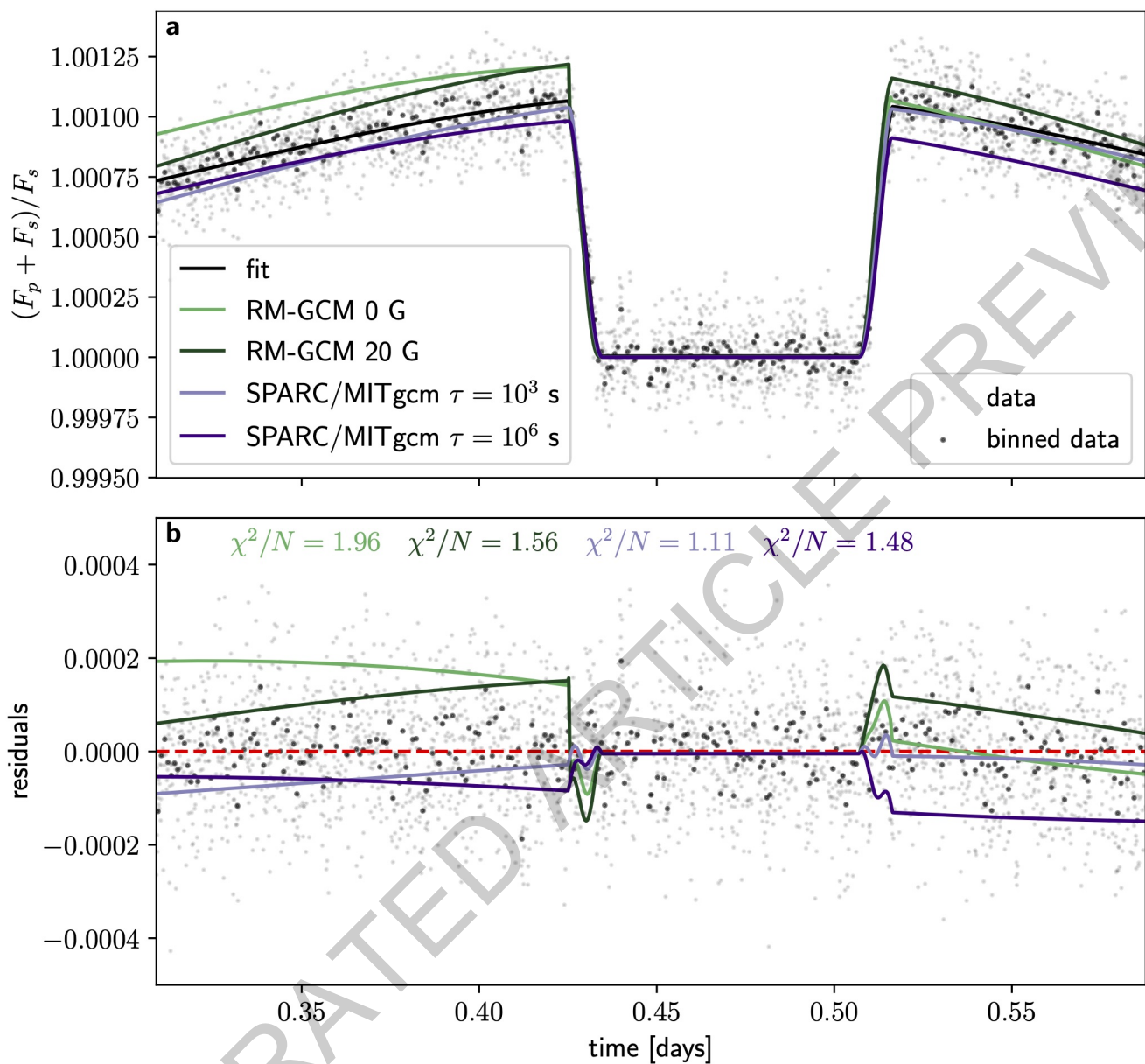
Extended Data Fig. 4



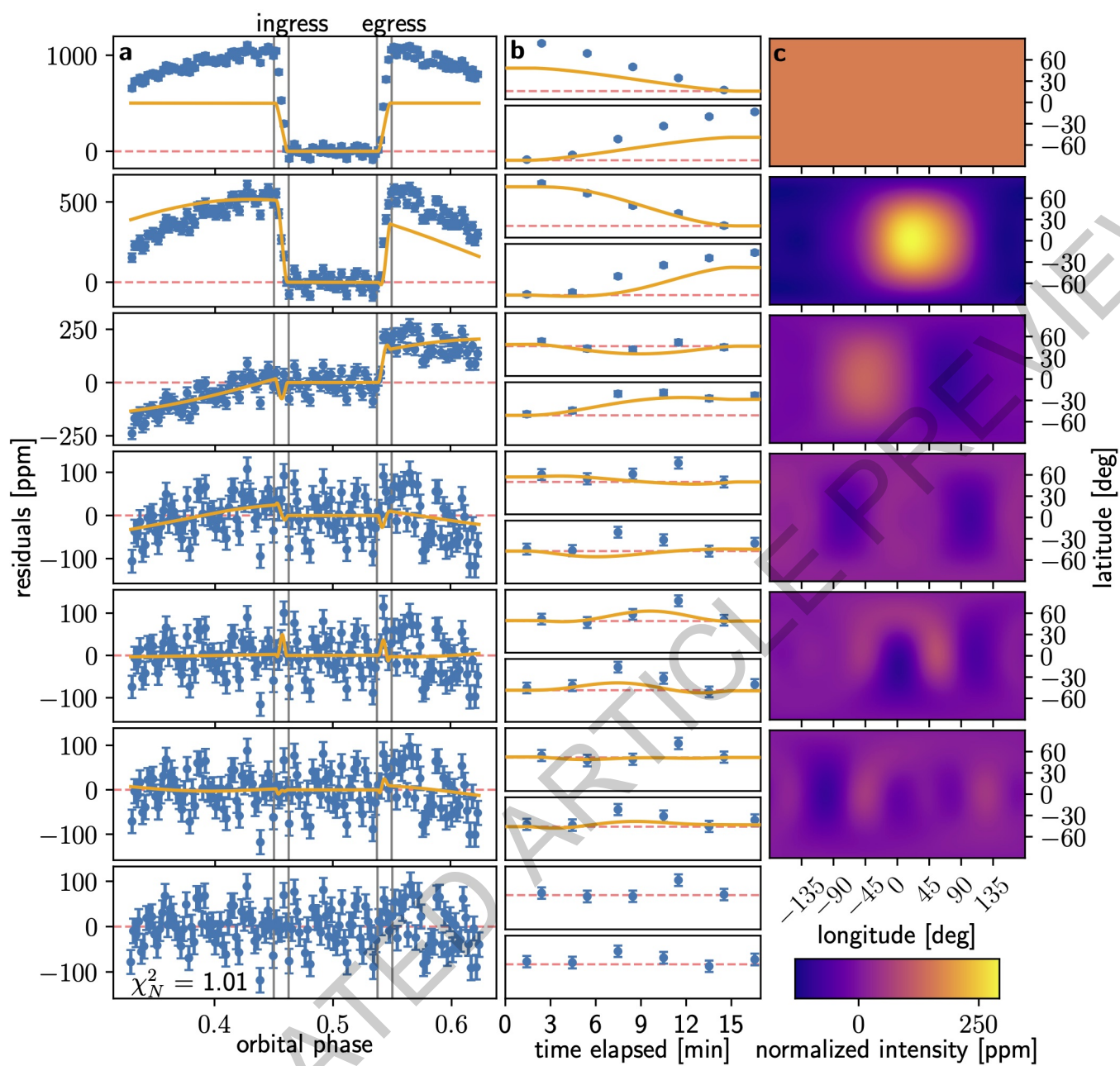
Extended Data Fig. 5



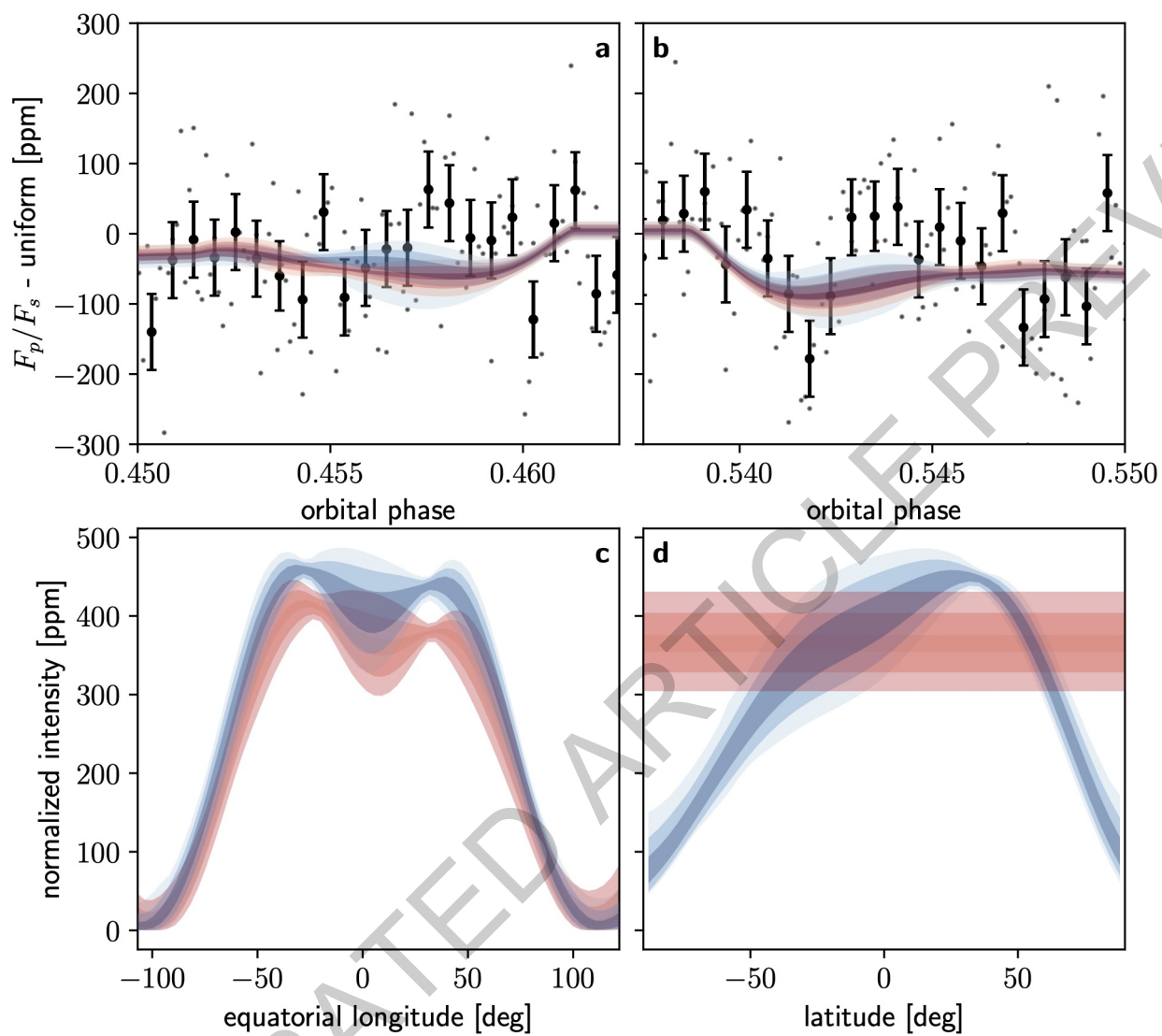
Extended Data Fig. 6



Extended Data Fig. 7



Extended Data Fig. 8



Extended Data Fig. 9

Parameter	TESS	JWST NIRISS/SOSS
R_p/R_*	0.09783 ± 0.00028	0.09783
T_0 [BJD _{TDB}]	$2458747.985032 \pm 0.000027$	—
T_{sec} [BJD _{TDB}]	—	$2459802.881867 \pm 0.000092$
P [days]	$0.941452382 \pm 0.000000069$	0.941452382
b	0.360 ± 0.026	0.340 ± 0.018
a/R_*	3.496 ± 0.029	3.483 ± 0.021
u_1	0.290 ± 0.032	—
u_2	0.169 ± 0.061	—
\bar{f}_p [ppm]	180 ± 13	—
F_{atm} [ppm]	177.5 ± 5.7	—
D [ppm]	21.8 ± 5.2	21.8
E [ppm]	172.2 ± 5.6	172.2
Eclipse depth [ppm]	357 ± 14	1096 ± 38
Nightside flux [ppm]	2 ± 14	—
i [deg]	84.09 ± 0.47	84.39 ± 0.30

Extended Data Table 1