

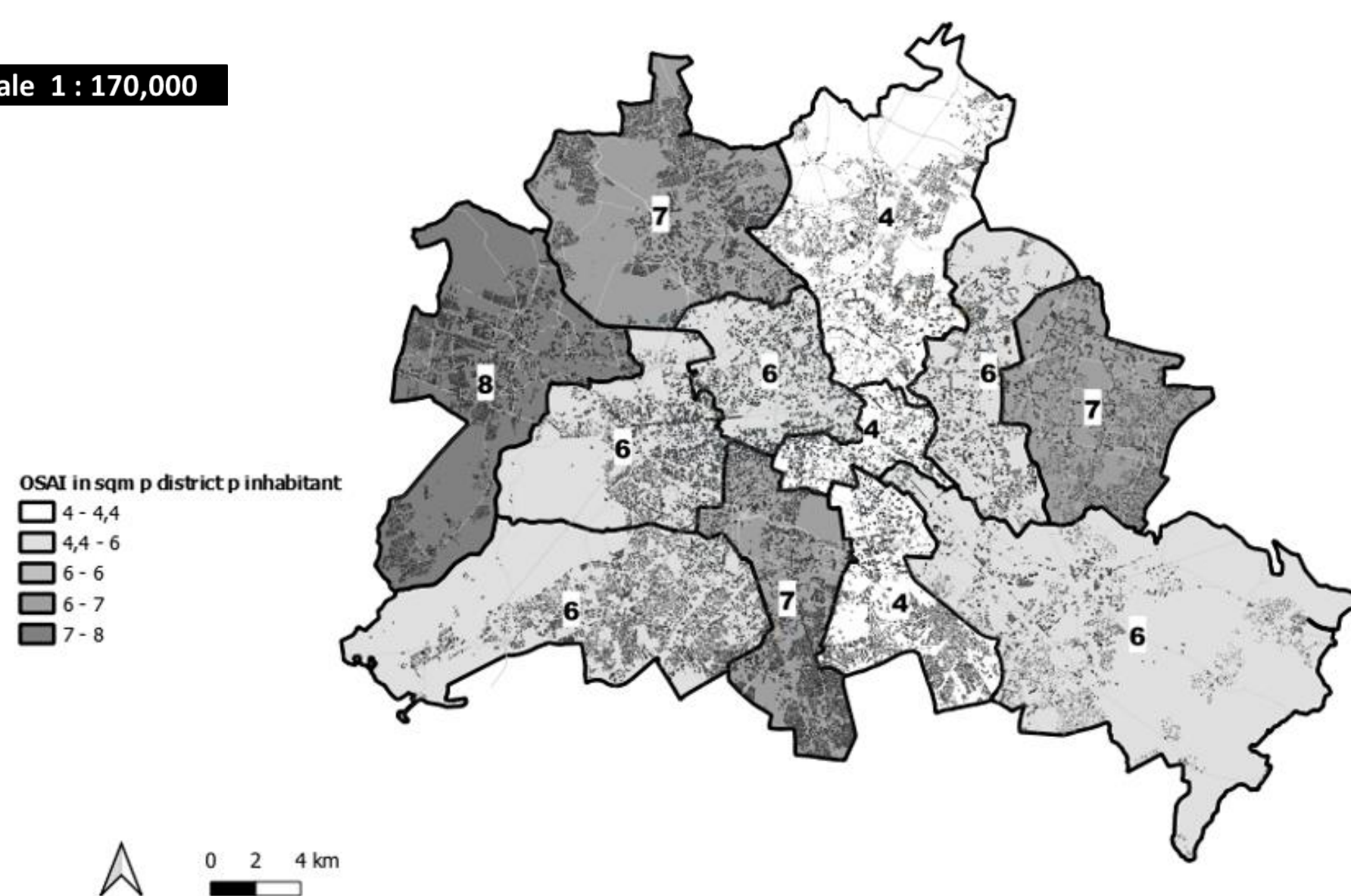


Alexander Czeh, DLR Institute for Transport Research

# The Potential Of The Traffic Transformation For The Housing Market

The land consumption of OSAI is between 4 to 8 sqm. per inhabitant per district. The map below shows that the land consumption through OSAI per inhabitant is especially high in outer districts of Berlin.

Scale 1 : 170,000

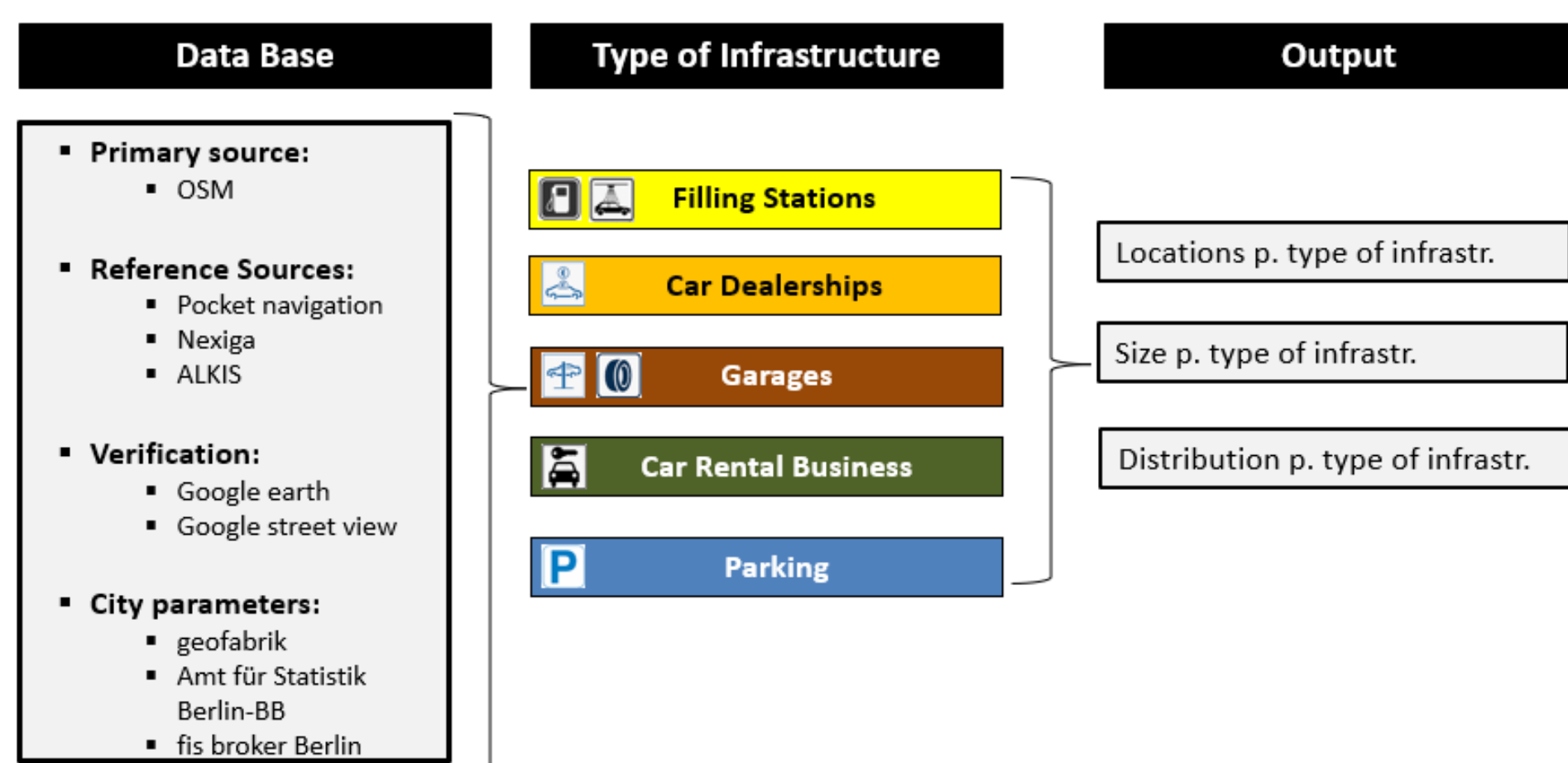


## More Housing due to Traffic Transformation?

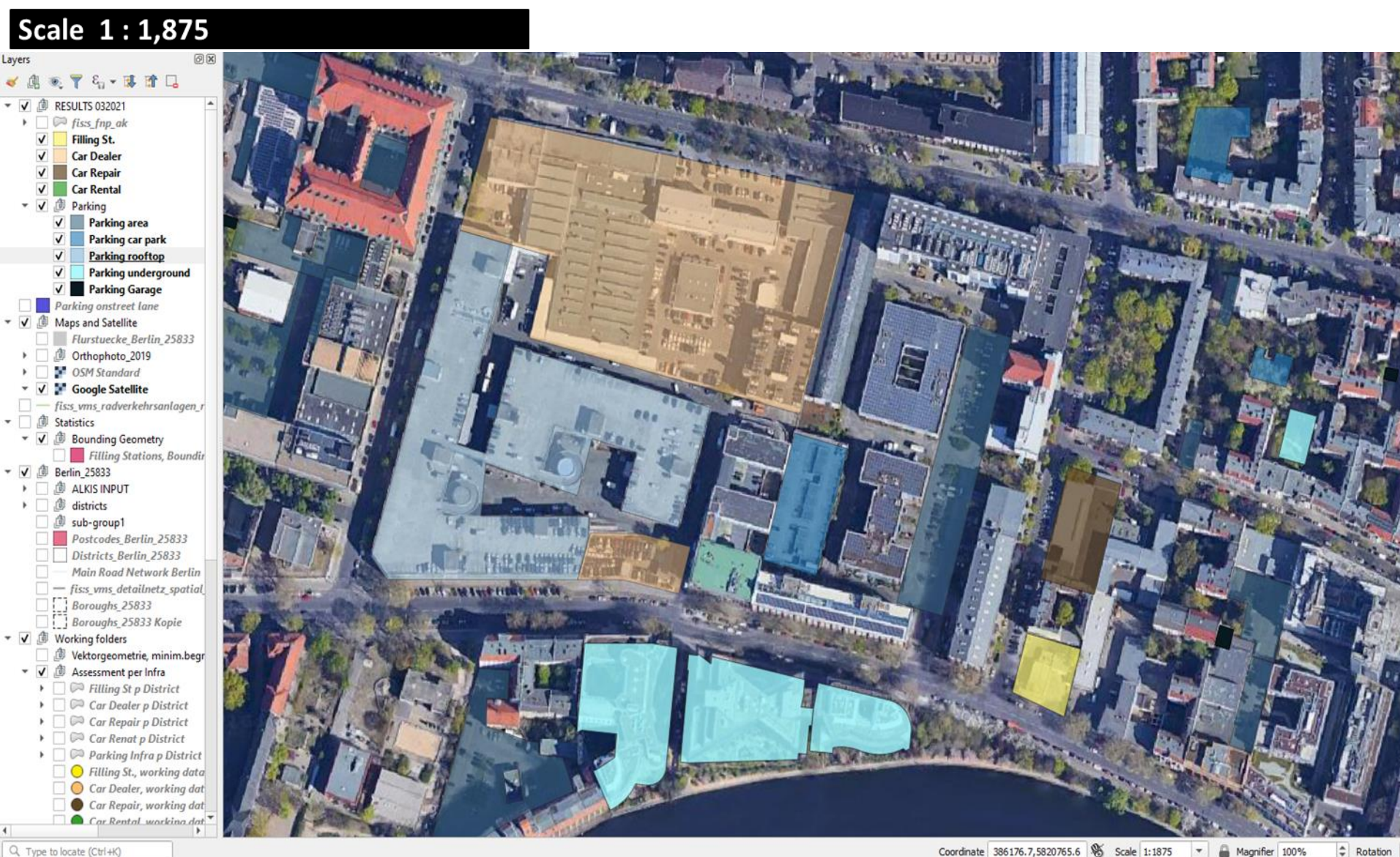
Research so far has focused on road space consumption through automobile infrastructure. To analyse the potential of the traffic transformation for the housing market, I assessed the land consumption of off-street automobile infrastructure (OSAI), using the example of Berlin.

## Methodology of the Status-Quo Assessment

On the basis of open street map (osm) data and various reference sources, I assessed the land consumption for five main types of OSAI in Berlin for all twelve districts.



I conducted my research with the open-source software QGIS. To verify the osm data, I worked with satellite pictures.



## Results Status-Quo Assessment

The map below shows the OSAI per type of infrastructure for one neighborhood in Berlin-Mitte.



## Conclusion and Future Works

The status-quo analysis shows that OSAI consumes (at least in the case of Berlin) a significant amount of land, of up to 8 sqm. per inhabitant.

To understand the potential of the traffic transformation towards sustainable mobility for the housing market, I am finalising my research with the four following work packages:

- Spatial Analysis
- Calculation of Space Consumption of OSAI in the Scenario of Traffic Transformation
- Recommendations of Political Action
- Best Practices of Transformation of OSAI

## Project Background:

This work is part of my PhD project, which I conduct within the interdisciplinary research group EXPERI. At the end, this work will show how many flats could be built potentially, if the traffic transformation were to be implemented.



HOSTED AND ORGANISED BY:



CO-ORGANISED BY:



IN COOPERATION WITH:



TOGETHER WITH:

