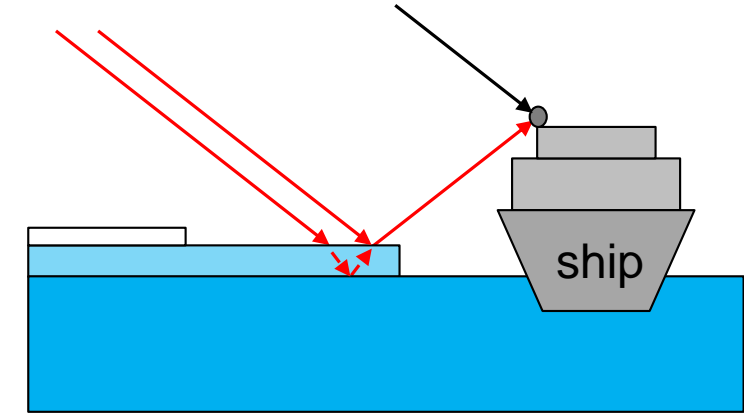
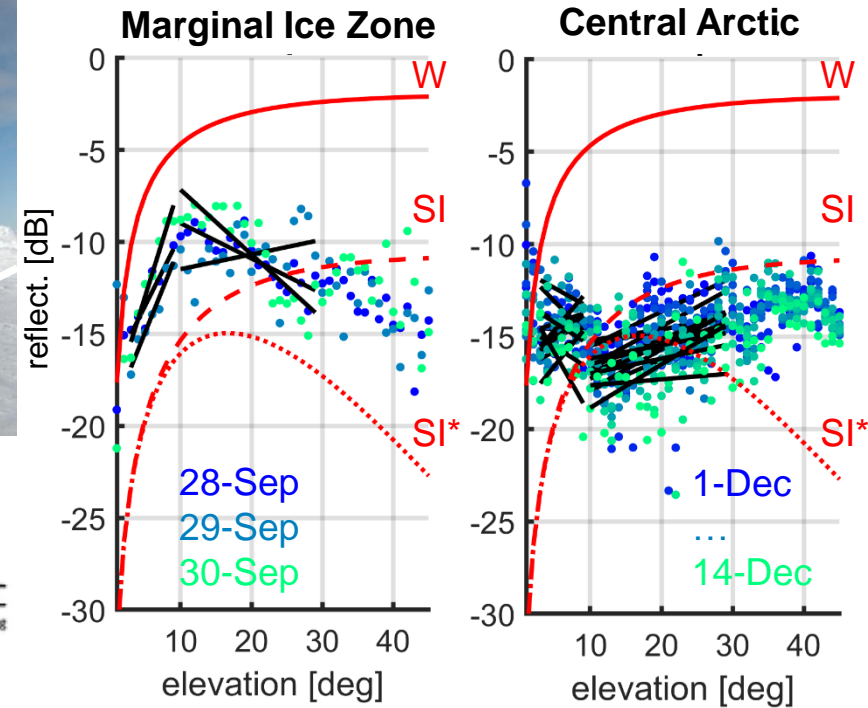
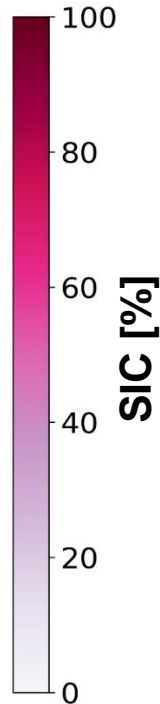
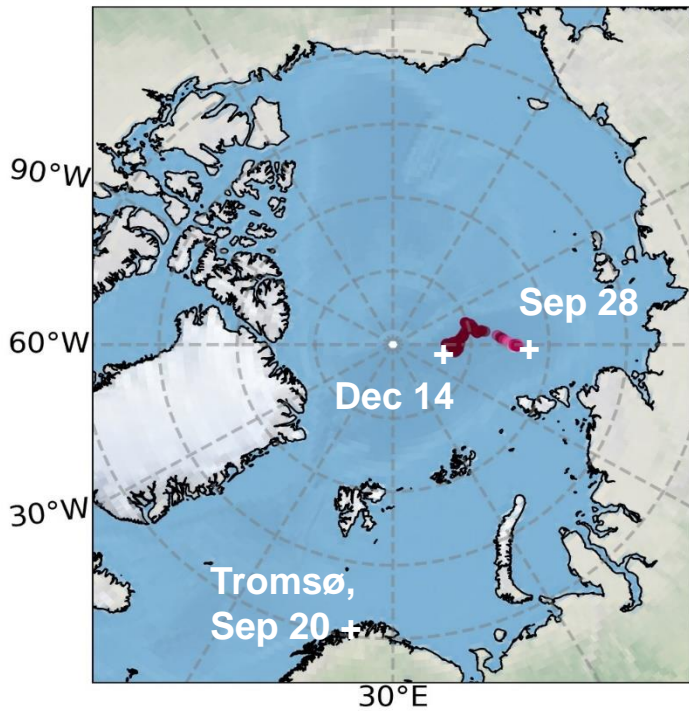


Sea-ice signatures in coherently reflected GNSS signals: Findings of the MOSAiC expedition

M. Semmling, J. Wickert, F. Kreß, M. M. Hoque, D. V. Divine, S. Gerland



MOSAIC first leg: Sep - Dec 2019



Semmling et al. 2019: Sea Ice concentration derived from GNSS reflection measurements in Fram Strait. doi: 10.1109/TGRS.2019.2933911.

W: Water ; SI: Sea Ice ; SI*: rough Sea Ice

