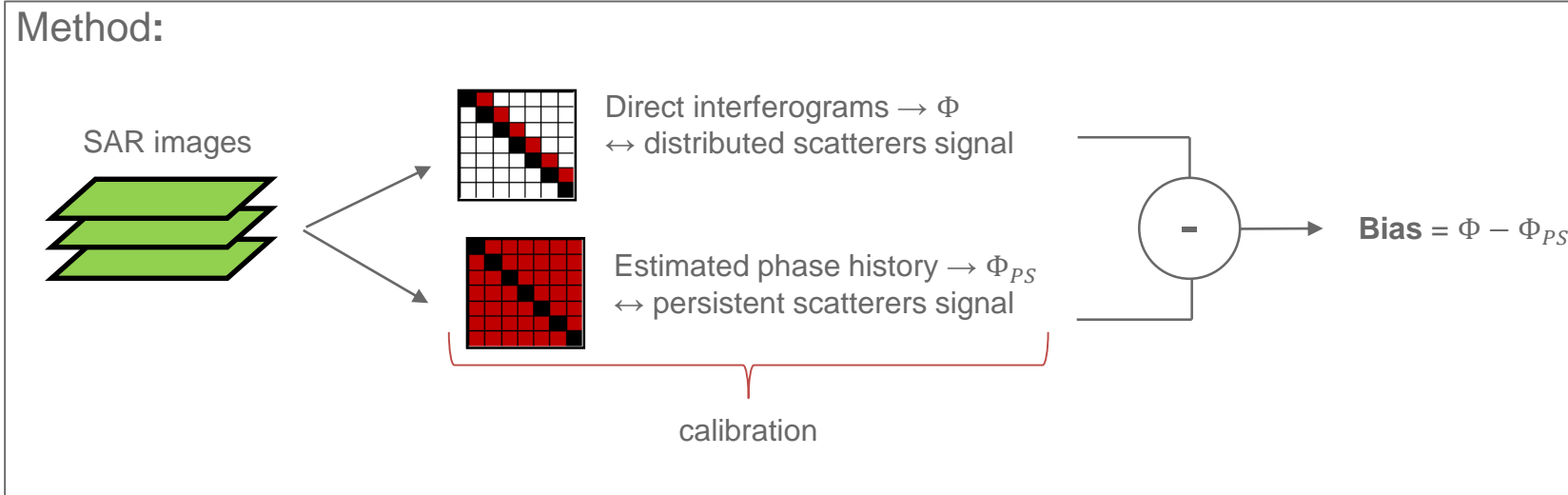
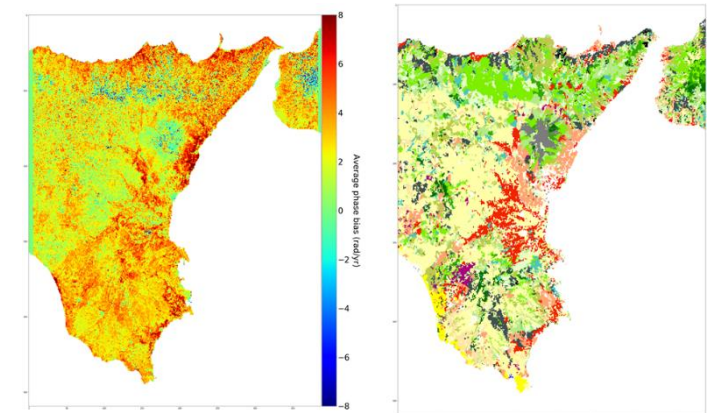


Paloma Saporta, Giorgio Gomba, Francesco De Zan (German Aerospace Center - DLR)



Data:

- 184 Sentinel-1 SAR acquisitions
- Region of interest: Eastern Sicily



Results:

- spatial analysis: average bias is not uniform and matches landcover features
- spatio-temporal analysis: separate bias into 2 contributions:
 - **Low frequency part:** varies seasonally, consistent inside landcover types
 → vegetation growth effect?
 - **High frequency part:** correlated with soil moisture variations

