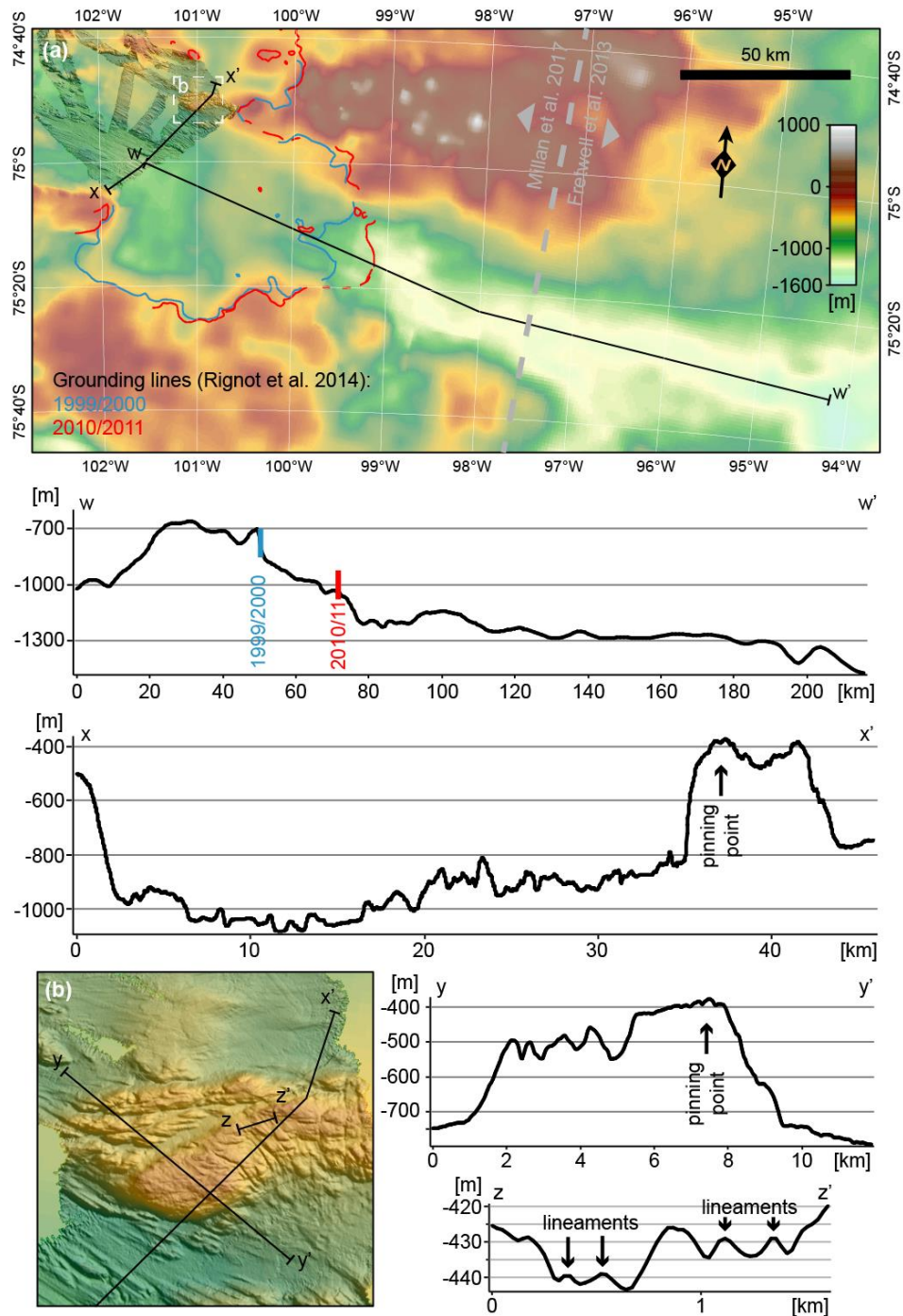


*Supplement of*

# **Bathymetric Controls on Calving Processes at Pine Island Glacier**

Jan Erik Arndt et al.

*Correspondence to:* Jan Erik Arndt (Jan.Erik.Arndt@awi.de)



**Figure S3: Cross-profiles of bathymetry and ice-bed topography in front and underneath Pine Island Glacier. Base data of map (a) and Profile W is from Millan et al. 2017 west of the grey dashed line and from Fretwell et al. 2013 east of the grey dashed line. Map (b) and profiles X, Y and Z are based on multibeam bathymetry from expedition PS104.**

## References

- Fretwell, P., Pritchard, H. D., Vaughan, D. G., Bamber, J. L., Barrand, N. E., Bell, R., Bianchi, C., Bingham, R. G., Blankenship, D. D., Casassa, G., Catania, G., Callens, D., Conway, H., Cook, A. J., Corr, H. F. J., Damaske, D., Damm, V., Ferraccioli, F., Forsberg, R., Fujita, S., Furukawa, T., Gogineni, P., Griggs, J. A., Hamilton, G., Hindmarsh, R. C. A.,  
5 Holmlund, P., Holt, J. W., Jacobel, R. W., Jenkins, A., Jokat, W., Jordan, T., King, E. C., Krabill, W., Riger-Kusk, M., Tinto, K., Langle, K. A., Leitchenkov, G., Luyendyk, B. P., Matsuoka, K., Nixdorf, U., Nogi, Y., Nost, O. A., Popov, S. V., Rignot, E., Rippin, D., Riviera, A., Ross, N., Siegert, M. J., Shibuya, K., Smith, A. M., Steinhage, D., Studinger, M., Sun, B., Thomas, R. H., Tabacco, I., Welch, B., Young, D. A., Xiangbin, C., and Zirizzotti, A.: Bedmap2: Improved ice bed, surface and thickness datasets for Antarctica, *The Cryosphere*, 7, 375-393, 10.5194/tc-7-375-2013, 2013.
- 10 Millan, R., Rignot, E., Bernier, V., Morlighem, M., and Dutrieux, P.: Bathymetry of the Amundsen Sea Embayment sector of West Antarctica from Operation IceBridge gravity and other data, *Geophysical Research Letters*, 10.1002/2016GL072071, 2017.